

**RURAL
CHURCHES
KINGS**

MONTAGUE Bible Chapel.
Sunday, Sept. 25. The Lord's
Supper 9.30 a.m. Sunday School
and Adult Bible Class 10.45 a.m.
Worship 7.30 p.m. Mr. Owen
MacRae, guest speaker. All wel-
come.

MONTAGUE Pastoral Charge,
the United Church, Sunday, Sept.
25. Lower Montague 9.45 a.m.
Montague 11 a.m. Valleyfield 8
p.m. Rev. Russell F. Burns, min-
ister.

DUNDAS — Annandale United
Baptist Pastorate. Dundas: Sun-
day School 10 a.m. Worship 11
a.m. Prayer meeting Thursday
at 8 p.m. Annandale: Sunday
School 10 a.m. Worship 8 p.m.
Lic. Myrtle Ingersol, pastor.

SOURIS — Bay Fortune United
Church Pastoral Charge. Sun-
day, Sept. 25. Souris: Sunday
School 9.30 a.m. Worship 11.00
a.m. Bay Fortune: Sunday
School 11 a.m. Worship 7.30
p.m. Rev. Frank E. Phinney,
minister.

MURRAY RIVER Church of
Christ Evangelistic Service 7.30
p.m. David Weale, speaker.

MURRAY HARBOR Church
of Christ Bible School 10 a.m.
The Lord's Supper and Worship
11 a.m. David Weale, minister.

GEORGETOWN Baptist
Church. Sunday, Sept. 25. Sun-
day School 10 a.m. Worship 11
a.m. Gospel Service 7 p.m.
Rev. Earle Smith, pastor.

GEORGETOWN Holy Trinity
Anglican Church, Sunday, Sept.
25. Holy Communion 10 a.m.
Rev. J. Stephen Sherren, Priest-
in-charge.

MONTAGUE Bible Capel.
The Lord's Supper 9.30 a.m.
Sunday School and Adult Bible
Class 10.45 a.m. Worship 7.30
p.m.

UPTON GOSPEL Chapel. Sun-
day School 10 a.m. Worship 11
a.m. Gospel Service 8 p.m.

MURRAY RIVER Pentecostal
Church, Sunday, Sept. 25. Sun-
day School 10 a.m. Worship 11
a.m. and 7.30 p.m. Rev. Fred
Day, minister.

MONTAGUE Pastoral Charge,
the United Baptist Church. Rev.
F. Donald Chase, pastor. Mont-
ague: Sunday School 10 a.m. Wor-
ship 11 a.m. Prayer and Bible
Study Wednesday 7.30 p.m. Mur-
ray River Sunday School 2 p.m.
Worship 3 p.m. BYF Monday
7.30 p.m. Sturgeon: Sunday
School 2 p.m. Worship and Com-
munion 7.30 p.m. Murray Har-
bor: Sunday School 2 p.m. BYF
Thursday 7.30 p.m.

MURRAY HARBOR Pastoral
Charge, the United Church.
Choir practice Thursday, Sept.
22 at 8 p.m. in Murray Harbor.
Young People's meeting Murray
Harbor Friday, Sept. 23. Sunday,
Sept. 25. Worship: Belle River
11 a.m. Little Sands 2 p.m. Mur-
ray Harbor 7.30 p.m.

MONTAGUE Church of Christ.
Sunday, Sept. 25. Bible School
10 a.m. Worship 11 a.m. Mes-
sage: "Christ Wants Youth." Ev-
ening 7.30 p.m. Message: "The
Holy City," with slides.

FREE CHURCH of Scotland.
Worship: Birch Hill 11 a.m. Sun-
day School 9.30 a.m. Bangor 2
p.m. Murray River, Sunday
School 2 p.m. Rev. Ewen
E. MacDougall, minister.

MONTAGUE Pastoral Charge,
the Presbyterian Church. Sun-
day, Sept. 25. St. Andrew's, Car-
digan: Church School 10.15 a.m.
Worship 11 a.m. St. Andrew's,
Lorne Valley: Worship 2.30 p.m.
Special budget offerings at both
services. St. Andrew's, Mont-
ague: Church School 10 a.m. Wor-
ship 7.30 p.m. Young People's
8.30 p.m. Rev. Basil Lowery,
B.A., B.D., minister.

CENTRAL KINGS Pastoral
Charge, the United Church. An-
nandale 9.45 a.m. Georgetown
11.15 a.m. Dundas 8 p.m. Rev.
J.W. Forbes, B.A., B.D., minis-
ter.

SONG SERVICE Murray Har-
bor United Baptist Church, Sun-
day, Sept. 25 at 7.30 p.m. Con-
ducted by W.J. Harris.

QUEENS

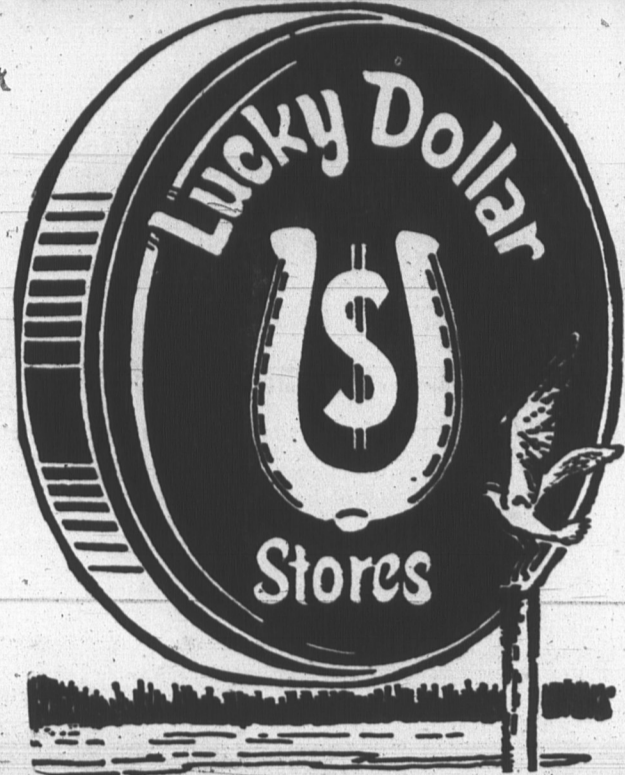
BROOKFIELD PASTORAL
Charge, the Presbyterian
Church. Hunter River: Worship
9.30 a.m. Sunday School 10.30
a.m. Glasgow Road: Worship 11 a.m.
Sunday School 10 a.m. Annual
WMS Thank-offering service
Brookfield 7.30 p.m. The Belfast
Quartet will be in attendance.
Sunday School 10.30 a.m. Harts-
ville: Sunday School 10.30 a.m.
Clair MacLeod, student minis-
ter. Rev. Basil Lowery, interim-
moderator.

THE PRESBYTERIAN
Church, Central Parish. Cane
Cove: Sunday School 10 a.m.
Worship and the receiving of
new communicants 11 a.m.
Clyde River: Sunday School 2.00
(Continued on page 9)

**YOUR RED CROSS IS
SERVING
TODAY**

READY FOR TOMORROW
Through your support of
The United Fund

**HARVEST
HOEDOWN**



SALE



FOR A HARVEST OF VALUES SHOP LUCKY DOLLAR STORES

FRESH BROILER

CHICKEN PER LB. 39^c

CHICKEN WINGS 3 LBS. FOR 1.00	CHICKEN BREASTS PER LB. 63 ^c	CHICKEN LEGS PER LB. 55 ^c	SWIFT'S PREM 12 OZ. TIN 55 ^c
---	---	--	---

CRINO MILK POWDER
3 LB. BOX 1.15

CROWN CORN SYRUP
2 LB. TIN 43^c

FRYS - CHOCOLATE CHIPS
2 6 OZ. PKG 49^c

NABISCO SHREDDED WHEAT
12 OZ. PKG 27^c

GENERAL FOODS DREAM WHIP
2 OZ. PKG 27^c

SUNSPUN SALAD DRESSING 16 OZ. BTL. 35^c

ALLENS DRINKS 3 48 OZ. TINS 1.00

NIFTY STRETCH TOP SEAMLESS NYLONS PAIR 39^c

BAYVIEW SLICED TUNA 7 OZ. TIN 37^c

PRINCESS CHOCOLATES 1 LB. BOX 79^c

Plan a Meal with
FROZEN FOODS

EAST PAU COD FILLETS LB. 35^c

YORK MEAT PIES EACH 27^c

PERFECTION ICE CREAM... 1/2 GAL. .89^c

VALUES EFFECTIVE UNTIL
CLOSING TIME,
SATURDAY, SEPT. 24

WHERE FRIENDLY PEOPLE SAVE YOU MORE...

JELLO PUDDINGS Regular Size 2 FOR 39 ^c	LIBBY'S CRINKLE CUT BEETS 20 OZ. TIN 13 ^c	HEINZ VINEGAR 160 Oz. 85 ^c	CHRISTIE'S PICNIC COOKIES PKG. OF 48 39 ^c
--	--	--	--

Quality PRODUCE

GOLDEN BANANAS
2 LBS. FOR 39^c

TOKAY GRAPES 2 LBS. FOR 49 ^c	P. E. ISLAND CARROTS 4 LB. POLY 35 ^c
---	---

SCHWARTZ BLACK PEPPER 4 OZ. PKG 35 ^c	SCHWARTZ PEANUT BUTTER 16 OZ. REG JAR 43 ^c
HEINZ SWEET MIX PICKLES 52 OZ. JAR 59 ^c	DUNCAN HINES CAKE MIX 2 PKG. FOR 89 ^c
AERO LIQUID WAX 16 OZ. 49 ^c	PROCTER & GAMBLE NEW BOLD REG. SIZE 49 ^c
KING BEACH PEACHES 3 20 OZ. TINS \$1.00	SIFTO FINE SALT 2 2 LB. PKG. 31 ^c
LARGE SIZE BRYLCREEM . . 65 ^c	

