

IT HAS OFTEN been said that dairying is the backbone of Island Agriculture and many will agree that the milk and cream of one of the Island's bountiful pasture lands. (National Film Board).

Mingling Of Two Strains Produced Holstein Breed

Holland, romantic land of windmills, dykes and wooden shoes, is the home of the Holstein-Friesian cow. Legend records that two tribes from Central Europe, settling in Holland at the dawn of History, each brought their cattle with them, the one strain being white and the other black. The "Black and White" cow is the result of the mingling of the two strains. Centuries of careful selection and management were required to develop the highly-specialized dairy cow of today. In fact, at the time when the legions of Julius Caesar swept across Europe, Holland was already noted for its Black and white cows.

ATTACHED TO HOUSES

Probably the reason that the Dutch farmer has been so very successful in developing this breed of cattle is that conditions in Holland are ideal, the rich soil and heavy rainfall combining to produce luxuriant pasture. Incidentally, fences are seldom used in Holland, the fields being separated by water filled ditches. Windmills are used to pump the water from the ditches into canals which run at higher levels, since much of the country lies below the sea, which is kept at bay only by an elaborate system of dykes. The stables in Holland are kept spotlessly clean and they are as a rule attached to the house with only a door separating them from the kitchen.

Holstein - Friesian cattle are usually called "Holsteins" in North America. Elsewhere in the world they are known as "Friesians". Only black and white cattle are eligible for registration as purebreds according to the rules of the Holstein-Friesian Association of Canada. In addition each animal must have registered parents and have a white switch on the end of the tail and white on all four legs near the hoofs.

THEY'RE BIG "UNS"

In size they are the largest of the dairy breeds. A mature cow should weigh from 1,400 to 1,500 pounds and a mature male from 1,800 to 2,000 pounds. The calves weigh from 75 to 100 pounds at birth and are hardy and easy to raise. The heifers begin to produce milk when two or two-and-a-half years of age.

The disposition of this breed is docile and gentle and they are, therefore, easy to handle. They are especially noted for being producers of large quantities of milk containing an average amount of butterfat, that is easily digested by human beings. They also make good beef.

There are certain standards of body conformation or type desired in the Holstein - Friesian breed, some of the more important being: angular shape, straight top line, bright eyes, slim neck, alert hearing thin skin, silky hair, broad hips, deep body, well formed udder and large milk veins.

LARGE ORGANIZATION

The first importation of any consequence of Holstein-Friesian cattle into America took place in 1861 but it was not until 1881 that they were introduced into Canada. In 1884, a half dozen enthusiasts held a meeting at the Toronto Industrial Exhibition (forerunner of the CNE) and organized the Holstein-Friesian Association of Canada. In the sixty-odd years since then the Holstein cow has advanced in popularity to the point where she now outnumbers all other dairy breeds combined. The Association has over 12,000 members, which makes it the largest purebred livestock organization in the British Empire and in 1951, a total of 61,799 animals were registered. The head office is at Bradford, Ont.

PROFITABLE COW

The reason for the overwhelming popularity of the Holstein cow with dairy farmers is not hard to find for as Dr. E. S. Archibald, director of Experimental Farms for the Dominion Department of Agriculture has declared—"She is the most profitable dairy cow." Bearing out this statement is the fact that, in addition to holding all the records for milk, Holsteins hold 39 out of 42 championships for butterfat production in the various classes of the Record of Performance. This is a system of keeping production records, operated by the Dominion Department of Agriculture and available to all owners of purebred cattle. The and records it on a special milk sheet and as a check, an inspector from the Department super-dairyman weighs each milking vessel, the milking and weighs the milk at regular intervals.

Many Holstein cows have produced 40 quarts of milk in a day and many have given 10,000 quarts in a year. The largest production of milk for one day ever recorded in Canada was 160 quarts (approximately 64 quarts) made by the Holstein Ormico Reta Roberts. The Canadian record for yearly milk production of 35,314 pounds was established by another Holstein, Re-Echo May Burke. Susie Korndyke Fayne Lass, the Canadian Champion for lifetime production, has given 230,179 pounds of milk. It is estimated that if it were possible to pour this amount of milk into quart bottles and then place them

Clear Away Weeds, Brush, And Dry Grass After Snow

As soon as the snow goes or possibly even before, it is a good thing for the gardener to get all old weeds, brush and dry grass cleared away. While some of this may rot down into humus, if handled properly, the dryer stuff takes a lot of time to disintegrate and usually it contains a lot of weed seeds that are best destroyed.

Where at all possible burning should be done where the ashes can be worked into the soil. These ashes contain a little potash which is one of the essential fertilizer materials. A good supply of the same can be obtained when the ashes from the fireplace, especially where hardwood is burned, are spread over the soil. Coal ashes, on the other

Can Avoid Loss Of Iron In Salt Block

Loss of iodine in salt blocks exposed to the weather can be avoided when potassium iodate is used as a source of iodine. This was demonstrated in 1951 by Dr. Watson and Mr. Davidson, chemists with the Canada Department of Agriculture, and their recommendations have now been given official sanction under the Food and Drug relations.

Iodine is required by livestock, as it is by humans, to prevent goitre and other ill attendant on diseases of the thyroid gland. When pigs, calves or foals are born dead, or weak and hairless, iodine deficiency in the maternal diet is immediately suspected. For this reason iodine as potassium iodine is included in the salt. This is quite satisfactory for table salt which is kept dry, but not for livestock as an iodized salt block exposed to the weather or left in a manger will lose its iodine fairly rapidly.

N. D. MacLEAN HAS SERVED PRINCE EDWARD ISLAND for over 35 years . . .

One of the most exacting services today is a funeral service, to worthily mark the passing of a beloved one. A funeral should express, as eloquently as possible, the heartening promise of the life eternal . . . comfort and sustain us through the darkest hours. N. D. MacLean's years of experience assure you of a dignified and appropriate memorial service for your loved one. We offer you friendly, sympathetic help with attention to the details that mean so much. Our final services are conducted in dignity and reverence befitting such a solemn occasion. We strive to give the finest—no matter how much or how little you may spend. In your time of sorrow, call on us—we are always ready to serve you.

N. D. MacLEAN FUNERAL DIRECTORS

Charlottetown Prince Edward Island

Animal Weight Is Partly Heritable

A practical definition of heritability may best be given by considering the causes of differences between two animals for any particular trait. Let us take as an example the trait of weight for age in swine. Differences in this trait may be caused by environment (feeding, management disease, etc.) or by inherent differences arising from their difference in parentage.

The fraction due to the latter source, since it is caused by genetic differences, is termed the heritability of that trait. Results of many studies indicate that variation in weight at a given age is about 25 percent heritable, the remaining 75 percent being due to difference in environmental factors. This means if we have a population of pigs whose average weight at 200 days of age is 180 pounds, and we reserve for breeding only these gilts and boars that average 200 pounds in weight at this age, then all the progeny of these selected pigs should average 185 pounds at 200 days of age.

It must be kept in mind that these figures are those expected for a large population and cannot be expected to hold true for every breeder who practises such

selection. The very fact that heritability is not perfect means that environmental factors, such as litter size, birth weight, or health, contribute something to the differences in growth rate that are found between pigs within a herd.

Naturally this will cause some errors to be made in selection. Some of the pigs discarded will have a high inherent growth rate but will have been subjected to unfavourable environment. Other pigs with a lesser genetic growth potential might receive the breaks in environment and as a result grow sufficiently well that they will be reserved for breeding.

Because of this element of chance some breeders will make greater progress than others. This, however, does not invalidate the predictions made, nor should breeders become alarmed or discouraged if their selection programme fails at first to yield the improvement suggested. All these figures are intended to convey is that, if all breeders consistently practised this intensity of selection for growth rate, the overall average for the swine population in Canada would be expected to improve by 5 pounds in each generation.

Sanitation Is Stressed For Joint Ill Control

Navel ill or joint ill is an infectious disease of new-born foals that is fatal in about 50 percent or more of the cases. A large proportion of the foals that survive are left with joint pains.

The disease is common in all areas where horses are raised and the germs causing the infection are widely distributed. Generally the germs gain entrance through the navel cord at the time of birth. There is also a possibility that mares may infect the foal prior to birth.

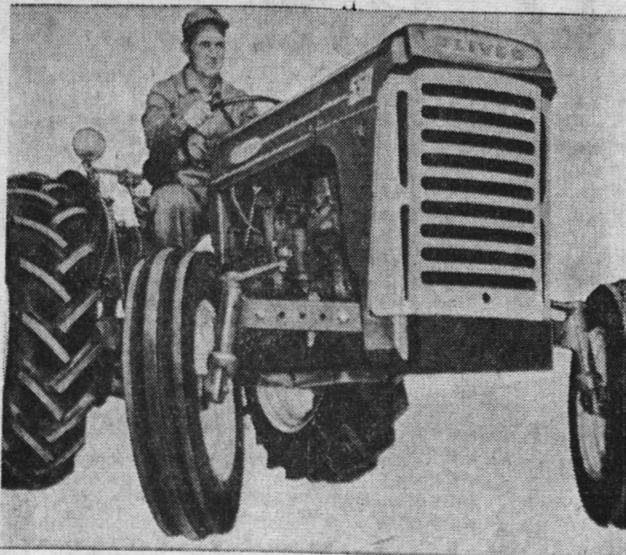
Prevention is the most satisfactory procedure. Strict barn sanitation is of extreme importance, especially on premises where there has been a history of a previous infection. The mare should be placed in a clean pen prior to foaling. Immediately after foaling the navel cord should be disinfected with about 5 percent tincture of iodine or some other suitable disinfectant. The cord should be treated twice each day until it dries up and drops off. Treatment of the infected foal is not always satisfactory, but, if attended to when symptoms are first observed, the chances of recovery are greatly increased.

The symptoms usually appear within 24 to 48 hours after infection has occurred. The sick foal refuses to suck and has a high temperature. Sometimes death follows before other symptoms are noticed. However, the course of the disease is usually prolonged. The animal is reluctant to move, joints become swollen, hot and painful. In later stages the swollen joints may break and discharge pus.

Prevention is the most satisfactory procedure. Strict barn sanitation is of extreme importance, especially on premises where there has been a history of a previous infection.

The mare should be placed in a clean pen prior to foaling. Immediately after foaling the navel cord should be disinfected with about 5 percent tincture of iodine or some other suitable disinfectant. The cord should be treated twice each day until it dries up and drops off. Treatment of the infected foal is not always satisfactory, but, if attended to when symptoms are first observed, the chances of recovery are greatly increased.

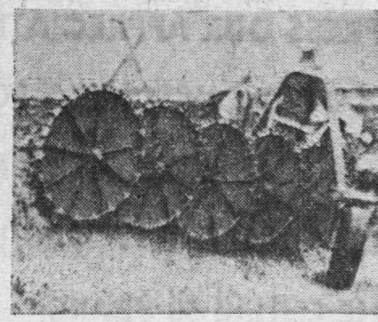
Mr. Farmer - - - See The NEW OLIVER 2 - 3 PLOW 550 TRACTOR BEFORE YOU BUY



FEATURING . . .

- Powerjuster Rear Wheels
- Automatic Draft Control
- Full Time Power Steering (optional extra)
- New Safety-Switch Starting

You get a new mastery over farm work when you take the controls of this new Oliver. Right at your finger tips is eager, flexible power to apply at drawbar, hydraulic system or PTO—quickly, smoothly.



we are

Dealers

for

the new

Pollard

Row Raker

Now

On Display

WE ALSO HAVE IN STOCK AND ARE AUTHORIZED DEALERS FOR THE FOLLOWING: Cunningham Hay Conditioners, Cross Elevators, Pollard Row Raker, and a complete line of Firestone Tires, Refrigerators, and other appliances.

FRED F. KITSON

North River Dial 5956

Straw Waste Far Too Great In Ontario

Some 50,000,000 tons of straw go to waste in Canada every year. It is abandoned on the ground or in stacks, or burned. This is a tremendous amount of straw and the Canadian Chamber of Commerce believes Canadians ought to do something about it.

With that idea in mind, the Chamber is distributing a booklet entitled "The Utilization of Straw in Canada," written by E. S. Archibald, Dominion Department of Agriculture, assisted by three men from the prairie research laboratory.

Return to the soil to starve and other crop residues to restore fertility and help prevent soil erosion is advocated by Dr. Archibald. Tests in Western Canada had shown that crop residue, including straw from a 10-bushel acre crop of wheat, would return to the soil about 900 pounds of organic matter an acre. There was no need however, to put back all of it, as straw could serve as part of the winter feed for livestock.

"It is extremely doubtful that any industrial use can be found for straw which would make it sufficiently profitable on the majority of eastern farms to compensate for the loss of straw if such loss had to be replaced by the use of chemical fertilizers," Dr. Archibald comments.

Technicians in the prairie regional laboratory at Saskatoon were looking into the various uses of straw such as the production of corrugating, container, structural boards and briquettes for fuel.

Although fine paper-making was not an immediate object of research, it was noted that "cereal straws will give a sheet of white writing paper which to the naked eye and to the touch is indistinguishable from a high quality bond made from wood pulp."

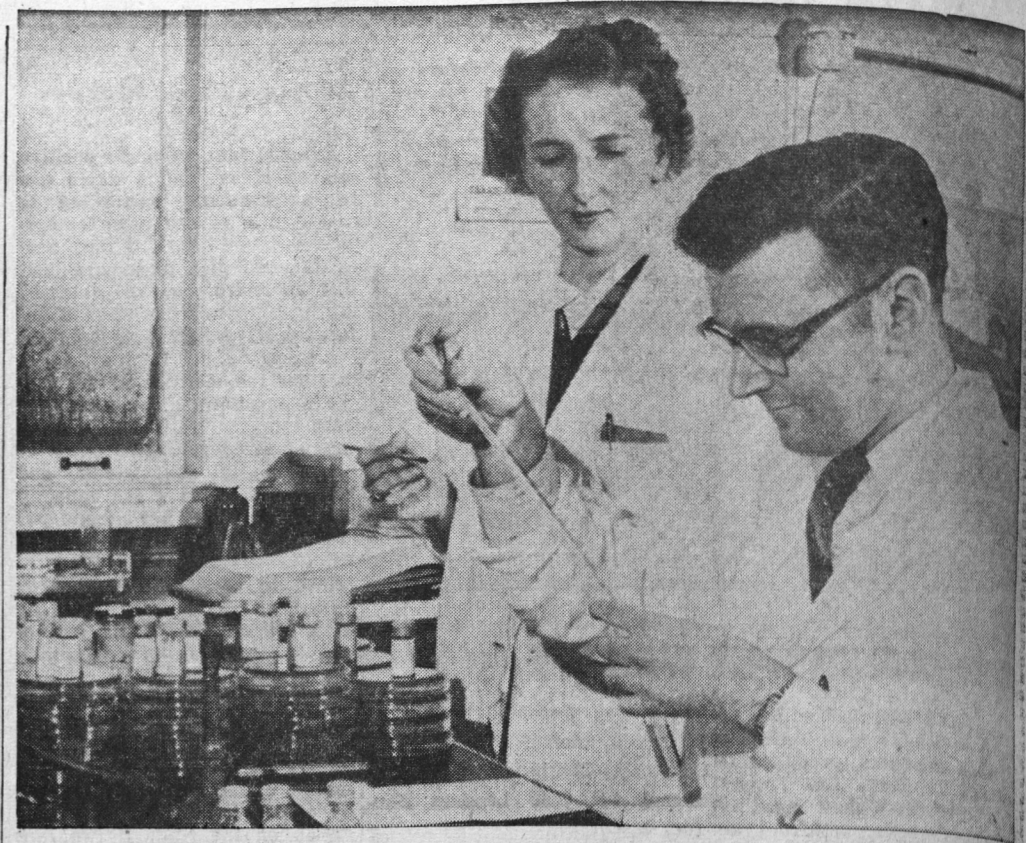
Straw as a possible source of chemicals also was being examined.

CABBAGE HEAD SPLITS

When the cabbage heads are well developed they may split or burst if rain or a heavy irriga-

BEST VALUES IN FARM FOOTWEAR AT

Howard McInnis
175 QUEEN ST.



BILL MacDONALD and Mrs. Shirely Wood conduct tests to determine the cause of cattle diseases. The Laboratory service plays an important part in the

work of the veterinary work carried out by the Provincial Department of Agriculture. These behind the scenes scientists un-

cover valuable information which in turn assists the veterinarian in his diagnosis of certain animal ills.

partly overcome by checking results from rapid new growth due to the increased moisture. Tendency to splitting can be

partly overcome by checking growth, either by deep cultivation or by twisting or raising the plants. Also, a spade may be

pushed down on one side of the plant, and the soil heaved slightly to partly break the root system.



For Life Insurance and Annuities Consult J. LeRoy Gallant, P.E.I. District Manager, North American Life Assurance Co.



For Fire — Auto — Casualty Etc. and our Easy Payment Budget Plan Consult Douglas Mitchell.

A LEGEND

One night, in ancient times three horsemen were riding across a desert. As they crossed the dry bed of a river, out of the darkness a voice called, "Halt!" they obeyed. The voice then told them to dismount, pick up a handful of pebbles, put the pebbles in their pockets, and remount. The voice then said, you have done as I commanded. Tomorrow at sun-up you will both be glad and sorry. Mystified, the horsemen rode on, when the sun rose they reached into their pockets and found that a miracle had happened. The pebbles had been transformed into diamonds, rubies and other precious stones.

They remembered the warning, they were both glad and sorry — Glad they had taken some, sorry they had not taken more. And this is the story of insurance.

J. LeROY GALLANT-Insurance
2 Granville Street, Summerville Phone 3520, Res. 2877

FIRESTONE TRACTOR TIRES

LOOK HOW FIRESTONE CAN SAVE YOU MONEY

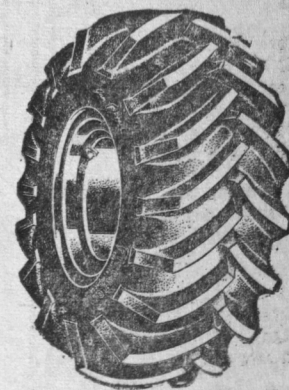
WE WILL GIVE YOU TOP TRADE ALLOWANCES

COMPARE PRICE COMPARE QUALITY and you'll choose powerful FIRESTONE TRACTOR TIRES. New powerized tractor bars, bigger and stronger shoulders, buttressed power links, greater tread width, flared openings and dual shock protectors assure you of longer, more capable tire life. You get greater bite, better cleaning, less bar wiggling and reduced tire wear when you choose FIRESTONE. NO OTHER TRACTOR TIRES GIVE SO MUCH FOR SO LOW A PRICE.

NEW FIRESTONE DEEP TREAD GROUND GRIP OPEN CENTER TRACTOR TIRE

9-24 4 Ply Ground Grip Open Centre Tractor Tire

Only **52.30** TOP TRADE FOR YOUR OLD TIRES



ROBINSON SUPPLIES LTD.

187 Queen Street

Phone 6314