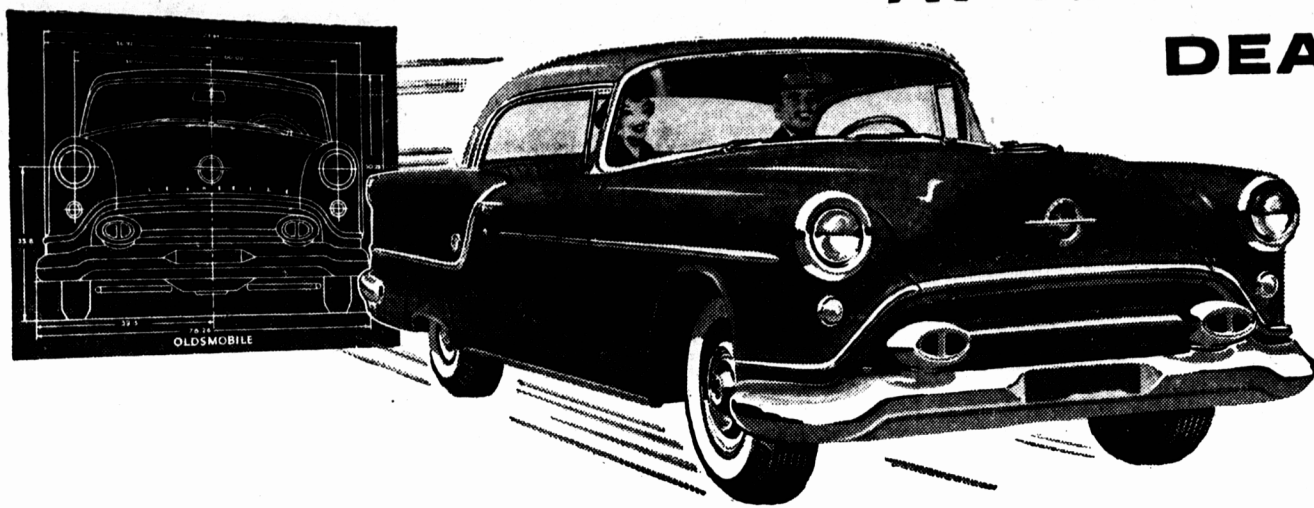


ON DISPLAY TODAY

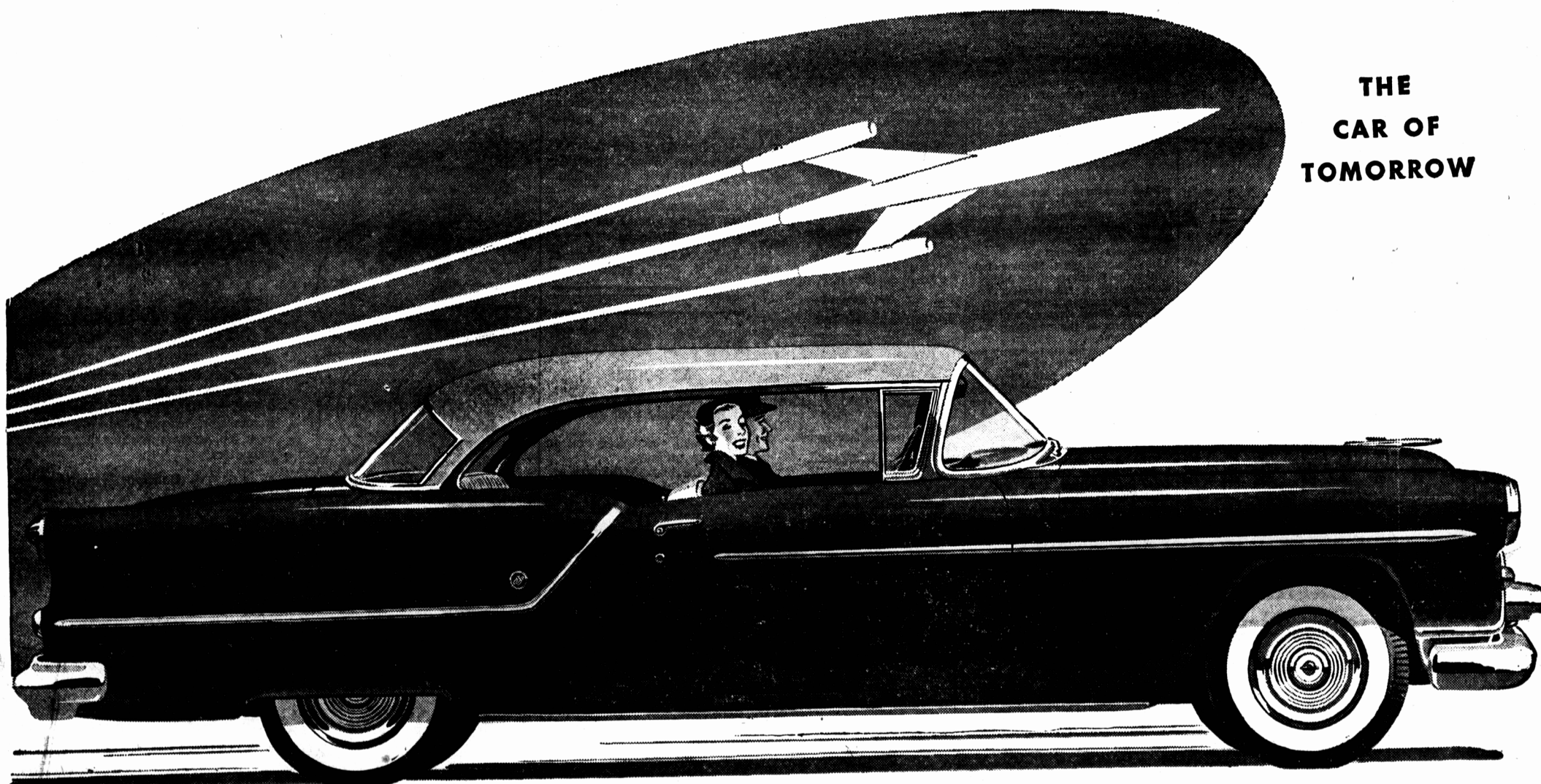
AT YOUR OLDSMOBILE DEALER'S



The newest new Oldsmobile in fifty-seven years!

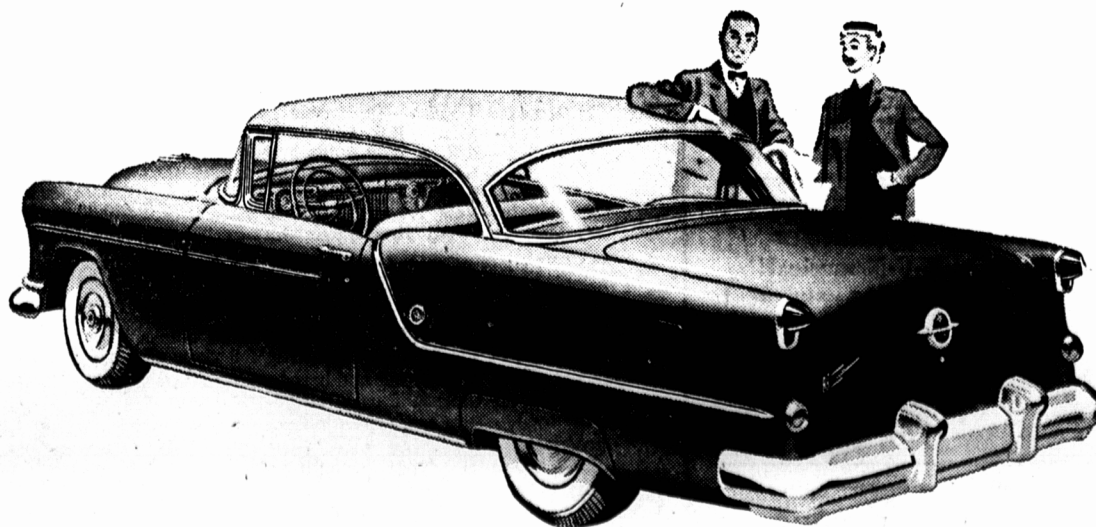
OLDSMOBILE

THE
CAR OF
TOMORROW



Car illustrated: 1954 Super "88" Holiday Coupé. A General Motors Value.

ANNOUNCING the breath-taking new Oldsmobile Super "88" for 1954! The Oldsmobile so ultra-new in design . . . so original in style throughout . . . *there's never been a car like it before!* Just wait till you see its new lower, longer, lovelier silhouette! The daring new slant of its panoramic windshield! The dramatic new flair in its sweep-cut doors and fenders! And just wait till you drive the new 185-horsepower World's Record "Rocket" Engine with 8.25 to 1 compression ratio — the engine that outperforms, and out-economizes even the power-famous '53 "Rocket". For a new view on modern automobiles — see the new Super "88". And watch for Oldsmobile's new "Dream Car" — the Classic Ninety-Eight . . . coming to your dealer's soon!



SEE YOUR NEAREST OLDSMOBILE DEALER

HORNE MOTORS LTD

203 FITZROY STREET

CHARLOTTETOWN

DIAL 8525

O-64