

Village Rebuilding Underway In Wake Of Italian Landslide

LONGARONE, Italy (AP)—Early in October a wall of water slammed down upon this northern Italian town and almost erased it from the map, along with a half-dozen nearby villages.

One side of towering Mount Te collapsed into the huge reservoir behind the 873-foot Vaiont Dam. Millions of cubic yards of rock and dirt filled a third of the man-made lake and sent a 130-foot wave over the dam crashing down on the sleeping village below. Nearly 3,000 persons perished. Railway cars and buildings with thick stone walls were swept away.

Bulldozers and giant cranes have started rebuilding Longa-

rone. The first prefabricated homes have been put up at neighboring Codissago.

The few hundred survivors of the 1,600 residents of Longarone and neighboring villages are helping rebuild. But even their dogged determination leaves unanswered the question:

Who will live in 500 new residences?

One civic official of the few who survived comments bitterly: "The dead need no homes."

Or will the homeless from other towns partly destroyed in the disaster, or evacuated because of millipede danger, risk coming here to start anew?

DAM STILL STANDS

The dam still stands. The collapsed mountainside fills the reservoir from side to side. Behind that, the flow of rivers swollen by rain is raising the water level of a backed-up lake eight inches a day.

Officials see no danger, but survivors walk in fear, conquered only by attachment to try and.

Here lived a people closely bound to their homes. Hundreds of residents had emigrated to other countries. Many, after put-

ting aside savings, came back to their home town to die. Most died here the night of Oct. 9.

Bodies still are being found. Recently two young men and two girls were found dead in the sands of the Piave River. They had been eating at the Longarone Hotel when the flood struck. One still had a knife and fork clutched in his hands.

In all, more than 1,500 bodies have been recovered. Soldiers and firemen expect to find 100 to 200 more. Hundreds never will be recovered. Some were washed as far as the river mouth on the Adriatic, almost 100 miles away.

RETURN TO SCHOOL

In a makeshift schoolroom in Longarone town hall, one of the few buildings left standing on a slope above the rest of the town, 40 children have gone back to studies. They lost 180 schoolmates, along with 12 of 14 teachers and the town's parish priest.

It has poured in from government and from organizations and individuals all over the world. Some survivors get more money now than the incomes they had before the disaster.

The Italian government is

World Fair's Master Plan Emphasizes Lakes, Canals

By STRIAN MATHESON MONTREAL (CP)—The master plan for the 1967 world's fair at Montreal emphasizes water—lakes, lagoons and canals within islands surrounded by the St. Lawrence River and connected to Montreal by bridges.

The Canadian World Exhibition Corporation unveiled the plan Monday and emphasized it must still receive approval by the federal and Quebec governments. The plan is to serve only as a basis for future designs.

Answers were given at a press conference to questions raised about the City of Montreal's ability to deliver the fair site to the corporation by June 30, 1964, as required by the International Bureau of Exhibitions.

"The city has admitted difficulty in obtaining fill from the bottom of the St. Lawrence River to fill in what originally was to be a 210-acre island joined to the shore opposite Montreal and providing parking space."

This has been modified to include 60 acres of pavilion area and many water areas within the originally-planned framework of Ile Notre Dame.

CREDITS ARCHITECTS

Robert Shaw, deputy-commissioner general of the corporation, told the press conference the greatly increased use of water in the fair site is the result of an architectural decision made after the fill problem arose.

He gave a schedule for fair site development and construction which would allow the city to continue filling in the area for more than a year past the deadline.

"The site will be completed, in my opinion, not on June 30," he said. "However, the city has assured me that those sections we require will be ready in time for our construction program."

The schedule, he said, calls

for installation of underground services and foundations for the principal roads over a year period starting in the summer of 1964.

Under this plan, construction of buildings would take place in 1965 and 1966, leaving a six- to eight-month period for the installation of exhibits, landscaping and training of exhibit staff.

SUBMITTED FRIDAY

The master plan was submitted to the federal and Quebec governments last Friday, the deadline under legislation setting up the corporation. Mr. Shaw said he hopes the plan would receive approval by both governments early in January.

He said Commissioner-General Pierre Dupuis is scheduled to start a sales trip to the United States, Mexico, Britain,

France and member countries of the International Bureau of Exhibitions. Mr. Shaw will see provincial and industrial participation in a trans-Canada tour later in the month.

The key entrance area to the fair site will be in southwest Montreal at Point St. Charles. It is intended to serve the majority of visitors who arrive at the world's fair by automobile from projected and existing highways. A 125-acre parking lot is also indicated for the area.

The 148-acre site will include, Mr. Shaw said, a stadium, arena and convention facilities.

Discussions had been held with Montreal Canadians of the National Hockey League about to start a sales trip to the United States, Mexico, Britain,

for installation of underground services and foundations for the principal roads over a year period starting in the summer of 1964.

Under this plan, construction of buildings would take place in 1965 and 1966, leaving a six- to eight-month period for the installation of exhibits, landscaping and training of exhibit staff.

SUBMITTED FRIDAY

The master plan was submitted to the federal and Quebec governments last Friday, the deadline under legislation setting up the corporation. Mr. Shaw said he hopes the plan would receive approval by both governments early in January.

He said Commissioner-General Pierre Dupuis is scheduled to start a sales trip to the United States, Mexico, Britain,

France and member countries of the International Bureau of Exhibitions. Mr. Shaw will see provincial and industrial participation in a trans-Canada tour later in the month.

The key entrance area to the fair site will be in southwest Montreal at Point St. Charles. It is intended to serve the majority of visitors who arrive at the world's fair by automobile from projected and existing highways. A 125-acre parking lot is also indicated for the area.

The 148-acre site will include, Mr. Shaw said, a stadium, arena and convention facilities.

Discussions had been held with Montreal Canadians of the National Hockey League about to start a sales trip to the United States, Mexico, Britain,

had also been held with Montreal Associates of the Eastern Football Conference in connection with the stadium and with the CNR about the convention area.

WARM ART

LONDON (AP)—For 35 cents, chilled Londoners can warm up as well as view great art in hot-house temperatures. England's greatest Goya exhibition, worth \$10,000,000, is on view at Burlington House at special temperatures to protect the paintings.

ABERDEEN, Miss. (AP)—An explosion in the air flipped through a Strategic Air Command B-52 jet bomber Monday, killing its crew of six.

The plane exploded shortly after take-off from Columbus Air Force Base.

SAC bombers sometimes carry nuclear weapons, but the trigger mechanism is not tatched.



Singing our greeting loud and clear—may yours be a glorious Christmas!

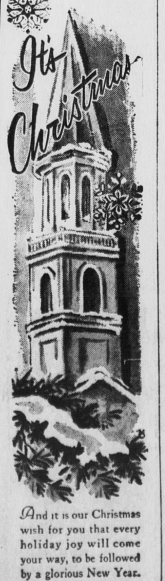
MALLET'S Radiator Service
Charlotte town



GREETINGS

To our many customers and friends—wish you a Merry Christmas and a Happy New Year.

JENKINS Transfer Ltd.
101 Longworth Ave.



And it is our Christmas wish for you that every holiday joy will come your way, to be followed by a glorious New Year.

SEAMAN BEVERAGE LTD.
Water St. Ch'town

cheerio
BEST OF THE SEASON TO YOU AND YOURS!

TAIT FLORISTS
Ambrose Street Charlotte town

BEST CHRISTMAS WISHES

ALFRED BERNARD
Texaco Station Summerside
Greenwood Drive

Peace and Joy

WE PRAY THAT THE BEAUTY OF THE YULETIDE SPIRIT GLADDENS EVERY HEART

CLARK TIRE and SUPPLY LTD.
Kent Street Charlotte town

Happy Holiday!

GIFTARAMA
Charlotte town's Newest Gift Centre

Christmas Greetings

It's fine folk like you who make Christmas a pleasure... and it's always so nice to wish you joys without measure! Best Holiday Wishes from our entire staff.

TANTON ACCESSORIES LTD.
Great George St. Charlotte town

Santa's Dream—and it's our cue to wish each of you a very Merry Christmas from all of us.

WALTER CARVER JR.
PETROLEUM PRODUCTS
St. Peters Rd.

Seasons Greetings

Hope you'll be right at home with happiness on Christmas Day! We extend our best wishes and grateful thanks to our many kind patrons.

PRINCE BEAUTY SALON
142 1/2 Great George St. Charlotte town

Joyous Noel

This Christmas, we sincerely wish for you all the joys and blessings of the season. May abiding peace and happiness be yours.

ATLANTIC ROOFING and INSULATION CO.
18 Spring Park Road

GLORY TO GOD IN THE HIGHEST, and on earth peace, good will toward men.
LUKE 2:14

May the true message of Christmas fill your heart with greatest joy.

Management and Staff

CANADIAN TIRE ASSOCIATE STORE
STEWART & MacRAE
96 Queen St. Dial 4-8569

With all Good Wishes for Christmas

The scene is set for gladness and cheer... so we send our brightest wishes with a happy "Thank you" for allowing us to serve you.

Management and Staff
Wm. Condon & Sons
Queen Street Charlotte town

Joyous Greetings To all our friends

From the bottom of our hearts, we wish our friends and patrons all the joys of a wonderful holiday season. May every star you reach for be yours... may every hope you have be fulfilled... and may you ever be rich in love and companionship.

Management and Staff

STEWART MOTORS LTD.
Your Ford-Mercury Dealer
224 Great George St. Charlotte town