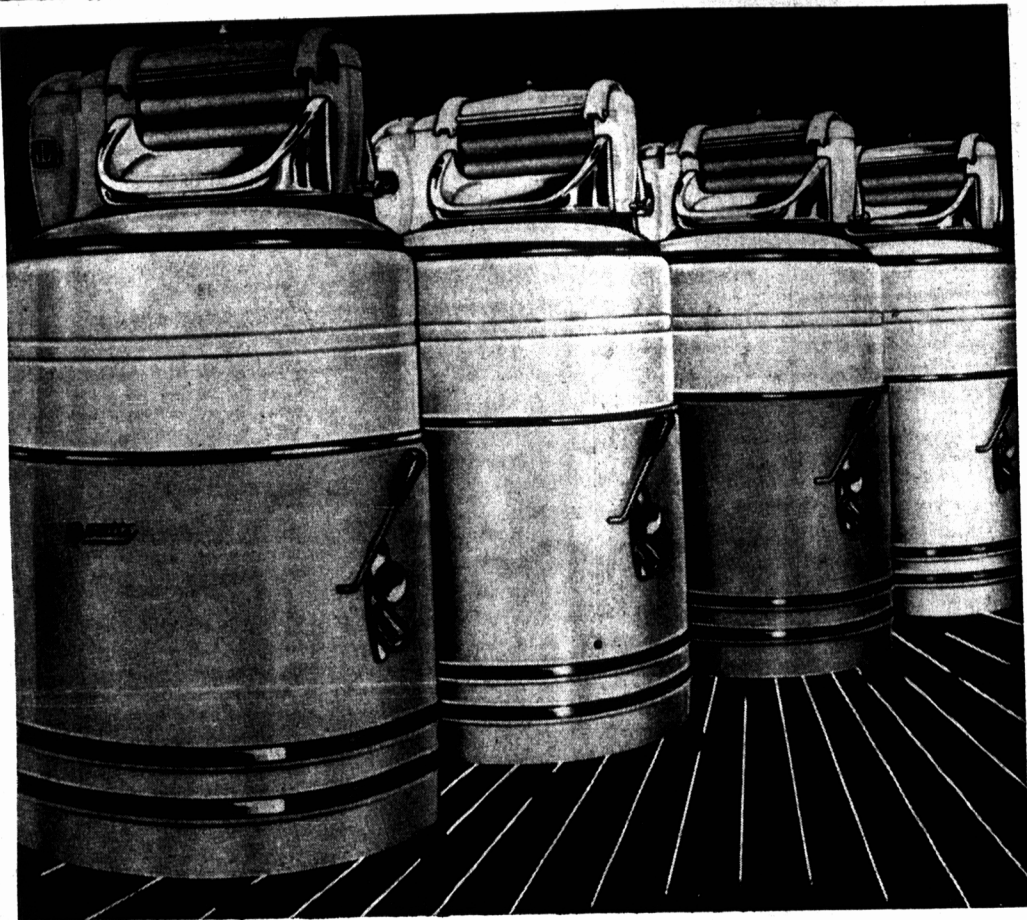




# 60<sup>00</sup> - TRADE-IN ALLOWANCE



## For Your Old Washer . . . Regardless of Condition On The Purchase Of A New "BEATTY" CROMATIC WASHER

Because of Popular Demand And With The Co-operation Of The Manufacturer We Are Again Repeating This Tremendous Offer.

**For ONE WEEK ONLY**  
April 30th to May 5th Inc.

Without Pump . . . Regular 229.95  
Less 60.00  
TRADE-IN ALLOWANCE **169.95**

With Pump . . . Regular 239.95  
Less 60.00  
TRADE-IN ALLOWANCE **179.95**

The First and Only Washer With  
Double - Wall Stainless Steel Tub!

Trade In your old Washer on the 1956 Style Leader! . . . The fabulous Beatty "Cromatic" . . . the only Washer with double wall, stainless steel tub. Available in snowy white or two-toned pastel shades that will bring lively color to your kitchen or laundry, as well as, give you the finest in washing efficiency. Powered by the Beatty "Econamizer" mechanism and fitted with the Beatty "Giant Press" Wringer. Take advantage of this great Trade-In offer NOW . . . Get a beautiful Beatty "Cromatic" Washer.

Order Early . . . Be Assured Of Yours!

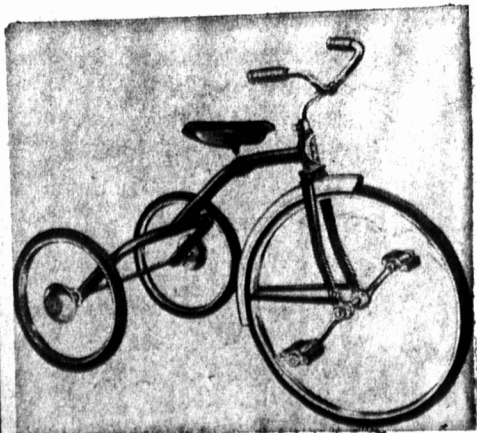
--- HOLMAN'S Both Stores APPLIANCES ---

### NO DOWN PAYMENT

Convenient Monthly Installments

## Springtime and Time for "PLAYTIME PALS"

### Fun, Health and Happiness For Your Girl or Boy!



Well Known Makes  
**TRICYCLES**

Well made of sturdy tubular steel finished in baked enamel with chrome trim. There's a size for every child—10, 12, 14, 20 and 24 inch wheelbase, priced from—

**11.95 to 26.95**

Well Built WOODEN WAGONS

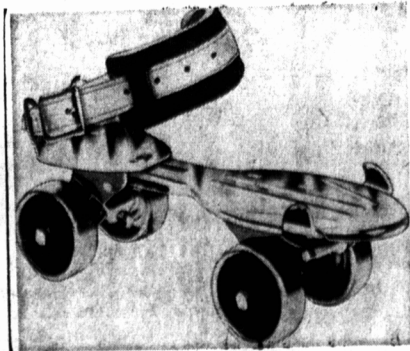
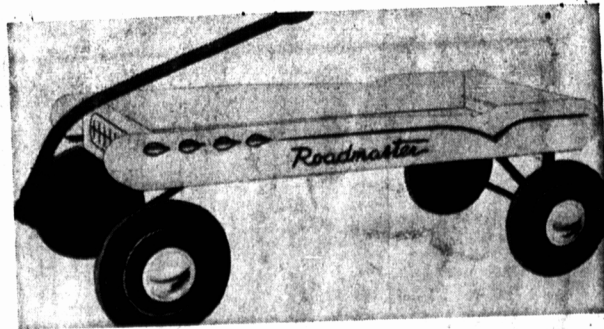
Strongly made with heavy metal frames and body of weatherproofed hardwood in a natural finish. There are three sizes from which to choose, priced from—

**9.98 to 19.98**

Sturdy METAL WAGONS

Heavy gauge steel construction throughout with rolled edge to box. Finish is red baked enamel. Wheels have Congo lifetime bearings and rubber tires, priced from—

**2.98 to 13.95**



"Free Wheeling"

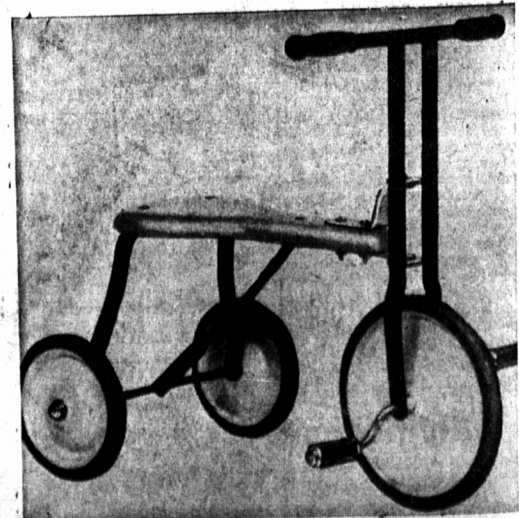
**ROLLER SKATES**

Rugged, good looking and built for fun! Precision formed ball bearings and a modified girder type frame of heavy gauge steel fitted with leather straps, priced—

**3.98 and 5.98**

SKIPPING ROPES — **25c**

Large Assortment of  
**RUBBER BALLS**  
10c to 98c



Extra Fun For The Wee One!  
**PEDAL KAR**

The frame is of heavy gauge flat steel fitted with rear support and natural hardwood seat. Easy to run and manipulate for the smallest child.

Low Priced

At —

**6.95**

**HOLMAN'S Both Stores SPORTING GOODS**  
For The Best In Playtime Pals!

**HOLMAN'S ACCEPT LONG DISTANCE COLLECT CALLS**

For Any Order Over 3.00 From Any Point In P. E. I. — Until May 12th

CALL SUMMERSIDE 2222  
(Except Groceries)

CHARLOTTETOWN 6525