

# Chauffered sightseeing tours a new innovation

Would you like to see the world's largest ice breaking car ferry, swim in the warmest salt water north of Florida, visit the Historic Confederation Chamber, where the first meeting of the Fathers of Confederation was held in 1864, or sun bathe on some of the finest beaches to be found anywhere along the Atlantic coastline of North America?

All this and more can be accomplished by taking an Abegweit Sightseeing Tour of Prince Edward Island, a new innovation to P.E.I. An automobile tour by an experienced chauffeur will help you get the most out of your stay on the island.

A choice of six tours is offered by Abegweit Sightseeing Tours and any one of these experiences promises to be both interesting and relaxing.

**FIRST TRIP**  
Tour No. 1 features the National Park, Green Gables and the Acadian fishing village of Rustico.

We leave Charlottetown by car via route 2 to Bedford corner, from here we follow route 6 north through Bedford which got its name from the fourth Duke of Bedford. We pass through Corran Bay, Grand Tracadie and enter the National Park from Dalway where miles of smooth, sandy beaches stretch out as far as the eye can see. This is the start of our famous North Shore beaches. We stop briefly

to view Dalway House, built in 1895 by Alexander MacDonald of Cincinnati, Ohio.

On entering Stanhope about a mile further west we find trailer parks, tenting grounds, camping areas, play ground facilities, picnic areas and the finest beaches in North America. Our guide then swings westward following the seacoast along the Gulf of St. Lawrence, crossing the newly constructed Covehead Bay bridge where lobster boats are moored to the jetty below.

After a short drive we enter Rustico, an early French settlement where the world's first automobile originated. We then proceed through North Rustico, center of deep sea fishing on P.E.I. and visit the only wildlife park on the island. This park features 110 animals including 56 species native to the Atlantic region.

Our guide then turns westward once more. This time towards Cavendish via the Gulf Shore Road overlooking the sparkling waters of the Gulf of St. Lawrence. One enters Cavendish to find one of the most beautiful areas on the island made famous by Lucy Maud Montgomery in her book Anne of Green Gables. The car stops and after lunch a visit to the home of Anne, a stroll down Lovers Lane and a walk through the haunted woods will be most interesting. Tour No. 1 then leaves Cavendish via route 13 which takes one through

beautiful pastoral scenery back to the capital.

**SECOND TRIP**  
Tour No. 2 which takes in all of No. 1 including Green Gables and the National Park also features the Woodleigh Replicas at Burlington. These miniature castles and world famous buildings are known as the Woodleigh Replicas.

The oldest Presbyterian church in Canada, located at New London, is known as the Geddie Memorial. Most people here are of English descent. The next stop will be at the frosted food plant at New Annan where an explanation of food processing is provided by factory officials.

Tour No. 3, known as the western tour, includes tours No. 1 and No. 2 and also features a visit to the Federal Experimental Fox Farm near Summerside, the only one of its type in Canada which got its start in 1910.

North of Summerside is the Malpeque Bay—World famous for its oysters.

**THIRD TRIP**  
Tour No. 3 then leaves Summerside and enters Borden where a year round connection with the mainland is maintained by the world's largest ice breaking car ferry—the MV Abegweit which makes her daily nine-mile crossing to the mainland.

The return trip to Charlottetown via the Trans Canada Highway includes a pleasant drive through a predominantly agricultural country with its rural landscape enhanced by well-cultivated farmlands.

**FOURTH TRIP**  
Tour No. 4 takes highway No. 2 to the eastern section of the island with the first stop at Scotchfort. This area was originally settled by the French who called it St. Louis du Nord-est in 1772.

A few miles further east is the first Catholic Church built by Rev. Angus MacEachern, the first Roman Catholic Bishop of Prince Edward Island. Here also was established a Roman Catholic College which was the centre of Catholic education until 1835, when it was succeeded by St. Dunstan's University in Charlottetown.

St. Peter's, the next prominent village on the tour was settled by a few shipwrecked French sailors who managed to establish themselves and prosper.

Souris, home of the dragger fleet with the finest beach areas in eastern P.E.I., got its name from the French word "souris" meaning mice because of an invasion by these rodents early in the history of the province. Here are located Usen Fisheries and Eastern Fisheries, which handle thousands of pounds of fish landed by the draggers. A brief tour of the plant will be conducted with explanations of the packing processes.

The tour then swings westward toward Georgetown, but before arriving there it stops at the summer home of the famous playwright Elmer Harris, famous for Johnny Belinda.

After lunching and relaxing at the Kingsway Motel the tour continues through farm country which borders on the Brudenell River.

The Brudenell Park is the location of an old Scottish settlement whose first settlers encountered trouble mooring in the channel and were shipwrecked. Graves of these early explorers are located on Brudenell Island and inscriptions are still legible.

The last stop on this tour takes place at Georgetown, capital of King's County. Georgetown now has a new fish plant known as Gulf Garden Foods which provides employment in this thriving community.



MILES OF GOOD ROAD WIND THROUGH QUIET COUNTRYSIDE

**FIFTH TRIP**  
Tour No. 5 known as the Southern Tour, includes all locations visited on the previous tour and also features a tour of the museum at Montague, and a stop at Moore's wild bird sanctuary where birds receive winter lodging and are protected from the ardent island hunter. This sanctuary is home to thousands of wild birds which stop here to rest on their long migrations in the spring and fall.

The next place on our tour includes the fishing village of Murray River, named by Surveyor Holland in honor of General James Murray, who was governor of Quebec from 1764-1766. This village is primarily an agricultural community.

Wood Island, which is the second ferry terminal between the island and Nova Scotia, harbors car ferries which make routine trips across Northumberland Strait to the mainland.

The Northumberland Park, an ideal spot for a picnic, provides a quiet and relaxing atmosphere on the doorstep of Northumberland Strait.

The next stop is at Belfast, called by the early French settlers "la belle face" because of its French name its present name-Belfast was probably derived.

In 1803 approximately 800 highlanders arrived under the leadership of Lord Selkirk. These Scottish people raised a beautiful memorial to the district when they erected St. John's Presbyterian Church. The tower design was taken from Christopher Wren and the entire church was built by men who carried timber up the hills on their backs and squared them with a broad axe.

A visit inside the church will reveal memorials to Mary Douglas, daughter of Lord Selkirk, whom he brought to the island with him, and to Rev. John MacLennan, the church's first pastor. Every man but one who helped build the church is buried in the grave yard. There are stones marking the resting places of Mary Douglas, only daughter of Lord Selkirk, and Malcolm MacRae, the only Scotsman killed in the Belfast Riot which took place on election day, March 1st, 1874.

Our tour then winds its way toward Charlottetown and six miles outside of the capital the car stops on a magnetic grade in the village of Pownal. The automobile, with its motor off, appears to be coasting backward and uphill.

As tours No. 4 and No. 5 near their ends, Charlottetown, capital of Prince Edward Island with a population of 18,500, boldly greets us as our touring veh-

icle enters the city over the Hillsboro River.

**SIXTH TRIP**  
Tour No. 6, the South Shore National Historic Park in Rocky Point. This park is on the site which the French, during their occupation of the island, called Port la Joie. This is a quiet, restful spot where at one time Micmac Indians lived on a small reservation. There is a reconstructed 16th century Micmac Village in the community.

Also included in this tour is Stratgartney Park on the Trans Canada Highway and MacMillan's Flower Gardens in Cornwall.

As the tour returns to the city once again, St. Dunstan's University, the island's only university is located approximately two miles from the heart of Charlottetown. This institute of learning educates students from all parts of the globe with degrees awarded in the Arts and Sciences.

Before taking an Abegweit Sightseeing Tour be sure to stock up on film, preferably color film, because red soil, green fields and blue water of Prince Edward Island combine for pleasing results in color shots.

## Preparing outboard for another season

Now hear this! All hands will report for another season of fun afloat.

North, south, east and west, it's the traditional time to get your rig ready for a full season of fishing, cruising or water skiing. Here are a few tips from Don Wood, service manager at Outboard Marine Corporation of Canada Ltd., in Peterborough. The entire tune-up job shouldn't

take more than a couple of hours.

If you don't know anything about motors don't try to tune up your own outboard motor. Take it to a dealer. But, if you have some knowledge of mechanics, start with the ignition system. Trying to squeeze a few more hours from bad spark plugs will invite trouble. Install

new ones or have the old ones cleaned and re-gapped.

Ignition wiring and connectors with worn spots or cracks, defective points, condenser or coil, can also lead to hard starting. An inexpensive spark checker will tell you if everything is shipshape. If you are in doubt, consult your marine dealer.

The entire fuel system should be checked and cleaned. The fuel bowl should be removed and inspected. If the fuel filter is clogged, it should be replaced. Acetone or lacquer thinner will remove deposits from the fuel tank. Fuel left over from last season should be discarded.

Change the lubricant in the lower unit, following manufacturer's recommendations in the owner's manual. If the old lubricant shows signs of water, have the lower unit inspected at your dealer. The owner's manual will also show all the fittings that need lubrication. Apply a light coat of oil to all metal parts.

No spring tune-up is complete without close inspection of your outboard's propeller. Even if it doesn't show signs of excessive wear, have the pitch checked by your outboard dealer. Improper pitch can mean poor performance, and in some cases, motor damage. A damaged prop should be replaced, and the old one kept as a spare.

Before patting yourself on the back, conduct a final visual check to make sure all screws have been replaced and all fastenings are properly tightened.

**RUSSIAN CITIES GROW**  
The Soviet Union now has 20 cities of more than 500,000 people, eight of them with more than 1,000,000.

**Picture perfect clothes for your vacation**

**Get Ready For Vacation**

Get your summer clothing ready now and be prepared for the vacation period. The newest in cleaning methods and the finest of care is given your garments at:

**STERNS LTD.**  
Laundry and Dry Cleaning  
234 Kent St. Dial 4-6501

Add Extra Pleasure To Your Vacation . . .  
Treat Your Family And Dine At The

## TOWN and COUNTRY

We welcome all our friends and visitors to Prince Edward Island. When in Charlottetown drop in and try some of the taste tempting dishes below

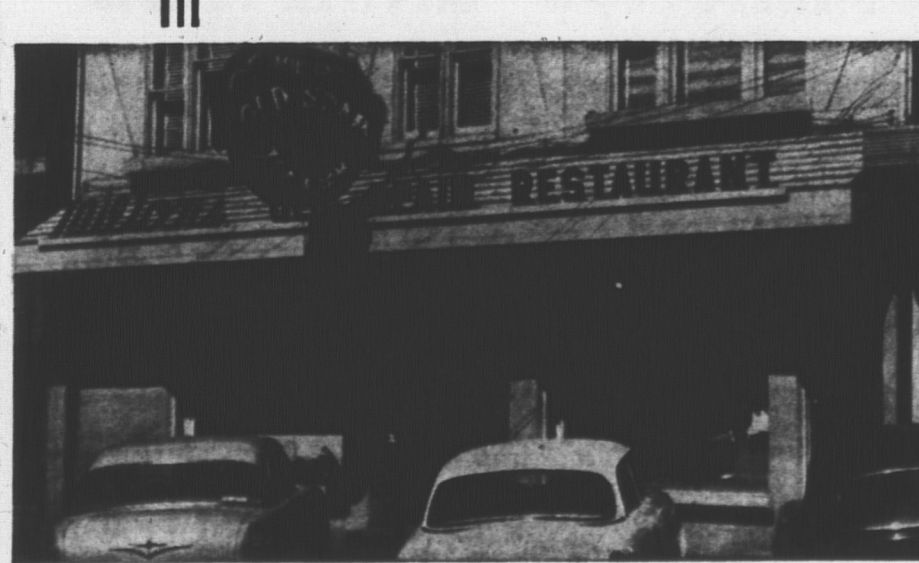


- OPEN DAILY 6 A.M. TO 2 A.M.
- SOUTHERN FRIED CHICKEN
- SEA FOOD VARIETY
- SMOKED MEAT ON EYE

## TOWN and COUNTRY

CHARLOTTETOWN'S FINEST RESTAURANT

219 Queen St. For Delicious Take-out-Orders Phone 2-2282

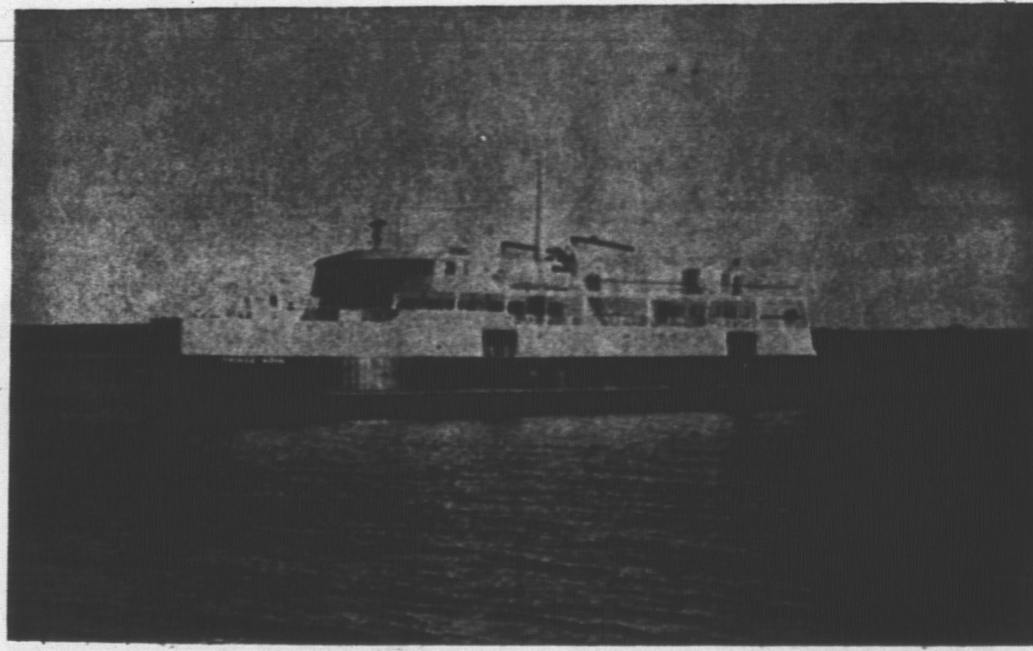


## WELCOME TOURISTS TO P.E.I.

And when in Prince Edward Island be sure to eat at the 'OLD SPAIN' For the finest foods and a friendly atmosphere make it a part of your trip . . . Also for a cool refreshing treat stop at our 'DAIRY KING' Next Door.

## MILTON'S OLD SPAIN

151 Kent Street Dial 4-4336



## MV PRINCE NOVA The Ideal Way To Visit PRINCE EDWARD ISLAND

The newest addition to the fleet of Northumberland Ferries Ltd., offers the visitor to P.E.I. a glimpse at the most modern concepts of design and luxury in this area. The engines are larger than previous ferries making possible the 14 mile crossing in one hour. With the latest in navigational aids and excellent passenger accommodations this is really an important part of any vacation plans to visit P. E. Island.

### The Prince Nova Offers

- Passenger accommodation of 300
- Automobile accommodation for 60
- Panoramic view from passenger area
- Latest safety features and life saving equipment.

### SAILING SCHEDULE 1965 (Daily Including Sunday)

A.D.T.	LEAVE WOOD ISLANDS, P.E.I. & CARIBOU, N.S.			
May 1—May 31	9:00 a.m.	12:00 noon	3:00 p.m.	6:00 p.m.
June 1—June 30	8:00 a.m.	10:00 a.m.	12:00 noon	2:00 p.m. 4:00 p.m. 6:00 p.m.
July 1—Aug. 30	8:00 a.m.	9:35 a.m.	11:10 a.m.	12:50 p.m. 7:15 p.m.
	2:30 p.m.	4:05 p.m.	5:40 p.m.	
Aug. 31—Sept. 26	8:00 a.m.	10:00 a.m.	12:00 noon	2:00 p.m. 4:00 p.m. 6:00 p.m.
Sept. 27—Oct. 17	9:00 a.m.	12:00 noon	3:00 p.m.	5:00 p.m.
Oct. 18—Oct. 23	9:00 a.m.	12:00 noon	2:00 p.m.	4:00 p.m.
Oct. 24—Dec. 20 A.S.T.	8:00 a.m.	11:00 a.m.	1:00 p.m.	3:00 p.m.

## NORTHUMBERLAND FERRIES LTD.