

OPEN FRIDAY
TILL 9 P.M.
SATURDAY TILL 5

CTC CANADIAN TIRE CORP'n



LICENSE TRIM
Flexible fluorescent red vinyl plastic
... to enhance the beauty of your car
... perfect hands when washing, per-
fectly safe, easy to install. Trim, size
fit. Fair

.64

AUTOMATIC WINDSHIELD WASHER



A touch of the finger tips forces two jets of solution onto the windshield for clear vision. With fittings.

3.98

Windshield Washer Anti-freeze
20-oz. .79

MOTO-MASTER DRY-TYPE AIR FILTER



Let your car breathe. Stop wasting gas. Replace elements, gaskets & air power. An investment.

1.95

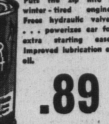
HEAVY-DUTY BRAKE FLUID



Specialty formulated, proven to perform perfectly at temperatures 100° above the 200° needed by brake fluids in today's cars. 20-oz.

.98

BOOST HORSEPOWER POW-R-BOOST



Puts the air into a motor's intake engine. Boosts hydraulic valves ... powerizes car for extra cutting power. Improved lubrication of oil.

.89

KEEP IGNITION DRY IGNITION SPRAY



Laughs at moisture ... seals it out for easier starting during wet, damp weather. Puts an end to some ignition troubles. 4-oz. spray bomb.

.94

check compare save

**HEADQUARTERS
FOR ALL YOUR
FISHING SUPPLIES**

DELUXE "NAVIGATOR" BOW LIGHT

Attractive and stylish ... to enhance any boat. Panoramic, wide-angle lens. Triple chrome plating. 6 or 12-volt.

5.19

Pennant Pole—For above. 13" high. Chrome plated. **1.49**

MAKE YOUR CRAFT READY FOR FUN AFLOAT



**POLYETHYLENE ROPE
BOAT LADDER**

A must for all craft ... provides swimmers with safety when entering water or climbing aboard. Strong. With 3 cedar steps. 36" high.

4.98



**MERMAID SEALED-BEAM
SEARCHLIGHT**

Smarter designed—chrome plated brass. With handy on-and-off switch. 4 1/2" lens. 6 or 12-volt.

8.95

As above—but with a 6" lens **12.59**

MOTO-MASTER GUARANTEED RE-MANUFACTURED AUTOMATIC TRANSMISSION Exchange

**REBUILT
WITH
ONLY
THE
FINEST
QUALITY
PARTS**



**GUARANTEED
90 DAYS
OR 6,000 MILES**

Completely dynamometer checked and tested under driving conditions to test comparable to original equipment.

CAR AND YEAR EXCHANGE PRICE

Chev., 1950-60, 6-cyl., V-8, single range	150.00
Ford and Meteor, 1951-59, 6-cyl., V-8, single range	150.00
Dodge and Plymouth, 1957-59, 8's, Powerflite	190.00

Also available for other cars. Expert installation extra. Moto-Master Standard Re-Manufactured Transmission, Exchange, as low as **54.60**

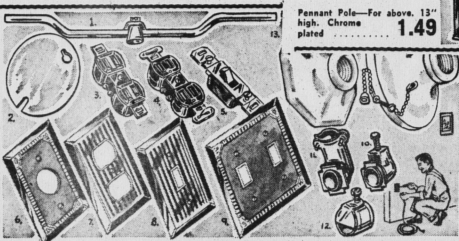
CLUTCH Assembly Exchange

We will exchange your clutch plate and pressure plate for a factory rebuilt "precision set" matched assembly—ready to install. Guaranteed.

Complete Clutch Assembly Plate

Make and Year (Spec. 44-99, (most))	15.40 6.35
Dodge, Pkg. 42-99, 6-cyl. (except fluid drive)	15.50 7.95
Ford products 48-64 (most)	15.80 7.25
Pontiac, 48-54, (most)	11.85 6.40

Also available for most other popular cars



FOR THE "DO-IT-YOURSELF" ELECTRICIAN

- | | | | | | |
|--|------|--|-----|--|-----|
| 1—OUTLET BOX MOUNTING BAR—For 12 to 18" centers; easy to install | .29 | HEAVY DUTY SILENT SWITCH—Single Pole; 15 amps. Silver contacts | .59 | 10—OUTLET BOX CONNECTOR—For Romex, BX, etc. | .12 |
| 2—PLAIN COVER—For 4-inch outlet box | .13 | 4—SINGLE OUTLET PLATE—Brown Bakelite | .15 | 11—90-DEGREE ANGLE BOX CONNECTOR—For Romex, BX, etc. | .27 |
| 3—DUPLICATE OUTLET RECEPTACLE—Brown | .16 | 7—DUPLICATE OUTLET PLATE—Brown | .08 | 12—BOX CONNECTOR | .07 |
| 4—BAKELITE DUPLEX RECEPTACLE—3-wire grounding type | .39 | 8—WALL PLATE—For single toggle switch. Brown Bakelite | .08 | 13—CEILING RECEPTACLE—For 3 1/2" or 4" outlet boxes. For use with wall switch. Porcelain | .39 |
| As above, but Ivory | .49 | 9—2-GANG TOGGLE SWITCH WALL PLATE—Brown Bakelite | .19 | 14—CEILING RECEPTACLE—As above but with pull chain | .64 |
| 5—TOGGLE SWITCH—Brown Bakelite | .21 | Ivory Bakelite | .29 | WIRING CONNECTOR—Not illustrated—Bakelite. Pkg. of 6 | .16 |
| SILENT MERCURY SWITCH—Brown Bakelite | .98 | 6—3-GANG PLATE—Brown Bakelite | .28 | | |
| Ivory | 1.19 | | | | |
| Illuminated | 1.69 | | | | |

- OUTLET BOXES**
- 4" with knock-out
 - 3 1/2"
 - 4" with Romex type clamps
- SWITCH BOXES**
- With Clamps, Romex
 - Low voltage, Romex
 - BX clamps
- SURFACE WIRING DEVICES**
- Duplex Receptacles
 - Pull Chain Light Switches
 - Keyless Light Switch
 - 3-Way Toggle Switch
- EXTENSION CORD SETS**
- 2-Wire sets for power tools, etc.
 - 10-ft. 35-ft. 50-ft. 75-ft.
- ROMEX WIRE**—3-wire type, 2-14-ga. wire plus ground. Pk. 250-ft. **12.49**
- As above, but 12-ga. Pk. 250-ft. **11.21 9.98**
- Heavy Duty Service Wire—3-wire 10-ga. with ground. Pk. **.23**
- Galv. Straps—For Romex—18-in. **.25**
- 25 for 18-in. **.79**

SUPEROYL "10-30"

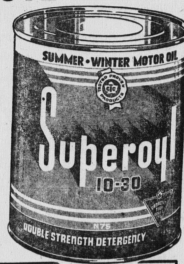
100% PURE PENNSYLVANIA—THE WORLD'S FINEST!

The perfect lubricant for your kind of driving.

- For high-speed driving
- For stop-and-go driving
- Multi-grade for winter and summer

WORTH 75¢ a QT.

54 QT. 2.10 GAL.



Replace Oil Filter Element Every 5,000 Miles

Moto-Master Elements maintain superior performance ... lengthen engine life ... filters out harmful dirt, sludge, etc. to keep oil clean and fresh for lively power even up to 5,000 miles between changes. As low as **.94**

**"TORPEDO"
BOW-LIGHT
PENNANT POLE**

Smart, modernistic design in "Slim Line" appearance. Chrome plated. 12" high pole. Available in 6 or 12-volt.

3.75

"New-Car" Quality LEAF SPRINGS

Precision-built of special heat-treated, oil-tempered alloy steel and tested for correct arch and temper.

Chevrolet and Canadian Pontiac, 1949-57	9.80 to 14.60 ea.
Ford and Meteor, 1949-59	10.50 to 18.20 ea.
Dodge and Plymouth, 1936-59	10.15 to 18.50 ea.

Similar low prices for commercial vehicles.

Front Spring Bushings—for most cars **.50 to 1.25**

Rear Hangers—for most cars **1.10 to 1.95**

There's a Power-Sealed Dry-Charge

MOR-POWER BATTERY

FOR EVERY CAR AND TRUCK

—at Canadian Tire's **WHOLESALE DISCOUNT SAVINGS!**

KEYSTONE	HI-CAPACITY		SUPER-SERVICE		30-Months Insurance-Guarantee		48-Months Insurance-Guarantee	
	Mir's List Price with trade-in	C.T.C. Discount	Mir's List Price with trade-in	C.T.C. Discount	Mir's List Price with trade-in	C.T.C. Discount	Mir's List Price with trade-in	C.T.C. Discount
12-VOLT DRY-CHARGE—To fit late model Chev. products (most), imports, Studebaker and many others.	28.96	19.95	20.99	14.45	16.81	11.95	11.95	7.95
6-VOLT DRY-CHARGE—Dodge and Plymouth 1932-55, Pontiac (most) 1949-54, and many others.	23.96	15.95	15.51	11.45	12.05	7.95	7.95	

Similar savings for most other cars and trucks. Instructions—30¢ extra.

WET TYPE—\$1.50 to \$2.00 LESS than above prices.

SUPER-LASTIC COUNTRY GENTLEMAN

FREE ROAD-HAZARD INSURANCE—No extra cost. No deductibles. No co-payments. No waiting periods. No exclusions. No limitations. No conditions. No restrictions. No fine print.

NO TRADE NEEDED—TO GET THE BEST TIRE BUY IN TOWN!

EXTRA BONUS

If you have an old tire, we will PAY YOU CASH, up to \$3. each—for unused miles

SUPER-LASTIC NYTEX

The Tire that combines the BEST FEATURES of both NYLON & TYREX

SUPER-LASTIC COUNTRY GENTLEMAN

TWIN-PLY YEAR-ROUND DELUXE NYLON PROVIDES A SURE-FOOTED QUIET RIDE ANY DAY, EVERY DAY

All new—a multi-season power tread to get you going, keep you going—no matter the conditions or weather. The seasons are the reasons for installing a pair of COUNTRY GENTLEMAN on your rear wheels ... there's no seasonal changeover.

12.95

750/14 Tubeless 14" 78/15 77/15 Installation 80¢ extra

A new, safer highway tire, with features you can't get in original equipment

No longer do you need to wonder whether the special features and qualities of NYLON or TYREX are best for your kind of driving ... Super-Lastic NYTEX combines the best features of both—for smooth, quiet running, high-speed driving ... free from any trace of "morning thump" annoyance. Yes, you have the best of both in one GREAT TIRE!

Associate Store
CANADIAN TIRE CORP'n
ASSOCIATE STORE

STEWART & MacRAE LTD.

96 QUEEN ST. DIAL 4-8560