

# It's Christmas TIME ... SO IT'S SMALLMAN'S

## LADIES' PARTY DRESSES

For that very special evening. In materials of Satins, Rayon Taffeta, Organza. In floral and plains. In sheath, slim and full skirts. In colors of Pink, Red, Beige, Turquoise etc. Sizes 7-17.

**\$16.95 - \$35.00**

## LADIES' DRESSES

In materials of Jersey, Rayon Crepes, Arnel, Pure Silk, all wool double knits. Styled in gored, slim, sheath and full skirts. One, two and three piece styles with v-neck and square necklines. Short and 3/4 length sleeves. In florals, checks and plains. In a rainbow of new winter shades. Sizes 5-17, 8-20, 14 1/2-26 1/2. Also in petite sizes for heights 5'11" and under. Priced from

**\$6.98 to \$35.00**

## JEWELLERY

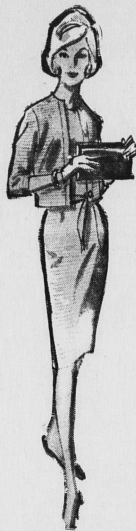
Featuring bracelets, pin and earring sets, necklace and earring sets and pendants. Also earrings in pierced look and clip on styles.

**\$1.00 - \$5.00**

## FIRST QUALITY SEAMLESS HOSE

In colors classic Beige, Teak Brown and Light and Medium Taupe.

**79c - 99c**



## LADIES' Knitted Suits

BY LADY ANNE

Of 100% pure wool knits. In two piece and three piece pullover and cardigan styles. In colors of Brown, Green, Red, Amber, Black and Ivory Frost. Sizes 12-20.

**\$19.95 - \$29.95**

## SHORT and LONG FLANNELETTE GOWNS

In attractive prints and styles. Colors Gold, Pink, Orange, Green, Blue, and Pink.

**\$2.98 - \$3.98**

## FLANNELETTE PYJAMAS

In both long and capri styles. In both plain and prints.

**\$2.98 - \$3.98**

## NYLON NEGLIGEE SETS

In finest nylon with delicate trim. Colors Pink, Blue, and White.

**\$19.95 set**



Ladies'

## BLOUSES

by Shamrock

Of fine quality little or no ironing cottons. In half and long sleeves. In colors of White, Beige, Tan, Turquoise, Gold, Green, Blue, and Pink. Sizes 10-20.

**\$2.98 to \$3.98**



## EVENING BAGS

In Gold and Silver brocade, and plain Black with pearl trim. Attractive styles to complete your Christmas wardrobe.

**\$1.98 - \$4.98**

## GLOVE & SCARF SETS

In Nylon, scarves in various designs and gloves in both long and short styles. Colors White, Black, Chocolate, Beige, Green.

**\$2.98 - \$3.98**



## Angora and Wool GLOVES

In all the latest styles and colors. Also wool gloves with leather palms.

**1.98 to 4.98**

## Men's TOPCOATS

Harris tweed, cashmere, all wool worsteds. Nylon laminated in plain and neat patterns. Sizes 35-46.

**\$29.95 - \$65.00**

## MEN'S COLORED DRESS SHIRTS

In stripes and neat checks. Quilted or nylon pile lining. In medium and dark grey. Sizes 14 1/2 to 17 1/2.

**\$5.00 to \$6.00**



## MEN'S WALLETS

Top grain leathers. With or without zipper.

**\$2.95 to \$7.00**



## MEN'S FELT HATS or Billmore

Styles in all new colors. Sizes 6 5/8 to 7 1/2.

**\$5.95 to \$8.50**



## MEN'S ALL WOOL SPORT COATS

English worsteds and Tweeds. In plain neat patterns and checks, new shades. Two or three button styles.

**\$24.95 - \$37.50**



## MEN'S TIE AND MATCHING SOX SET

Christmas boxed.

**\$2.95 to \$4.50**

## MEN AND LADIES' LUGGAGE

By Samsonite. Train cases o'nite and wardrobes.

**\$25.00 - \$59.50**

## MEN'S SUITS

All wool English dyed worsteds. Single breasted style, two button. In charcoal, Greys and Neat patterns. Complete sizing 35-46.

**\$49.50 - \$75.00**

## Men's DRESSING GOWNS

Flannel in checks and plain colors. Sizes S. M. L.

**\$12.95 and \$14.95**



## MEN'S Bomber Jackets

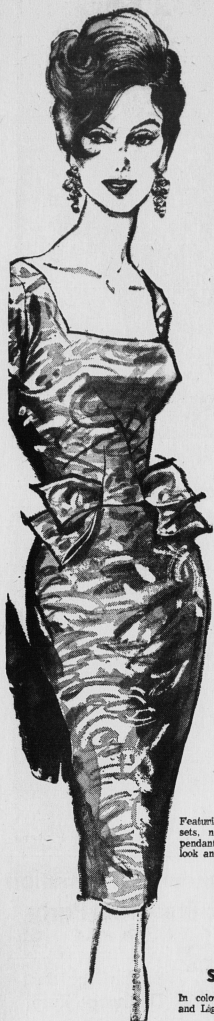
In plain and two-tones. In laminated, Heke Suede, and all nylon. Zipper and button front. In quilted or sherpa lined. Colors Loden, Brown, Black, Charcoal and Gold. Sizes 34-48.

**13.88 to 29.95**

## MEN'S CUFF LINKS TIE BAR SETS AND

New designs, new colors. All boxed.

**\$3.50 to \$8.00**



## MEN'S SUBURBAN COATS

In plain and neat check. Quilted or nylon pile lining. In medium and dark grey. Sizes 35-46.

**\$22.95 - \$34.95**

## Men's Scarves

All wool, plains and plaids. Also white.

**\$1.95 to \$3.95**



## MEN'S LEATHER Dress Gloves

Colors Grey, Black and Brown. Sizes 7 1/2 to 11.

**\$2.98 to \$5.95**