

**Canada Packers  
Govt. Inspected**

*No fancy tags or meaningless names  
to cover up for inferior quality!*

**TRIMMED  
EXTRA CLOSE!**

*All excess bone and fat are  
removed to give you more good meat!*

**SUPERIOR  
QUALITY!**

*Quality that preserves and  
promotes GOOD HEALTH!*

**OUTSTANDING  
TASTE!**

*Delightful taste that makes  
eating a satisfying pleasure!*

Here's the fine quality that will serve up to a dream. Its unmatched tenderness and flavor will have your family's hearts turning flip-flops and surely make you a Queen for a Day. And just look at the LOW price Foodland has tagged on it... it's sure to meet with the thriftiest budget... Won't you buy several pounds today?

# STEAK

★ ROUND ★ SIRLOIN ★ T-BONE ★ PORTERHOUSE

# 65<sup>c</sup> lb.

LEAN

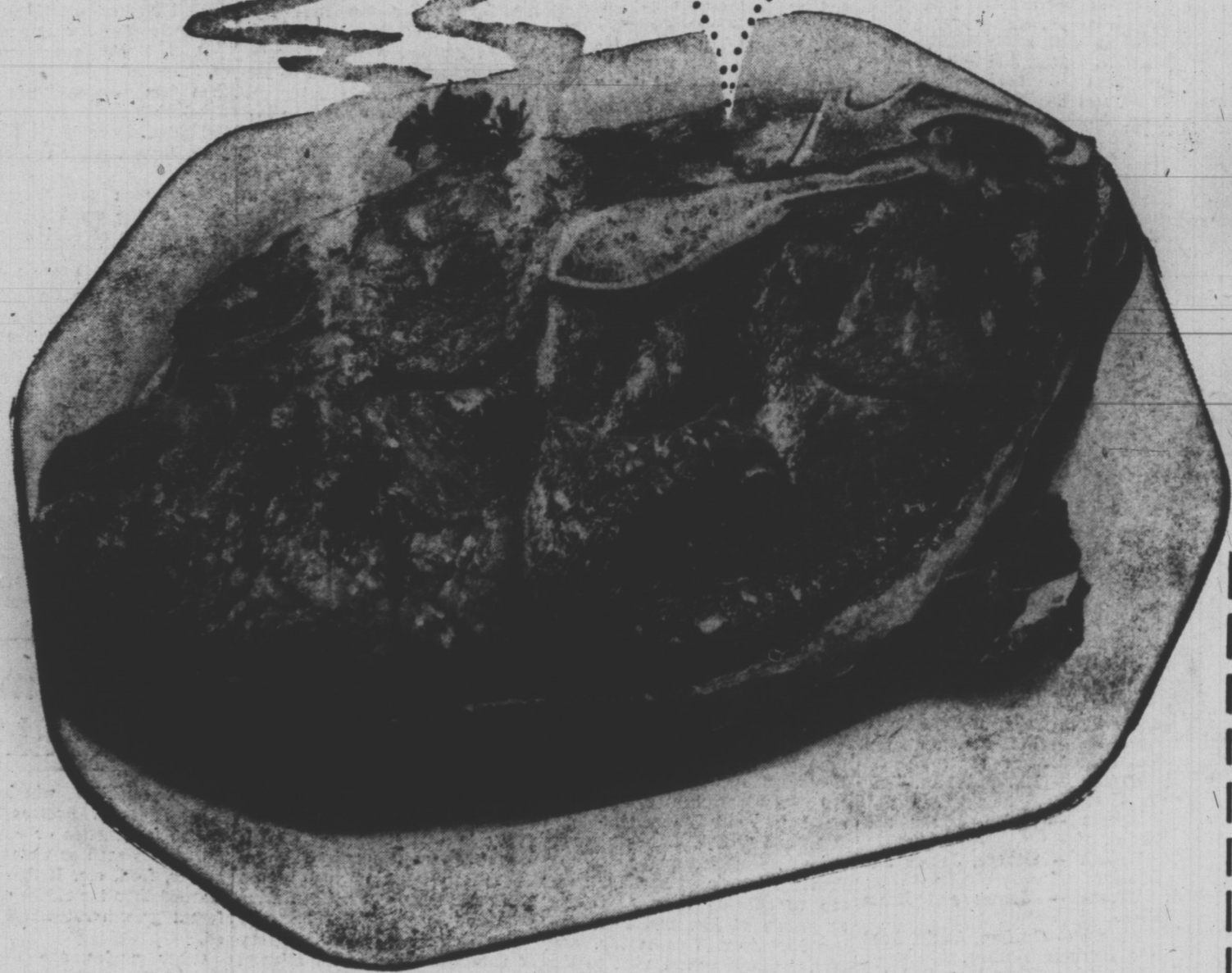
**GROUND BEEF**

2 lbs. **85<sup>c</sup>**

DEVON PICTURE PAK

**BACON**

1 lb. pkg. **55<sup>c</sup>**



FOODLAND PHONE SHOPPING SERVICE

# dial 8519

Charlottetown Store Only

**CHARLOTTETOWN**

Monday 9 A.M. to 6 P.M.  
Tuesday 9 A.M. to 6 P.M.  
Wednesday 9 A.M. to 6 P.M.  
Thursday 9 A.M. to 9 P.M.  
Friday 9 A.M. to 10 P.M.  
Saturday 9 A.M. to 9 P.M.

**SUMMERSIDE**

Monday 8.30 A.M. to 5 P.M.  
Tuesday 8.30 A.M. to 5 P.M.  
Wednesday 8.30 A.M. to 5 P.M.  
Thursday 8.30 A.M. to 5 P.M.  
Friday 8.30 A.M. to 9 P.M.  
Saturday 8.30 A.M. to 12 P.M.

*Clip and Save For  
Future Reference!*

JUBILEE

**CORN BEEF**

12 oz. tin **2 for 63<sup>c</sup>**

CHEERIO

**PORK and BEANS**

20 oz. **2 for 35<sup>c</sup>**

HEINZ

**TOMATO JUICE**

20 oz. **2 for 25<sup>c</sup>**

SILVER LEAF

**LARD**

1 lb. pkg. limit of 4 lbs. per order **2 for 21<sup>c</sup>**

PET INSTANT

**MILK POWDER**

4 qt. size **35<sup>c</sup>**

YORK

**CREAM CORN**

20 oz. tin **2 for 39<sup>c</sup>**

U. S. ICEBERG

**LETTUCE**

**2 FOR 25<sup>c</sup>**

PINK OR WHITE

**GRAPEFRUIT**

**3 FOR 25<sup>c</sup>**

LOCAL GROWN

**SPINACH**

**2 LBS. 49<sup>c</sup>**

BIRDSEYE-9 OZ. PKG.

**FRENCH FRIES**

**2 FOR 37<sup>c</sup>**

