

# Vast P.E.I. school program sees 14 new schools rise since 1959

An extensive \$3,000,000 school building program by the provincial government to ensure every high school student to attend an excellent high school nears completion after 14 new buildings have been erected since 1959.

The new regional high schools cover the Island from Souris to Tignish and students from a 11 districts in each school zone are provided with transportation in the form of school buses.

Five of the new schools were found to be too small to accommodate the student body and a total of \$70,000 in extensions have been spent to increase classroom space and facilities.

**3,070 ATTENDING**  
After realizing the great need for new schools to replace those being used, the government has now enabled 3,070 students to benefit from the bright and cheerful surroundings a new building creates.

The regional high school program began in 1959 and by the opening of the 1960-61 school year, seven of the schools had been completed and were being used by the students. The program continued with the completion of four more in 1961 and construction on the remaining three got underway last year.

**MONTAQUE LARGEST**  
The \$385,000 regional high school in Montaque was the

largest and most expensive of the new buildings constructed in 1959. The others in this group include: Abram's Village, \$80,000; O'Leary, \$198,000 with \$200,000 extension last year; Montague with a \$175,000 extension last year; Alberton, \$150,000; Tignish \$50,000 with \$ 890,000 extension last year; Hunter River,

\$130,000; and North Rustico, built at a cost of \$48,000 with an extension of \$70,000 during the past year.

A beautiful new \$400,000 high school in Kensington highlighted the 1960-61 group and is one of the largest regional high schools in the province.

Stella Maris Regional High School, built at a cost of \$133,000 will have an additional classroom and facilities extension that will cost the government \$225,000. The Morell Regional High School at a cost of \$300,000 and Englewood Regional High in Crapaud costing \$203,000, completed that group.

Last year work was nearly completed on the three newest schools all in the East Prince County area.

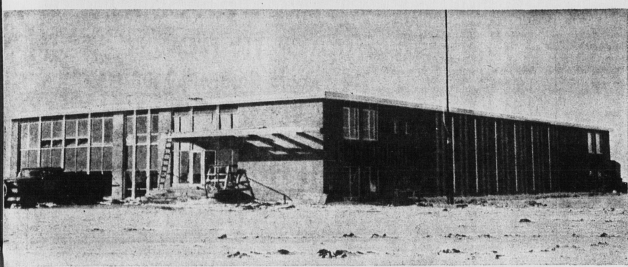
Summerside Rural Regional High School at \$400,000 was the most expensive of this group and is nearing completion while being used by the students.



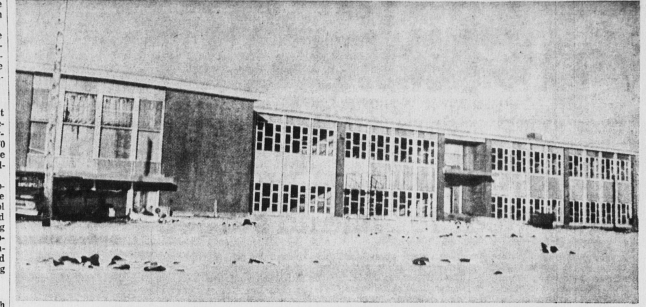
NEARLY \$400,000 SPENT AT O'LEARY FOR SCHOOL AND EXTENSION



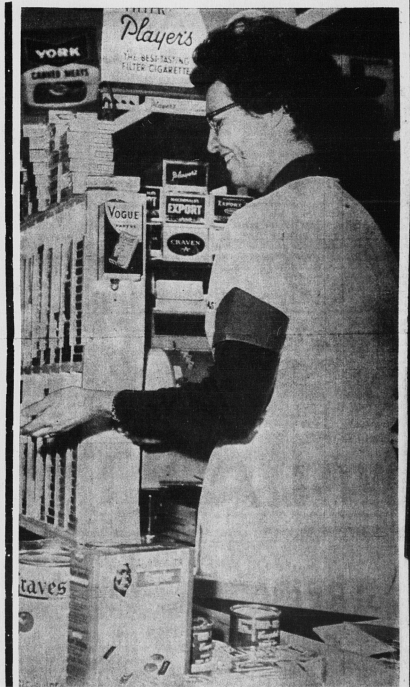
KENSINGTON HAS ONE OF ISLAND'S LARGEST SCHOOLS WORTH \$400,000



VILLAGE OF KINKORA IS PROUD OF ITS NEW \$250,000 STRUCTURE



BRIGHT NEW SCHOOL AT MISCOU CHE. COST GOVERNMENT \$250,000



## there's two sides to every Store-y

Our side of the story is easily and quickly told by the cheerful young lady on the right. She is one of the many cashiers you'll meet at Gaudet's Save-Easy in Summerside. With her constant appealing smile, courteous manner and speedy efficiency, she has become one of the principal "stars" in our story. Through her and others like her, our close personal contact with you is maintained, for as our "ambassador of good will", she is tangible proof of our service and satisfaction.

Now, your side of the story is enacted on the left of the picture, and once more our check-out counter sets the scene. Besides the service and courtesy you know you'll receive here, our check-out counter is the one spot where you can really watch your weekly food savings adding up.

Together, your side of the story, and our side of the story make for a mighty pretty picture. And, best of all, it's a story that always has a happy ending... at our friendly check-out counter.



Granville Street North

Summerside

# RECNATO RAF

Operation Overhaul is constantly underway at the modern plants of **ENHEAT AIRCRAFT**

In Amherst, Nova Scotia, repair and overhaul of Banshees, Trackers, Neptunes and Lancasters is carried on for the RCN and RCAF.

At its new operation in Charlottetown, Prince Edward Island, ENHEAT provides repair and maintenance facilities for the F86 Sabrejet aircraft of the NATO command.

In addition, ENHEAT designs and manufactures airframe components in Amherst, for major suppliers of military and naval aircraft.

**AIRFRAME COMPONENTS  
ALUMINUM FABRICATION  
AIRCRAFT MAINTENANCE**

**ENHEAT AIRCRAFT**  
The Aircraft Division of Enamel & Heating Products Limited, Amherst, N.S., Canada