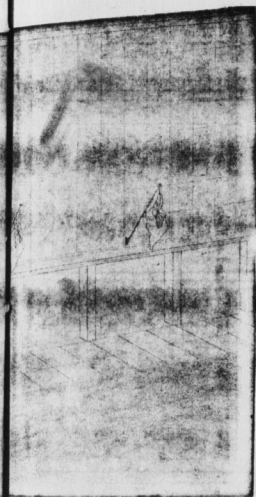


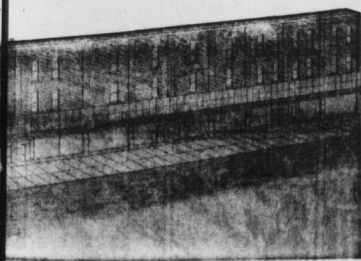
# 'S MOVE!

merchandise  
the Maritimes

expansion  
our history

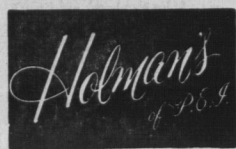


architect's drawing of the new Charlottetown store front



greatest expansion program in their long history present an entirely "new look" on both stores in program is Holman's resolution to "continue to be of the departmental store retail operation". friendly stores dedicated to serving customers. staff and management of Holman's request your modernizing program.

you better... to offer  
... greater ease of  
values!



# MARCH of PROGRESS SALE

Peak Selections are Ready now at Both Our Stores!



specially purchased lovely "drip-dry" **100% Cotton Dresses**

these dresses are wrinkle and soil resistant—won't shrink! Sizes are 12 to 20.

Regularly 8.98  
Sale Feature only

**4.88**

Buy Two at this Low, Low Price!

special dress clearance

Regular 10.95 to 16.95 Values

limited quantity of attractive cocktail and fall dresses, in broken sizes. Sale feature only **2.88**

Regular 5.98 Plaid Slims

lovely color range; well tailored, tapered legs; side zipper and pocket. Sizes 10 to 18. Sale feature **2.99**

Regular 5.98 Banlon Cardigans

button to neck; neat styling; fine ribbing at waist and neck; long sleeves; lovely colors, and so easily laundered. Sizes 14 to 20, only **3.99**

Regular 8.98 Nylon Dusters

sheer glamor in nylon patterned gold; portrait neck, large fluffy bow; fully lined. Royal, Cream-Beige and Lavender. Sizes 12 to 18, and only **5.99**

Regular 2.99 Long Line Brassiere

completely figure controlling, with all elastic back. Nylon lace front, hooks at front. Sizes 32 to 36A and 40B to 42C, only **1.49**

reg. 5.98

**3-Tier Tid-Bit**

sectional style, readily dismantled. 3 graduated sized plates in assorted floral and scenic decorations. Chrome plated handles—

only **2.99**

hilo rail

**Drapery Track**

Star quality, cadmium plated; complete with runners and stops, brackets and screws; in 4', 6', 8' lengths.

Reg. 39¢ ft.

only **25¢ ft.**

reg. 9.95

**Ironing Boards**

all metal folding style, adjustable to the floor. Cool, perforated top; double legs for strength, standard 54" size.

only **7.89**

reg. 6.49

**Electric Teapots**

new earthenware model 6 cup size; lifetime calrod element, dripless spout.

only **5.39**

**150 Girls' Winter Dresses**

sizes 2 to 14x in corduroys, velvets, cottons flannels; full range size and colors; must be cleared to make room for new spring merchandise.



**1/2 Price**

Complete clearance children's mitts and gloves

good quality high bulk orlon in Red, Green, Brown, Gold, Navy; infants to 2 years.

**1/3 OFF**

Final Clearance

**Kiddies' Sno-Suits**

approximately 36 only, sizes infants to 8x in 1 and 2-piece styles.

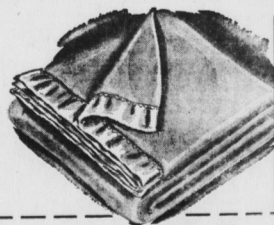
**1/2 Price**

Regular 6.98 Value

**Satin-Bound Blankets**

1st quality nylon and viscose; 6" celanese satin binding; 7 pastel colors; double bed size 72" x 80".

special sale feature **5.44**



Another Special Factory Purchase-10,000 Rolls Wallpaper

• fantastic savings many at less than half price.

• large selection

• wallpaper designs for kitchens, dining rooms, living rooms, bedrooms, any room in your home.

• includes prepaste and plain "Sunworthy" papers.

• plastic coated and washable; easily cleaned

Priced as low as

**29¢** Per Roll



Benjamin Moore's famous

**Regal**

**Wall Satin Paint**

extremely popular Latex base premium quality; quick and easy to apply with roller or brush; fast drying, one hour or less; no unpleasant odour; beautiful range colors, including super-white.

Reg. 2.60 qt.

**1.99 qt.**

Benjamin Moore's

**Dulamel**

**Top Quality Semi Gloss Enamel**

recommended for walls, ceilings, woodwork; produces a smooth, hard film and is easily cleaned; dries overnight to even, semi-gloss finish; large range colors including special non-yellowing white.

Regular 2.65 qt.

**1.99 qt.**

Benjamin Moore's

**Interior**

**Gloss Enamel**

good quality, high gloss for any room where a durable high gloss finish is desired; easily applied with brush or roller; dries overnight; no unpleasant odour; beautiful range of colors including white.

Reg. 2.65 qt.

**1.99 qt.**