

GRADUATION EXERCISES

Miscouche Area
RESOURCES DEVELOPMENT STUDY GROUP
 on
Wednesday May 22nd., 1963
 at 8:30 p.m.
MISCOUCHE REGIONAL HIGH SCHOOL, MISCOUCHE
 Division of Research, Dept. of Industry and Natural Resources.

AUCTION SALE

At Sherbrooke, Tuesday, May 21st
 At 2:00 O'clock

Having sold my farm, I offer for sale the following:-
 One Massey Harris combine clipper, 6 ft. cut; one Fordson major tractor; one 3-furrow tractor plow; one side-delivery m/c on rubber; Cockshutt; one seeder; fertilizer spreader; 2-wheel tractor trailer; turnip sower; roller; light harrows; set of 32 disc harrow, FLURY-Bissel; 6 can drop-in milk cooler; grain crusher; a pulper; hay scotch 24 ft.; double truck wagon; 3 sleighs; manure spreader; separator; set of faners; potato grader; ton platform scales; 2 horses; 1200 and 1400 lbs.; 4 purebred registered holstein heifers; 3 registered jersey heifers; 3 guernsey cows; one grade holstein cow; 3 jersey heifers; quantity of straw; 600 bushels Abegweit oats; one air-cooled engine, Briggs and Stratton; Household Items: Dining room set; tables; chairs; spool beds; 3 sets bedroom dishes; ice chest; 2 butter crocks; several other items too numerous to mention.

TERMS CASH

Frank Townsend Owener
 Robert P. Hogg, Auctioneer

INTERRUPTION NOTICE

There will be an interruption of electric power in the north half of the Town of Montague on Wednesday, May 22nd between the hours of 1:00 p.m. and 4:00 p.m., Daylight Saving Time.
 The areas affected will be from the Montague River north to Poole's Corner.
 Several short afternoon power interruptions will also be required on the Queen's Road between Montague and Victoria Cross during the following week.
 These interruptions are necessary to enable our crews to rebuild and extend our distribution lines to serve the new food plant in Montague.
 Maritime Electric Company Ltd.

CLEARANCE AUCTION SALE

HARRINGTON BRACKLEY PT. ROAD
 WEDNESDAY, MAY 22nd—1 P.M.

Having sold my farm I offer the following:—
 Stock: 1 Guernsey cow just freshened; 1 registered Guernsey cow (freshened); 2 registered Guernsey cows to freshen in Sept.; 1 reg. Guernsey heifer (year old); 1 grade Guernsey cow to freshen; 1 Holstein cow, five years old to freshen June 12. Four year-olds (beef breed); 1 Guernsey calf; 1 Hereford calf; one sow (breed); 15 five week old pigs.
 Machinery: 1 Farmall tractor, Super A; 1 manure spreader on rubber (Cockshutt); 1 two section harrows (new) IH; 1 two furrow plough (Cockshutt); 1 set discs (Cockshutt); 1 truck wagon; 1 hay mower, I.H. 6 ft. cut; 1 wood sleigh; 1 Moody potato digger; 1 Velox electric separator (600 lbs., new).
 Household: 1 Enterprise Range (coal and wood); cream cans. Other articles too numerous to mention.

Terms cash.

Owner: JOHN DOCKERTY
 Auctioneer: CLAUDE CRASWELL

AUCTION SALE

AT BROOKFIELD, SATURDAY, MAY 18
 at 1:00 P.M.

As we have discontinued all custom work we offer the following—1 John Deere model 50 tractor with cultivators (wide front end); 1 John Deere model 50 tractor with cultivators (duel front wheel); 1 John Deere Model A tractor with cultivators (duel front wheel); 1 John Deere 3 bottom plow; 1 John Deere 2 bottom plow; 1 Massey 3 bottom plow; 1 International 2 bottom plow; 1 John Deere 32 Plate disc harrow; 1 Massey drill seeder (13 run); 1 Massey bar hay loader; 1 Brady roto beater; 1 single row power take off John Deere level bed potato digger; 2 oil electric blast heaters; 1 K. G. Brown double head potato set cutter with escalator feeder for same; 1 Friend sprayer 300 gal. tank 10 row boom 2NX pump and self filler; 2 Friend Sprayers 200 gal. tank 10 row boom 2NX pump and filler; 2 New Commander sprayers 200 gal. tank 10 row boom self filler and Commander P.T.O. mounted 4 cylinder pump; 1 Hall Sprayer 6 row boom; 1 Hansen sprayer; 2 Spraymator sprayers; 1 Haines potato dipping tank; 1 Haines potato grader, 18 inch, with roller picking table (Wood); 1 GMC 3 ton truck with hoist and box, 1960; 20 Beef Cross cattle, calves and year olds and numerous other items.

TERMS

Cash on cattle, 6 months credit on approved joint notes at 6% per annum 6% annum off for cash. Large items can be financed through Farm Improvement Loan, and Potato Contracts will be accepted or down payment at \$10.00 per 75 lb. delivered Charlottetown or North Wilshire.

Owner: Jerome O'Brien
 Auctioneer: E.C. Craswell

P.E.I. Pasture Improvement Competition Classes 1963
 (1) Those not entered previously.
 (2) Those who entered previously but not first prize winners.
 (3) Those who won first prize or a Provincial Championship.
 Prizes will be awarded in each county in the above classes.

Entry Form—1963

Name School District

County Post Office

Total Cultivated Acreage Acreage Pasture

..... Supplementary Crops

Livestock Population Young cattle (under 2 yrs)

Mature Cattle Other grazing stock Sheep

Horses
 Entries must be forwarded to The Secretary, P. E. I. Dairy men's Association, P. O. Box 546, Charlottetown by May 27, 1963.

NOTE CHANGE IN DATE

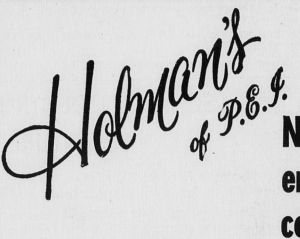
The annual meeting of the Montague and District Artificial Breeding Club will be held in Legion Hall, Montague Wednesday, May 22nd. at 8.30 p.m.
 Guest speakers. Lunch will be served.

The Royal Canadian Legion
Annual Lobster Supper
SOURIS LEGION HOME
 Wednesday, May 29th.
 Suppers served 5 to 9 p.m.
\$1.50 per Plate

Each ordinary and club member may bring a partner and one guest couple.
 Dance after Good Music

FOR SALE

The Farm Credit Corporation offers for sale 265 acres of land at Peake Station, known as the Ralph Gilton farm.
 There are three separate parcels of land which may be purchased together or separately.
 For information contact the Corporation at
 Box 1235 Charlottetown
 R.M. MARTIN, Branch Mgr.
 Atlantic Branch



NOW - protect your health enjoy nights of comfortable sleeping!

SPECIAL MATTRESS SALE
 One Week Only—May 18th to 25th

"Sealy" Quilt Guard Springfilled MATTRESS

- Hundreds of true balance coil springs
- Lifetime flange adds years to the life of your mattress
- Prebuilt border
- Criss-cross quilt top
- Buoyant pure white layer felt
- Extra Durable Decorative Print Ticking
- 38", 46" or 54" sizes

Save 20.00 — Reg. 59.50

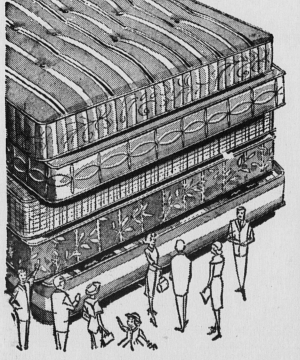
39.50
 MATCHING BOX SPRING AT SAME LOW PRICE.

220-Coil Quilt Top MATTRESS

- Superlock Construction
- Double sisal insulation
- Buoyant new layer felt
- Imported print ticking
- All regular sizes

Save 10.00—Reg. 39.95

29.95
 MATCHING BOX SPRING AT SAME LOW PRICE.



Economy-Priced SPRING FILLED MATTRESS

- 100 Coil Construction
- Button Tufted
- Roll Edge
- All Regular Sizes

Save 5.00—Reg. 24.95

19.95
 AT SAME LOW PRICE.

SAVE 10.00 - SPACE SAVER SALE

● Opens to bed for two
 ● Washrobe compartment under seat
 ● Sturdy hardwood frame
 ● Brown, green, turquoise, charcoal

FLAT FABRIC
 Regular 54.95

44.95
 FRIEZE FABRIC Reg. \$64.95

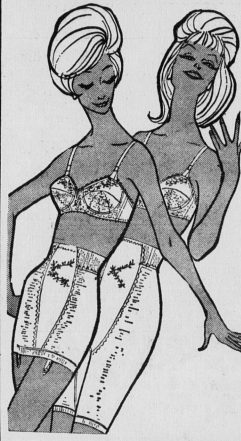


54.95
 No Down Payment - Only 5.00 Monthly

AUCTION SALE
 Darnley
 Saturday, May 25th., 1 p.m.
 Having sold my farm I will sell by public auction stock, crop and farm machinery.
 Including 15 head of cattle, cows freshened and due to freshen, year olds, 2 year olds, calves.
 Machinery: Oliver tractor, trailer, 3 section harrows, side delivery rake, hay mower, hay loader, binder, platform scales, grain crusher, sectional seeder, sleighs, three brooders, cream separators, tractor plow, binder.
 Crop: Quantity of hay, oats and straw.
 Household: Kitchen range, good as new; oil heater (new); kitchen table and chairs; room set; also 32 acres of land, all clear, shore front, ideal for summer cottages. Many other articles too numerous to mention.
 Owner: JOHN BEARISTO
 Auctioneer: ART STEWART



Formfit
 Let's fall in love
Sale
 May 16 to 25th



It will be love at first sight when you see these underfashions in light, lively Lycra by Formfit. But hurry—don't miss these fabulous once a year savings!
SALE 3.49
 Skippies Panties No. 827
SALE 6.99
 Formfit Bandeau 981—sheer; Lycra undercup and front band releases for lasting shape and freedom of movement. Distinctly embroidered cotton suspender. A 32-36, B & C 32-38. White. Reg. 5.00.
SALE 4.99
 Skippies Long-Leg Pantie 827—of light, firm Lycra powernet with satin elastic Lycra front and back panels. Full 2 1/2" waistband. S-M-L. White. Reg. \$10.00—sale \$4.99.
SALE 6.99
 also available in matching girdle, style 955. Reg. 8.00
SALE 5.99

MRS. RITA WILSON

... personal representative for The Formfit Company, will be in Prince Edward Island to personally assist you with your choice of foundation garments. The dates of her visit to Holman stores in Charlottetown and Summerside are as follows:
 Charlottetown Store May 21st and 22nd
 Summerside Store Today, Sat., May 18th

MAY SALE
 Fine Dinnerware!



Only 11 selling days left — Sale ends May 31

(1) (2) (3) (4) (5)
PAY \$1.00 DOWN
 ... balance on easy monthly payments!

5 English semi-porcelain patterns, with extra serving pieces available from open stock; 56 pieces, comprising 8 each, cups, saucers, butter plates, tea plates, dinner plates, cereals, fruits.

1. "Oxford Petal" yellow, pink, blue; reg. 23.68
18.49

2. "Regal Rose" by Grindley; rose centre spray; reg. 31.10—
23.99

3. "Belle Fiore" gay all-over floral design; reg. 28.15—
21.99

4. "Hampton Court" bright cherry design; reg. 35.00—
27.99

5. "Lotus" dainty gold edge on cream-colored semi-porcelain body; reg. 21.50—
16.99