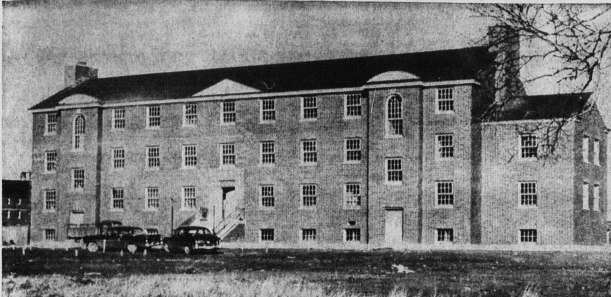
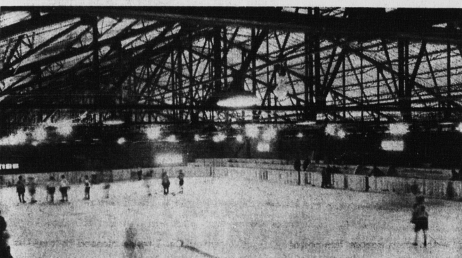


LATEST ADDITION IS THIS \$460,000 LIBRARY OF CONTEMPORARY DESIGN



MARIAN HALL WAS BUILT AS NUM BEE OF CO-EDS ENROLLING TRIPLED



SDU OWNS ONE OF FEW ARTIFICIAL ICE RINKS IN MARITIMES



MSGR. J. A. SULLIVAN
Rector of SDU

SDU expands facilities, courses as student body mushrooms

"Students today are more serious, even anxious, there has been a change in attitude to education," says Rev. O. W. Sharkey, registrar of St. Dunstan's University. "Placement tests given to freshmen each fall indicate that the standards of students entering the university is higher."

In keeping with these brighter prospects in education are the increased facilities, greater range of courses and the larger number of top qualified faculty all included in the progress of St. Dunstan's University over the past 10 years.

This year there are 443 students in university years as compared to 164 ten years ago. The greatest difference is seen in the freshman class which has 198 members this year. In 1932 there were 38 freshmen. There are 22 more students graduating this year than there were 10 years ago.

CO-EDS TRIPLE

The number of co-eds at the University has more than tripled during the past 10 years, with 100 in attendance this year. Of these, 13 will receive their degrees this year. "The number of girls attending cannot but increase," Father Sharkey said, "as Island high schools are graduating two girls to one boy."

A wide range of new courses have been added to the curriculum during the past 10 years. Since 1932 39 new courses have become available.

The latest of these is a three-part program leading to a bachelor of science degree in nursing. The program includes one year of study at St. Dunstan's, two at the Charlottetown Hospital, and one year at Boston College of nursing.

Education courses leading to a teacher's licence were first instituted in 1937. There are now enough education courses available at the University to enable a student to receive his degree as a bachelor of education. The first of these degrees were awarded last summer, and seven students will receive their degrees in May.

PRE-ENGINEERING

A pre-engineering course was instituted in 1935-36. Another new

course is one that combined classical and secretarial studies to lead to a secretarial diploma. Home economics was first offered as an elective for the arts course in 1939. The majority of subjects formerly taught at St. Dunstan's now include a larger number of courses. Spanish classes were also added to the curriculum.

Summer school classes were begun in 1939. Since then, the number of students attending the University during this period has more than doubled. Night courses were also begun during the regular college year, and now have 135 students in attendance.

The number of part time students has grown from virtually nothing to 140 this year. Of full time students, 43 per cent are non-Islanders.

FACULTY GROWS
Faculty members during the 10 year period have grown from 20 to 33. During this time there has been a notable increase of professors with Doctor's degrees, there being seven at the present time.

These are Rev. T. MacLellan, philosophy; Rev. Owen Sharkey, education; Rev. Francis Bolger, history; Rev. Regis Duffy, chemistry; Brendan O'Grady, English; J. Clarence Murphy, sociology and economics, and Rev. Charles Cheverie, biology.

Among other faculty members, there are 12 holding masters' degrees.

Physical facilities at the University since 1932 have undergone a marked expansion. A girls' residence, Marian College, was built in 1939, with space for 60 girls as well as for teaching and domestic staff. A chapel and home economics rooms are included in the structure.

HINK, LIBRARY
A new rink 190 x 85 has been constructed with seats for 1300, an artificial ice plant, dressing rooms and canteen. The latest project, a \$400,000 library, will

be completed in April, and will contain in addition to space for library administration, a lounge, two seminar rooms, a microfilm room, a typewriting room, and washrooms.

The search for faculty is increasing in intensity. Father Sharkey said, and, "dramatic expansion in both college and next three years. The project is in the remote planning stage at present."

Part of this expansion will probably be the erection of a new science building within the expansion in both college and next three years. The project is in the remote planning stage at present.

A building that is efficient to

use, economical to maintain

and beautiful to see is

more often than not

produced as the result of

sound professional advice.

Such competent advice

is offered by the Architect,

the only authority trained in

the combined phases of

planning, design and

construction of buildings.

G. KEITH PICKARD B. ARCH., M.R.A.I.C.
Architect
92 Queen Street — Charlottetown

"Home of the Famous Names You Know"

norma's
LADIES' WEAR

We Point With Pride To
12 YEARS
Of Style Leadership!



Fashion is an intangible value that no woman disregards... important to the point that the best material and nicest fittings might be worthless without the added element of authoritative styling.

But conscious as women are for flattering fashions, Norma's are very much aware of the fact that women also have a sharp sense of value. And here again Norma's score with the lowest prices consistent with quality, ever alert for the best values on the Canadian market.

These are the main reasons for the confidence the women of Charlottetown and districts place in Norma's. This has been the story for the past 12 years... and we will continue to make every effort to maintain your confidence and patronage.

norma's
LADIES' WEAR
Kent St. Charlottetown

OUR POLICY:

TO GIVE FAST AND

COURTEOUS SERVICE

AND TO PAY HIGHEST

PRICES FOR YOUR LIVESTOCK

Progress with
GROWTH!



P Our Pledge of Finest Quality