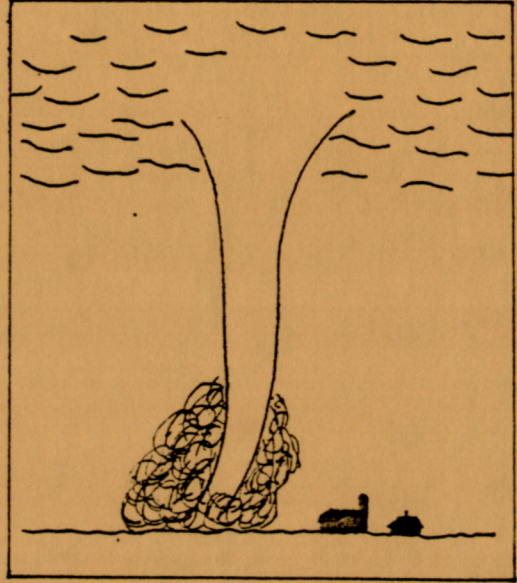


TORNADOES HIT ISLAND. On August 7 an unusual set of atmospheric conditions over the Island created an even more unusual phenomenon for this area, the tornado. Two reports were received, a sand funnel seen over Tracadie Bay and a more conventional type tornado in the Georgetown area.

The tornado is a very localized and particularly destructive form of the cyclone. Like all cyclones it develops along the front of opposing air masses where strong air currents flow in opposite directions at lower cloud levels. If an updraft of warm air arises at some place along this wind front, a spinning whirl is formed around the low pressure area of the updraft, its force drawn from the opposite winds.

As the winds revolve around the low pressure centre, speeds of 450 km per hour or more may be reached. Eventually, a spinning funnel-shaped cloud may descend downward to reach the earth. The path of the destructive funnel varies in width from 5 m to 5000 m but averages about several hundred meters. Sometimes the tornado does not reach the ground, but passes by at heights of 15 m or more. Occasionally the funnel narrows at its base to assume the appearance of a dangling rope. A tornado at sea is called a waterspout, because of the way it sucks water up to create a whirling spray fountain.



The Tornado is one of the most powerful and destructive of storms. It can flatten houses, denude an area of vegetation, and even carry off people and animals. Tornadoes arise most frequently in the western and southern parts of the United States. Luckily for us, they occur only very rarely in the Maritimes, and are normally small and not very destructive.

Answers to Crossword Puzzle

Across

1. mustard
2. Queen Anne's lace
3. nettle
4. samphire
5. sheep sorrel
6. stonecrop
7. lamb's quarters
8. black-eyed Susan
9. evening primrose
10. goldenrod
11. fall dandelion

Down

1. butter-and-eggs
 2. pearly everlasting
 3. plantain
 4. shepherd's purse
 5. tufted vetch
 6. sow thistle
 7. pineapple weed
 8. aster
 9. rabbit-foot clover
 10. sea-lavender
-

