

Event-packed year awaiting visitors

This is a list of some of the major events awaiting visitors to Prince Edward Island this summer.

- JULY**
- 1 Horse Racing Summerside
 - 4 Fisheries Exhibition & Regatta Souris
 - 7 Horse Racing every Sat. Pinetie
 - 11 Regatta Lower Montague
 - 17-21 Lobster Carnival and Livestock Exhibition Summerside
 - 25 Aquatic Day Alberton
 - 25 Fishermen's Regatta N. Rustico
- AUGUST**
- 1 Highland Games Eldon
 - 1 Legion Carnival Tignish
 - 2-18 Scottish Outdoor Concerts at Highland College Cavendish
 - 4 Horse Racing every Sat. Pinetie
 - 13-18 Old Home Week Charlottetown
 - 19 Golden Hawks at Charlottetown Air Show
 - 22 Scottish Concert Eldon
 - 22-23 Prince County Exhibition Alberton
 - 29 Exhibition Crapaud
- SEPTEMBER**
- 5 Kings County Exhibition Souris
 - 12-13 Provincial Plowing Match Dundas

NATION'S BEST ROADS IS P. E. I. GOV'T GOAL

Prince Edward Island is proud of its system of highways which Premier Walter R. Shaw referred to as links that "tap new centres of beauty and attractiveness in a province that is more or less an entire national park in itself."

Premier Shaw went on to say that last year "125 miles of roads were constructed and this year we expect to equal that number; in addition, secondary roads will be under very extensive improvement."

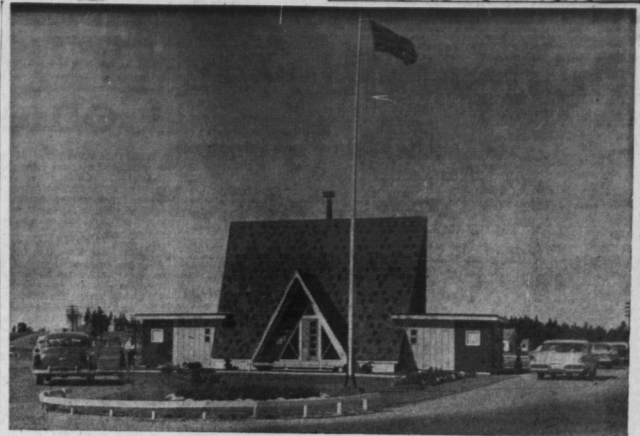
"The Hillsboro Bridge has been completed and now provides a wonderful connecting link across the Hillsboro River."

BEST IN CANADA

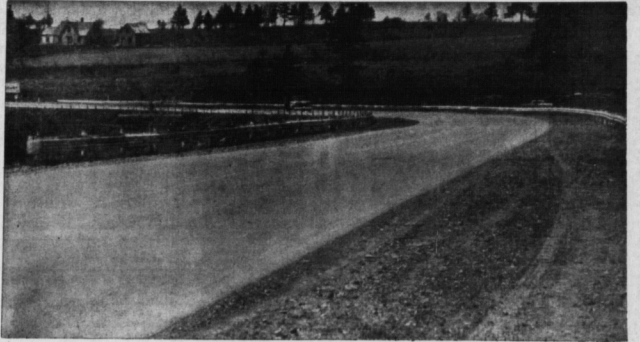
"Roads are vital to our development and I expect to see very shortly the best road system in Canada established in this province."

Total expenditure planned for provincial highways this year is \$7,581,280, almost the total revenue from the province's tourist industry. A total of \$5,967,040 is marked as capital expenditure for highway construction, bridges and the continuation of the Roads to Resources program.

On his recent visit to Charlottetown, Prime Minister Diefenbaker referred to the Roads to Resources program in which this province receives \$7,500,000. "Premier Shaw and I" he said, "are building together some 400 miles of new roads which will have tremendous benefit on the tourist industry and provide Islanders with greater opportunities for expansion."



ISLAND BUREAU AT AULAC, N.B., WILL SUPPLY DIRECTIONS, INFORMATION



ISLAND HAS 'MOST PAVED ROADS PER CAPITA', NOW WANTS BEST, ALSO



Floats, bands, clowns highlight cup parade

A bonus for out-of-province visitors to Prince Edward Island during Old Home Week Aug. 13-18 will be the famous Gold Cup and Saucer Parade that will be staged in Charlottetown on the morning of the 15th.

Started in a small way last year in connection with The Evening Patriot's Gold Cup and Saucer Free-for-all harness race, the parade proved to be such an outstanding success that sponsors were encouraged to broaden it and make it more colorful than ever before.

Planning for this year's parade has been underway since January. Committees made up of some of Charlottetown's leading citizens have been spearheading the drive for entries and all present all indications are that the parade will match and surpass anything ever before seen in Charlottetown.

BANDS, FLOATS, CLOWNS
The parade will have everything that makes everyone "like a parade". Bands, majorettes, floats, clowns, sailors, soldiers, will add color and excitement and thousands of out-of-town and out-of-province visitors are expected to flock to the city to see it.

It is expected that 30 floats and probably as many as 10 bands, some from the mainland, will make up a large segment of the mammoth parade. Already numerous business firms, service clubs, and others have entered floats and the work of building them is underway.

But the parade is only part of the celebrations scheduled for the 17th. In the evening, The Evening Patriot will stage its celebrated Gold Cup and Saucer Free-for-all with the fastest horses in the Maritime Provinces taking part.

A Gold Cup and Saucer race "queen" will be crowned. She will be picked from the set of Gold Cup and Saucer Girls who made such a hit last year and appeared in Toronto in the first Grey Cup Parade last year.

The Patriot girls will also appear in the morning parade carried in open convertibles and all dressed up in colorful riding silks.

All the pomp and color of the Kentucky Derby will be in evidence when the race is over and the winning horse has been decided. The winner will be paraded to the winner's circle where trophies and flowers will be presented by dignitaries. The race will be attended by leading sports writers from all the Maritime Provinces and other parts of Canada and the U.S.

GOOD ARTIST
CHESTERFIELD, E. J. a local artist - "Glammy Picasso" has put on her first exhibition. For five years 70-year-old Mrs. Margaret Davies has studied abstract painting at a Derbyshire art college. One of her best-known works is "Old Iron," her impression of the inside of a garbage can.

LOG CABIN LODGE
Georgetown
Ever live in a log cabin? For a vacation with a pioneer setting, plan your stay this summer at Log Cabin Lodge. 11 miles from Georgetown near the beautiful Cardigan River. The resort with its many unique features you'll be amazed that such a spot exists on P. E. I.

Here you will find real log cabins with furnishings the pioneers dreamed about but never saw. Enjoy lake boating, trout fishing, swimming, a clubhouse on the beach. We cannot guarantee any camping or viewing as our tentfields did not see to promise a restful and enjoyable vacation.

You got hay fever? well, come to P. E. I.

Prince Edward Island has been certified as a near-perfect haven for hay fever sufferers. Hay fever, as anyone who has it can testify, is a real malady. It can cause the victim to be quite uncomfortable, and, in many cases, quite ill. The best cure is to get away to a secluded spot where there is no pollen in sufficient quantities to bring on the disease.

The greatest majority of hay fever is caused by ragweed, a plant that grows wild in both city and country. Like other allergens, hay fever will disappear when the object causing it is not present or has been removed.

The provincial department of agriculture conducts an extensive survey of Prince Edward Island. This is accompanied by an elimination program to clear up any traces of the weed which are found. The results of the pollen count shows the island to be almost free from ragweed in the resort and other areas.

There is a sure guide to the density or otherwise of a ragweed area insofar as ragweed is concerned. International authorities on the subject have worked out a safe rule which is as follows: The index figure for each county is based on three factors which directly affect individual pollen exposure: length of season, maximum aerial concentration of pollen and total pollen catch on test slides throughout the season. Any city or community having an index above 10 is not recommended; between 5 and 10 is fairly good; below 5 is good; below one is excellent.

The above air index was fixed only after an intensive study of the situation over a period of two months during which a daily pollen count was made at strategic points throughout the province. When the pollen count was completed, it was shown that Prince Edward Island "is practically free from ragweed and is therefore a near perfect haven for hay fever patients."

ISLAND RAGWEED AIR INDEX

CITY	Pollen per cu. ft. in July	Annual index	Aug. to Sept.	Maximum count	Hay fever days	Hay fever days (approx.)	Recommended altitude
CHARLOTTETOWN	90	18	8/14	0	0.4		
SUMMERSIDE	43	11	9/7	0	0.4		
O'LEARY	14	4	9/4	4	0.2		
TIGNISH	86	18	9/3	0	0.3		
CAVENDISH	32	14	8/31	0	0.5		
SOUBIS	11	7	9/5	0	0.1		
MONTAGUE	47	11	9/9	0	0.2		
STANHOPE	91	18	9/4	0	0.4		

up any traces of the weed which are found. The results of the pollen count shows the island to be almost free from ragweed in the resort and other areas.

There is a sure guide to the density or otherwise of a ragweed area insofar as ragweed is concerned. International authorities on the subject have worked out a safe rule which is as follows: The index figure for each county is based on three factors which directly affect individual pollen exposure: length of season, maximum aerial concentration of pollen and total pollen catch on test slides throughout the season. Any city or community having an index above 10 is not recommended; between 5 and 10 is fairly good; below 5 is good; below one is excellent.

The above air index was fixed only after an intensive study of the situation over a period of two months during which a daily pollen count was made at strategic points throughout the province. When the pollen count was completed, it was shown that Prince Edward Island "is practically free from ragweed and is therefore a near perfect haven for hay fever patients."

ISLAND RAGWEED AIR INDEX

CITY	Pollen per cu. ft. in July	Annual index	Aug. to Sept.	Maximum count	Hay fever days	Hay fever days (approx.)	Recommended altitude
CHARLOTTETOWN	90	18	8/14	0	0.4		
SUMMERSIDE	43	11	9/7	0	0.4		
O'LEARY	14	4	9/4	4	0.2		
TIGNISH	86	18	9/3	0	0.3		
CAVENDISH	32	14	8/31	0	0.5		
SOUBIS	11	7	9/5	0	0.1		
MONTAGUE	47	11	9/9	0	0.2		
STANHOPE	91	18	9/4	0	0.4		

The above air index was fixed only after an intensive study of the situation over a period of two months during which a daily pollen count was made at strategic points throughout the province. When the pollen count was completed, it was shown that Prince Edward Island "is practically free from ragweed and is therefore a near perfect haven for hay fever patients."

ISLAND RAGWEED AIR INDEX

CITY	Pollen per cu. ft. in July	Annual index	Aug. to Sept.	Maximum count	Hay fever days	Hay fever days (approx.)	Recommended altitude
CHARLOTTETOWN	90	18	8/14	0	0.4		
SUMMERSIDE	43	11	9/7	0	0.4		
O'LEARY	14	4	9/4	4	0.2		
TIGNISH	86	18	9/3	0	0.3		
CAVENDISH	32	14	8/31	0	0.5		
SOUBIS	11	7	9/5	0	0.1		
MONTAGUE	47	11	9/9	0	0.2		
STANHOPE	91	18	9/4	0	0.4		

The above air index was fixed only after an intensive study of the situation over a period of two months during which a daily pollen count was made at strategic points throughout the province. When the pollen count was completed, it was shown that Prince Edward Island "is practically free from ragweed and is therefore a near perfect haven for hay fever patients."

When writing for accommodation

PLEASE MENTION THE

GUARDIAN-PATRIOT TOURIST EDITION

NOTICE

MARY'S TOURIST and OVERNIGHT GUESTS

School Street Phone 45 Montague For Reservations

BEST THINGS ARE WELL PLANNED...

That's simply our way of saying "come visit with us!" Here on Canada's "Sunshine Island", rich in natural beauty, sandy coast line, good trout streams, fine accommodations and good paved roads you'll spend a holiday long to be remembered. Please do come and see us! We'd be most happy to meet you and your family.



Fruit and Vegetables our Specialty

Two Modern Food Markets

At Your Disposal....

Cudmore Grocery | **P. J.'S LTD.**

C.O.D. ORDERS ACCEPTED | FREE DELIVERY

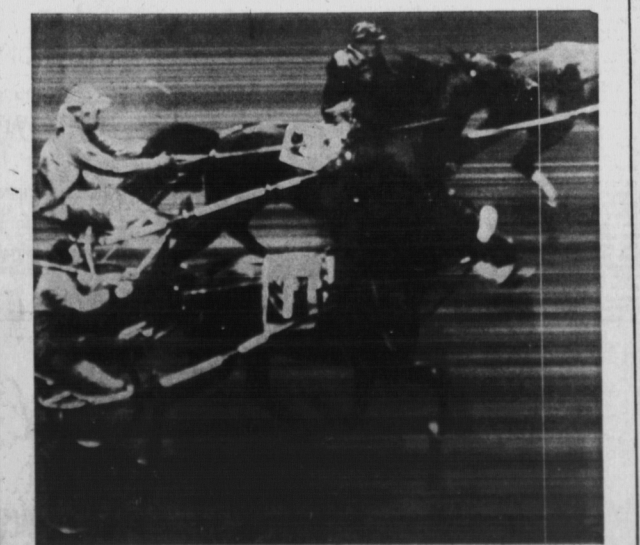
1 Elm Avenue | Dial 4-3813 | Corner Kent & Prince Sts. 4-3585-6

Don't Miss The Island's "TRIPLE CROWN" Of Racing

Three great Maritime Circuit Free-For-All Races will be sponsored again this year by The Evening Patriot at the Charlottetown Driving Park. We invite tourists to enjoy the Sport of Kings with us. Come... bring your friends... See you at "The Races".

- THE INAUGURAL — FRIDAY, JULY 7
- THE INVITATIONAL — MONDAY, AUGUST 13
- THE GOLD CUP & SAUCER — FRIDAY, AUG. 17

All Patriot races in 1962 will be based on best summary of 2 dashes. If summaries are equal then horse making the fastest time in the event will be declared the winner of The Patriot award.



MARITIME CIRCUIT FREE-FOR-ALL SPONSORED BY

THE EVENING PATRIOT

ALL RACES TO BE RUN AT THE CHARLOTTETOWN DRIVING PARK

"Read the Entries and Selections Every Race Day in The PATRIOT"