



Christmas

SHOPPING PARTY

THURSDAY · FRIDAY · SATURDAY

Shop Early For This Terrific

Sale Of DRESSES



Here's an opportunity to choose several smart dresses at a saving! There are taffetas, crepes and cotton tweeds in the assortment. Colors include black, aqua, gray and wine. The sizes are 12 to 20 with a few half sizes in the lot. SHOPPING PARTY VALUE—

Regular to 6.98

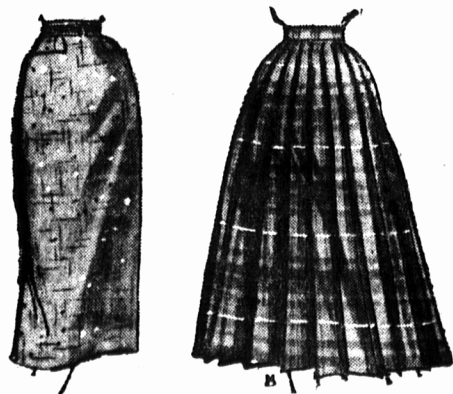
4.

HOLMAN'S LADIES' WEAR, S'side—LADIES' SHOP, Ch'town

Smart Styles In SKIRTS

For Yourself or Gifting!

Flatteringly straight and slim or bursting with gay pleats, the fabrics include plaid wool flannels, wool tweeds and fine worsteds in an array of popular colors. Sizes are from 18 to 18.



Regular 10.98
SHOPPING PARTY SPECIAL —

6.

HOLMAN'S LADIES' WEAR, S'side—LADIES' SHOP, Ch'town

Clearance! SLIPS

Strictly tailored or frothy with rich lace, the material is rayon crepe in white only. Styled for perfect fit in sizes 32 to 36. Regular 2.49 — SHOPPING PARTY SPECIAL—

1.39

GOWNS HALF PRICE

Fashioned of *Celanese or rayon crepe in white or soft pastel shades. The styles are tailored or fancifully lace trimmed. Sizes 32 to 40. Regular \$2.98—SHOPPING PARTY SPECIAL—

1.49

HOLMAN'S BOTH STORES LINGERIE



Feature Value!

HANDBAGS

Your choice of an assortment of colors in plastic calf, rich velvet or serviceable bengaline. There are a number of shapes and sizes including clutch, pouch and box. Regular 2.98. SHOPPING PARTY SPECIAL—

1.99

HOLMAN'S BOTH STORES ACCESSORIES



Save! Girls' All Wool

CARDIGANS

Classic style in pure wool, knit in a soft basket stitch. Colors are red, wine, green, blue, pink or navy. Sizes 8 to 14, regular 3.98—SHOPPING PARTY SPECIAL—

2.99

HOLMAN'S YOUTH CENTRE, S'side—CHILDREN'S WEAR, Ch'town

Little Boys' Warm Plaid

JACKETS

"Skippy" Brand of all wool in bright, warm plaid patterns. Zipper closing with storm flap at neck, knit cuffs and waistband, and two slash pockets. Sizes 3 to 7, regular 6.98—SHOPPING PARTY SPECIAL—

5.88

HOLMAN'S YOUTH CENTRE, S'side—CHILDREN'S WEAR, Ch'town



Girls' Wool Plaid JUMPERS

Plaid wool flannel styled by "Junior Girl" with pleated skirt and vest type top. Warm and smartly girlish. This is a Manhattan garment in sizes 8 to 12.—SHOPPING PARTY SPECIAL—

Regular 7.98

SHOPPING PARTY SPECIAL —

6.

HOLMAN'S YOUTH CENTRE, S'side—CHILDREN'S WEAR, Ch'town

Childre's Cotton & Wool

RIBBED HOSE

Substandard quality in cotton-wool blend with nylon reinforced heels and toes. Fawn shade in popular 1 and 1 rib, sizes 6 to 9, regular 79 and 98 cents pair—SHOPPING PARTY SPECIAL pr.

49c

HOLMAN'S YOUTH CENTRE, S'side—CHILDREN'S WEAR, Ch'town

Shopping Party Special!

Men's Good Fitting

LOAFERS

Smooth, sturdy brown kip leather with full Neolite soles and heel lifts. Moccasin sewn vamp with bound edges. Unlined and with fitted heels in sizes and half sizes 6 to 11, regular 9.98 pair—SHOPPING PARTY SPECIAL—

8.79



Women's Cosy

FELT SLIPPERS

Two toned in blue and wine felt. High in-step, moccasin vamp with pom-pom trim, split suede soles and padded heels in sizes 4 to 9, regular 1.28—SHOPPING PARTY SPECIAL pair—

98c



Misses' and Children's

Leather FOOTWEAR

Black, brown, cherrytone or red kip leather with Neolite composition soles and rubber heels. In a variety of styles. Sizes 8 to 10 1/2 and 11 to 3, regular to 4.98—SHOPPING PARTY SPECIAL—

2.39



HOLMAN'S Footwear, Summerside