

# Many angles to consider before purchasing china

By JEAN SHARP  
 TORONTO (CP)—When shopping for a set of china, there are a number of questions you can ask yourself about the pattern.

Is the design attractive and in good taste? How will it look in different settings, with different types of flatware and glassware? If the design is a good one it should look bright in almost any setting.

If you're a bride, how will the pattern look in 10 years or so? Remember that your tastes are likely to change.

G. W. Churton, vice-president of Doulton and Company (Canada) Ltd., says china firms have found that young brides today buy mostly simple, light designs. Older customers choose more elaborate, formal designs.

When selecting your pattern consider the whole set. Mr. Churton says How does it look on the cups, the teapot, a platter?

Look at the cream jug, the gravy boat. Handle them. They should be functional as well as beautiful. China is designed today to be used, not to be put in a china cabinet. A footed piece should have a solid base

so it won't tip easily. Consider the capacity of the coffee pot. Will it hold enough?

Price and the intended use should determine what type of dishes to buy — "people call everything china but of course not all dishes are china."

"Semi-porcelain made by a fine-tableware manufacturer is a good body in itself. It lends itself to underglaze decoration, the most permanent way of sealing in decoration, but its colors will not be as bright as colors on china."

"It is opaque compared with china and it is porous under the glaze. Where there is no glaze, semi-porcelain will admit moisture and will discolor. It has a softer body and is therefore less chip-resistant than china."

"Fine bone china has about 50 per cent calcine animal bone. Any true china is translucent. Bone china has the clearest translucency and a brighter whiteness than others."

"A test of good china is to look at a light through it to be sure there is no cloudiness in the body. Even the mixing of the clay has an effect on the strength of bone china."

There is a great misconception about bone china. People think it's fragile, probably because they've paid a lot of money for it. Bone china is the most durable form of body known in clay today.

"It also has the greatest resistance to temperature change, although we don't recommend putting it in a warming oven and taking it straight on to a cold surface."

"Between bone china and semi-porcelain is translucent china. It contains no bone; its translucency is achieved by using feldspar."

**SHOULD BE RINSED**

Mr. Churton says most good china will withstand normal household use but he offers a few suggestions for its care.

"Food acids and alkalis in detergents and soaps will attack the colors on china if you let dishes stand unrinsed. Rinse them off after use and never allow them to dry with detergent or soap solution on them."

"You should never exceed the manufacturer's recommendation in the quantity of soap or detergent you use. The temperature of washing water doesn't usually matter but if you have excess detergent with water over 400 degrees—this is where trouble comes with dishwashers—the combination is definitely harmful."

Never stack china without a protective layer between pieces or wash it while wearing a diamond ring. The surface of china is hard enough to resist scratching by utensils but one piece of china can scratch another and so can a diamond.

Mr. Churton says cups should not be stacked if possible. Stacking may cause impact fractures, especially at the handle where there is stress.

## Here Comes The Groom in a GLENGUARD SUIT by Hyde Park From Dow's Men's & Boys' Wear



DOWS suggest before you pick your wedding suit, be sure and see their wide selection of famous Hyde Park Suits. These suits are all beautifully tailored and will make you stand out on that important day.



Great George Street Charlottetown

## Woolworth's Bakery Counter Features



**Woolworth's**  
 Phone 894-8571  
 Queen Street Charlottetown

## A TIP FOR NEWLYWEDS!

Whatever you buy and whenever you buy... always insist on the best quality available,—when you buy oil products... always insist on ESSO.

Call your ESSO dealer in MONTAGUE for fast, efficient service...

**A. A. (Joey) FRASER**  
 MONTAGUE P. E. I.

## The WISE BRIDE Knows



When a young couple is married they want to start off on the right track. One of the ways to do this is to make all Fuel Oil purchases from Charlottetown Petroleum. WHY? Because TEXACO FUEL CHIEF burns cleaner and therefore does not clog flues, meaning more fuel economy for the future homemaker. Just drop in on us any time, we will be glad to help arrange your fuel budget.

**Charlottetown Petroleum Products**  
 203 Great George Street Ph: 4-7312 & 4-7811

## HELEN'S DRESS SHOP

feature exciting fashions for 'GOING AWAY'

We at HELEN'S are anxiously waiting to show you our smart line of

- COATS
  - SUITS
  - DRESSES
  - SKIRTS
  - BLOUSES
- HELEN'S DRESS SHOP**  
 54 Grafton Street



Mrs. Peter Classon, the former Joyce Key, Summerside.

## Planning music for ceremonies

Too many brides take their wedding music for granted. That's the complaint of band leader Tony Cabot whose orchestra has played for numerous society parties and weddings.

First, Cabot says too many brides don't bother selecting their music at all. They assume the organ will play "Here Comes The Bride" as they walk down the aisle, and they make no plans for the type of music for the reception.

Cabot believes that if the wedding ceremony does not take place in a church, a string quartet can play the traditional music.

He says that in a hotel, a hall or private home, the organ is out of place.

For the reception line right after the ceremony, Cabot suggests what he calls "ice cream music," light classical pieces which provide an attractive background without intruding. Remember, he says, the bride should be the star on her wedding day.

The bride should shine also at the reception, and Cabot warns prospective brides to find out exactly what they're getting when they plan their receptions. Is the orchestra included in the price? Will the bride have any choice of what type of music she wants, or who she wants, playing it? In any case, the bride should confer with the orchestra leader before the reception.

Let him know what type of music is preferred. Is the music for dancing or for background?



- All household appliances
- Customized and made-to-measure draperies
- Roll and room size carpeting in stock
- English Bone China
- Semi-porcelain dinnerware
- Flatware: Sterling, Plate, Stainless Steel
- English Rock Crystal

**FREE Interior Decorating Consultant Service at your home.**

**BRACE MCKAY LTD.**  
 SUMMER STREET

with most of the guests want to do the frug and watusi, or do they prefer to stick to tried and true dances like the fox trot.

Finally, Cabot has a word of advise for orchestra leaders themselves. He says the band is not entertainment, but accompaniment. He is against bands who should be the centre of attention.



**It's the taste that counts**

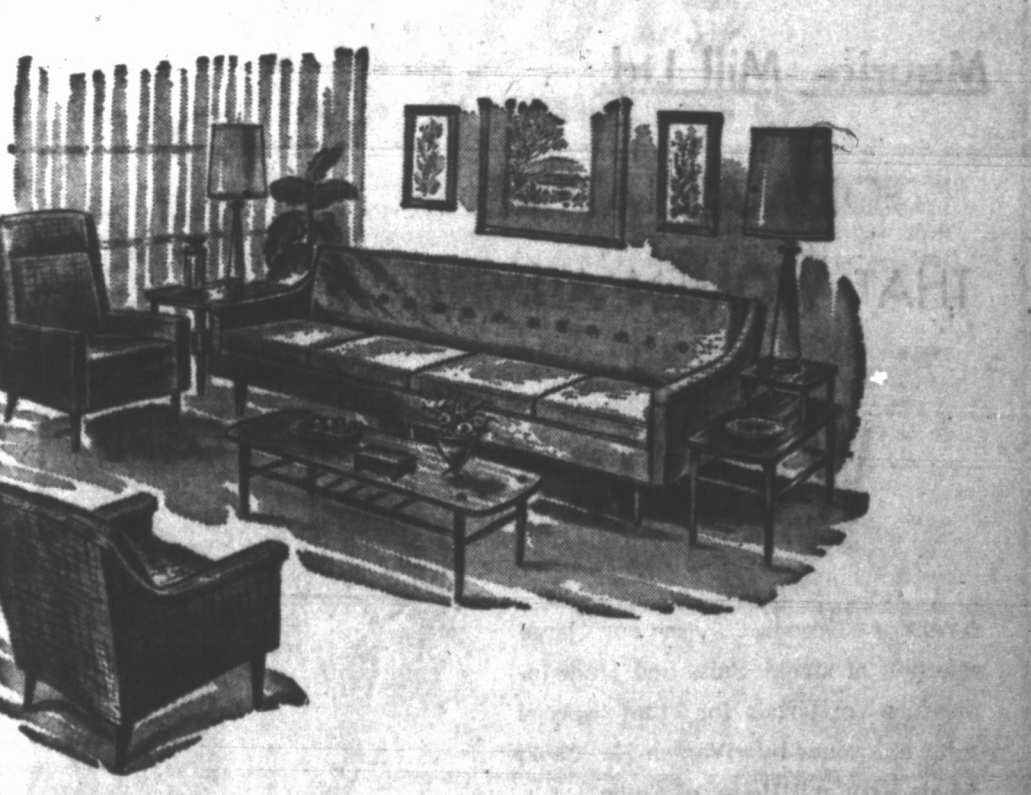
Kids don't care very much about vitamins, nutrition and the like... the thing that counts for them is taste... and dairy foods have it! Tangey cheeses and spreads, refreshing milk, butter, sour cream have the satisfying taste kids and adults love!

Serve the **TASTE TREAT THAT CAN'T BE BEAT**

**P.E.I. Dairymen's Association**  
 and  
**P.E.I. FLUID MILK ASSOCIATION**

## BRIDES... WITH GOOD TASTE

come to us for fine furniture and appliances



Does your home reflect an atmosphere of quality and casual comfort? Does it provide beauty and convenience? Is it an eloquent expression of your own good taste? You'll find it a simple matter to furnish your own home in your own way today... for here we have a wealth of furniture and appliance styles available... so many attractive pieces that the possibilities of bringing beauty into your home are unlimited. Choose from fine brand names in quality furniture, and famous appliance names. Women with good taste know they can depend on us to assist them in carrying out their own ideas. There are large selections from which to choose... and trained experts to help you every step of the way.

**BRACE MCKAY LTD.**  
 SUMMERSIDE