

BEDTIME STORIES

Paddy Discovers Neighbors

My friends you trust. It is the new law you cannot know if they be true. —Old Mother Nature.

It was very still over in the Green Forest. All the Merry Little Breezes had gone to sleep for the night. It was not yet quite dark. It is what is called bewick and between, which means that it was neither dark nor really light. It was the hour that many of the little folk of the Green Forest love best. Paddy the Beaver is one of these.

Paddy was just floating in his pond over near the roof of his house which you know is built in the water. Over on the farther shore he saw Lightfoot Deer come down to the edge of the water and drink. He did this every evening at this hour. Paddy and Lightfoot have been friends for a long, long time.

Mrs. Paddy's head suddenly joggled out of water right beside Paddy. She had come out from the house under water. Now she idly floated just as Paddy was doing. At this time of year there was no work to be done at once and they were taking things easy. A faint sound caused Paddy to look up

time. Now as he looked up Paddy thought he saw a face in the doorway, but it had disappeared. Paddy blinked. Could it be that his eyes had fooled him? He stared very long and hard, but the entrance to that old home of Drummer's was vacant.

"Did you see something?" asked Mrs. Paddy, who had noticed how Paddy was staring up in that tree.

"I thought I did, but I guess

... find woman's BODY ... TOURS, France (AP) — Mrs. Nelle Dean, 35, wife of a U.S. Army sergeant stationed at Chinon, was found strangled to death in a forest Sunday. On her body several designs had been cut with a knife. An autopsy showed no evidence of rape. Army sources said Dean and his wife had been drinking in a Chinon cafe Saturday night. Dean went home, but his wife stayed.

"Do you see what I see now?" asked Paddy in a low voice. Very little did it make just the smallest ripple on the water.

"Yes," said she. "I see we have new neighbors. I wonder who they are and where they came from and if they are going to stay."

"I too wonder who they are. I've never seen them before. I wish they would come out so that we could see just what they look like," said Paddy. But the new neighbors seemed very bashful and were satisfied just to look out, showing only their faces.

CONTRACT BRIDGE

By B. JAV BECKER

South dealer. East-West vulnerable.

NORTH
 ♠ Q 10
 ♥ 8 6
 ♦ 8 5 4 2
 ♣ A J 9 8 3

WEST
 ♠ J 7 6 5 3 2
 ♥ 9 3
 ♦ K J 7
 ♣ 6 4

EAST
 ♠ A K 9 4
 ♥ J 10 7 5
 ♦ 10 3
 ♣ 10 7 1

SOUTH
 ♠ A K Q 4 2
 ♥ A Q 9 6
 ♦ K Q 5

The bidding:
 South West North East
 1♥ Pass 1NT Pass
 3♥ 4♦ Pass 4♦ Pass

tract when South suggested it. East won the opening spade lead with the king and continued with the ace. South ruffed and drew three rounds of trumps. When the hearts failed to divide 3-3 declarer tried to run the club suit. East ruffed the fourth round and South also lost two diamonds to go down one.

South's method of play might have succeeded, of course. The hearts could have broken 3-3, as South hoped. But it strikes us as he was putting all his eggs in one basket, and not too sturdy a one at that.

Suits break 3-3 only about a third of the time. The 4-2 break occurs about half the time. There was a line of play to make the hand which would succeed whether the heart division was 3-3 or 4-2.

True, the winning play is hard to see and somewhat unusual. But this does not lessen the validity of a play which is demonstrably correct.

After ruffing the second spade lead with the deuce South's next play should be the four of hearts. This lead has an overpowering effect. It clears one round of trumps without losing control of the suit, while at the same time it permits dummy's remaining trump to take charge of a spade return.

It does not matter which opponent wins the trick or what is returned. Declarer will win four hearts, five clubs and a diamond.



"Did you see something?" asked Mrs. Paddy.

Paddy stopped short. He didn't finish what he had started to say. Very pale faced, dark eyes had appeared in the doorway in that old tree. Even as Paddy looked the face disappeared and another took its place.



WOOD ISLAND CARIBOU FERRY SERVICE

JUNE 15 TO SEPT. 22
 Daily from each terminal:
 7 a.m., 9 a.m., 11 a.m.,
 1 p.m., 3 p.m., 5 p.m.
 STANDARD TIME

For daily report dial CFCY on first weather broadcast. Cross early and avoid delay. Reservations Limited. For particulars contact: NORTHUMBERLAND FERRIES LIMITED Charlottetown, P. E. Island

MOVIE FIND

They searched three continents to find the right girl to play an Eastern dancer in The Quiet American—and they found her. She is Georgia Moll, a 19-year-old beauty from Rome. Read about this coming movie and TV star. Get The Standard — on sale now, complete with magazine, 12-page novel and 20 pages of comics. Only ten cents.

The Standard ON SALE NOW



CFCY TV CHANNEL 13 THURSDAY

4:00 p.m.—Afternoon Musicale
 5:00 p.m.—The Ed and Ross Show
 5:30 p.m.—The Lone Ranger
 6:00 p.m.—Western Theatre
 7:00 p.m.—CFCY TV News
 7:10 p.m.—Weather
 7:15 p.m.—CBC TV News
 7:30 p.m.—Sports Weekly with Loman McAulay
 8:00 p.m.—Meet McGraw
 8:30 p.m.—Climax
 9:30 p.m.—Summertime '57
 10:00 p.m.—CFCY TV News and Weather
 10:05 p.m.—Movietime
 11:30 p.m.—Let's Sing
 12:00 a.m.—News Magazine

CKCW — Moncton Channel 2 Television Programme Schedule THURSDAY

4:30 p.m.—F. M. Concert Hall
 4:55 p.m.—News, Sports, Weather
 5:00 p.m.—The Ed and Ross Show
 5:30 p.m.—The Lone Ranger
 6:00 p.m.—Western Theatre
 6:30 p.m.—Early Evening TV News
 6:45 p.m.—Weather
 6:50 p.m.—Sports
 7:00 p.m.—Annie Oakley
 7:30 p.m.—Topper
 8:00 p.m.—Meet Mr. McGraw
 8:30 p.m.—Climax
 9:30 p.m.—Summertime '57
 10:00 p.m.—Escape To Danger
 10:30 p.m.—64,000 Questions
 11:00 p.m.—CBC TV News
 11:10 p.m.—CKCW TV News and Weather
 11:15 p.m.—Billboard
 11:30 p.m.—"Man Ball"

CUDMORE'S WEEK-END SPECIALS

- Pickling Onions 6 lbs. 29c
 - Cooking Apples 3 lbs. 25c
 - Large Cucumbers 4 for 29c
 - Peaches \$1.25 basket
 - Plums 99c basket
- 5 LB. BAG 49c

- Rose Brand 12 oz. jar 2 for Marmalade 45c
- Shredded Wheat 2 pkgs. 39c
- Aylmer Tomato Juice 20 oz. tin 2 for 35c
- Rinso Surf Breeze large size pkg. 38c
- 25 LB. BAG \$1.65
- Fig Bar 1 lb. bag 33c
- Red Glace Cherries 1/2 lb. pkg. 35c
- Heinz Vinegar gal. jar 98c
- Mixed Fruits 1/2 lb. pkg. 23c
- Lifebuoy Soap 3 bars 25c
- Shelled Walnuts 1/2 lb. pkg. 35c
- Broken Pekoe Tea lb. 75c
- McCready's Chow Chow or Pickles 24 oz. bottle 38c

PLANT SPECIALS

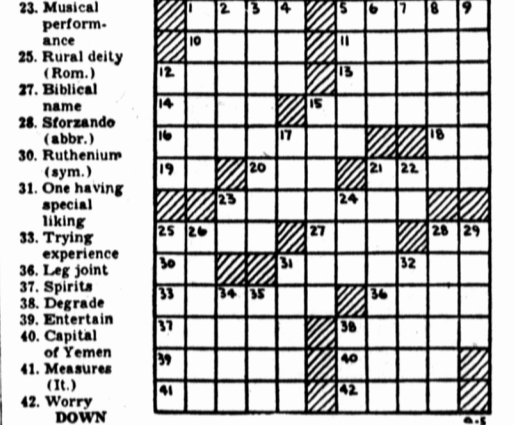
Large Plants—large variety of colors
 CUT FLOWERS

Coleus, 39c each, 3 for \$1.00
 Snapdragons, large bunch .. 35c
 Gladioli blooms 10c each

Dial 3813 Free Delivery 1
 COD orders accepted ELM AVE

DAILY CROSSWORD

- ACROSS**
1. Weary
 2. Covered with vines
 3. A kin
 4. Bitter vetch
 5. Always
 6. Head
 7. Measure of land
 8. European ermine (poss.)
 9. A circus animal
 10. Game of chance
 11. Eaker
 12. Noteworthy
 13. Alder tree (Scot.)
 14. On the ocean
 15. Mineral vein
 16. Official routine
 17. Telurium (sym.)
 18. Exker
 19. Anger
 20. Occupic
 21. Musical performance
 22. Rural deity (Rom.)
 23. Biblical name
 24. Sforzando (abbr.)
 25. Ruthenium (sym.)
 26. One having special ability
 27. Trying experience
 28. Leg joint
 29. Spirits
 30. Degrade
 31. Entertain
 32. Capital of Yemen
 33. Measures (U.S.)
 34. Worry
 35. Annoys



DAILY CRYPTOQUOTE—Here's how to work it: **AXYDLBAAXR** is **LONG FELLOW**

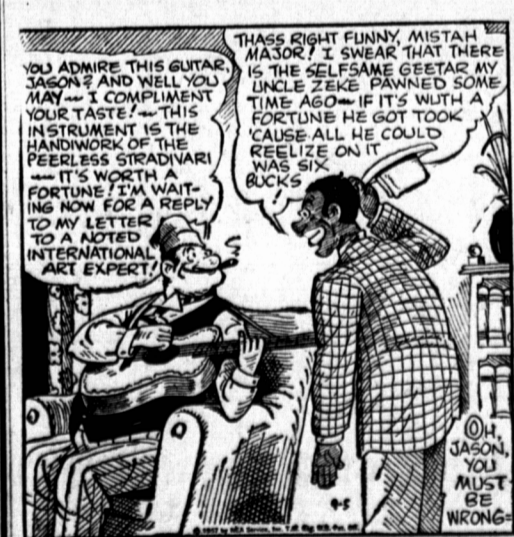
One letter simply stands for another. In this sample A is used for the three L's, X for the two O's, etc. Single letters, apostrophes, the length and formation of the words are all hints. Each day the code letters are different.

A Cryptogram Quotation
CZILZLF AZ CQH FZLOC. MZLY QUBR TYBRA CZAUH-QZLUPR.

Yesterday's Cryptogram: **GOD'S IN HIS HEAVEN—ALL'S RIGHT WITH THE WORLD!** — BROWNING.

Distributed by King Features Syndicate

OUR BOARDING HOUSE MAJOR HOOPLE



OUT OUR WAY BY J. R. WILLIAMS

