

## Soil Conservation And Related Problems

Excerpts from a Report by the Prince Edward Island Branch of the Agricultural Institute of Canada.

About 790,000 acres, or 86 per cent of the total area of Prince Edward Island is potentially well suited for the production of agricultural crops commonly grown in this region. The remainder consists of land marginal or sub-marginal for agriculture or is taken up by roads, ponds, streams, etc.

The Charlottetown soils, occupying the largest acreage, extend in an almost continuous block from Summerside in a north-west to south-east direction to the south-central region along the Queens-Kings County border line. There are smaller areas in Prince, extending from Miscouche to Tyne Valley, and also in the vicinity of Rosebank, Alma and Greenmount. In Kings County the largest areas are in Morell-St. Peters sector, in the Monticello sector and around Red Point, Souris, Rollo Bay and New Perth. The surface soils in this series vary from fine to very sandy loam and are susceptible to severe erosion where the grade is 5 per cent or over. This series comprises one of the most important agricultural soils in the Province.

The Alberton series is the second most extensive. These soils occur mainly in the eastern part of the island, particularly in the western sections of Kings County, and extend into Queens County. Another moderately large area is situated in the south-western part of Queens County. In many respects they are similar to the Charlottetown soils, but contain a larger percentage of coarse sand. Though all are subject to erosion, about 15 per cent, chiefly in the south-western part of Queens County, are reduced in agricultural value by the risk of very severe erosion.

### Culloden Series

The Culloden series is the third most extensive. These soils are located chiefly in south-western Kings County and in south-eastern Queens. The dominant texture of the surface soil is sandy loam, but the subsoils are loose, porous and frequently gravelly. The water holding capacity is low and fertility is difficult to maintain. A considerable area was once cleared and cultivated but has been allowed to revert to woodland. Much of the land that is cleared at present has been abandoned or neglected and is now covered by a scanty growth of brown top, wild oat grass and poverty grass. As a class, these soils are particularly susceptible to erosion. However, some are well suited for potatoes if liberal amounts of fertilizer are used and a satisfactory supply of organic matter is provided.

The Armadale series, the fourth most extensive, is located chiefly in Prince and Kings Counties. The topography is nearly level to depression, subsoil drainage is poor and, in most localities, natural outlets are lacking. There are some areas practically all covered by woods consisting of spruce, tamarack, alder, swamp maple and, in Prince County, cedar. Drainage is the fundamental problem; but, even when drained, some are only marginal to submarginal.

### Western Prince

The O'Leary series ranks fifth in extent. These soils are located in the western part of Prince County. They vary from heavy fine sandy loam to clay loam, the latter predominating, and are classed among the better agricultural soils of the Province. Owing to drainage conditions and texture, their suitability for all farm crops is more limited than that of the Charlottetown series. The Egmont series, the sixth most extensive, occurs chiefly in the western part of Prince County, the largest areas being in the vicinity of Enmore, Mt. Pleasant and Egmont Bay. The surface soil varies from dark grey to black clay loam. The topography is flat and poor drainage renders these soils marginal for agriculture. Its value could be increased where the depth of soil and access to outlets would make drainage economically possible.

The Dunstaffnage, Kildare Hallburton, Pownal and Queens series are minor soil types.

## ITCHY PILES

In 5 minutes CHINAROID starts giving wonderful relief for sore, itching, burning piles. Works while you sleep to help heal and shrink sore, irritated tissues. Thus it relieves nervous irritation and lets you sleep and work in comfort. Don't waste precious time and suffer needlessly. Ask your druggist for CHINAROID today under satisfaction or money back trial offer.

## CITY AND DISTRICT

ROY'S TAXI—Dial 6560—6569.

COOK'S for Perfect Pictures.

CRASWELL for Better Photographs.

"YOUR DOLLAR BUYS MORE" at the HUGHES DRUG STORE.

VISIT HI-STYLE MILLINERY, 163½ Great George Street. Every style Hi-style.

"WE TREAT THE SICK WELL." Giggey's Pharmacy, next Stewart's Bakery.

MEN! Choose your Easter Hat today. See the new Adam Hats at 495, Henderson & Cudmore.

GOOD FRIDAY SERVICE 3-4 p.m. Kirk of St. James. Charlottetown Ministerial Association.

ATTEND TV. COURSE—Among the Islanders who attended a two-week course in television servicing in Saint John, N.B., were Messrs. J. E. Cousins, Hunter River; C. R. Laird, Alberton; Art Murray, Bedouque; George Matheson, O'Leary. All received certificates of efficiency.

### Card Of Thanks

Mr. and Mrs. Locksley Bowen and family, wish to extend sincere thanks to Dr. Murchison and all kind friends and neighbours, for cards, letters and expressions of sympathy during their recent sad bereavement.

### IN MEMORIAM

In loving memory of Mrs. Gordon Burns, who passed away April 13th, 1945.

Somewhere back of the sunset, Where loveliness never dies, She sleeps in a land of glory 'Neath the blue and the gold of the skies.

Remembered by Husband and Family.

### IN MEMORIAM

In loving memory of Wm. Neil MacKay, Murray Harbour North, who departed this life, April 13th, 1953.

A precious one from me is gone, A voice I loved is still; And in my sad and aching heart I will always love you Father dear. Lovingly remembered by your daughter, Annie Myrtle.

MEN! 495 Will buy your new Easter Hat style by Adam — at Henderson & Cudmore.

JIMMY'S TAXI — Dial 7370 or 5252.

KEROSENE, Electric and Propane Gas, Refrigerators, Bryenton and MacKay.

MATHEWS REPORT study group final meeting tonight 7:30 p.m. Polyclinic.

ROBERT HARRIS NIGHT at the Gallery, Library Building, 8:15 tonight. Mr. R. H. Rogers speaker. Public invited.

A SURE HIT—Marie and Doreen Sullivan, Vernon, ages 6 and 7, vocal duet. Joan Howatt, Crapaud age 14, vocal solo. Kay Conahan, Rollo Bay, dancing with taps. P. E. I. All Star Cavalcade, P. W. C. Auditorium, April 22nd, 8 p.m.

### Card Of Thanks

We wish to thank the many friends and neighbors of the late Mrs. A. J. MacDonald, Tracadie Cross for the expressions of their deepest sympathy and kindness during our sad bereavement.

Signed: Mr. and Mrs. William MacDonald, Mr. and Mrs. Wilson Timmons, Mr. and Mrs. Alex Fraser and Mrs. Stanley Morse.

### IN MEMORIAM

In loving memory of EABLE N. COLES who passed away April 13, 1949. Lovingly remembered by wife and family.

### In Memoriam

In fond and loving memory of Maurice McCloskey who departed this life April 13, 1950. Ever remembered by wife and family.

## SEEDS

SOON BE TIME AGAIN! We Specialize In The Newest and Best Varieties. Send for Free Catalogue Today! ARTHUR VESEY, York, P.E.I.

MEN! Adam Hats 495, smartest styles ever shown. Henderson & Cudmore.

WINS PAINT DRAWING — The winner of the Brandram Henderson paint drawing at Fennell and Chandler Ltd., Saturday afternoon was Mr. Ted Praught, 184 Weymouth Street, City.

AUNT PASSES IN VANCOUVER — Mr. Walter G. MacKenzie of 157 Prince Street, received a telegram last evening informing him that his aunt, Mrs. Donald MacLure, 82, had passed away in Vancouver, B. C., early April 12.

WINS EASTER BONNET — Winner of the Earl of Hillsboro Chapter, I. O. D. E. Easter Bonnet drawing was Mrs. D. I. Sinclair, 20 Buxton St. Mrs. Harry Bernard, Breadalbane, has entered the Prince County Hospital for treatment.

WINS EASTER BONNET — Winner of the Earl of Hillsboro Chapter, I. O. D. E. Easter Bonnet drawing was Mrs. D. I. Sinclair, 20 Buxton St. Mrs. Harry Bernard, Breadalbane, has entered the Prince County Hospital for treatment.

Tuesday, April 18, 1954

The Guardian Page 3

### SAYS SAW SEA SERPENT

TORONTO, (CP)—Sam Johnston said Monday he saw a small sea serpent Sunday while fishing for smelt at the mouth of the Humber river on Toronto's western outskirts. He said the creature, "about three times as long as an eel" and a foot in diameter, swam close to him with part of its body above water, then disappeared.



## The Fox and The Grapes

A HUNGRY FOX saw some fine bunches of Grapes hanging from a vine that was trained along a high trellis, and did his best to reach them by jumping as high as he could into the air. But it was all in vain, for they were just out of reach: so he gave up trying, and walked away with an air of dignity and unconcern, remarking, "I thought those Grapes were ripe, but I see now they are quite sour."

MORAL: Instead of saying "sour grapes" when you can't immediately attain your ambitions, build a ladder to success by opening a savings account with The Canadian Bank of Commerce. Add to your balance regularly and you'll soon be in a position to get what you seek.



Illustration by Arthur Rackham, from the Heinemann Edition of Aesop's Fables.

## The Canadian Bank of Commerce

## A HAPPY EASTER TO ALL!

AND WE ARE GOING ALL OUT TO MAKE YOUR EASTER SHOPPING A PLEASANT EVENT TOO, FOR WE HAVE STOCKED UP ON EVERYTHING YOU WILL WANT - - - AND AT PRICES YOU WILL REALLY GO FOR. LET US HELP YOU FILL YOUR EASTER BASKET—IT'S OUR PLEASURE TO SERVE YOU WITH THE BEST.

### Set A Better Table With These:

Libby's (Fancy) TOMATO JUICE, 48 oz. tin	37c
Libby's GRAPEFRUIT JUICE, 48 oz. tin	33c
Libby's BLEND JUICE, 48 oz. tin	35c
Libby's ORANGE JUICE, 48 oz. tin	37c
Rosedale (Choice) PEAS, 2 tins	33c
Graves (Choice) WAX BEANS, 2 tins	33c
Campbell's VEGETABLE SOUP 2 tins	27c

### And We Have Fresh Vegetables & Fruit Too

Tender Green CELERY, 2 for	29c	Fresh Crisp (Extra Large) LETTUCE, head	25c
Fresh Snappy GREEN BEANS, lb.	29c	Snow White (Large) CAULIFLOWER, head	45c
Luscious Florida GRAPEFRUIT, 6 for	39c	Juicy Florida ORANGES, 2 doz.	75c
Tasty Tender CARROTS, lb.	09c	Tasty (Full of Flavor) PARSNIPS, lb.	09c
Fresh Green ASPARAGUS, lb.	45c	New Crop Florida TOMATOES, pkg.	23c

## LOOK! Easter Beef From The Fat Stock Show

--- and is it ever good! BE SURE TO COME IN AND SEE FOR YOURSELF THE ROAST THAT IS BOUND TO MAKE YOUR EASTER DINNER THE BEST EVER.

Choice Prime RIB ROAST	Choice Prime RUMP ROAST	MATHEWS 8 to 10 lb. TURKEYS
Choice Prime T-BONE ROAST	Choice Prime SIRLOIN ROAST	Lb. 69c
Choice Prime SHOULDER ROAST		

Brome Lake DUCKS, lb.	59c	Regular (half or whole) HAM, lb.	69c
"Special Grade" FOWL, lb.	42c	Cottage (half or whole) ROLL, lb.	75c

Smoked Shankless PICNICS LB. 57c

## FREE HOWDY-DOODY MONEY

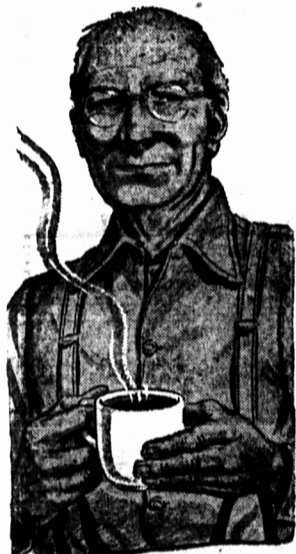
Kids! Be sure to attend the show at the Prince Edward Saturday, April 17th at 10 a.m. to receive free Howdy-Doody Money. 1/2 million dollars of Howdy-Doody Money will be given away absolutely free during this show. Don't forget Howdy-Doody Money is enclosed in Ogilvie Cake Mixes, Rolled Oats and Vita-B Cereal.



Raynor's (Happy Valley) (Pure White) EGGS Per Doz. 49c

Always First - - - for Quality, Selection and Value

GREAT GEORGE STREET, CHARLOTTETOWN, P.E.I. **Pierce's CASH and CARRY** ONE STOP TO SHOP FOR ALL YOUR FOOD NEEDS DELIVERY SERVICE



Pleasure ... in a better cup of tea!



MORSE'S Standard TEA



A New and Distinguished Fabric Creation

Another first! Another original! Garnett of England has created a new and distinguished suiting - in a sparkling variety of new tones.



Tailored by PROGRESS BRAND CLOTHES

69.50

MOORE & McLEOD LTD.



Savoury party snacks. Look for Marven's Seal of Quality