



SHERWOOD BEAUTY SALON STAFF OFFERS CONVENIENT SERVICE
(L-R) E. McQuaid, Mrs. N. Malone, Mrs. T. Skeffington, Mrs. W. Spencer, Jean Gregory
VARIETY OF SERVICES OFFERED

Plenty of car parking feature at Save Easy

Ellis Brothers have provided ample parking area to cater to

Women's clothing has latest styles

The women's clothing section of the Ellis Brothers Shopping Center feature the latest styles and creations.

Formerly part of the general store, it is now a separate department of the shopping center and will have complete lines of clothing for little girls and women of all ages.

The new store features plastic canopy lighting and a basic pastel green and mushroom color combination, with a beige and red rust fleck floor completing the decor.

the large number of cars which will require parking space at the shopping center.

Part of the area, 173 feet, faces on the store fronts on the south of the center. Another 160 feet faces on the St. Peters Road.

The whole area is paved and can handle up to 110 cars.

Bill Ellis said this area will be expanded next year to increase automobile accommodation.

Drug store has complete line
The Sherwood Drugstore, leased by Allison and Earl Jewell, is located in a 52 by 17 foot section of the shopping center. Custom built fixtures and

steel and glass shelving, display

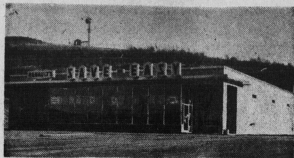
the complete line of drugs to the best advantage. At the back, the mirrored wall is a beautiful and practical addition to the cosmetics section.

No prescriptions will be filled at the shopping centre store but prescriptions will be taken there and filled at the Parkdale drugstore. Prescriptions ordered at this store can be picked up there after they are made up at the other store.

The Sherwood Drugstore features self-service, but clerks will be handy at all times to aid the shopper.



NASHWAAKSIS, N.B.



ATHOLVILLE, N.B.



CHATHAM HEAD, N.B.



SUSSEX, N.B.



BATHURST, N.B.



SAINT JOHN, N.B.



RIVERVIEW, N.B.



SAINT JOHN, N.B.



BATH, N.B.

THE
NEW BRUNSWICK,
NOVA SCOTIA
AND
PRINCE EDWARD ISLAND
SAVE - EASY
OPERATORS, THEIR STAFF
AND SUPPLIERS
CONGRATULATIONS
ELLIS BROS.
AND
WELCOME
THEM TO THIS RAPIDLY
EXPANDING GROUP
OF SUPERMARKETS



LEWISVILLE, N.B.



CAMPBELLTON, N.B.



BATHURST, N.B.



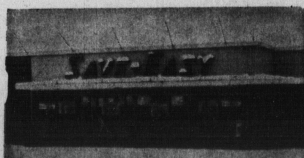
WOODSTOCK, N.B.



GRAND FALLS, N.B.

- TRULY MARITIME
- COMPLETELY MODERN
- BIG ENOUGH FOR VARIETY AND VALUE
- SMALL ENOUGH TO BE FRIENDLY
- FEATURING "KNOWN BRAND" MERCHANDISE
- ALL MERCHANDISE 100% QUALITY GUARANTEED
- FRIENDLY PERSONAL SERVICE IN A "NEIGHBOR OPERATED MARKET"

THE NEW BRUNSWICK AND PRINCE EDWARD ISLAND MARKETS ILLUSTRATED HERE ARE INDICATIVE OF THE MODERN CONCEPT OF SAVE-EASY. THE NOVA SCOTIA GROUP PICTURES WERE NOT AVAILABLE FOR REPRODUCTION.



SUMMERSIDE, P.E.I.



GRAND FALLS, N.B.

CONGRATULATIONS

TO

Harold & Bill Ellis

On The Completion Of Their New
Shopping Centre

We are pleased to be one of their main suppliers

ISLAND PROVISIONERS

387 Water Street

Summerside

CONGRATULATIONS

TO

ELLIS BROS.

on the Opening of Their new
SAVE - EASY FOOD MARKET

Perfection Dairy Products are prominently displayed in the Dairy Cases and in the Food Section.

Central Creameries Ltd.

Summerside

Charlottetown

