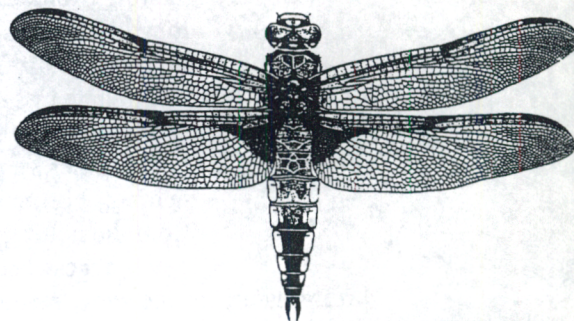


here, and their offspring emerge in August in time to head south before fall. At least that's what it looks like, as their larvae are not known to over-winter in the Maritimes, and yet mature adults are found here in early summer, while young adults are found in late summer. The Common Green Darner is a beauty, and a real whopper in the hand.

**** MacLure's Pond Area, Murray River:**

Common Spreadwing	<i>Lestes disjunctus disjunctus</i>
Familiar Bluet	<i>Enallagma civile</i>
Northern Bluet	<i>Enallagma cyathigerum cyathigerum</i>
Hagen's Bluet	<i>Enallagma hageni</i>
Eastern Spreadwing	<i>Ischnura verticalis</i>
Canada Darner	<i>Aeshna canadensis</i>
Lake Darner	<i>Aeshna eremita</i>
Variable Darner	<i>Aeshna interrupta interrupta</i>
Black-tipped Darner	<i>Aeshna tuberculifera</i>
Shadow Darner	<i>Aeshna umbrosa umbrosa</i>
Eastern Forktail	<i>Ischnura verticalis</i>
Hudsonian Whiteface	<i>Leucorrhinia hudsonica</i>
Red-waisted Whiteface	<i>Leucorrhinia proxima</i>
Four-spotted Skimmer	<i>Libellula quadrimaculata</i>
Ski-tailed Emerald	<i>Somatochlora elongata</i>
White-faced Meadowhawk	<i>Sympetrum obtusum</i>
Saffron-winged Meadowhawk	<i>Sympetrum costiferum</i>
Yellow-legged Meadowhawk	<i>Sympetrum vicinum</i>

Libellula quadrimaculata LINNAEUS, 1758
Fourspot Skimmer



**** Wood Islands Bog (Natural Area on Route 201)**

Common Spreadwing	<i>Lestes disjunctus disjunctus</i>
Emerald Spreadwing	<i>Lestes dryas</i>
Northern Bluet	<i>Enallagma cyathigerum cyathigerum</i>
Eastern Spreadwing	<i>Ischnura verticalis</i>
Sphagnum Sprite	<i>Nehalonia gracilis</i>
Sedge Sprite	<i>Nehalonia irene</i>
Hudsonian Whiteface	<i>Leucorrhinia hudsonica</i>
White-faced Meadowhawk	<i>Sympetrum obtusum</i>

**** Isaac's Lake (or High Bank Pond) (Kettlehole bog pond on Route 348)**

Common Spreadwing	<i>Lestes disjunctus disjunctus</i>
Amber-Winged Spreadwing	<i>Lestes eurinus</i>
Sweetflag Spreadwing	<i>Lestes forcipatus</i>
Azure Bluet	<i>Enallagma aspersum</i> *only PEI site for this so far
Familiar Bluet	<i>Enallagma civile</i>
Northern Bluet	<i>Enallagma cyathigerum cyathigerum</i>
Eastern Spreadwing	<i>Ischnura verticalis</i>
Sphagnum Sprite	<i>Nehalonia gracilis</i>
Sedge Sprite	<i>Nehalonia irene</i>
Canada Darner	<i>Aeshna canadensis</i>