

STOCK QUOTATIONS

Morning Stock Letter

(Received over Pittfield and Co's Private Wire)

NEW YORK, June 13—Most important overnight news is that which came after the close yesterday concerning the inter-state commerce commission decision on surcharges. The Wall Street Journal carries the story that some circles in Washington estimate that the carriers would receive from \$40,000,000 to \$45,000,000 during the last half of the year instead of \$5,000,000 because of the lower rates on iron, coal and coke. Others estimate, however, in view of the increase in traffic, that the carriers would receive for the last half of the year will be \$32,000,000. Wall Street Journal also carries story that it is quite definitely known that United States and England have been discussing what action to take should France put an embargo on gold or devalue the franc. Yesterday's market was somewhat disappointing to some.

However, we do not believe there will be anything conclusive about it as far as the highs that have been seen. We think that if the market should back down further at this time it will at least make another attempt to go into new high ground. We would look for considerable irregularity at the opening.

TORONTO, June 14—Graham Bousquet-Special meeting Graham Bousquet to be held June 19 to approve sale of new company to be formed. New Company will have capital of 3,000,000 shares. Graham, 1,150,000 shares to be issued for property, 500,000 shares to be subscribed by McPatrick at 16 cents, 800,000 optioned same party at prices ranging from 20 to 50 cents. It is not the intention to wind up Graham Bousquet but will carry on at discretion of directors and will prospect and explore desirable properties as occasion offers.

Produce Prices EXCHANGE

(Canadian Press)

MONTREAL, June 14—Wheat, no 2 85. Barley C W no 3 46 1-2. Oats, C W no 3 37 1-2. Oats, feed no 1 35 1-2. Flour, spring wheat patents, lists \$5.30. Flour second \$4.90. Flour bakers \$4.80. Flour, winter wheat patents, choice \$3.43. Flour white corn \$4.20. Flour ton \$18.25. Shorts ton \$18.25. Middlings ton \$19.25. Rolled oats bag 90 lbs \$2.78. Hay no 2 per ton carlots \$9.00. Cheese Ont white 12 2-4. Ont col 12 3-4 to 13. Butter no 1 22 1-2. Eggs A large 24 to 25. Eggs A medium 22 1-2 to 23. Eggs B 21 to 21 1-2. Eggs C 20 to 20 1-2. Potatoes P E I mis 90's \$2.50 to 2.75. 50's \$1.45. Cobblers 90's \$2.40-\$2.65. N. B. mis 80's \$2.10-\$2.50. 50's \$1.45. Man whites 90's \$2.15 to \$2.25. New Potatoes: N. C. and S. C. no 1 bbls \$9.00 to \$9.25. No 2 bbls \$8.25 to \$8.50.

Great for Lambage Minard's

(Canadian Press)

Closing exchange rates:—At Montreal—Pound 5.03 5-8; U. S. dollar 1.00 3-16; franc 6.60. At New York—Pound 5.02 3-4; Canadian dollar 99 25-32; franc 6.58 3-8.

At Paris—Closed. In gold—Pound 12s. 3d; U. S. dollar \$9.28 cents; Canadian dollar 59.28 cents.

NEW YORK, June 13—Foreign demand high 5.02 3-4; low 5.02 5-8; close 5.02 3-4; 60 day bills 5.01 11-16; France 6.58 3-8; Italy 1.87; Belgium 16.92; Germany 40.29; Canada 99 25-32.

Miscellaneous

(Canadian Press)

MONTREAL, June 14—No sales were made on Canadian commodity exchange produce section Saturday and closing quotations were firm on butter and cheese and slightly higher on eggs.

Butter Spot: Que June 22 1-2A. Cheese Spot: Ont white 12 3-4 to 13; Ont col 12 3-4B; Ont col (last-half May) 12 1-2 to 12 3-4. Eggs spot in carlots: Ont A-large 24 1-2 to 25; A, medium 22 1-2 to 23; colored 21 to 21 1-2.

Advertising Rates—Payable in Advance

Central Guardian local, 40 per word; Western and Eastern local, 30 per word; Announcements and Coming Events 20 per word; Classified 20 per word in Memorial Notices, 70c per line in Notices of Condolence 70c per line; Notices of Thanks and Appreciation, 70c per line or 40 per word. Other rates on application. Minimum charge for any advertisement twenty-five cents.

For Sale

WILL SELL OR RENT CONNOLLY STREET cottage, or house, 68 Bayfield Street. L-4926-6-12-31.

FOR SALE—FRESHENED REG. Guernsey cow, gives 60 pounds milk day, testing 6 Wm. Hanna, Gaytown. L-4904-6-12-31

CROSLBY FIVE TUBE RADIO, \$25.00. Toombs Music Store. L-4986-6-13-31

NEW GENERAL ELECTRIC BATTERY Radio, \$55.00, complete. Toombs Music Store. L-4986-6-13-31

FOR SALE—VERY DESIRABLE farm property at Dunstaffnage. For further particulars apply Eastern Trust. L-4929-6-12-31.

USED FURNITURE SALE—Three piece Chesterfield sets, davenport, folding couches, dining room sets, cribs, mirrors, beds and springs, pianos, carpet squares, etc. City Sales and Service, 202 Richmond St., near Prince St. L-4900-6-13-31

TO LET—PARTLY FURNISHED Apartment, Good location. Apply Guardian. L-4983-6-13-31.

TO LET—SMALL APARTMENT or single rooms, furnished. Apply 179 Grafton St. L-4936

Female Help Wanted

GENERAL MAID WANTED TO work at summer cottage. Plain cook. Good wages. Apply "B." Guardian. L-4831-6-10-12-13.

WANTED—SECOND HAND, dress makers bust form. Phone 1177 between 9 A. M. and 6 P. M. Guardian. L-5001-6-15-31.

Georgetown-Charlottetown Bus Service

STARTING MONDAY, APRIL 27th, or as soon after as possible.

Leave Georgetown	8:15 A.M.	Leave Charlottetown	4:00 P.M.
Cardigan	8:35 A.M.	Johnston's River	4:30 P.M.
48 Road	8:50 A.M.	Webster's Corner	4:30 P.M.
Baldwin's Road	9:15 A.M.	Fort Augustus	4:40 P.M.
St. Theresa's	9:40 A.M.	Plaquid	4:50 P.M.
Peasen	9:40 A.M.	Peasen	5:00 P.M.
Plaquid	9:50 A.M.	St. Theresa's	5:10 P.M.
Webster's Corner	9:50 A.M.	Baldwin's Road	5:15 P.M.
Johnston's River	9:50 A.M.	48 Road	5:20 P.M.
Cardigan	9:50 A.M.	Cardigan	5:25 P.M.
Headquarters at Charlottetown	10:10 A.M.	Georgetown	5:30 P.M.
Headquarters at Georgetown	E. J. Goteman	Notans Tea Rooms.	

BUICK 7 PASSENGER CAR
Headquarters at Georgetown
Parcels carried at minimum charge
ALLISON NEUSTIS
Charlottetown P. R. Island

GROUND LIME

We have just received another carload and find we have a few tons to spare, which we will sell at lowest prices to clear.

A. HORNE & CO.
Charlottetown

Quiet Session On Montreal Stock Market

(C.P. By Guardian's Special Wire)

MONTREAL, June 14—Demand for utilities and a general turning to higher prices featured a quiet session of Montreal stock market Saturday.

The utility rise was headed by Montreal Power which climbed to 31 1-2, up one point, while Shawinigan gained 1-4. Other power issues went lower, Power Corporation losing 1 1-8 and B. C. Power 1-8 at 29 5-8.

Firmness was displayed by liquor, metals, papers and issues of Canada Car which were 1-8 higher on the common, in heavy trading, 1-2 higher on preferred, Canada Cement preferred moved up to 60 1-2 while C. P. R. eased 1-8.

Noranda and Consolidated Smelting were each 1-2 better and Hollinger and International Nickel steadied at unchanged levels. The papers, St. Lawrence Corporation gained five eighths, the pre-announced five eighths, and Howard Smith held even.

Dominion Glass, in the first sales in more than a month, jumped 6 1-4 points to a new high of 150.

Sales were 10,355 shares; bonds \$4,800.

MT'L. CURB

(Supplied by Pittfield and Co. Members of Montreal stock exchange and curb market)

Stocks	Open	Last
B & O Oil	29 1/2	29 1/2
Dom Stores	22 1/2	22 1/2
Ford A	20 1/2	20 1/2
Int. Pet	20 1/2	20 1/2
Melcher	11 1/4	11
Walker Good		

Markets At A Glance

(Canadian Press)

Toronto and Montreal—Industrial stocks higher.

Toronto Mines—Golds higher; other groups lower.

New York—Stocks closed higher.

Winnipeg—Wheat up 1-2 to 3-8 cents.

New York—Cotton lower; sugar closed.

Currencies

(Canadian Press)

NEW YORK, June 14—Leading currencies marked time Saturday against the United States dollar, with changes minor in quiet trading.

The pound sterling at \$5.02 was off 1-16 from Friday's close while the Canadian dollar lost 1-32 to 99 25-32 and the franc was unchanged at 6.58 3-8.

MONTREAL, June 14—Leading currencies dipped slightly on Montreal foreign exchange Saturday. The pound sterling closed 11-32 lower at \$5.03 5-8 and the United States dollar 1-32 lower at 3-16 premium. The franc unchanged to hold steady.

Produce

(Canadian Press)

MONTREAL, June 14—Potato prices weakened in the last two sessions of Montreal open produce markets this week and at the close were down 25 to 40 cents from last week's finishing level. Higher trends prevailed on butter, cheese and eggs.

Butter was quoted at 22 1-2 cents a pound for carlots or less of no 1 while lots to retailers were 22 1-4 for solids and 24 for prints.

Cheese was quoted at 12 3-4 cents a pound for no 1 Ontario white, current receipts, and 12 3-4 to 13 for Ontario colored.

Graded egg shipments were quoted at 24 to 25 cents a dozen for A large, 22 1-2 to 23 for A medium, 21 to 21 1-2 for B and 20 to 20 1-2 for C.

Potatoes: P E I mis 90's \$2.50 to \$2.75; 50's \$1.45; 10's 31; cobblers 90's \$2.40 to \$2.65; N. B. mis 80's \$2.10 to \$2.50; 50's \$1.45; 10's 31; Man whites 90's \$2.15 to \$2.25. New potatoes: N. C. and S. C. bbls \$9 to \$9.25; No 2 \$8.25 to \$8.50.

Mortgage Sale

There will be sold by Public Auction in front of the Law Courts Building in Charlottetown in Queens County, on Tuesday the 14th day of July A. D. 1934, at the hour of twelve o'clock noon, ALL THAT TRACT piece and parcel of land situate lying and being on Township number 61 in Queens County aforesaid, and being on the east side of the road leading by Dixon's Mills to Bradshaw, and bounded and described as follows that is to say: Commencing at the northwest angle of land formerly in possession of Angus Stewart and later of Donald Lamont, thence north 90 chains along the east side of said road, thence south 43 degrees east 20 chains due east, thence south 61 chains to said land formerly of Angus Stewart and following the said land westerly to the place of commencement containing one hundred (100) acres of land a little more or less, and is the northern half of said land marked 26 and 27 on plan of said Township.

The above sale is made under and by virtue of a power of sale contained in an Indenture of Mortgage bearing date the 10th day of November, A. D. 1928 and made between Raymond Kennedy of Bradshaw in Queen's County of said Province (of the second part) default having been made in the payment of principal and interest secured by the said mortgage.

Further particulars apply to the office of H. F. MacPhee, Solicitor, Riley Building, Charlottetown, and the 12th day of June A. D. 1934.

JOSEPH McCAVILL, Mortgagee
L-5005-6-15-22-29-7-4

The Eastern Guardian

"SUBSCRIPTIONS to the Charlottetown Guardian may be handed to their Rept. Archie Hume, Phone 47, or left at H. J. Mabon's Drug Store, Montague.

Mt'l. Stock Exchange

(Supplied by Pittfield and Co. Members of Montreal stock exchange and curb market)

Stocks	Open	Last
Abitibi	14	13 1/2
Bathurst		
Beauharnois	14 1/2	14 1/2
Bell Tel	12 1/2	12 1/2
Bissillan	12 1/2	12 1/2
Brew Corp Can	2 1/2	2 1/2
B. C. Power		
Can Nor Pp	6 1/2	7
Can Cement	6 1/2	6 1/2
Can Ind Al	7 1/2	7 1/2
Can Pac		
Celanese		
Cock Flow	58	58
Coca Sisset	21 1/2	22
Dist Seag	37 1/2	37 1/2
Dom Bridge	4 1/2	4 1/2
Dom Sid	4 1/2	4 1/2
Dom Tex	15 1/2	15 1/2
Imp Tob	47 1/2	47 1/2
Int Nickel	14 1/2	15
Massey Farm	14 1/2	15
McColl Front	20 1/2	21 1/2
Nat Brew	14 1/2	15
Nat St Car	15 1/2	15 1/2
Power Co	19 1/2	19 1/2
Shawinigan	11 1/2	11 1/2
Stou Can Pow	6 1/2	6 1/2
St of Can		

MINING

(Canadian Press)

TORONTO, June 14—Moderate profit-taking on the week's rise continued in Toronto mining market Saturday with a firmer tone in the golds persisting till the close when the group was up 3-4 of a point as measured by the exchange index. The miscellaneous mines index was down about a half point, volume at 1,144,000 shares was heaviest of any Saturday in three weeks.

The advance was neutralized by moderate weakness in the senior issues. Dome lost 5-8, McIntyre 3-8, Lake Shore 1-4 and Hollinger 1-8 and Wright Hargreaves slipped back 10 cents.

Among the gainers appeared Buffalo-Ankerite, Macassa, Kirkland Lake, O'Brien, Red Lake, Read-Author, Teck Hughes, Siscoe and Goldie. Heavy action in McWatters featured the late trade with the price advancing 21 cents to 1.65.

GRAIN

(Canadian Press)

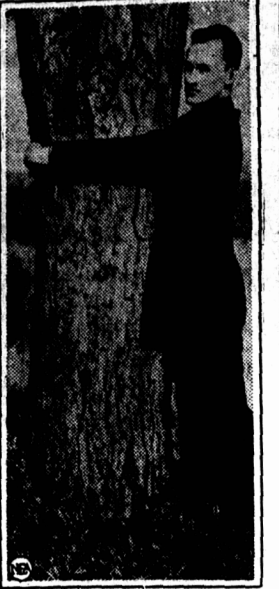
WINNIPEG, June 14—Reportedly adverse crop conditions in the spring-wheat areas of the United States resulted Saturday in fractional advances in wheat prices on the grain exchange.

Gains of 1-2 to 3-8 cent a bushel were scored as reports told of a serious need of rain in the north-west. Backed by the speculative buying that ensued, the July future closed at 77 1-2, October 77 7-8 and December 78 1-4 cents.

Cash and coarse grains prices were steady.

Stocks

Stocks	Close
Afton	6
Alex	9 1/2
Algonia	17
Anglo H	52 1/2
Argoxy	151
Arfield	77
Ashley	15 1/2
Astoria	6 1/2
Barrac	6 1/2
Barry H	6 1/2
Bas Metal	52
Beattie	12 1/2
Big Miss	62
Bird	10 1/2
Bralorne	82 1/2
Buff Bank	760
Bun Hill	17
Buff Can	1 1/2
Can Cal	118
Can Pac	170
Castle T	350
Can Pac	150
Chem Res	82
Clergy	8 1/2
Conlaga	375
Conlaga	220
Cons Chi	185
Dome	6 1/2
Dorr	80
Eldorado	81 1/2
Franklin	110
Gale Lake	40
Goodfish	18
Graham	16
Graham	32
Grandis	10
Greene	100
Gunnar	9 1/2
Halecor	26 1/2
Hard Rock	20 1/2
Harker	17
Hollinger	24 1/2
Homestead	80
Howe	80
J N Cons	25
Kirk Lake	25
Lake Shore	50 1/2
Lam Cont	122
Low Cap	122
Label Oro	5 1/2
Little Long Lee	68 1/2
MacL Co	880
Macassa	455
Man East	20 1/2
McIntyre	20 1/2
McKenzie	20 1/2
McKinley	65
McMillan	5
McWatters	185
Montep	120
Norcap	125
Minto	60 1/2
Moneta	24 1/2



Held under \$50,000 bond in the kidnaping and flogging case of Robert Penlon of Ecorse, Mich., Frederick A. Guiley is shown as he demonstrated to Detroit authorities how victims were tied to this tree and lashed by the Black Legion. The tree is on an abandoned farm 11 miles from Detroit. Guiley said he was forced at gun point to join the legion and had tried vainly to get out.

Stocks Move Forward On New York Mart

(Associated Press Financial Writer)

(A.P. By Guardian's Special Wire)

NEW YORK, June 14—The stock market wagon Saturday rolled back on the recovery road.

With the principal motive power furnished by utility, rubber and specialty issues, gains of fractions to 2 or more points were recorded over a broad front.

The market idled during the first hour, but picked up a little momentum in the final period. Transfers totalled 375,400 shares compared with 253,710 last Saturday.

The Associated Press average of 60 stocks held at net advance of .4 of a point to 62.9. The index was off .6 Friday.

Consolidated Edison led the power group with a gain of a point at 35 3-4. North American was up as much as 28 7-8 and fractional improvement was shown by Columbia Gas at 20 1-8. United Corp. at 7 1-4 and Public Service of New Jersey at 45 7-8.

Rail stocks were sluggish notwithstanding the extension of most emergency freight surcharges by the Interstate Commerce Commission. Chesapeake and Ohio, which stands to lose substantial revenues from a lowering of soft coal rates, eased 1-4 at 58 1-4, but great Northern, affected by the shaving of iron ore shipping charges, was up 3-4 at 41 3-4. Santa Fe, N. Y. Central and Northern Pacific were unchanged to slightly better.

J. I. Case, on a small turnover, gained 3 points at 175 and minor advances were held by U. S. Steel at 62 1-2, American Telephone at 168 3-8, Bethlehem at 53 3-8, Deere at 79 and Montgomery Ward at 44 7-8.

Bonds steadied. Wheat was up 3-8 to 7-8 of a cent a bushel and corn was unchanged to 3-8 of a cent improved. Cotton closed at the same as yesterday's final figure to 20 cents a bale lower.

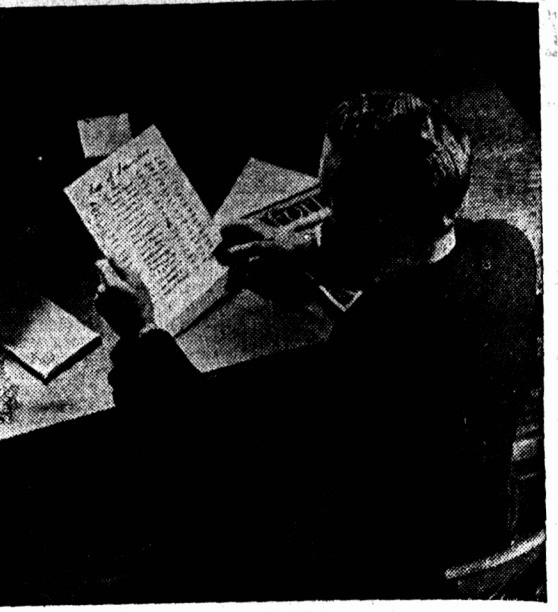
Stocks

Stocks	Close
Morris K	60
Murphy	5 1/2
Newell	58 1/2
Noranda	68 1/2
Nor Cap	66
O'Brien	260
Oiga Op	8 1/2
Omsag	440
Pamout	105
Paymaster	145
Perron	2 1/2
Pet Cob	640
Pick Cro	292
Premier	375
Preston	20
Pros Air	260
Que Min	32
Red Anth	272
Red Lake	150
Reno Gold	150
Rocke	25
Royalty	27 1/2
San Ant	80
Shawin	80
Sheep C	705
Sherrie	80
Slades	185

FOR SALE OR TO RENT

Desirable property, 75 Dorchester Street, dwelling house comprising 14 rooms and shop, bathroom, hot water heating. Suitable for store and boarding house or for conversion into apartments or tenements. Apply 82 Federal Street. L-5368-6-8-M-W-F-14.

Must lower interest rates mean LOWER INCOMES?



LET AN IMPERIAL INCOME PROTECTION POLICY make up the deficiency

A FEW years ago your estate was, perhaps, adequate to care for your dependents—sufficient to provide an income for yourself after retirement. Is that true today? At present low interest rates what yearly income would your estate earn?

A quick and certain means of building up your estate is afforded by an Imperial Income Protection policy. In case of your death the full value of the policy will be immediately available for your dependents; and in case you live capital will be accumulated to provide an income for yourself after you retire from business life.

Such a policy will guarantee to you, for example, (a) \$50 or more a month for life, beginning when you are sixty (b) \$5,000 or more in cash for your dependents if you die before age sixty and (c) absolute safety for your investment regardless of the ups and downs of business.

Stop worrying about low interest rates. Get information about how an Imperial Life policy will endow your estate with ample income-earning power.

IMPERIAL LIFE

HEAD OFFICE - TORONTO, ONT.
Branches and Agents in all important centres

Stocks	Close	UNLISTED	Close
Siscoe	88 1/2	Alstermac	21
Sou Tib	46 1/2	Bret To	8 1/2
Stada	335 1/2	Can Man	27 1/2
St Anth	35 1/2	Church H	7
St Basil	17 1/2	Cobalt	2 1/2
Sud Lim	133	Home Oil	105 1/2
Sylvanite	280	Hud Bay	24
Tachola	53	Lak Mar	17 1/2
Teck H	665	Mandy	75
Toburn	150	Marilyn	22 1/2
Texas	145	N Hawk	4
Towamag	37	Oisiko	10 1/2
Ventures	108	Park Hill	10 1/2
Wells Amu	106	Pawnee K	9 1/2
Wayade	12 1/2	Pend Ore	11 1/2
White Eag	435	Pore Cro	9 1/2
Wright H	810	Richie	9 1/2
Ymir Y G	80	Robb Mont	4 1/2
Total sales 1,144,000.		Sud Mines	44
		Temiska	185

VALUABLE PROPERTY FOR SALE

That well-known property of P. Mullins, No. 99 Pownall St., consisting of large house with store. House contains 15 rooms, including bath room, steam heated; large yard; stable to accommodate 15 horses. Central location for store, hotel, rooming house and stabling. Property in good repair.

If not sold by June 19th will be sold by public auction at 2 p.m. on that date.

For particulars apply on the premises or to J. P. BRADLEY & CO., Auctioneers. L-5296

JUST KIDS

