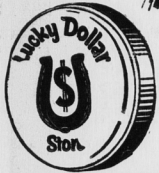


3  
Big  
Days  
Nov.  
14th,  
15th,  
16th



# Products of P.E.I.

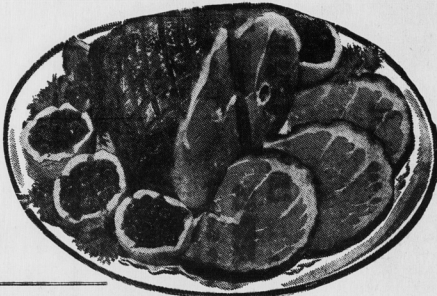
# SALE



MAPLE LEAF

## PICNIC 39<sup>c</sup>

Eats Like Ham lb.



ISLAND FIRST GRADE  
**BUTTER**  
2 Lbs. For **\$1.09**

MAPLE LEAF Sliced LB. **33<sup>c</sup>**  
**BOLOGNA** By The Piece LB. **29<sup>c</sup>**

ISLAND  
**HONEY** 3 LBS. **59<sup>c</sup>**  
PERFECTION  
**MILK** 5 TALL TINS FOR **79<sup>c</sup>**  
FLAVOR PAK  
**PEAS** 6 20 OZ. TINS FOR **\$1.**

ISLAND  
**CHEESE** LB. **49<sup>c</sup>**  
FRASER  
**CHICKEN** 3 7 OZ. TINS FOR **\$1.**  
FLAVOR PAK WAX  
**BEANS** 6 20 OZ. TINS FOR **\$1.**

ISLAND SUMMER  
**SAVORY** 2 PKGS. FOR **25<sup>c</sup>**  
FRASER POTTED  
**MEAT** 3 7 OZ. TINS FOR **\$1.**  
SEA CREST  
**Mackerel** 4 15 OZ. TINS FOR **\$1.**

SUNSET  
**BACON** LB. **49<sup>c</sup>**  
S. P. PLATE  
**BEEF** CORNED BEEF LB. **35<sup>c</sup>**  
GRADE "A" BROILER  
**CHICKEN** Whole lb. **39<sup>c</sup>**  
CUT UP lb. **43<sup>c</sup>**

**Island Frozen Foods**

EAST PAK <b>COD FILLETS</b>	16 OZ.	<b>31<sup>c</sup></b>
KOLD PAK <b>STRAWBERRIES</b>	TUB	<b>39<sup>c</sup></b>
PERFECTION <b>ICE CREAM</b>	½ GAL.	<b>89<sup>c</sup></b>

UNION  
**LOBSTER PASTE** . . . . . 8 OZ. TIN . . **19<sup>c</sup>**  
SEA CREST  
**LOBSTER** . . . . . 2½ OZ. TIN **65<sup>c</sup>**  
ATLANTIC  
**CHICKEN HADDIE** . . . . . 2 15 OZ. TINS FOR **59<sup>c</sup>**  
COTTAGE  
**FRESH BEEF** . . . . . 2 15 OZ. TINS FOR **55<sup>c</sup>**  
AVONDALE  
**CHICKEN ON THE BONE** . . 15 OZ. TIN **65<sup>c</sup>**  
**JOHNSONS POTTED MEAT** TUB **37<sup>c</sup>**

DOMESTIC  
**Shortening**  
**3** 1 LB. PKGS. FOR **\$1.**  
200 SIZE POP UP  
**KLEENEX**  
**6** BOXES FOR **\$1.**

PYREX 6 CUP SIZE  
**TEA POT**  
REG. PRICE \$4.95  
EXTRA SPECIAL  
**\$2.99**

CRINO INSTANT  
**Milk Powder** 3 LBS. **89<sup>c</sup>**  
LIBBY'S TOMATO  
**JUICE** 45 OZ. TIN **37<sup>c</sup>**  
HEINZ  
**Pork & Beans** 15 OZ. **21<sup>c</sup>**  
MOSES O. P.  
**TEA BAGS** 60 GAUZE **89<sup>c</sup>**  
HEINZ TOMATO  
**SOUP** 2 16 OZ. TINS **25<sup>c</sup>**

MAPLE LEAF  
**MINCEMEAT** 28 OZ. TIN **49<sup>c</sup>**  
MAPLE LEAF  
**CHEESE SLICES** ¼ LB. **29<sup>c</sup>**  
LUNCHEON MEAT  
**KAM** 2 TINS FOR **89<sup>c</sup>**  
MAPLE LEAF CANNED  
**PICNIC** 1½ LB. **\$1.33**  
MAPLE LEAF  
**CHED-R-SPREAD** 16 OZ. **55<sup>c</sup>**  
ROBIN HOOD EASY MIX  
**CAKE MIX** CHOC. AND WHITE 2 FOR **29<sup>c</sup>**

JELLO INSTANT—CHOC., VAN., BSCH.  
**PUDDING** 3 FOR **49<sup>c</sup>**  
LOWNEY'S  
**BRIDGE MIX** 18½ OZ. **45<sup>c</sup>**  
KING SIZE  
**SURF** **\$1.09**  
NEW LIQUID SUNLIGHT  
**SOAP** 24 OZ. **67<sup>c</sup>**  
DOG FOOD  
**CHUM** 6 15 OZ. TINS **69<sup>c</sup>**  
AERO LIQUID  
**WAX** PT. TIN **49<sup>c</sup>**

**FRESH ISLAND PRODUCE**

ISLAND <b>Carrots</b>	2 LB. CELLO BAG	<b>17<sup>c</sup></b>
ISLAND <b>Cabbage</b>	LB.	<b>6<sup>c</sup></b>
SOUTH AFRICAN <b>Oranges</b>	5 LB. CELLO	<b>75<sup>c</sup></b>
FLORIDA <b>Grapefruit</b>	3 WHITE OR PINK	<b>29<sup>c</sup></b>
ISLAND <b>PARSNIPS</b>	25 OZ. CELLO BAG	<b>17<sup>c</sup></b>



**.... HONEST VALUES, FRIENDLY SERVICE**