



**HOORAY!
PLAY TODAY!**

CLOVER FARM GIGANTIC CASH GAME

**YOU MAY WIN
\$1000 CASH**

**THOUSANDS OF DOLLARS IN PRIZES!
CASH FOR CANADIAN CONSUMERS!
NOW! AT YOUR CLOVER FARM MARKET!
NO PURCHASE REQUIRED**

(CONTEST ITEM) M/R LIQUID
DETERGENT 2 24 OZ. **85^c**
BTLS.

(CONTEST ITEM) WAGSTAFFE JAM—RASPBERRY OR
STRAWBERRY 2 24 OZ. **55^c**
BTLS.

(CONTEST ITEM) AEROWAX
LIQUID WAX 1 PINT **49^c**
TIN



MAPLE LEAF SHANKLESS SMOKED

PICNICS
HALF or WHOLE Lb. **39^c**

**ONLY AT
CLOVER FARM STORES**

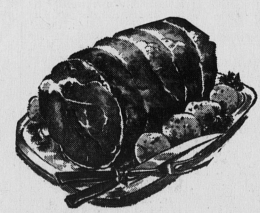
| | | |
|---------------------------------------|--------------------|-----------------------|
| CLOVER FARM PEANUT BUTTER | 16 OZ. ICE BOX JAR | 39^c |
| CLOVER FARM SALAD DRESSING | 16 OZ. JAR | 33^c |
| CLOVER FARM BARTLETT PEARS | 2 20 OZ. TINS | 55^c |
| CLOVER FARM IN TOM. SAUCE BAKED BEANS | 2 20 OZ. TINS | 35^c |

(CONTEST ITEM) CLOVER FARM TOMATO
CATSUP 2 11 OZ. **41^c**
BTLS.

(CONTEST ITEM) MONARCH CAKE
MIXES 2 POUCH **35^c**
PAKS

RED ROSE GAUZE
TEA BAGS 60 **89^c**
COUNT

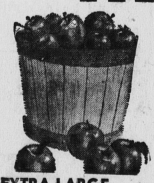
BE PREPARED WITH ANTI-FREEZE
PRESTONE 1 GAL. **2.99**
TIN



ROLLED AND BONED
BABY BEEF
ROAST
Lb. **55^c**

"OCTOBER CHEESE FESTIVAL SPECIAL"
P. E. I. MILD
CHEESE
49^c
Lb.

P. E. I. GRAVENSTEIN
APPLES
5 **39^c**
Lbs.



EXTRA LARGE

SWEET, JUICY

Cauliflower EA. **23^c** **ORANGES** 5 LBS. **75^c**

Young, Tender
BEEF LIVER
Lb. **39^c**

Sweet Pickled
PORK HOCKS
Lb. **21^c**

Canada Packers
RINDLESS BACON
Lb. **49^c**

GET A "FREE" CONTEST CARD EVERY TIME YOU VISIT YOUR FAVOURITE CLOVER FARM STORE SPELL "CLOVER FARM"

JELLO (ALL FLAVORS)
Puddings 3 REG. **39^c**
PKGS.

SCHNEIDER'S
SNACK 12 OZ. **43^c**
TIN

JOHNSON & JOHNSON
MODESS REG. **39^c**
12-PKG.

Willard's
WILLOW CRISP
(Reg. 58c lb.)
49^c

MARVEN'S
Milk Lunch 11 OZ. **29^c**
PKG. LOW IN CALORIES

Dream Whip 8 OZ. **29^c**
PKG. JOHNSON'S

Baby Powder SMALL **39^c**
TIN

Full
Particulars
At Your
Clover Farm
Store

Play
Clover Farm
for 6
Weeks with
the
Following
Contest Items

- Purex TOILET TISSUE (White or colored)
- LIQUID WAX Aerowax (Pint 'in)
- Wagstaffe Rasp. or Strawberry JAM 24 oz.
- Wagstaffe Asst. JAMS & JELLIES 9 oz.
- Anacin TABLETS 6 oz.
- NOXZEMA Skin Cream 2 1/4 oz.
- Clover Farm INSTANT COFFEE 6 oz.
- Clover Farm TOMATO CATSUP 11 oz.
- Alcan Aluminum FOIL WRAP 12"
- Bicks Sweet MIXED PICKLES 16 oz.
- Mir Liquid DETERGENT 24 oz.
- York CREAM CORN 20 oz.
- FRYS COCOA 1/2 lb.
- Clerk's BEANS in Tom. Sauce 20 oz.
- Q.T.F. Tropical FRUIT SALAD 15 oz.
- Crisp Flake SHORTENING 1 lb. pkg.
- Bee Hive CORN SYRUP 2 lb. tin
- Kam LUNCHEON MEAT
- Shirriff's Good Morning MARMALADE
- Nestles QUIK 1 lb. tin
- E. D. Smith Cherry PIE FILLER 24 oz.
- Flavor Pak PEAS, 20 oz.
- Brown's Festival COOKIES
- Monarch CAKE MIX
- Blue Ribbon EXTRACTS
- Crush BEVERAGES
- SURF, 4 lb. pkg.
- Barbour's PEANUT BUTTER 16 oz.
- King Cole TEA BAGS 60s
- Avon APPLE JUICE 48 oz. tin
- Silver LASSES MOLASSES Quarts

Prices Effective October 15-16-17

