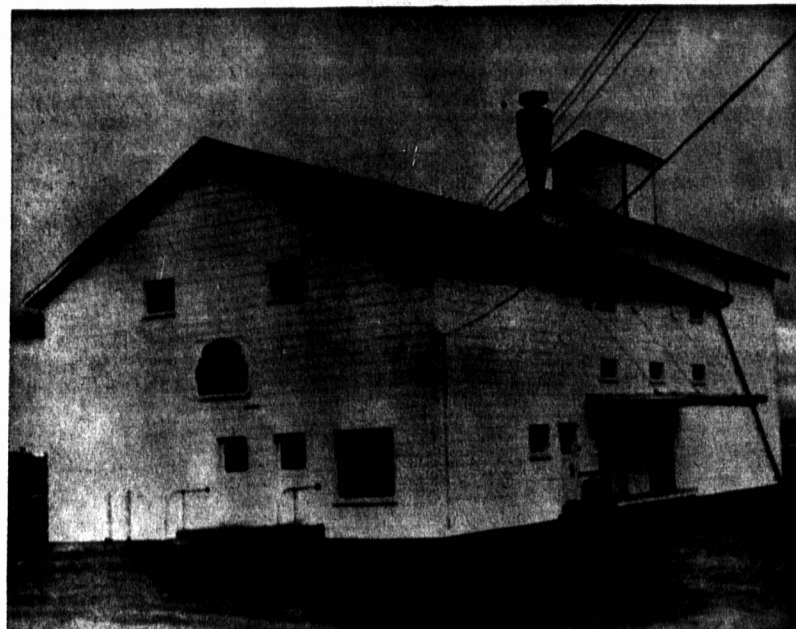


E. J. MacDougall, Vernon, Opens New SHUR-GAIN Feed Mill Today at 2.30 p. m.

With the completion of our new building and installation of Modern Machinery, the staff and I hope to serve you with even greater efficiency than we have in the past. It shall be our endeavour to offer fast, courteous service of the highest quality, so may we solicit your continued patronage and thank those so co-operative in making this opening a success.

Signed . . .
E. J. MacDougall



Barter's Film Lab.

A highlight in the comparatively short business career of Mr. E. J. MacDougall of Vernon Bridge will be reached tomorrow when he officially opens his new SHUR-GAIN feed plant at Vernon Bridge.

This new plant, which is equipped with the most modern machinery, is 82 feet long and 42 feet in width. It has two floors and a basement for mixing, shipping and storing feeds.

Construction of the building was commenced in June of this year and was necessitated by a fire which destroyed Mr. MacDougall's old plant last March. The site of the new plant has been moved across the road directly opposite Mr. MacDougall's dwelling quarters.

Situated on the West side of Vernon Bridge the plant stands out like a monument on the outskirts of the community. The exterior of the building is covered with white asbestos siding which gives the large structure an almost immaculate appearance.

The building is built of wood on a concrete foundation. Asphalt roofing tops off the building while the asbestos siding on the walls has been given silicon treatment. The concrete basement is waterproof.

Mr. MacDougall operates an egg-grading station in connection with the feed mill. The business office is situated on the right hand side upon entering the main door. Mr. MacDougall's private office adjoins the business office.

Across the hall from the business office is the egg storage room behind which is the egg grading room. These rooms and offices are located on the first floor. Egg loading facilities for trucks have their outlet from the egg storage room.

In the feed mill plant itself there is space on the first floor to accommodate 120 tons of bagged feed. The second floor will hold about 75 tons of bagged feed.

The machinery for the operation of the feed plant is located on all three floors. Primary operations commence on the first floor where a screw conveyor leading from the outside of the building will carry grain from trucks onto the elevator.

The grain will be distributed from the elevator by a distributor spout to one of the huge storage bins. There are four storage bins in the plant, each with a capacity of 16,000 bushels.

From the storage bins the grain is taken on the screw conveyor to the elevator again and deposited in one of the nineteen supply bins.

The grain then is moved from the supply bins onto the weighing scales and then directly into the hammer or roller.

After the grain has been ground in the hammer mill it can be blown up a pipe and bagged off on an automatic scale.

The next step in the process is the mixing of feeds, concentrates, minerals and molasses. The feed is conveyed from the hammer or roller to the mixer where the concentrates, different minerals and molasses are added.

The molasses mixer is located on the feed mixer. The molasses is sprayed onto the feed after the concentrates and minerals have been added. Molasses can also be added to any custom grain.

Upon completion of the mixing operations the prepared feed is taken up an elevator to a bin where it is bagged off on an automatic scale. It is then ready for shipping.

The hammer mill has a capacity (Continued on Page 13)

Congratulations and Good Luck

We take this opportunity to extend to you our very best wishes for the success of your new venture.

Bosco & Bower Ltd.

Grain - Feed - Balanced Rations - Produce - Fertilizer
MONTREAL

TO E. J. MacDOUGALL

We consider it indeed a pleasure to be associated with you and take this opportunity to extend —

CONGRATULATIONS

and

BEST WISHES

on the opening of your

New Feed Mill Service

At Vernon, P. E. I.

THE CANADIAN **Fairbanks - Morse** COMPANY LIMITED
1248 BARRINGTON STREET
HALIFAX, N. S.

CONGRATULATIONS!

TO MR. E. J. MacDOUGALL ON THE OPENING OF HIS NEW MODERN FEED MILL.

IT WAS OUR PLEASURE TO HAVE SUPPLIED THE CONVEYORS, ELEVATORS, HOPPER SCALES AND BAGGING SCALES.

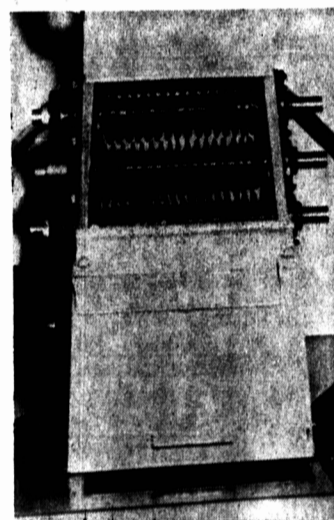
STRONG SCOTT LIMITED

WINNIPEG
TORONTO CHATHAM CALGARY
"EVERYTHING FOR EVERY FEED, ELEVATOR & SEED PLANT"

FOR BETTER BAKING Satisfaction - USE

FIVE ROSES
VITAMIN ENRICHED FLOUR

"IT'S OVEN TESTED"



On the opening of his New Feed Mill Service. Mr. E. J. MacDougall will be the first to use the MASTER MOLASSES MIXER in this Province. This machine is manufactured by the Fabricators of Goodison Feed Mixers and will provide a new and valuable service to local farmers. So we say . . .

"CONGRATULATIONS"

SARNIA MARINE AND MACHINE LIMITED
SARNIA, ONTARIO

EXTENDING BEST WISHES

TO

EVERETT J. MacDOUGALL

on the opening of his new FEED MILL

THE SMITH BROKERAGE CO. LTD.
SAINT JOHN, N. B.

Maritime Brokers For Flour & Feed

Congratulations

TO

E. J. MacDougall

ON THE OPENING

OF HIS

WAREHOUSE & FEED MILL

We are happy to recognize this important event and add our happiest good wishes for the opening on Friday. May the future of this venture be crowned with success.

ROOFING and SIDING SUPPLIED BY

Brantford Roofing (Mar.) Ltd.

FACTORY AT COLDBROOK, N. B.

Manufacturers of
ASPHALT SHINGLES, FELTS
SEALED IN SIDING, SHEATHING
and WATERPROOFINGS

Congratulations!

TO

E. J. MacDOUGALL

ON THE OPENING

OF HIS NEW

SHUR-GAIN

FEED SERVICE PLANT

AT VERNON, P. E. I.

CANADA PACKERS LIMITED

FEED AND FERTILIZER DIVISION

CONGRATULATIONS

TO

E. J. MacDOUGALL

VERNON, P. E. I.

Upon The Opening Of His New Feed Mill Service

IT HAS BEEN OUR PRIVILEGE TO SUPPLY THE GENERAL MOTORS DIESEL ENGINE USED IN THIS MILL

Goodspeed-Millard Equipment Ltd.

TRURO, NOVA SCOTIA

"Diesel Power For All Purposes"