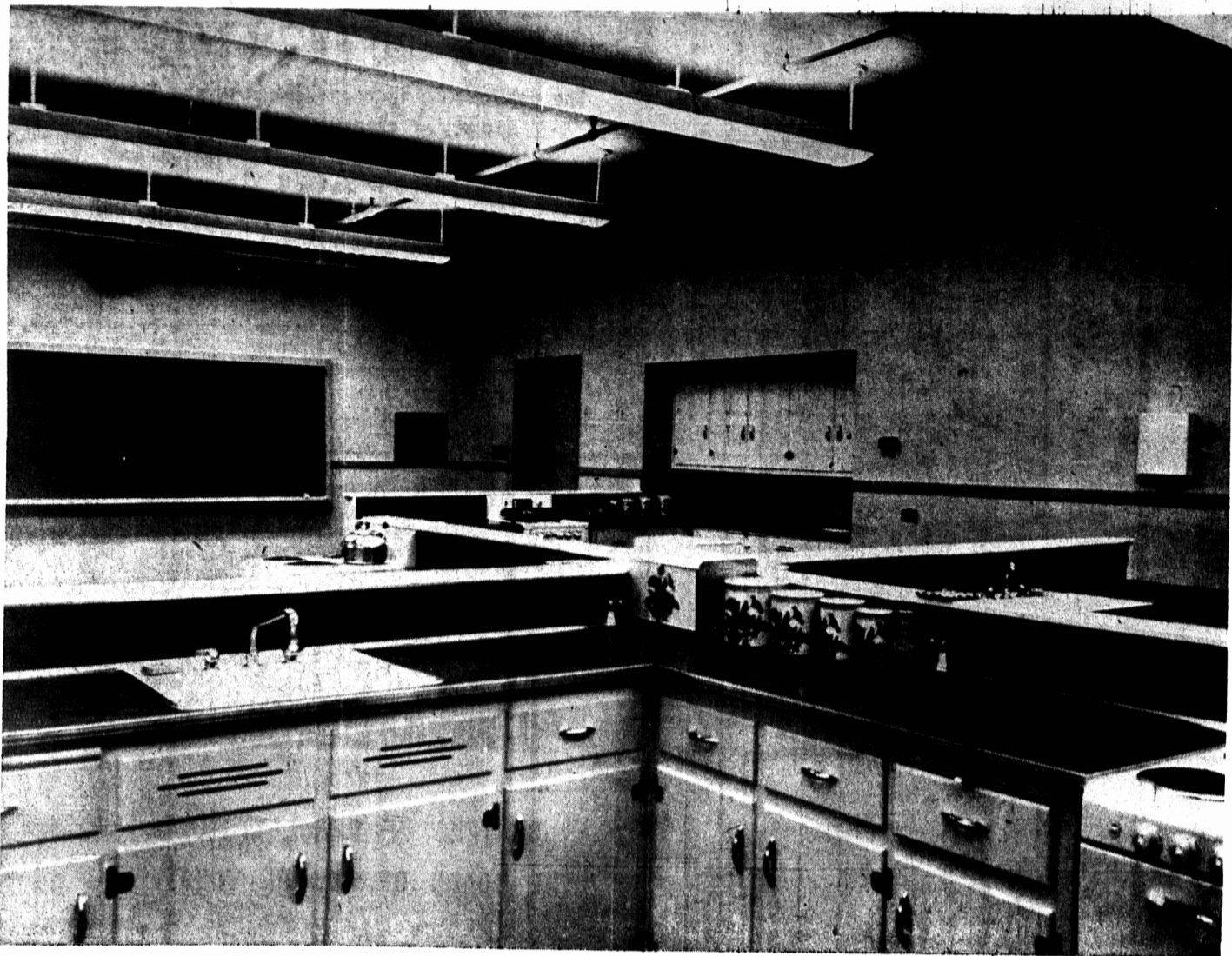
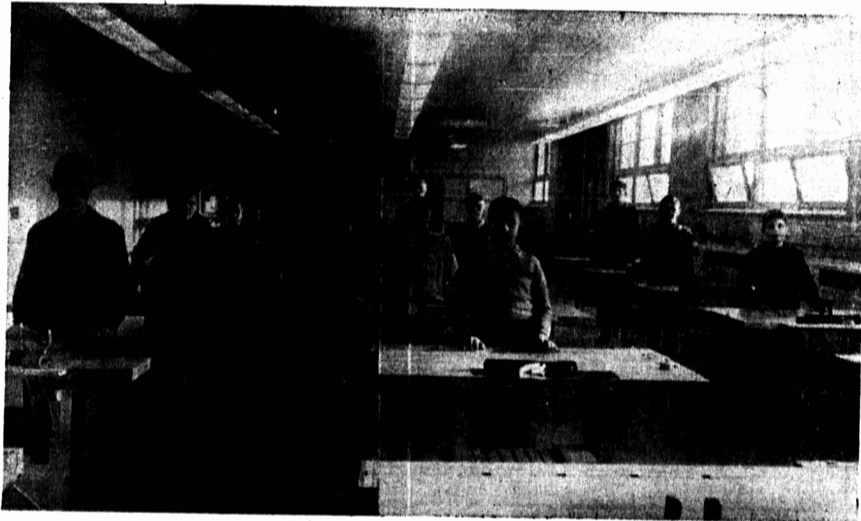


# Offers Splendid New Educational Facilities



HOUSEHOLD SCIENCE



MANUAL TRAINING

(Continued from page 7)  
**Marks Milestone**

though primarily a gymnasium for the use of the students, has been designed to meet other requirements. With a seating capacity of 800, it is expected that the auditorium will be extensively used by the general public for conventions, theatricals, musicals, dances, etc. All of the classes will use the floor during each week for their physical training program.

All rooms, including the gymnasium are connected with the Principal's office by an inter-communication system, over which announcements can be made to a single room or collectively as the need may require.

A standard shooting gallery has been provided for the Cadets, with the necessary room for quarter-master's stores.

Contractors for Queen Charlotte High School were County Construction Co. Ltd., F. W. Curtis, president and general manager, Architects and engineers, Downie, Baker and Ahern, Halifax, W. W. Downie, supervising architect, E. S. Blanchard was associate architect until the time of his death. The foundation work by M. F. Schurman Co. Ltd., was started late in September, 1953.

The cornerstone was laid on Sept. 8, 1954 by R. G. Lea, M.D., chairman of the Charlottetown School Board. Classes were opened five days later.

**COMMODIOUS AREA**

The High School is situated on North River Road on a land area of 4.8 acres, including a parking area of 55,000 square feet, sufficient to accommodate 300 cars. The playing field is 350 ft. long and 210 ft. wide. A chip sealed gravel walk from the rear of the school leads to Maple St., to give a shorter means of access for pupils walking or riding bicycles. There are spacious lawns fronting the main entrance.

Classrooms are 22x31 and seat 32 students. Science Room 22x50 with fume chamber and storage cabinets complete length of one 50 ft. wall. Library and Music Room 41x58 with a seating capacity of 100. The Librarian's office adjoining is 12x18. Domestic Science Room 22x40, equipped with cupboard, sideboard and chairs, four electric ranges, one propane gas range and refrigerator. Sewing Room 22x32. Equipped with five work tables, cutting table, toilet

trays, garment storage closet and filling room. Rifle Range 13 ft. 6 inches wide, 119 ft. long of reinforced concrete, completely equipped.

QM Stores — adjoining the rifle range, 22x31 for storage of rifles, cadet uniforms, etc.

Lunchroom and kitchen 62x22, equipped with cupboards, sideboards, sinks, etc., of sufficient size to handle lunches for students unable to go home at noon owing to inclement weather.

Manual Training Room — 95x24 with drafting room 24x24 and carpentry shop 52x24. The remainder of the room is taken up in storage space and Manual Training instructors office.

Sheet Metal Shop—31x22, situated in basement of North wing.

**OTHER FACILITIES**

Auditorium—gymnasium — seating capacity 800, 98 ft. long and 60 ft. wide, with office, toilet and storage rooms in the rear and a gallery eight feet wide and 60 feet long over these. There are five main exits from the gymnasium, which is equipped with folding bleachers along the north wall of the gym for use in watching basketball and badminton games. The floor is marked off in courts for basketball, volleyball and badminton. The 50x29 stage is equipped with a main curtain, side and drop curtains, foot-lights and spot lights.

Shower Rooms — located at the rear of stage — two rooms 24x28, boys and girls. The gym instructors office and gym storage is just across the hall from the gymnasium, the office being 8x24 and the storage room is 6 ft. 6 in. by 12 ft. and the fireproof vault with safe door is 9 ft. 6 in. by 10 ft.

At the main entrance there is a block of rooms 36x20 containing the Principal's office, adjoining office and waiting room, and rest rooms for men and women teachers.

Heating—The building is heated by steam line from the boiler room of the Provincial Sanatorium. Room heat is individually controlled by a thermostat in each. The fresh air ventilation system is automatically controlled.

Lighting — Fluorescent fixtures are installed throughout except in the gymnasium where incandescent lights are dropped and protected by wire screens.

Fire protection — Sprinkler system which operates automatically when temperature reaches a certain degree. When the sprinkler begins to operate a bell will ring in the Principal's office and also in the City Fire Hall. At various points in the hall of the school, glass fire alarm boxes are located where an alarm may be sounded at any time, which will ring through to the City Fire Hall.

**STAFF**

Lt-Col. L. T. Lowther, B. A. — O.B.E. — Principal  
J. A. S. Williams, B. A. — Vice-Principal (Grade X)  
A. W. Kennedy — Grade X  
Ann Matheson — C X

Continued on page 9

**DOWNIE, BAKER and AHERN**

ARCHITECTS and ENGINEERS

HalifaxSydney

WITH  
**COMPLIMENTS**  
OF  
**NEWFOUNDLAND**  
**HARDWOODS**  
LIMITED

St. John's,  
Newfoundland

*Leader*

**FLUORESCENT LIGHTING  
FIXTURES**

For The  
**QUEEN CHARLOTTE  
HIGH SCHOOL**

Supplied by  
**Robertson-Irwin  
LIMITED**

Maritime Representative:  
**DAVID MACNAB**  
37 Mumford Road  
Halifax, Nova Scotia

**ON THE  
NOTABLE OCCASION  
OF THE OFFICIAL OPENING  
OF THE  
QUEEN CHARLOTTE  
HIGH SCHOOL**

We congratulate the City and the Citizens  
for this fine achievement. We are proud to  
have been associated with this modern  
project.

**Parker Brothers Ltd.**  
P. O. BOX 1571 HALIFAX N. S.

**CANADIAN GENERAL ELECTRIC ...**

**Extends Congratulations**  
on the opening of the new  
**Queen Charlotte High School**

The new Queen Charlotte High School is more than an excellent new building—it is also a magnificent stride forward in the better education of Canada's young people.

Canadian General Electric, through the electrical contractors Valley Services Ltd., of Bridgewater, N. S., are pleased to have been able to supply wire, lighting equipment, and panelboards for this admirable job of construction. Architects: Downie, Baker & Ahern.

  
**CANADIAN GENERAL ELECTRIC COMPANY LIMITED**