



MINE BLAST

RAFAM, EGYPT —Boppers mine they have just uncovered Victor procure, left of Chilli from the ground. The two sack, B.C. and Bruce Matthews diers, shrving with UNEF are of Langruth, Man., explode a members of the 1st Middle East

delachment of the Royal Canadian Engineers (CP) from National Defence).

ners were Betsy Ives, Heather Stewart, Marlene Simmonds, Dorothy Campbell, Pamela Hennessey, Barbara Acorn. Highest points for inspection was won by the "Helping Hands" cottage. Activities during camp included a daily swim, campfire on the shore marshmallow roast, test work and badge work, which included cooking, worship service, treasure hunt, etc. Monday brought the fun to an end. All agree this is a lovely way to close a Brownie Year and we hope to be able to make this an annual event.

GUIDE CAMP
The Girl Guide Camp which was held at Rustico has come to a close. This camp was an extremely well run camp, and the Guides have gone feeling that they have had a very happy and busy time, a great deal of badge work being done. The section of the camp doing pioneer camping had an interesting time, and do you know what they cooked for breakfast one morning — trout and from what I heard, they surely tasted good. The credit for the success of this camp goes first to Mrs. John Rawek, Camp Commandant, with her leaders, Mrs. Charles Boudreault, Mrs. Wilfred Perry,

Mrs. Emilie Arseneault, nurse. Mrs. Rawek spoke highly of her junior leaders who were a wonderful help to her. Wendy Armstrong, swimming instructor, Marie MacGuigan, Annie Laurie MacLean, Susan White-side, Mary Ann Lidstone, A. Heustia, Phyllis McMillan. The Guides and Leaders are very grateful to those ladies who gave so much of their time to come to the camp to instruct and pass their badges. Also Miss Marion Langille, Camp Commissioner with her committee, who spent a great deal of time and energy worrying and planning to make this camp the huge success that it was.

NAME PEARKES SECRETARY
OTTAWA (CP)—Appointment of Richard H. N. Roberts, 25, of Vancouver as private secretary of Defence Minister Pearkes was announced Wednesday. He is a graduate of the University of British Columbia and has studied at Cambridge University and the London School of Economics.

RAPID RASPING
In a single summer the katydid rasps its wings together as many as 50,000,000 times.

CONFIDENTIALLY YOURS

—by Byrne Hope Sander
MONTREAL, Aug. 8th—Seen the "picture gallery" at your grocer's yet? Nooo... I don't exactly mean an art exhibit. I mean the sparkling new ROYAL INSTANT PUDDING "picture-packages." They're on his shelves right now. And they look so good, you feel like eating the pudding right off the package. They're a big help in selecting the puddings you want. Each flavor is beautifully smooth-tasting desserts. And there's no cooking over a hot stove. Less washing up after. And for you mothers, just remember that Royal Instant Puddings are made with fresh, wholesome milk. So let those youngsters dig in!

TRAVELLING becomes a complete pleasure only when you can leave everyday cares and worries behind. So why take wallet-worry with you when you go on vacation? Carrying cash on a trip can be a constant source of anxiety. Protect yourself before you leave home by purchasing a supply of Travellers Cheques at the BANK OF MONTREAL. Their convenience and low-cost add a carefree bonus to your vacation. And, since prevention is the best protection against loss due to theft or fire while you're away, why not leave your valuables in the safest place in town — a Bank of Montreal Safety Deposit Box that costs but a few cents a day.

WHAT'LL IT BE TONIGHT?
Or for lunch? You'll have a host of zesty ideas if you keep a line-up of the delicious LIPTON SOUPS on your cupboard shelf as I do. Each flavor has a delight of its own. Lipton Chicken Noodle out-sells all others—it's so rich, yet delicate. Lipton Tomato Vegetable Soup is full-bodied and flavorful. Lipton Green Pea-mixed with cold water, remember!—has that spicy, "smoky" taste we all enjoy. And Lipton Onion Soup is a dream! Use them as soups—or in combinations with your casseroles, yes, even salads! (I'm thinking of how good two teaspoons of Lipton Onion Soup is tossed in a green salad!)

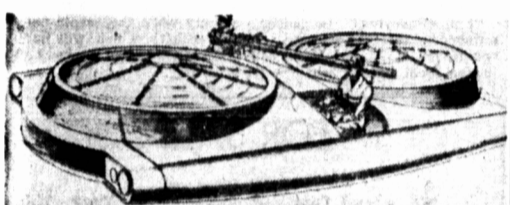
GATHER ROUND M'DEARS! I'VE A HOT-WEATHER RECIPE that is c-o-o-l to prepare, yet nourishing and satisfying for everyone—young and old! The principal ingredients of this fine main course casserole are two famed AYLMER PRODUCTS... Aylmer Boston Brown Beans and Aylmer Tomato Catsup. Read this—and try it—soon!

Baked Beans Cottage Style
1 35-oz. tin Aylmer Boston Brown Beans
4 tbsps. Aylmer Tomato Catsup
4 tbsps. finely chopped green pepper
1/4 tsp. dry mustard

Place the canned ingredients in a shallow casserole. Top with rolls of cheese slices halved and thick tomato slices. Bake at 375 deg. for 30 minutes. Makes 2 or 4 servings.

Won't you see for yourself how truly delicious this casserole is? Serve it with tossed greens or fruit salad. And for dessert, orange sherbet and ginger cookies! You'll find many other tantalizingly good ideas for serving these popular Aylmer products as you use them. I've some more coming, too!

DEAR YOUNG MOTHER! You've got lots of problems with that sweet baby of yours—but there's one that needn't trouble you. I'm talking about finding the right formula for your little one. The famed FARMER'S WIFE Milk Formulas have been created especially for babies. Your doctor will tell you which of the three types will suit your baby best. He may suggest Whole Milk (Red Label), Skimmed Milk (Yellow Label) or the Partly Skimmed Milk (Blue Label). This last, prepared at the request of pediatricians, is a high-protein, low-fat concentrate formula. All are Vitamin D increased and vacuum packed in the most modern type of milk container.

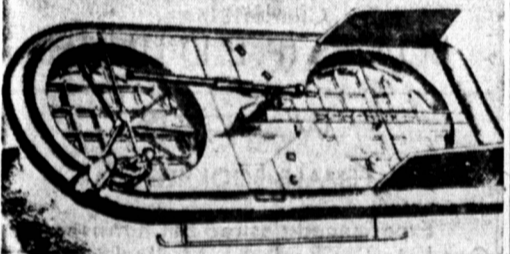
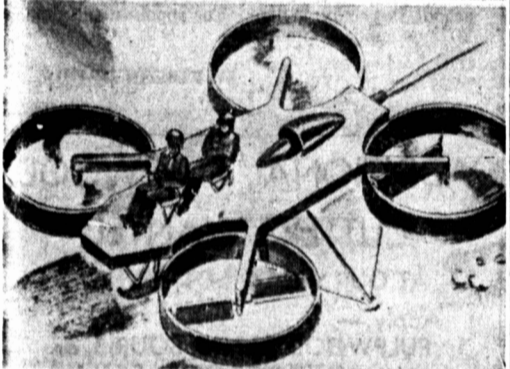


GIRL GUIDES

PACK HOLIDAY

14 Brownies of the 1st and 3rd St. Peters and St. James Brownie Pack together with two Brownies from the Souris Pack, arrived at Stanhope to commence what we believe is Charlotetown's first Brownie Camp. Under the leadership of Mrs. Don MacMillan, Brown Owl of the St. James Pack, Mrs. Claude Richards, Brown Owl of the Souris Pack, and Mrs. Ralph Dumont, Commissioner of Training, three wonderful days were spent together for a typical Brownie Pack holiday.

The sixers were Betsy Ives, Robin Six; Jane Larkin, Maple Leaf Six; and Dorothy Campbell, Honey Suckle Six. Sand Castle competition was won by Dorothy Campbell, and Judith Presby with Lynn Taylor and Heather Stewart winning for originality. Marquerade win-



BUILD INFANTRY AIR JEEPS

These artists sketches, released by the U.S. Army, portray three versions of an "aerial Jeep" the army hopes in development. Three firms have been awarded contracts for the design, construction and testing of flying research vehicles. Design at top was submitted by Chrysler Corporation, one at centre by Aero-Physics Development Corporation, and one at bottom by Piasecki Helicopter Corporation. The flight principle of all three designs is that the machine rises on a column of air formed by rotating blades in ducts.

ELMWOOD W.I.

The July meeting of Elmwood W.I. was held at the home of Mrs. Waldron MacPhee, with eight members and three visitors present.

The meeting opened by singing the Institute Ode, followed by the Collect. Roll call was answered with a recipe for a supper dish. Correspondence was read, and included the yearly grant from the government. Plans were made for holding a dance in the school. Mrs. Stanley Colwill was appointed to take charge of the programme at the August meeting.

Roll call at next meeting will be answered with a questionnaire concerning Institute work. Mrs. Cyril Egan invited members to meet at her home for the August meeting. Collection for the evening amounted to seventy-five cents.

The programme consisted of a two minute talk by Mrs. Wilfred Campbell concerning "sight seeing" in Toronto. A contest conducted by Mrs. Eugene McQuillan was won by Mrs. Wilfred Campbell.

The meeting closed by singing the "Queen," after which a dainty lunch was served by the hostess, assisted by Mrs. W. Paul, and Mrs. C. Egan.

CLIMBERS' FEE

Nepal charges mountain climbers an admission fee of \$630 to assault 29,029-foot Mount Everest.

ASK

YOUR GROCER FOR EASTPACK BRAND FRESH FROZEN

- COD
- HADDOCK
- MACKEREL

ATTENTION ADVERTISERS...

COPY DEADLINES AS FOLLOWS:

- Noon SATURDAY for TUESDAY'S Paper
- 5 p.m. MON. for WEDNESDAY'S Paper
- 5 p.m. TUESDAY for THURSDAY'S Paper
- 5 p.m. WEDNESDAY for FRIDAY'S Paper
- 5 p.m. THURSDAY for SATURDAY'S Paper
- 5 p.m. FRIDAY for MONDAY'S Paper

CLASSIFIED ADS

Classified, Classified Display, Coming Events, Central, Eastern and Western Guardian will be accepted daily on week days up to 5 p.m. for publication next day, Saturday 1 p.m.

THE GUARDIAN ADVERTISING DEPARTMENT

SAVE ON SALADS



SAVE ON SALADS WITH ECONOMICAL RICHMELLO SALAD DRESSING
16 OZ. BOTTLE 37c
32 OZ. BOTTLE 65c

FRUITS & VEGETABLES

- SWEET JUICY WATERMELON whole \$1.19 half 69c
- SWEET JUICY SUNKIST ORANGES 2 doz. cello 61c
- LOCAL GROWN WAX BEANS 2 lb. 39c
- FRESH DAILY LOCAL BUN BEETS 2 bun 23c

QUALITY MEATS!

- CHOICE ISLAND STEER BLADE ROAST lb. 49c
- MAPLE LEAF WIENERS 1 lb. cello 43c
- FRESH OR CORNED BEEF TONGUE lb. 39c
- MILD CURED BRISKET CORNED BEEF lb. 25c
- SWEET PICKLED PORK HOCKS lb. 33c

FEATURES AT DOMINION

- YORK CHOICE PRUNE PLUMS 2 15 OZ. TINS 31c
- HEINZ KETCHUP 2 11 OZ. BOTTLES 49c
- GRAVES CHOICE APPLE JUICE 48 OZ. TIN 29c
- A-B-C FANCY PINK SALMON 1/2 LB. TIN 29c
- PETER PAN STANDARD PEACHES 2 15 OZ. TINS 39c
- RALEIGH CORNED BEEF 12 OZ. TIN 29c

FROZEN FOODS

- EASTPACK COD FILLETS LB. PKG. 27c
- DOMINION ORANGE JUICE 2 6 OZ. TINS 35c
- BIRDS EYE FANCY GREEN PEAS 16 OZ. PKG. 28c
- BIRDS EYE FRENCH FRIED POTATOES 9 OZ. PKG. 22c

Everyday Low Prices

- HEINZ MUSTARD 6 OZ. BOTTLE 14c
- DOMINION PEANUT BUTTER 16 OZ. BOTTLE 35c
- D. S. L. TEA BAGS SIZE 100s PKG. 77c
- OPAL TOILETTISSUE 4 ROLLS 33c
- GREEN SPIC & SPAN LARGE PKG. 43c
- JAVEX 16 oz. btl. 17c

PURITAN ASSORTED MEAT SPREADS
3 3/4 OZ. TINS 31c

All Merchandise sold at your Dominion Store is Guaranteed to Give 100% Satisfaction.

"WE ARE SORRY"

Due to the overwhelming response for the Briar Rose Dinnerware, the manufacturer's production is behind schedule. We regret, therefore, that we are temporarily withdrawing this offer for four weeks to enable the manufacturer to produce sufficient quantities. THIS OFFER WILL AGAIN BE AVAILABLE TUESDAY, SEPTEMBER 3, 1957. (Cups and Saucers). Your co-operation is appreciated.

STORE HOURS
Monday, Tuesday, Wednesday, Thursday 8:30 to 6:00 p.m.
Friday, 8:30 to 9:30
Saturday 8:30 to 1 p.m.

VALUE EFFECTIVE THUR. - FRI. - SAT. AUG. 8 - 9 - 10 1957

Cut Food Costs at **DOMINION**
155 QUEEN STREET
DOMINION STORES LIMITED

ATTENTION HOG RAISERS
SPECIAL — FOR ONE WEEK ONLY — AUGUST 8th to 14th, INCLUSIVE
PURINA CHECK-R-MIX HOG GROWER
IN 10 BAG LOTS, or OVER \$3.25 per cwt.
CASH ONLY NO CHARGE ACCOUNTS
DILLON & SPILLET LIMITED,
CHARLOTTETOWN, P. E. I.