

FINANCIAL AID COLUMN

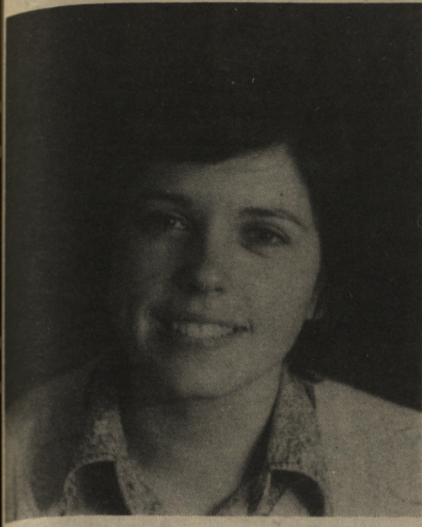
Financial Aid is located in Student Services, Main Building.

Following are a few awards you may be interested in.

NATIONAL INSTITUTE ON MENTAL RETARDATION
 Research study supplements are available to students enrolled in graduate studies at a Canadian University and planning a career directly in the field of Mental Retardation, or an associated professional field. In addition to the financial support the award provides the opportunity for attendance at a one week period of orientation training at a National Institute on Mental Retardation with prepaid tuition, training and living costs. Valued at \$1,000.00 per year for two years.
 DEADLINE APRIL 13, 1980

S.R. LAYCOCK BURSARY
 This bursary will be awarded on the understanding that the recipient accepts employment in Canada upon completion of his or her studies in the field of Health Education. Valued at \$500.00
 DEADLINE APRIL 30, 1980

HELEN HERRING SCHOLARSHIP
 The Helen Herring scholarship of \$500.00 will be awarded to a student from Prince Edward Island, who by September, is enrolled in the final year of a University program leading to a degree in Home Economics.
 DEADLINE APRIL 30, 1980



by Rita Pendergast
 We are getting closer to the end of this semester (only a few weeks left) and the last thing you are likely thinking about is finances for next Fall, if you will be continuing your education. Now is the time (nice and early) to come in and check out the possibilities for financial assistance.

My office hours are:
 MONDAY 2:00-5:00
 TUESDAY 2:00-5:00
 WEDNESDAY 2:00-5:00
 PLAN AHEAD

Lunchtime or Anytime

ENJOY A GREAT LUNCH OR JUST A CUP OF COFFEE AT THE

LUNCH BAR
 ON THE

3RD FLOOR OF THE BARN

JUST A SHORT WALK FROM ANY PLACE ON CAMPUS

SERVING EVERYTHING FROM SNACKS TO SANDWICHES TO

FULL HOT MEALS.

HOME-MADE SOUP EVERY DAY.

HOT AND COLD LUNCHES.

FEATURING SPECIALS THREE TIMES WEEKLY.

Mon. Wed. Fri.

DROP IN FOR SOME GOOD FOOD AT GOOD PRICES

OPEN 9:00 a.m. - 2:00 p.m. EVERY DAY

SPRING CO-ED

THE ANNUAL SPRING CO-ED
 SPONSORED THIS YEAR BY
 THE SENIOR CLASS
 ADMISSION
 \$7.00 PER COUPLE

TICKETS AVAILABLE IN
 THE BARN, IN THE ALUMNI
 OFFICE, AND IN ROOM 417
 BERNADINE HALL.

Thursday, March 27

AT THE

Charlottetown Hotel

MUSIC BY

Touch and Gone



CIMN

THESE PEOPLE
 ALONG WITH THE
 'TO SHY TO BE PHOTOGRAPHED'

HENRY DEPUNKDA
 WILL SUPPLY THE MUSIC
 FOR THE DANCE-A-THON



STARTING
 THIS THURSDAY AT 6
 STAY TUNED