

Chrysler Production To Be Cut

DETROIT (AP) — Chrysler Corporation announced a reduction in its auto production for June. It thus followed the lead of General Motors and Ford, which previously trimmed their car-building schedules for May.

Chrysler said its car assembly plants at Newark, Del., and Los Angeles would suspend operations for four days, beginning May 31.

It said all other Chrysler auto and truck plants would work five-day weeks in June and that output was scheduled at 136,000 cars. That still would be better than 1,500 units ahead of June, 1965.

Chrysler's original announcement gave no reason for the slowdown in the auto production pace, but both Ford and General Motors said earlier their cuts were aimed at production in line with field inventories.

WOULD BE HIGHEST

Ford announced Monday that it had trimmed 19,000 cars from its planned May schedules. Even with the cuts, the month's quota remained at 242,000 units which, if attained, would be the highest May output in Ford's history.

Ford said it would accomplish the reduction by eliminating Saturday, overtime work planned at various plants. It said all Ford production workers would be on at least a five-day week and that some overtime would be used.

General Motors reduced production at four of its 23 assembly plants last week, eliminating an estimated 10,000 cars from its projected car output.

GM said eight other plants would be on curtailed operations ranging from one to three days in the remainder of May.

A spokesman for Chrysler Canada Ltd. in Windsor said the company will not reduce scheduled production in Canada.

"We are not planning any cut-back here," he said, "our program will continue as planned." Chrysler Canada had produced 61,199 cars in 1966 up to the end of April, compared to 30,302 for the same period in 1965.

TV Color Given Okay

OTTAWA (CP) — Approval for another string of applications for color television facilities was announced here by the Board of Broadcast Governors.

CFMT-TV Montreal was approved for full color facilities, including cameras for local production, color videotape and film facilities and equipment to receive network color programs.

CJCH-TV Halifax, CFQC-TV Saskatoon and CJBR-TV Riverview-Loup, Que., were approved for full but color equipment for local program production.

CFCTV-TV Regina and CKMJ-TV Moose Jaw were approved for equipment to bring in network color and to show color film.

The following stations received approval for handling network color: CJCB-TV Sydney, N.S., CKRT-TV Riverview-Loup, Que., CKWS-TV Kingston, Ont., CHEX-TV Peterborough, Ont., CFCL-TV Timmins, Ont., CHG-TV Sault Ste. Marie, Ont., CKOS-TV Yorkton, Sask., and CHAT-TV Medicine Hat.

Trial color telecasts begin this July 1 with the official debut of color programming set for next Jan. 1.

CMA President Gives Views On Medicare

TORONTO (CP) — The president of the Canadian Medical Association said here, Canada may be better served by a federal health plan which supplies drugs and comprehensive medical care to the poor rather than physicians' services to everyone.

Dr. R. O. Jones, of Halifax told the annual meeting of the Ontario Medical Association that the CMA was rudely jolted by the government's announcement last July of a plan for physicians' services after it was felt a high degree of agreement had been reached for collaboration between the two parties in June.

"This sudden change of events led me to suggest that my year in office could best be described as that which marked the end of political innocence."

He said doctors are concerned a centralized plan will create over-work and bureaucracy which will discourage high quality recruits from joining the profession.

They also fear standards will drop when medical services begin competing for government money and that such a plan will freeze patterns of medical practices.

Dr. Jones said the profession expects to be consulted in the planning stage about legislation will ask for cautious introduction of the plan with innovations introduced gradually.

GETS PLANNING POST

OTTAWA (CP) — Robert M. Leary, of Ithaca, N.Y., a former planner for the Washington national capital region, has been appointed assistant general manager of the national capital commission's planning and design branch, it was announced Wednesday. He is to start work here July 1.

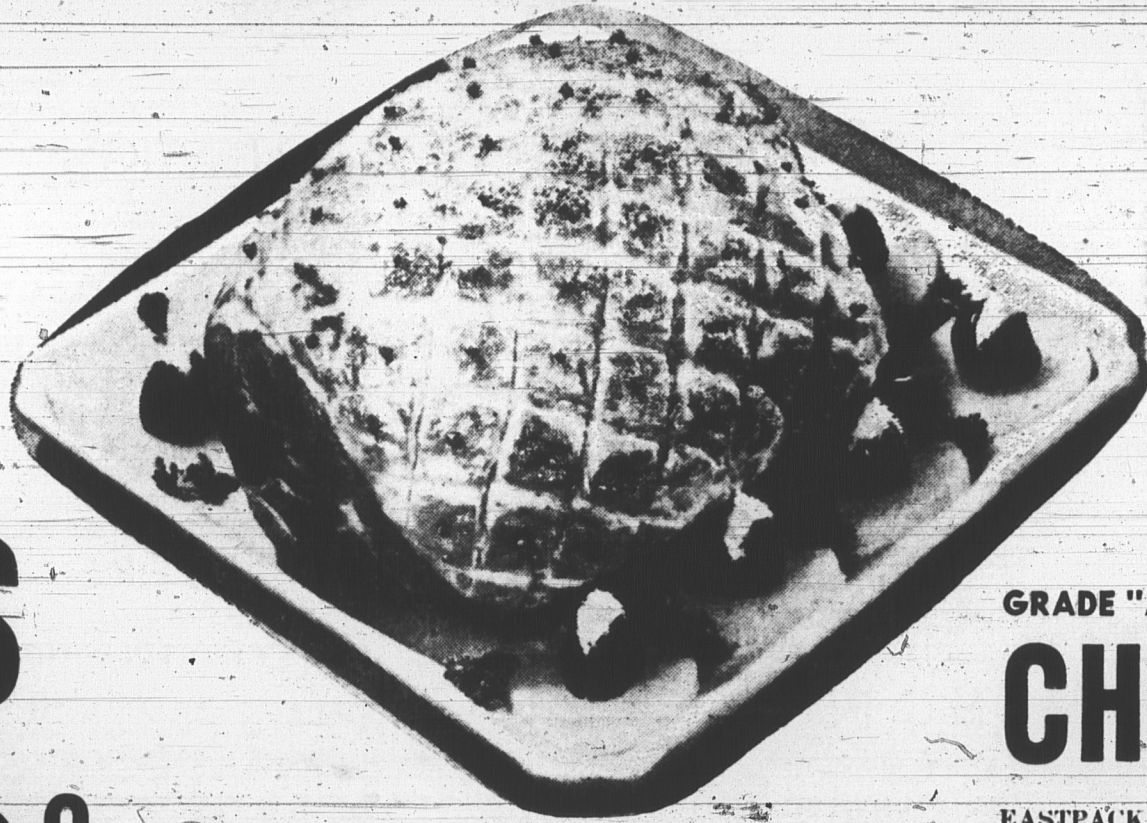


Special
Prices
Effective
'Til Closing Time
Sat., May 14th

...CHUTES THE WORKS!

P.E.I. SKINLESS SHOULDER ROASTING

PORK 49^C LB.

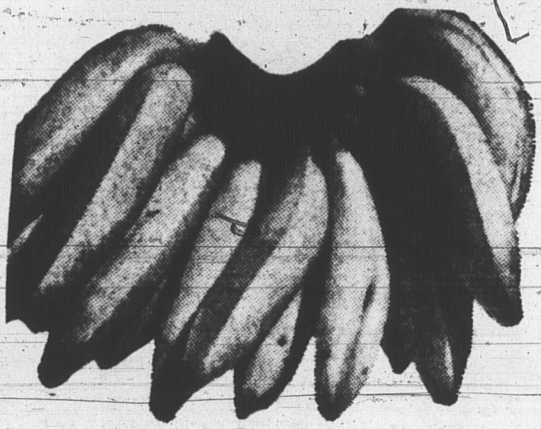


- REAL LEAN PORK STEAK 1 LB. 59^C
- MAPLE LEAF RINDLESS BACON 1 LB. PKG. 79^C
- D AND F PURE PORK SAUSAGE 1 LB. PKG. 63^C

GRADE "A" OVEN READY BROILERS CHICKEN 43^C LB.

- EASTPACK MACKEREL FILLETS 1 LB. PKG. 33^C
- FROZO FRENCH FRIES 2 LB. PKG. 49^C
- PERFECTION ICE CREAM PT. BRICK 33^C

GOLDEN RIPE BANANAS 19^C LB.

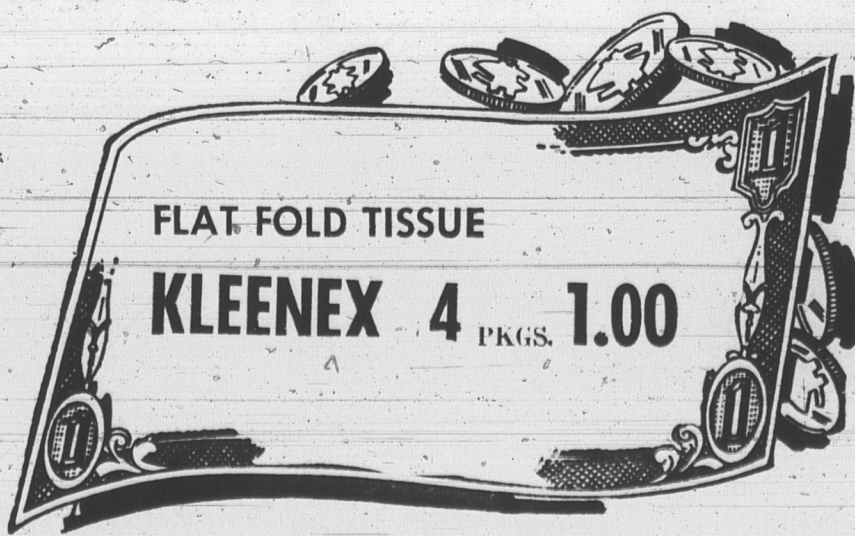


FIRM, RIPE TOMATOES 29^C CELC TUBE

- BALDWIN APPLES 5 LBS. 59^C
- LARGE ICEBERG LETTUCE HEAD 29^C

VOGUE TOILET TISSUE 8 ROLLS 69^C

MARVEN'S PLAIN OR SALTED SODAS 1 LB. PKG. 35^C



SANITARY NAPKINS KOTEX 2 PKGS. 89^C

PROCTER & GAMBLE SPIC & SPAN GIANT SIZE 89^C

ALLEN'S DRINKS 48 OZ. TIN 29^C

CANADA PACKERS KAM 12 OZ. TIN 53^C

OLD HOMESTEAD RASP. OR STRAW. JAM 24 OZ. JAR 53^C

MORSES TEA BAGS 60's Gauze 89^C

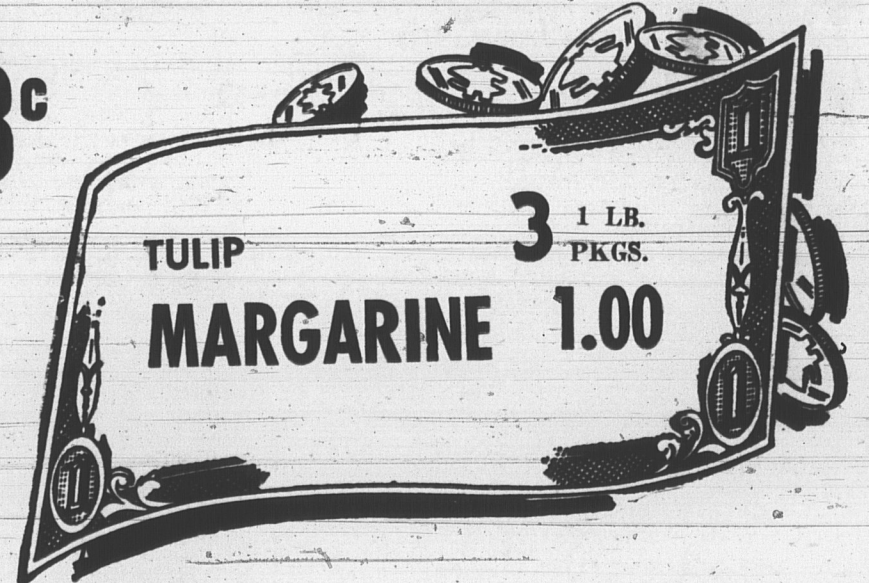
WILLARDS CANDY Willowcrisp 1 LB. 53^C



HEINZ SWEET MIXEE PICKLES Large 32 OZ. BOT. 53^C

NABISCO SHREDDIES 18 OZ. PKG. 39^C

KLEENEX PAPER TOWELS 2 ROLLS 49^C



BEE HIVE CORN SYRUP 3 2 LB. TINS 1.00

KELLOGG'S APPLE JACKS THEY ARE NEW! 7 OZ. PKG. 35^C 10 OZ. PKG. 45^C

CLOVER FARM WAXED PAPER 100 FT. ROLL 33^C

CHUM DOG FOOD 2 15 OZ. TINS 27^C

CLOVER FARM TOMATOES 28 OZ. TIN 35^C

HALO HAIR SPRAY 11 OZ. TIN 89^C