

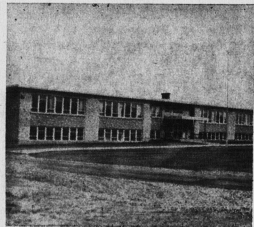
THE SHAW GOVERNMENT

The Record and the Future

The Shaw Government is proud of its record, but is not content to rest on that. The Shaw Government has dynamic plans for the future to ensure the continuing prosperity of Prince Edward Island and the well-being of all Islanders

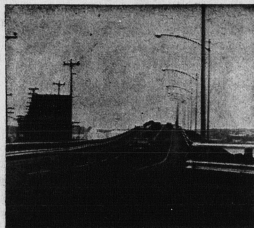
The Record in Education

Your Government contributed \$2,000,000 in teachers' supplements in 1962, more than twice as much as during the last year of the previous administration. At the end of June, 1962, there were 231 teachers who were classed as "superior"—equivalent to degree holding. In the last year of the previous administration there were only 99 "superior" teachers.



Regional High School

The Shaw Government promised a new deal in education for young Islanders. This is just the beginning; your Government has more plans for the children of Prince Edward Island.



Bridge Construction

The Record in Roads and Public Works

The Shaw Government has paved 402 miles of road in three years. In the previous twenty-five years only 358 miles were paved. The Roads to Resources paving program, jointly financed by your Government and Ottawa, has three more years to run. The goal here is at least 100 miles of new paved road each year.

Fourteen new, Regional High Schools have been built during the first term of the Conservative Government. A new vocational school has been built in Summerside. A technical training school is under way in Charlottetown. The Sherwood Hospital for retarded children was opened this year.

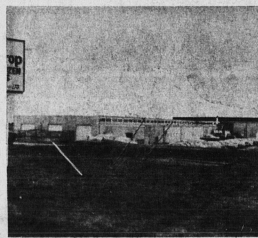
This is the record of your Shaw Government—a record of building, of developing, of progress for Prince Edward Island.

The Record in the Tourist Industry

Your Shaw Government has doubled the revenue of our Tourist Industry in three years. Visitors to the Island this past season totalled 253,000, an increase over the previous year of more than 9 per cent.

Twenty-three parks, camp-sites and picnic areas have been established in areas from Tignish to East Point for the enjoyment of visitors and Islanders alike.

Your Government has initiated tourist loans to assist the operators of tourist resorts in expanding and developing their facilities.



Seaman Frozen Food Plant, New Annan

The Record in Industrial Development and Fisheries

The greatest monument to the aggressive program of Industrial Development undertaken by your Shaw Government is the Seaman Brothers \$1,000,000 frozen food processing plant at New Annan.

Assistance has been given to the Alberton boat works, the Enamel and Heating Products Co., the Arnold Brick Co., and numerous smaller enterprises. Industrial loans have made it possible for Island businessmen to undertake new projects.

The Record in Health

Your Shaw Government has made available free insulin treatment to every diabetic in the province. Great strides have been made in the care and treatment of mental illness. New treatment methods, expanded facilities and a larger staff are available today at the Riverside Hospital.

The Record in Agriculture



Tobacco Growing

Your Shaw Government has provided freight assistance on livestock entering the province

for breeding purposes. A programme of control and prevention of contagious disease in the potato industry has greatly reduced infection through Bacterial Ring Rot. The tobacco industry has been expanded to the point where a major tobacco company is considering the establishment of a plant here for purposes of early processing.



Sherwood Hospital

The Record in Welfare

Your Shaw Government has not neglected the special needs of the less fortunate citizens of Prince Edward Island. Social assistance has more than doubled in the past three years in blind persons' allowances, old age assistance and disabled persons allowances. A housing program for elderly people has been embarked on by your Shaw Government.

Good Government Today...
...for a Better Tomorrow!

The Hospital Care Program

On December 10th, when the Shaw Government is returned to office, every family on the Island will gain by \$48! Your government intends to abolish the hospital premiums and pay for this care out of general revenue. The Shaw Government inherited this clumsy and unfair premium system and at the core of this election is the decision of all Islanders on the question: Do we carry on with premiums or do we abolish them?

Industrial Development

All Prince Edward Island has hailed the announcement of the new \$1,000,000 frozen food plant which will be built in the Montague area of Kings County. Mayor Bruce H. Yeo described it as "the answer to his favourite dream".

Negotiations are going on with other companies as part of your Shaw Government's aggressive program of industrial expansion. Some favourable news is anticipated soon concerning a food processing plant for the Western part of Prince County.



The Signing of the New Plant Agreement
Charlottetown, Nov. 23, 1962.

Re-elect your Shaw Government!