

ATTENTION

LIVESTOCK SHIPPERS AND PRODUCERS

We shall be receiving livestock at our stock pens ALL DAY MONDAY, MAY 18th.

CANADA PACKERS LTD.

Grafton St. Charlottetown

"Na-Churs" Liquid Fertilizer boosts yield

POTATO GROWER GETS 33 bbl. INCREASE

GROWERS REPORT INCREASED YIELD AND BETTER GROWTH FROM LEAF FEEDING with "Na-Churs" Liquid Fertilizer

Albert Cote of Grand Falls, N. B., sprayed his potatoes with "Na-Churs" at 1 1/2 gallons per acre, three times and he writes: "I obtained 163 barrels on the sprayed part as compared to 130 on the unsprayed. I could see a difference in 10 days after spraying. The potatoes matured earlier and had greater resistance to drought and wind damage."

Other Leading Growers Write

- "I used 'Na-Churs' on ten acres of potatoes and obtained an increase of 40 bushels an acre." G. H. Brookins, Kensington, P. E. I.
- "The quality, the size and maturity are far superior to the unsprayed portion. The yield was 16 barrels to the acre more. I will be using 'Na-Churs' fertilizer on all my crop the coming year." Donald Hallett, Hartland, N. B.
- "I noticed faster growth and increased yield of 57 bushels an acre." E. D. Reid, Charlottetown, P. E. I.
- "When I dug the potatoes this fall, I had 28 barrels (76 bushels) to the acre more on the 'Na-Churs' sprayed compared to the unsprayed part of my crop. You can see it pays to use 'Na-Churs'." Cecil Hansen, Victoria County, N. B.

"Na-Churs" is also used on Grain, Hay, Pasture, Orchards, etc.

Get Complete Details On

This Proven, Profitable Supplementary Spray From —

- Simmons & McFarlane, Summerside
- Geo. Brookins & Son, P. E. I. Kensington
- E. B. Reid Produce, Charlottetown
- H. B. Willis, Inc., P. E. I. Charlottetown
- Ernest Gillis, P. E. I. Tignish

"INSULATE as you plaster" WITH MICAFIL



The new lightweight mineral aggregate! Architects, Plasterers, Contractors and House owners who have tested MICAFIL all say it is:

- easier to handle — because weighs only 8 lbs. per cubic foot.
 - lasts longer — does not absorb moisture, dries without warping or buckling, does not crack, dissolve, disintegrate or rot.
 - affords greater protection — against sub-zero cold or intense heat, against fire hazards, favours low insurance rates.
- Replaces sand in modern gypsum plastering construction. See your BISCO Dealer or contractor today!

Manufacturers of ASPHALT SHINGLES & SIDINGS, ROLL ROOFINGS, SHEATHINGS & FELTS, BUILT-UP ROOFING MATERIALS, "BISCO" WALLBOARDS, PLASTIC CEMENTS & WATERPROOF PAINTS, ROOF COATINGS, "FLEECE LINE" ROCK WOOL INSULATION, "MICAFIL" Aggregates for Plaster, Concrete and Insulation.

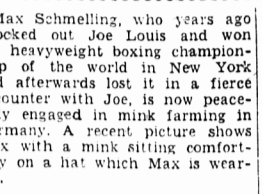


BISHOP ASPHALT PAPERS LTD. Plants at PORTNEUF STATION, P.O., TORONTO and LONDON, ONT. Warehouses and Branches: QUEBEC, P.Q., MONTREAL, P.Q., TORONTO, ONT.

ROGERS HARDWARE CO. LTD. Queen St. Phone 105

FENNELL & CHANDLER LTD. 155 Queen St. Phones 87 - 88

TIMELY NOTES ON TOPICS CONNECTED WITH Silver Fox And Mink Farming

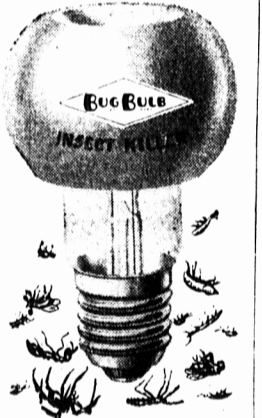


Max Schmelling, who years ago knocked out Joe Louis and won the heavyweight boxing championship of the world in New York and afterwards lost it in a fierce encounter with Joe, is now peacefully engaged in mink farming in Germany. A recent picture shows Max with a mink sitting comfortably on a hat which Max is wearing.

The winding up sale of EMBA dressed mink mutations by the New York Auction Company last week showed a most successful venue. The 13,326 Silverblu Platins were 99 per cent sold at an advance of 20 per cent over February levels. The top price in the Silverblu Platins was \$45 for males and \$22.50 for females. A total of 1139 Stewart Silverblu Platins was reported 100 per cent sold at a top price for males of \$57 and a top of \$25.50 for females. Some 2973 Breath of Spring Silverblus were also 100 per cent sold at a \$67. top for males and \$27.50 for females. Silverblu Platins dressed put on one of the strongest showings of the week with an excellent turnover and eager demand. In the dressed Silverblu Platins 84 per cent of the offering brought \$25 and up. The heaviest cluster was the \$25 to \$30 bracket which accounted for 35 per cent of the sale; 29 per cent of the sale brought from \$30 to \$35 and 20 per cent from \$35 and up. The general opinion of the buyers in the sales room was that the quality of this offering was considerably above that of the February collection.

Last week we had an article on the future outlook for mink and the author was quite a bit pessimistic. Another article on the same subject appeared in Women's Wear Daily recently and it was written by Leo Ritter of Ritter Bros, leading high fashion manufacturing firm. Mr. Ritter urges the mink ranchers to control the production of poor pelts as one means of suppressing the re-appearance of the split-skin business. In addition he recommends that manufacturers of other furs get cracking and glamourise your products. Take a leaf out of the mink men," he advises other manufacturers. "I am sure there is room for all furs in their proper place."

Another writer on the same subject is Maurice Cantor, Presi-



At all leading stores \$4.98 with tablets Or write G. H. IMPORT CO. 1275 Iberville St. — Montreal Tel. CH. 6452 - 3001

Did You Know This—

New Packard CLIPPER 4-Door Sedan ONLY \$3441* F. O. B. WINDSOR, ONT.

*Optional equipment and white sidewall tire extra.

Everywhere you go... in homes, in club meetings, all around town... you hear people say: "Who'd a thought you could buy a Packard Clipper for as little as that?" Who would have, at that! For this news-making car is a national favorite right now! That's because the value's there: big car ride, big car comfort, big car stability... all the things that add up to what you want for yourself and your family in today's traffic. Won't you come in today?

MARTIN'S GARAGE 256 Queen St. Phone 440

-NEWSY NOTES-

By J. A. Clark, D.Sc. THE SUNSET ROUTE

The Sunset Route from New Orleans to Los Angeles was the second transcontinental railroad built in America. It was completed January 12th, 1883. The first railroad to cross the continent was known as the Overland Route, from New York via Chicago to San Francisco. The Canadian Pacific Railroad, completed in 1885, was the third transcontinental. The Sunset Route passes through Louisiana, Texas, New Mexico, Arizona and California, a distance of 2070 miles. It reaches an elevation of 5,074 feet above sea level at Paisano, Texas, and drops to 202 feet below sea level at Salton, California.

nor the festooned cypress trees and the typical plants of the swamps, bayous and lowlands; nor the sugar mills that dot the skyline of the famed "Sugar Bowl," from Lafourchette to New Iberia. It was at New Iberia, on the banks of Bayou Teche, that the Acadians mentioned in Longfellow's "Evangeline" settled, and their descendants, known locally as "Cajuns," now form 80 per cent of the population. The sugar area ends near Rayne and the rice belt begins at Crowley, the present seat of the Acadia Parish. It has 13 rice mills and is nicknamed "Rice City."

We left New Orleans after midnight and did not see the Mississippi River Levee near Avondale, strongly on developing new colors and new shades. I fear, if this happens, we may be faced with a serious problem in matching skins for full length garments. It is believed that fur should be pushed at the retail level as a form of self-protection against any sharp slump in mink.

We had passed while we slept, four oil fields in Louisiana and four in Texas adjacent to the Gulf of Mexico and near the Sunset Route. These supply most of what is known to the trade as Gulf oil. We stopped 15 minutes at Houston, a great railroad centre, which is also connected with the Gulf of Mexico through the Houston Ship channel, a 50 mile waterway that allows ocean going

Continued on page 16

ANNUAL MEETING

P. E. I. Jersey Breeders will hold their annual meeting Saturday, May 16, 8 P. M. at the Exhibition Office, in Charlottetown.

PLANT A HEDGE

Rosa Multiflora "Nature's Hedge of Hardy Roses", 18 inch size, 25 for \$2.98, or \$7.95 per 100. Green Barberry—For a low thorny hedge—brilliant red in Fall, 9 inch, 100 for \$6.95; 12 inch, 25 for \$8.98, or \$15.00 per 100. Peony Roots — exhibition varieties, red, white or pink—3 for \$1.89. Pear Trees, 5 ft. size—sailing varieties, Bartlett or Clapp's Favourite, 2 for \$2.98. Free with Every Order Canada's Finest Colored Garden Guide. Brookdale-Kingsway Nurseries, Bowmanville, Ontario.

Still another authority writing on the mink era is J. D. Silberman, a former president of the American Fur Merchants Association. Mr. Silberman views the future de-emphasis of mink as stemming from two sources: The first, from the consumer; the second, from within the fur industry itself. His first point is this: "The history of all articles in women's styles has been that they reign supreme as long as the quantities are limited and every woman doesn't meet her own garment. Any married man knows that his wife hates to pay a high price for a dress that many of her friends appear in, and which is copied down in price. This is now occurring in mink."

Mr. Silberman's second point is: There is now a very low turnover profit to all engaged in the mink business. When an entire trade finds that an article is no longer profitable to handle, the article is forced out of style. It is my belief that we have now reached the stage where very few people are able to show any real profit at the end of the year if they restrict their items to mink. On the basis of these two conditions, Mr. Silberman predicts that in the very near future influential couturiers will start pushing other furs.

We have given a resume of these various articles on the Mink Era for the benefit of the mink breeders who read this page weekly and endeavor to secure from it the latest available information on that fur. It would appear from the above interviews that a certain amount of caution will have to be exercised by those who continue to breed mink and expect it to be raised on a profitable basis. So far I believe all our ranchers have made money but to continue doing so a lot of thought and good ranch care will have to be exercised so that the right types are bred, poorer qualities eliminated, good breeding methods used, plenty of water available and clean nest boxes are a MUST in order to have fine quality pelts.

FISHERMEN WE NOW HAVE KERMATH - MARINE ENGINES IN STOCK AT OUR MALPEQUE ROAD SHOWROOM A. PICKARD MACHINERY LTD.

For Cecal and Intestinal COCCIDIOSIS **SULMET*** SODIUM SULFAMETHAZINE POULTRY DRINKING WATER SOLUTION 12.5% Lederle CUTS MORTALITY QUICKLY AVOIDS STUNTING - SAVES LABOR ECONOMICAL **REDDIN BROS.**

SHAW CONCRETE SEWER PIPE For town-sewers, highway construction and building drainage. SHAW "New Process" Concrete Pipe will give better service and longer life. It meets all A. S. T. M. requirements, and the new "Packer-Head" process, besides ensuring alignment, imparts to the pipe significant additional strength. Send for free illustrated folder. **L. E. SHAW LTD.** HALIFAX, N. S. Plants at: Lunenburg, Glasgow, Sydney, Fredericton, Saint John, Chipman.

FOR SALE: \$250 crop land for \$50 an acre! **LOCATION: In your woodlot, bottom ground, washes!**



Do you have land that's practically worthless because of scrub growth, swamp, or washes? This farmer had. A brush-filled ditch made 9 acres of land absolutely worthless. 10' deep, 20' wide, and 700' long, it covered 4 acres and cut off another 5 acres that couldn't be reached for farming. Today, this land is Grade A farmland. A "Caterpillar" Diesel Tractor with Bulldozer filled in the ditch. Cost? About \$50 an acre. Do you have gullies... trees... brush... swamps... that cut your crop acreages and production? Clean 'em up with a "Cat" Diesel Tractor! Dig out hedgerows... straighten creeks... level land... 'doze out trees.

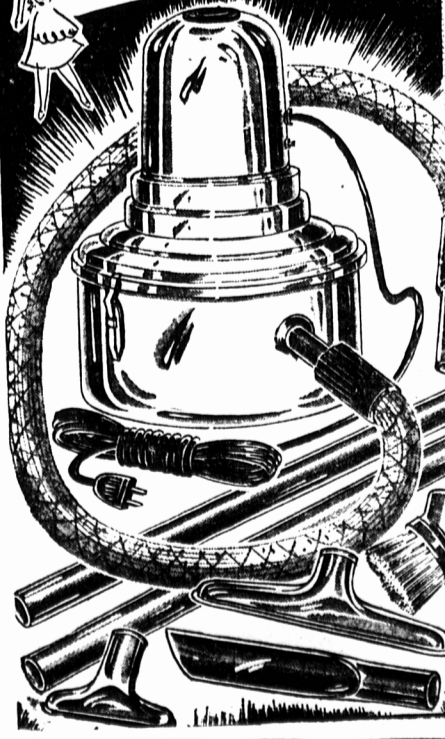
YOUR "CATERPILLAR" DEALER A. PICKARD MACHINERY LTD. MALPEQUE ROAD

And after the land is cleared, you'll have the tops in heavy-duty farm power to plow your fields... cultivate and harvest your crops. 5 sizes from 32 to 130 drawbar horsepower. See us today for more information.

I WANT MORE INFORMATION... I farm _____ acres. Name _____ Address _____

Buying Scrap Iron Brass, Copper, Batteries, Lead, Car Radiators. Also Lobster Rope Also For Sale used Boiler Tubings, all sizes Scrap Yard Charlottetown Auto Salvage, Grafton St. East. Phone 768 or 1310 P. O. Box 403 **ABIE BLOCK**

This Coupon is Worth \$10.00 ON THIS CANNISTER VACUUM I would like a Free Home Demonstration of this Brand New Vacuum. NAME _____ ADDRESS _____ STATE VACUUM STORES LIMITED 157 Grafton St., Charlottetown



CLIP THIS COUPON BRAND NEW CANNISTER VACUUMS NO MESSY DUST BAG TO EMPTY!

ONLY 13.95 With Coupon Complete with 7 ATTACHMENTS!

STATE VACUUM STORES LIMITED PHONE FOR Free HOME DEMONSTRATION TODAY! **2268** 157 GRAFTON ST., CHARLOTTETOWN