

**Steel Imports
Cause Concern
To U.S. Mills**

NEW YORK (AP)—The U.S. steel industry plucked by a scarcity of orders and price troubles, was emboldened Wednesday in an argument over foreign imports into its shaky home markets.

At issue is whether, as some steelmakers contend, metal from overseas mills is being "dumped" in the U.S.—that is, sold at below economic prices.

In Washington, a customs bureau spokesman said a company he would not identify formally complained in May that steel wire mesh from Belgium and France had been sold in the United States at below fair prices. He said the complaints have concerned the domestic industry in recent years, particularly those of reinforcing bars for construction, pipe and wire products.

GAP WIDENED IN 1961
In 1961, the gap between imports and sales of domestic steel overseas widened to 1,300,000 tons and this year to reach 2,000,000 tons. Before 1959, the U.S. consistently was a net exporter of steel, usually by a wide margin.

As applied by the customs bureau, present statutes generally are construed to prohibit sale of foreign-made steel in the U.S. at prices below those charged in the country of manufacture.

There have been widespread reports that foreign-made steel was selling at below U.S. prices. In recent months, some overseas firms have undertaken domestic companies on government steel business.

In 1961, Belgium and Luxembourg producers combined led in sales from abroad to U.S. customers, followed by Japan and West Germany.

**British Lead
As Immigrants**

OTTAWA (CP)—For the first time since 1958, Britons replaced Italians as the main source of immigrants to Canada in the first six months of this year, the immigration department reported Wednesday.

During the six months 6,963 immigrants arrived in Canada from Britain, an increase of 786 compared with the corresponding period last year.

Italian immigrants totalled 6,618, down from 7,314 in the first half of 1961.

Immigrants from Italy were the main source of newcomers in 1958, 1959, 1960 and 1961. Prior to 1958, British arrivals headed the list of immigrants.

Total immigration in the first six months of 1962 was 34,061, down from 36,782 in the January-June period last year.

**Lumbermen
Oppose U.S.
Import Cut**

OTTAWA (CP)—The Canadian Lumbermen's Association said Wednesday there is no evidence which can possibly be presented by United States lumber producers that would justify restrictions "of any kind" on Canadian softwood exports to the U.S.

In a prepared statement, the association, representing a large majority of the Canadian lumber industry, said: "We are not begging the Americans to allow us to sell lumber to them and in fact, most Americans would not want to place us in that position."

"Their experts tell us they need our lumber and will continue to need it."

"We can supply the best at the best price and as the top customer of the U.S.A. we have a right to ask that we be allowed to continue selling lumber at the present rate of production, and even at an accelerated tempo, if this is necessary to satisfy American demand for lumber and wood products."

ASKS COOL-OFF PERIOD
The association called for an immediate imposition of a cooling-off period in the Canada-U.S. lumber dispute.

The statement said Canada does not export enough lumber to the U.S. to fill the gap between American production capabilities and the American consumption rate.

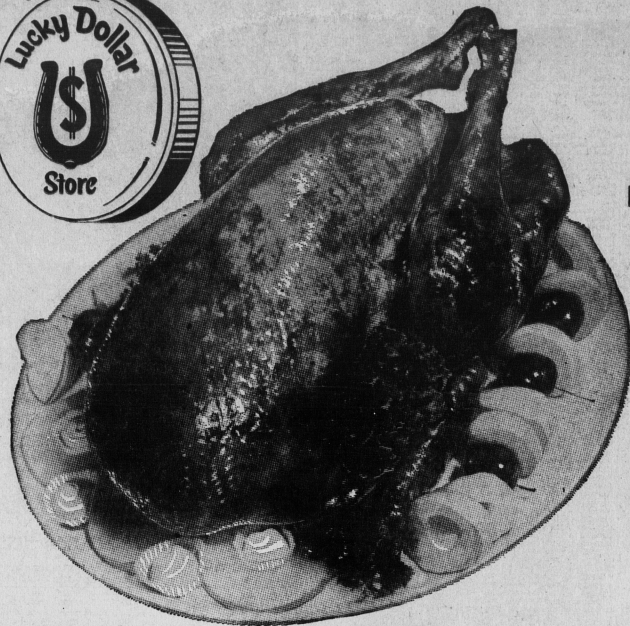
"If one looks at the figures issued by the American department of commerce for any year since 1950, it will be easy to realize that Canadian imports could not possibly have put people out of work."

"In general the 3,500,000,000 feet of lumber which Canada exports to the U.S.A. comprises approximately 10 per cent of the total American consumption. In fact, the increase in Canadian exports about which the complaints are being raised amounts to approximately three per cent of the total American consumption."

SPIDER TRAVELS
VIRIDEN, Man. (CP)—A 14-cent spider, native of the southwestern United States and Central America, was found by trucker Cecil Coleman after he unloaded a shipment of bananas from his van here.

SALE DATES
THUR. FRI. & SAT.

LOOK TO LUCKY DOLLAR FOR TASTY TREATS



PLUMP OVER READY

GRADE B

TURKEYS

49^C LB.



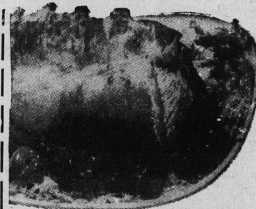
**JUICE
CLAMS**

AVON
APPLE
JUICE
48 OZ.
TIN

GEISHA
BABY
CLAMS

3 99^C

TINS
FOR
SPECIAL
PRICE



LOIN ROAST END Lb. **69^C**
PORK CHOPS Lb. **79^C**

ROSE STRAWBERRY
BIG 24 OZ. JAR
JAM 45^C

BARBOUR'S 16 OZ.
PEANUT BUTTER
43^C

HAMILTON'S
KO LARGE KO SIZE
ROONS
49^C

HEINZ KRINKLE
PICKLES
4 16 OZ. JARS
99^C

PERFECTION MILK 6 CANS FOR **89^C**

PEARS AVON 20 OZ. TIN 2 FOR **43^C**
KRAFT DINNER 2 FOR **33^C**

COCOA DUCHESS 1 L.B. **43^C**
NESCAFE 2 OZ. COFFEE **39^C**
KETCHUP 2 HEINZ 11 OZ. **49^C**

WILLO CRISP CANDY **49^C lb.**

JOHNSTON CLEAR 1 L.B. PASTE WAX **59^C**
BUDGET 100 FOOT WAX PAPER 2 FOR **59^C**

WHITE SWAN TISSUE 4 pac. **49^C**
FAB BIG GIANT SIZE **69^C**

COTTAGE ROLLS SWEET PICKLED ROLLS Lb. **69^C**

BACON SLAB BACON BY THE PIECE Lb. **69^C**

SCALLOPS Lb. **59^C**

BOLOGNA SLICED OR BY THE PIECE Lb. **35^C**

TWINKLE CAKE MIX 2 WHITE OR CHOC. **39^C**

FIRM GOLDEN RIPE BANANAS
2 LBS. FOR ONLY **39^C**

GRAPEFRUIT WHITE 3 FOR **27^C**

CELERY EACH **21^C**

CUKES 2 FOR **25^C**

FRESH ISLAND BEETS 2 BUNCHES **23^C**

