

JOHNSTON MOTORS LIMITED

Dodge & DeSoto Dealer -- Ferguson Tractors -- Sales & Service

MURRAY RIVER, P. E. I. -- PHONE 1-3

New 1953 Cars & Trucks In Stock

- One CRUSADER SEDAN, Coronation Blue (Metallic)
 - One REGENT SEDAN, Two-Tone, Blue.
 - One CORONET SEDAN, Miami Green (Metallic)
 - Four 1/2-Ton Expresses, Maroon, Blue & Green.
 - One 2-Ton Chassis and Cab, 152" W.B.
 - One 3-Ton Special, Chassis and Cab, 152" W.B.
- (All above units complete with Heaters, also winterized, etc.)

ARRIVING SOON: Further supply of 1953 DODGE & DESOTO CARS, DODGE TRUCKS.

PLACE YOUR ORDER NOW
Liberal Trade-in Allowance, and Easy Terms Arranged.

- ALSO FOR 1953 WE HAVE:—
- CRUSADER—Sedan and Suburban.
 - REGENT—Sedan, Club Coupe, Mayfair & Savoy
 - CORONET—Sedan, Special Hard Top Club Coupe, Convertible Coupe, and Club Coupe.
 - DESOTO POWERMASTER 6—Sedan, Sportsman and Club Coupe.
 - DESOTO FIREDOME V-8 —Sedan, Sportsman, Convert. Club Coupe.

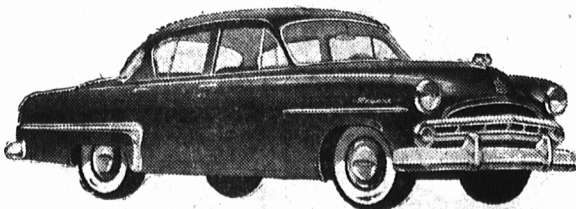
TRUCKS AS; DH SERIES—
1/2 Ton, 3/4-1 Ton, 2 Ton, 3 Ton and 3 Ton Specials in Chassis with Flat Face Cowl, Chassis and Cab. Also Express and Panels in 1/2 ton Series.

Christmas Suggestions

- | | |
|------------------------|--------------------------|
| RADIOS | SPOTLIGHTS |
| CAR ROBES | EXHAUST PIPE EXTENSIONS |
| SUN MASTERS | ACCELERATOR PEDAL PADS |
| WINDSHIELD WASHERS | ARM REST COVERS |
| FOG LAMPS | GLOVE COMPARTMENT LIGHTS |
| DRIVING LAMPS | TRUNK COMPARTMENT LIGHTS |
| WHEEL COVERS | MAP LIGHTS |
| Fuel-Tank LOCKING CAPS | DOOR HANDLE GUARDS |
| HAND BRAKE ALARMS | ELECTRIC DEFROSTERS |
| LICENSE TRIM FRAMES | WINDOW VENT SHADES |
| BACK UP LIGHTS | TRAFFIC LIGHT FINDERS |
| SCUFF MATS | UMBRELLAS |
| DOOR PANEL MIRRORS | SEAT COVERS IN: |
| ELECTRIC CLOCKS | Vanity - Harmony |
| VIEW MASTER MIRRORS | Tartan - Gabardine |
| CIGAR LIGHTERS | Custom Fibre |
| DASH TRAYS | |
| VISOR VANITY MIRRORS | |
| DOOR FLANGE MIRRORS | |
| DECK GUARDS | |

(Above are Genuine CHRYCO Accessories)

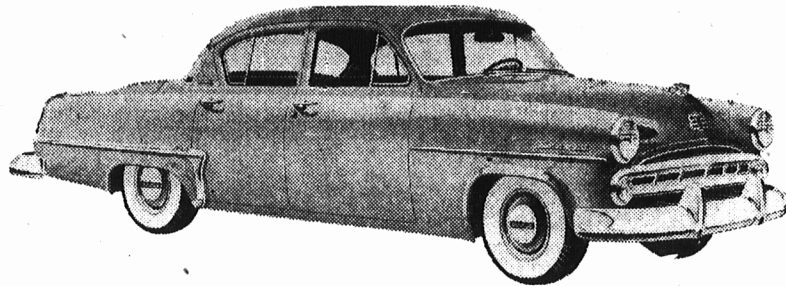
1953 Regent Sedan



SALE SPECIAL SALE

See the dependable new '53

DODGE



Long, Low, Lively... and Sensationally Smooth

Come in today and let us prove to you that there is much that is entirely new and different about the new 1953 Dodge. There's not only new beauty and new performance but there's an entirely new kind of ride.

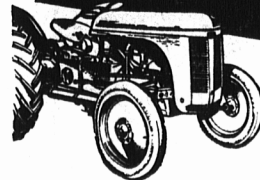
The 1953 Dodge has a three-way smoother ride... steadier... more level... softer. It hugs the road, handles surely and takes the curves in stride. A demonstration will convince you.

USED TRACTORS, ETC. Special Clearance

- 1—1950 Farmall Cub \$495
 - 1—1950 Massey-Harris Pony \$590
 - 1—1947 Ford Ferguson \$685
 - 1—1948 Ford Ferguson \$780
- (Trade & Terms Accepted)

- New and Used Machinery For Sale
- BOMBARDIER TRACTOR TRACKS
 - HARROWS: Tandem Disc, Spike Tooth & 2 & 3 Sect. Lift Type Spring Tooth.
 - CULTIVATORS: Spring & Rigid Tine.
 - PLOWS: Moldboard, Two-Way & Disc.
 - S. & B. SOILERS & TILLERS
 - SIDE DELIVERY RAKES
 - CORDWOOD SAWS & PULLEYS
 - BLADE TERRACERS
 - FOUR WHEEL WAGONS
 - MANURE SPREADERS & LOADERS
 - THREE ROW RIDERS
 - BINDERS & HAY MOWERS, etc.

NEW
LOW PRICE
on a Genuine
FERGUSON
TRACTOR



Ask Us For Your
B - A GAS AND OIL
C.C.M. Bicycles and Tricycles
Parts and Accessories
Car Chains — Mud and Snow Tires
Glycol and Prestone Anti-Freeze

Used Cars and Trucks Clearance Sale

- | | |
|---------------------------------------|---|
| 1930 Willys Coupe \$25 | 1939 Buick Sedan \$100 |
| 1930 Plymouth Sedan \$35 | 1939 Dodge Sedan \$100 |
| 1931 Durant Sedan \$30 | 1939 Ford Sedan \$165 |
| 1931 Pontiac Coupe \$45 | 1939 Ford 1/2-Ton Express \$165 |
| 1931 Chevrolet Sedan \$60 | 1940 Dodge Sedan \$50 |
| 1931 Ford A Coach \$95 | 1940 Studebaker Sedan \$65 |
| 1932 Plymouth Sedan \$35 | 1940 Ford Sedan \$75 |
| 1932 Dodge Coupe \$50 | 1940 Dodge 1/2-Ton Express \$85 |
| 1933 Chevrolet Coach \$25 | 1940 Dodge 1/2-Ton Express \$75 |
| 1933 Chevrolet Coach \$85 | 1941 Ford Coach \$60 |
| 1933 Chevrolet Coach \$35 | 1941 Chevrolet Sedan \$75 |
| 1934 Chevrolet Sedan \$30 | 1941 Ford Coach \$75 |
| 1934 Ford Sedan \$35 | 1941 Dodge 1/2-Ton P. & R. \$95 |
| 1934 Ford Coach \$35 | 1941 Dodge Sedan \$100 |
| 1934 Plymouth Coupe \$35 | 1941 Dodge Sedan \$150 |
| 1934 Dodge Sedan \$75 | 1941 Fargo 1/2-Ton P. & R. \$125 |
| 1934 Dodge Sedan \$60 | 1941 Ford 1-Ton P. & R. \$185 |
| 1935 Chevrolet Coupe \$35 | 1942 Chrysler Sedan \$175 |
| 1935 Ford Coupe \$35 | 1943 Hudson Sedan \$135 |
| 1935 Terraplane Sedan \$35 | 1944 Chevrolet 1-Ton \$150 |
| 1935 Chevrolet Sedan \$45 | 1944 Fargo 2-Ton \$150 |
| 1936 Dodge Sedan \$25 | 1945 Ford 2-Ton \$125 |
| 1936 Dodge Sedan \$30 | 1946 Pontiac Coach \$175 |
| 1936 Chevrolet 1/2-Ton Exp. \$35 | 1946 Fargo 2 1/2-Ton \$275 |
| 1936 Plymouth Sedan \$35 | 1946 Ford 3-Ton \$275 |
| 1936 Terraplane Sedan \$60 | 1946 Dodge 2-Ton Hoist \$375 |
| 1936 Chevrolet Sedan \$80 | 1947 Ford 2-Ton \$125 |
| 1936 Pontiac Sedan \$85 | 1947 Mercury 2-Ton Hoist \$450 |
| 1937 Ford Sedan \$35 | 1947 Ford 1-Ton Express \$465 |
| 1937 Ford Coach \$35 | 1947 Chev. 3-Ton Hoist \$450 |
| 1937 Ford Sedan \$35 | 1947 International Panel \$650 |
| 1937 Nash Coupe \$35 | 1947 Studebaker 1/2-Ton Ex. \$765 |
| 1937 Ford Sedan \$65 | 1947 Chev. Coach \$785 |
| 1937 Dodge Sedan \$95 | 1947 Dodge Coach \$875 |
| 1937 Studebaker Sedan \$35 | 1947 Willys S-W \$685 |
| 1937 Ford Coupe \$50 | 1947 Ford Coach \$875 |
| 1937 Dodge Sedan \$75 | 1948 Chev. 1-Ton Exp. \$750 |
| 1937 Dodge 1/2-Ton Express \$75 | 1948 Morris Sedan \$185 |
| 1937 Terraplane Sedan \$75 | 1948 Ford 1-Ton Exp. \$675 |
| 1937 Chevrolet Coach \$175 | 1948 Ford 3-Ton C. & C. \$950 |
| 1938 Pontiac Coach \$45 | 1948 Dodge Sedan \$1200 |
| 1938 Dodge Coupe \$45 | 1948 Dodge Sedan \$1250 |
| 1938 Ford 1/2-Ton Express \$65 | 1949 Dodge 2-Ton \$600 |
| 1938 Nash Sedan \$65 | 1949 Fargo 1-Ton Exp. \$785 |
| 1938 Dodge Sedan \$60 | 1949 Mercury 1-Ton \$850 |
| 1938 Ford Coach \$75 | 1950 Morris Conv. \$765 |
| 1938 Chevrolet Sedan \$100 | 1950 Dodge 1 1/2-Ton \$375 |
| 1938 Dodge Sedan \$125 | 1950 Dodge 2-Ton \$275 |
| 1938 Dodge Sedan \$175 | 1950 Dodge 1-Ton Exp. \$1000 |
| 1938 Dodge Sedan \$275 | 1950 Dodge 1/2-Ton Exp. \$1325 |
| 1939 Hudson Sedan \$45 | 1951 Pontiac S-D \$1250 |
| 1939 Hudson Sedan \$45 | 1951 Dodge 1-Ton C. & C. \$1350 |
| 1939 Plymouth Sedan \$65 | 1951 Dodge 1/2-Ton Exp. \$1350 |
| 1939 Nash Sedan \$65 | 1951 Dodge 1/2-Ton Exp. \$1500 |
| 1939 Plymouth Sedan \$85 | 1951 Dodge 1/2-Ton Exp. \$1550 |
| 1939 Pontiac Sedan \$85 | 1951 Dodge 2-Ton Platform & Racks, new motor, hoist, etc., perfect \$1995 |
| 1939 Ford Coach \$85 | |

Some of the above units are complete with Radios and most complete with Heaters. All the better Cars and Trucks completely Serviced and Winterized. All at Bargain Prices.

TRADES & TERMS ACCEPTED (Second Hand TIRES In Stock)
FULL LINE OF SECOND HAND CAR & TRUCK PARTS IN STOCK

E. K. JOHNSTON, General Merchant, Murray River

We handle ELECTRICAL APPLIANCES of all kinds.

For your home or business—the best in heating equipment:
FAWCETT RANGES
FAWCETT HEATERS

Murray River Theatre
(Coming Features)

- Dec. 25—Rhubarb
- Jan. 1—Elopement
- Jan. 8—Submarine Command
- Jan. 15—Silver City
- Jan. 22—Aaron Slick from Pumpkin Creek

GROCERIES

MOLASSES, Fancy Quality, Extra Special per gal. 79c

White SUGAR, 10 lbs. 89c

Carnation MILK, 6 tins 89c, case price 6.89

TEA, broken Pekoe, lb. 65c

Magic BAKING POWDER, 1 lb. tin ... 29c

Fresh Stock PITTED DATES, 2 lbs. 29c

Bleached SULTANA RAISINS, per lb. 29c

RAISINS, large, sticky, 2 lbs. 53c

Fluffo SHORTENING, 4 lbs. \$1.00

CRISCO, 3 lbs. \$1.00

Robin Hood ROLLED OATS, 5 lb. pkg. 47c

Campbell's TOMATO SOUP, 2 tins ... 25c

PREM or KAM, 3 tins \$1.00

PRE-STOCK TAKING SALE

MATCHES, 3 boxes 28c

Large Tin AEROWAX with Sponge ... 75c

MIXED NUTS for Christmas, 2 lbs. 79c

Regal FLOUR, 98 lb. bag \$5.79

DRY GOODS

Ladies' Top Quality NYLONS, 51 gauge, 15 Denier, reg. \$1.65 now \$1.29

Flannellette Blankets, 106x90, regular \$6.50, now per pr. \$5.75

Flannellette Blankets, Falcon 70x84, regular \$5.50, now per pair \$4.75

Men's Wear

A few Good quality Men's SUITS going at 1-3 off regular price.

Men's and Boys' heavy JACK SHIRTS selling at 1-3 off.

A REAL BUY in winter footwear for men. Best quality Leather-top GUM RUBBERS. Regular \$9.75 for \$7.50

Refrigerators

We have a good stock of REFRIGERATORS, various sizes, and all well known makes (Leonard, Coolerator, Marquette, Westinghouse) going at BARGAIN PRICES.

Also in stock a good supply of Christmas gift items, such as Toys, Smoker Stands, Floor Lamps, Table Lamps, Automatic Toasters, Irons, etc.

Toy Department

Everything to make Christmas joyous for the kiddies.

- Horns
- Bugles
- Cars
- Wheel Barrows
- Toiletries
- Soaps
- Fans
- Dolls
- Teddy Bears
- Trains
- Aeroplanes

Games of all kinds

Wishing One and All a Merry Christmas and a Happy New Year