

# Tobacco, \$million food plant boost economy of Kings County centre

Montague, one of the most ideal locations for new industry in the province, once again this year has exceeded the \$100,000 mark in the building of new homes with 12 new homes having been erected in various sections of the town.

In addition to this approximately \$20,000 in renovations: the erection of a new telephone building to house requirements for the new dial system to be installed early this year; and the addition of a 16-room wing to the regional high school means that in excess of \$350,000 has been spent on new building alone.

This along with the tobacco industry which has proven successful and which is expected to expand with leaps and bounds, over 40 tobacco farmers getting ready for the 1962 crop year, and the erection of a \$1,000,000 frosted food plant means Montague and area is moving into an unprecedented era of expansion.

This progressive town, with its wide-awake mayor and council who have endeavoured to provide as many services as possible without going into debt, have been able to hold taxes at a low level.

### TOURIST HAVEN

The shopping facilities, hospital, theatre, rinks for curling and hockey, churches, the most modern schools in eastern Canada, the Garden of the Gulf Museum, hotel and motel facilities, beaches for bathing and boating, fishing and many other attractions has much to offer the tourist and visitor.

Also available to the visitor are: doctors, dentists, lawyers, beauty shops, specialty dress shops, banks, insurance companies, plumbing and hardware, TV shops, machinery shops, produce dealers, oil companies with their service stations, auto body shops, car dealers, jewelry stores, hairbers and construction companies.

The purchase of new fire equipment which included a new fire engine costing approximately \$14,000 has given the town adequate fire protection. A full time town policeman as well as a detachment of RCMP is available at all times for the protection of citizens and property.



FRASER VALLEY LTD. OFFICIAL SIGNS AGREEMENT WITH GOVERNMENT

In the field of sport Montague has never taken a back seat and for many years was tops in curling and Little League base ball outstanding showing has been made. The curling club has purchased a new ice conditioner, the first in Eastern Canada and the Little League ball club have purchased an automatic ball pitcher also the first in eastern Canada.

### NEW RINK

It is the hope of the community Welfare League Ltd. to sell the existing hockey rink for a substantial sum and to erect a new artificial skating and hockey rink. Negotiations are underway at the present time in regard to this matter.

The high school has an enviable record. In the 1962 provincial examinations, grade 10 won three of the four scholarships at grade 12. The principal, John Hughes, and his staff are endeavouring to maintain this high standard and to improve the system in every way possible.

The elementary school has the services of a full time physical instructor, a full time secretary, and an efficient staff of teachers all supported by a very active school board.

## Can. Tire has biggest year

Canadian Tire Corp., Charlottetown, owned and operated by Stewart and MacRae, Ltd., is one of 230 serving you east of the Lake Head, including one recently opened in Nassau, in the Bahamas. Of this total, 33 are in the Atlantic Provinces.

Canadian Tire started in 1949 on Great George St., with one employee, and in 1952 moved to its present site. They now have 14 employees.

These stores have been serving Canadians for almost 50 years, the first founded by John W. Billee in Toronto. They offer the public over 17,000 items through their associate stores and are

## Crop insurance is worth nearly \$12,000 to growers

Prince Edward Island's potato growers will collect \$11,938.21 in insurance claims from their first year's participation in a scheme which was inaugurated only a year ago.

Highest of the 26 claims submitted was for \$2,507 which covered 25 acres of potatoes which were damaged by blight and wet weather. The lowest claim was for \$81.75.

The potatoes have a top insurable value of \$158.98 per acre which works out to \$1.00 per bushel at an estimated average production of 146 bushels per acre which was taken as 60 per cent of the 10 year average.

Agriculture Minister Andrew MacRae was reasonably well satisfied with the first year's operation of crop insurance, though the number of growers who signed up last spring was smaller than expected.

The minister said that the department is now looking into the possibility of bringing grain under the insurance scheme.

Tobacco is likely to be brought under it later but this crop in the province is only has two years of commercial production—is too new to have established a production average on which an insurance plan can be based.

# PAVING THE WAY TO P.E. Island's PROGRESS

- Highway and Airfield Paving
- City and Town Street Paving
- Driveways - Service Stations
- Industrial Paving, etc.

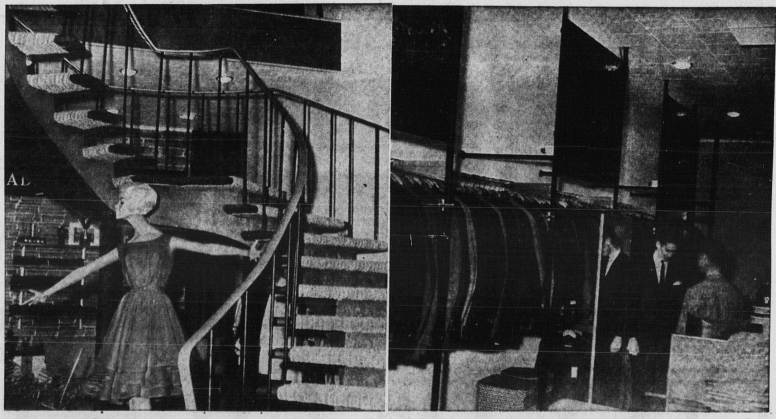
OVER 62 YEARS EXPERIENCE IN ROAD CONSTRUCTION IN THE MARITIME PROVINCES...

## Warren Maritimes Ltd.

PLANTS AT CHARLOTTETOWN AND NEW LONDON

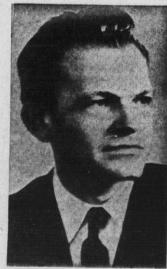
## MacKenzie's House of Fashion ... Established 1865

### ... P.E.I.'s Most Exclusive Store of Men's and Ladies' Wear ...



Stairway to Fashion ... Ladies Wear, Second Floor

Ground Floor Showing Men's Suit Section



From Fashion Houses in Montreal, Toronto and imports from England are styles especially chosen with you in mind.

For the future Bride and Groom, let us plan your wedding trousseau from start to finish.

### A Special Message of Thanks:

The generous response to our 1962 Christmas Seal Campaign has insured the continued operation of the mobile x-ray unit, as an invaluable adjunct to the preventive tuberculosis programme of the Provincial Health Department.

I would like to take this opportunity of thanking all voluntary workers and the many contributors to our most successful 1962 Christmas Seal Campaign.

Yours truly,  
H. T. Holman  
President  
Tuberculosis League.

"Progressing Through Service To Others"

## The P.E.I. Tuberculosis League

MacKenzie's  
HOUSE OF FASHIONS  
SUMMERSIDE, P.E.I.

## The P.E.I. Tuberculosis League ...

# MAKING PROGRESS THROUGH PREVENTION

### Tuberculosis Lingers As Life Span Lengthens

The most effective method of discovering unknown contagious tuberculosis in the upper age group is the chest x-ray.

Supported by the Annual Christmas Seal Campaigns a free mobile chest x-ray service has been available to "Islanders" since 1945—320 unknown cases have been detected, 60% of whom were in the upper age group. These cases have been hospitalized thus sparing hundreds of our younger citizens the disrupting experience of leaving their homes, their schools, or their jobs to undergo treatment for 1—2 years.