

China War Risk Seen

WASHINGTON (AP) — An Austrian journalist who recently visited China says in an interview he found the Chinese unwilling to risk involvement in a war with the United States. Hugo Portisch, editor of the Vienna Kurier, asked whether he thought the Chinese would start anything that might involve them in a war with the United States, said:

"I don't think they can even dream of starting such a war. They want to go on supporting what they call 'wars of liberation,' but they are terribly afraid of getting involved themselves, at least today."

In a copyrighted interview in the magazine U.S. News and World Report, Portisch also said he found the Chinese "much more outspoken against the Russians than against the Americans."

DOUBLE BED IS DEMANDED

LONDON (AP) — An 80-year-old husband-married only 18 months — has demanded the Southwark Borough Council put a double bed in his new furnished apartment. The council owns the apartment house.

"How can we enjoy our married life in separate beds?" asked Leonard Jones. "It's just not right."

Jones' bride Lois is 69. Jones and his bride moved into the council-owned apartment during the weekend.

A spokesman for the council said:

"Considering the ages together they total 149 — we thought separate beds appropriate. However, it's a logical request I suppose and we'll give it every consideration."

3 Mishaps Are Reported

O'LEARY — Three highway accidents in the O'Leary area were investigated by police on Friday.

A two-car collision at noon near Unionvale School resulted in heavy damage to a Volkswagen driven by Jack Arsenault of Kelley Road and about \$250 damage to a 1965 Ford driven by Clayton Stetson of Unionvale.

No one was injured in the accident which was investigated by Alberton detachment of the RCMP.

About two o'clock Sunday a 1961 Zodiac driven by Raby Adams, Knutsford, and a 1960 Pontiac operated by Glen MacWilliams, O'Leary collided at the intersection of Main Street and the Co-op side street. Minor damage was caused to both vehicles. The accident was investigated by O'Leary policeman Gerald Shaw.

At approximately 9:15 Friday night about \$100 damage was caused in a 1961 GMC light truck driven by Donald Hugh Rafferty of Portage which was in collision with a 1963 Chevrolet driven by Zena Francis Yeo of Elmsdale. The car received about \$250 damage. No one was injured in the accident which was investigated by Alberton detachment of the RCMP.

Broken Axle Causes Wreck

FARNHAM, Que. (CP) — A broken axle caused by an overheated journal, or hotbox, was blamed for a derailment early Monday of 35 cars of a 134-car Canadian Pacific Railway freight train.

A CPR spokesman who gave the cause of the accident said the track, the railway's main line from Montreal to Saint John, N.B., will not be cleared until some time today.

The Montreal-bound train, pulled by four diesels, was comprised of 99 loaded cars and 35 empty ones. The derailment occurred in the middle of the train and the engines and front cars remained on the track.

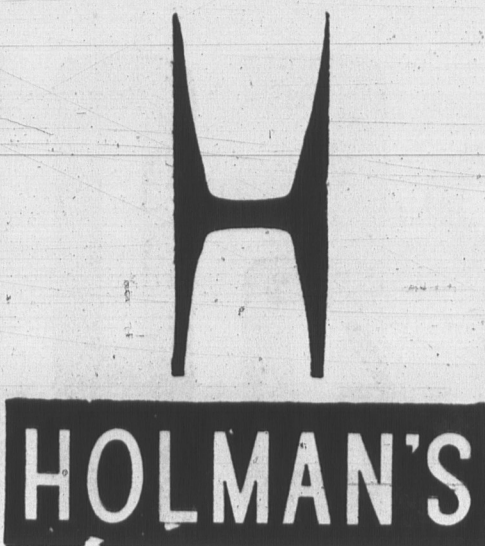
News, Radio Men Seek Nfld. Vote

ST. JOHN'S, Nfld. (CP) — The list of 87 candidates for Newfoundland's provincial election Thursday contains the names of seven active or former radio and newspaper personalities, among them the leaders of both major parties.

Premier Smallwood was a newspaper reporter and editor in Newfoundland and on the mainland years ago. He has published several books on Newfoundland and his favorite hobby remains reading and writing.

Dr. Noel Murphy, Progressive Conservative leader since April and a member of the legislature since the last election in 1962, is the president of radio station CFCB in Corner Brook, Newfoundland's second city. Dr. Murphy used to read newscasts during the station's early days.

William B. Callahan, former managing editor of The Western Star in Corner Brook, is the Liberal candidate in Port au Port.



50 Piece English Dinner Set

Choice of 2 Patterns

Gay floral design in white, body semi-porcelain, traditional shape. "Peppermint" pattern contains 8 each: 9" plates, 6" plates, cereals, fruits, cups and saucers plus 1 cream and sugar.

"Fantasia" pattern contains 8 each: 9" plates, 6" plates, cereals, fruits, cups and saucers plus 1 baker and 1-10" platter.

Reg. 26.95
SALE SET

19.97

Dixie Caramels

Rich chocolate coating with caramel centres. 1 lb. bags.

Reg. .59 ea.
SALE

47c LB.

SEE THESE DEMONSTRATIONS

WED. SEPT. 7th.

- Clairtone Stereo with factory rep.
- Yamaha Motorcycles after 4 p.m. in our parking lot

THURS. SEPT. 8th.

- Mrs. Evelyne O'Brien, Island Jewellery Craft — 10 a.m. to 5 p.m.

- Benjamin Moore Paints with factory rep..

- Canadian Gypsum with factory rep.

FRI. SEPT. 9th.

- Arrow Wash 'n Wear Shirts with Company Rep.

- Firestone Tires Film

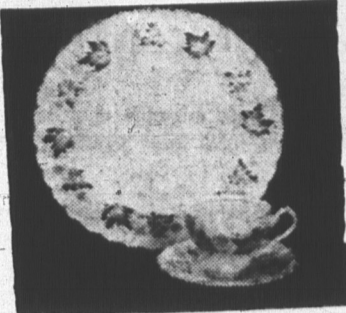
- Teflon Baking

- MacDougall Pumps with factory rep.

- Benjamin Moore Paints with factory rep.

- Canadian Gypsum (a.m. only) with factory rep.

40 Pc. Myott's Maplewood



Shades of Autumn in a beautiful Maple

Leaf-design decorates this popular dinner

set containing 8 each: Cups, saucers,

8" plates, 7" plates and 10" plates.

Reg. 31.60
SALE

24.97

Stanfield's Red Label Yarn

85% wool, 15% nylon for extra wear. Best known for work hose, mitts and sweaters. Shown in full range of colors including heather mix. About 3 1/2 oz. skeins. Reg. 85c. SALE...

77c

3 Piece Bath Towel Ensemble

Bath Towel, Hand Towel & Face Cloth

"Camtex" first quality Thick, Thrifty, Cotton Terry, shown in rich plain pastel colors, finished with hemmed ends, shown in rose, brown, turquoise and yellow. Bath size 30" x 40".

Reg. 1.98 — Sale ...

1.67 PR.

Hand size. Reg. 1.29.
Sale, pair

97c

Face cloth. Reg. 29c.
Sale

4 for 97c

Luxury Chenille Bedspreads

Made from the best quality deep cotton available. Shown in new high pile designs, very thickly tufted. Choice of new popular plain shades including white. A real buy and a most popular gift item.

Double bed size. Reg. 16.95 — SALE ...

11.97

Feather and Foam Pillows

Pillows plumply filled with select crushed chicken feathers. Floral featherproof ticking or foam rubber filled with quilted taffeta covering. Size about 17" x 25".

Regular 1.98

SALE 1.67

BOND



41st. ANNIVERSARY TAILORED-TO-MEASURE SUIT SALE

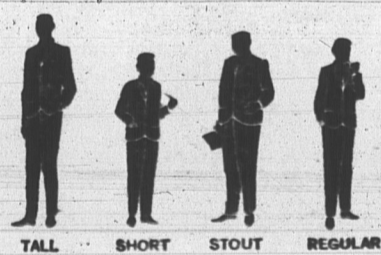
Extra Trousers 41c

FABRICS — The best of British and Canadian looms in all wool worsteds

SHADES AND PATTERNS — Rich new tones, checks, plaids, stripes, plains

STYLES — Your personal selection of new British, American or Continental models ... and of course the Bond famous guarantee:

"TOTAL SATISFACTION OR TOTAL REFUND"



... as individual as your fingerprint

69 COAT & PANT EXTRA TROUSERS 41c

79 COAT & PANT EXTRA TROUSERS 41c

89 COAT & PANT EXTRA TROUSERS 41c



Boys' Cotton SPORT SHIRTS

Long sleeves with trim tapered body and button down collar. Plaids, stripes, plains in blue, red, brown, green. Sizes 8-18.

Reg. 2.98
SALE

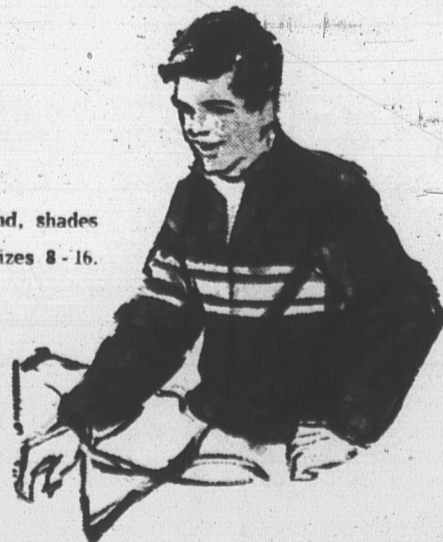
1.97

Boys' Windbreakers

Knit collar, cuffs, and waistband, shades in black, olive, blue, brown. Sizes 8-16.

Regular 4.98 - 5.98
SALE

3.97



Boys' Denim and Chino

PANTS and JEANS

Regular or half boxer waist. Trim tapered legs with no cuff bottoms and reinforced at points of strain for the active boy. Shades in blue, black, beige, olive. Sizes 8-18.

Reg. 3.98 - 4.98
SALE

2.97



New Styles and Patterns

MEN'S SUITS

All wool material. Natural shoulder models with 3 button front. Slimming no pleat trouser with free cuffing. Your choice of plain or cuffed bottoms. Shades in greys, olive, blues, browns. Sizes 36-44 in regular and tall models.

Reg. 49.95 - 59.95
SALE

39.97

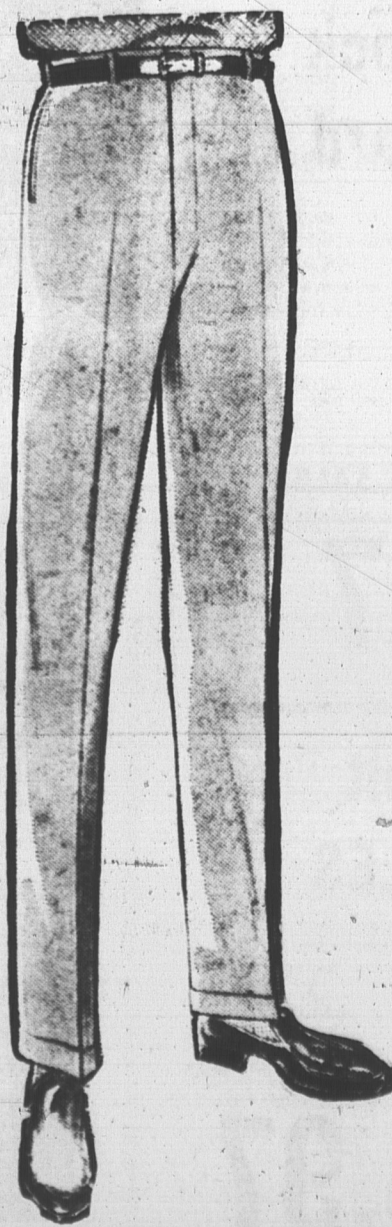
Men's Long Sleeved

Sport Shirts

Regular or neat looking button down collar. Trim tapered body for a neater appearance. Bold plaids, checks and stripes in blue, brown, olive, red. Sizes S, M, L, XL.

Reg. 3.98 - 4.98
SALE

2.97



Men's Casual Pants

Regular or extended waistband with adjustable side tabs, trim tapered legs with no cuff bottoms. Plain shades in black, beige, blue and olive. Sizes 28-42.

Reg. 5.98 - 6.98
SALE

4.97

Men's Drill Work Pants

Tailored from a Sanforized cotton drill with heavy duck pockets. Colour spruce green. Sizes 30-44.

Reg. 5.98
SALE

4.97

Matching Work Shirts

Sizes 14 1/2 - 16 1/2. Reg. 3.98.
Sale

2.97