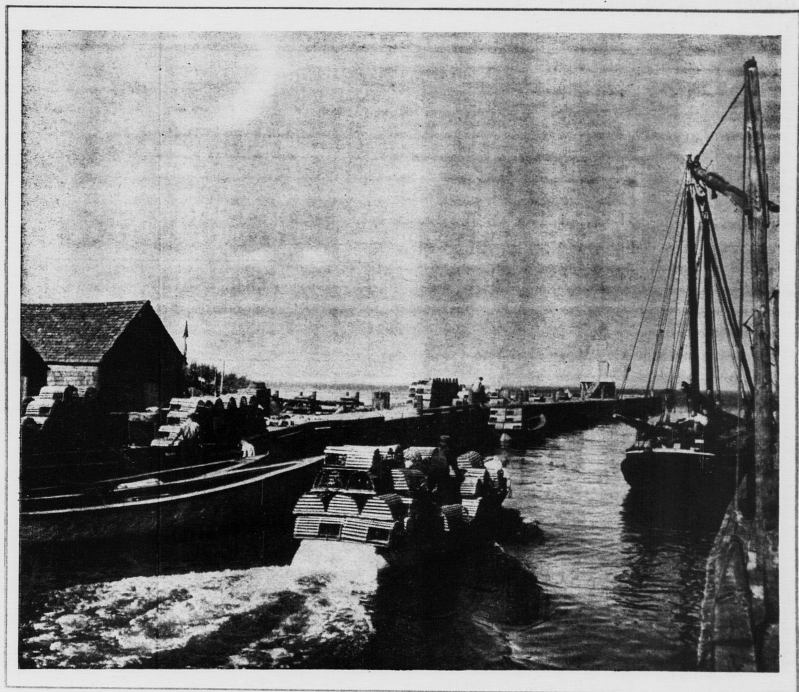


1964

REPORT ON THE



FISHING INDUSTRY

of PRINCE EDWARD ISLAND . . .

With new fish processing plants ready to roll in Morell and Summerside and a multi-million dollar processing complex soon to get underway in Georgetown, confidence in the future health of P.E.I.'s fisheries is rather obvious. This special report contains stories on these and other new developments in the industry.