

**SMASHING 45% off**  
CATALOGUE PRICES  
**"HIWAY-BYWAY"**



**NO TRADE NEEDED** - for you to take advantage of these attractive **CLEARING PRICES** -

on **HIWAY-BYWAY** Winter Tires  
These low prices in effect only to the extent of in-store and warehouse stock.

ROAD HAZARD INSURED	TUBELESS BLACKWALL		SIZE	TUBELESS WHITEWALL	
	Catalogue Price	SALE PRICE		Catalogue Price	SALE PRICE
No time limit	21-10	11.60	520/10	28-25	15.54
No mileage limit	25-10	13.80	520-550/12	28-35	14.70
	26-20	13.86	560-590-600/13	30-05	15.79
	26-70	14.88	640-650-700/13	27-75	15.27
	24-65	13.56	645/14 (560-590-600/14)	32-45	17.85
	28-85	15.87	695-735/14 (650-700/14)	34-00	18.70
	30-20	16.61	775/14 (750/14)	36-25	19.94
	32-20	17.71	825/14 (800/14)	39-50	21.72
	35-10	19.30	855/14 (850/14)	43-95	24.18
			885/14 (900/14)	28-30	15.56
	25-15	13.84	685/15 (560-600/15)	30-90	16.99
	27-45	15.10	735/15 (640-650/15)	34-80	18.70
	30-20	16.61	775/15 (670/15)	36-25	19.94
	32-20	17.71	815/15 (710/15)	39-50	21.72
	35-10	19.30	845/15 (760/15)	43-95	24.18
	39-05	21.48	885-900/15 (800-820/15)		

**EXTRA! Cash and Carry BONUS COUPONS**  
Use the Cash Bonus Coupons for **FREE INSTALLATION**  
**NEW STORE OPEN**  
TILL 9 P.M.  
**THURSDAY, FRIDAY**  
**SATURDAY**

**YOUR BIG CHANCE FREE**  
**Live FREE FOR A MONTH**

- WE WILL PAY YOU UP TO . . .
- \$80.00 for Rent
  - \$80.00 for Food
  - \$25.00 for Fuel
  - \$ 9.00 for Electricity
  - \$ 6.00 for Telephone
- Draw To Be Made Jan 31st

Grand - Opening  
**SERVICE DEPARTMENT**  
**SPECIAL!**



**ALL PARTS and LABOUR GUARANTEED**

**IGNITION TUNE UP COMPLETE WITH . . .**

- New Points
- New Condenser
- New Rotor
- New Spark Plugs
- Adjust Carburetor
- Set Timing
- Check Charging System
- Clean Battery Connections
- Check Fan Belt

4 Cyl . . . . . **8.95**    6 Cyl . . . . . **9.95**  
8 Cyl . . . . . **10.95**

Additional charge for any extra parts and labor required.

**BRAKE RELINING SPECIAL**  
**REPLACE BRAKE LININGS ON ALL FOUR WHEELS**

Chev. - Ford and Dodge Cars Up to 1958 **12.95**  
Chev. - Ford and Dodge Cars From 1959 and Up **14.95**

Additional Charge For Any Extra Parts and Labour Required.

**WHEEL ALIGNMENT SPECIAL** only **5.99**

Our Service Dept. Is Equipped To Service All Makes and Models

- We Can Install . . .
- Complete Exhaust Systems
  - Shocks
  - Springs
  - Complete Brake Jobs
  - Complete Ignitions
  - Fuel Pumps
  - Carburetors
  - Engines
  - Transmissions
  - Ball Joints
  - Water Pumps
  - Replace Hoses
  - Fan Belts
  - Batteries
  - Tires
  - Wheel Balancing

**Move Laplanders To Canada Is Suggested At Conference**

By BRENDA LARGE  
OTTAWA (CP) — Canada should consider importing some Laplanders to settle its north-land, a member of the Northwest Territories Council suggested here.

Frank Vallee of Ottawa, an appointed member of the nine-man council which is holding its winter session here, said another councillor had brought to his attention a magazine article which told of a group of Laplanders in Finland who were unhappy with their living conditions and were threatening to move to Canada.

"We might consider encouraging some Laplanders to come to Canada," said Mr. Vallee. "I say this half-jocularly, but these are things we can't rule out."

The Carleton University professor spoke during debate on a council session paper dealing with ways to encourage settlement of the Northwest Territories.

The paper, a slender, two-page document, said the relaxation of hunting regulations in the Territories was intended to encourage new settlers.

**NEED PROTECTION**

But it was important to consider the need to preserve game and to make sure local Indian and Eskimo populations did not suffer from the relaxed hunting rules which had formerly given them a virtual monopoly on big game.

Commissioner E. G. Sivertz said he was strongly against any further general easing of hunting regulations until statistics had been obtained about the effect on the supply of game.

"The population of the Territories is not going to remain at 27,000 people. If you relax the hunting regulations to allow everybody the same privileges now held only by holders of general hunting licenses, you will put many species in danger of extinction."

He suggested that the council would not be in a position to make recommendations until game conservation experts had studied the game population "for several years."

**CAN GET LICENCES**

Settlers in the Northwest Territories now can obtain a licence for restricted hunting of big game in the Mackenzie dis-

They can also obtain licences to hunt upland game birds and migratory water fowl in season in areas not classified as game preserves and game sanctuaries.

Mr. Vallee said the easing of hunting regulations was just one measure which could be taken to encourage settlement in the Territories.

Abe Okpik of Yellowknife, first Eskimo to be named to the council, suggested five things which might be done to encourage settlement in the North.

They included: Increased tax exemptions, subsidies for industry, wage increases for workers in isolated areas, subsidies for the fur industry and loans to small businessmen for the purchase of new equipment.

**N.Y. Automated Hospital Promises Patient Comfort**

NEW YORK (AP) — Yeshiva University's new hospital looks, sounds and smells quite ordinary. But it's a veritable "automated hospital."

Through a piece of equipment about the size of an electric razor, a patient can speak to his nurse without having her come to his room. He can adjust room lighting with it, work his television and radio sets and get the correct time.

He even can adjust his own bed without assistance.

Paging by loudspeaker is nonexistent. Each doctor, department administrator and chief nurse carries a wireless pocket receiver with a "beeper," activated individually or in groups by a central switchboard.

Special communications systems extend to operating rooms where doctors can speak directly with the pathology laboratory, blood banks, anesthesiology, sterile supply and other departments.

The Bronx hospital, officially called the Hospital of the Albert Einstein College of Medicine of Yeshiva University and financed through donations, opened Jan. 3 but building continues.

The \$20,000,000, 375-bed hospital has two pieces of equipment it describes as unique in the United States. They are an isotope scanner and a linear accelerator, each built to specification.

In normal isotope scanning, a patient is given a dose of radiation while a doctor watches the organ he believes is malfunctioning to note how it takes the radioactive material.

Only one organ can be studied at a time that way.

"Our new scanner does the entire body at one time," said a radiologist.

**LAKE IS SHALLOW**  
The average depth of Utah's Great Salt Lake is only 13 feet.



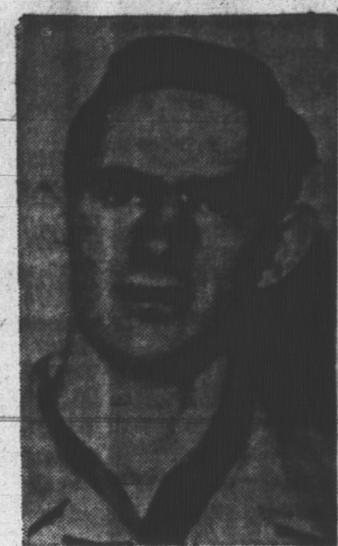
Myron Weeks  
Service Manager



Wendall Silliphant



Dave Constable



Donnie Johnstone

**Service Is Our Business . . . . .**

. . . Yes these four men have the necessary training and experience to give your car the best possible care and are working with the latest in equipment designed to find and repair any problem you might have with your auto. Drop in and let these four trained, experienced mechanics put your car into top notch working order.

**OPEN TODAY**

**CANADIAN TIRE**  
ASSOCIATE STORE  
New Royalty Mall