

TIMELY NOTES ON TOPICS CONNECTED WITH Silver Fox and Mink Farming

Notwithstanding the unfriendly atmosphere which prevails in international affairs auctions go on as usual in Russia. The 22nd international Leningrad fur auction will be held on July 24th with goods on show July 14th. Over fifty buyers from the United States and others from all over Europe will be present to bid on the immense numbers that will be offered. For instance there are half a million raw squirrel, 50,000 kolinsky, 10,000 red fox, 200,000 muskrat, 15,000 white fox, 200,000 grey hare, 250,000 Persian black, 30,000 Persian grey, 60,000 white and black fitch, 7,000 sable—which would probably be worth almost as much as the majority of the furs offered. Particularly enough there are 20,000 house cat skins on sale. These have been dressed and no doubt will be made into gala furs for some charming young lady. Russia with its immense tracts of land and forest area has no doubt the greatest collection of furs of any country in the world. One thing we have not noticed in most of the recent auctions is silver fox although some months ago we saw that 10,000 would be offered. Mink and fox breeding are being carried on quite extensively.

In the latest Women's Wear Daily we noticed an ad which states: "Two amazing values for early promotion, squirrel two row coat 34 inches long, squirrel three row coat 40 inches long. Come and see these styles that will sell this season for \$295." So squirrel are not to be despised as furs, but just how they make a big collection of them we do not know. For many years we have seen the curious little chaps running around the trees in our ranch and we think it would be a very difficult proposition to catch any quantity of them. They certainly can move fast.

The New York Auction Company issued its schedule of auctions for December 1951 and also for 1952. This year December auctions will be five in number and will be devoted entirely to mink, but on January 3, 1952, both mink and fox will be featured and this will continue right through until November 10th.

A number of New York firms have signed a contract in Moscow to buy 100,000 Persian lamb at \$10.75 per skin, f.o.b. a Soviet port. Other brokers say the price is too high. One said he was prepared to buy a quarter of a million skins if the price was forty cents cheaper. When the skins are purchased a down payment of 30% has to be made. A great many are cautious about investing large sums of money in Russian furs for future delivery, perhaps due to the international situation.



PROPANE GAS For Hot Water Heating, Cooking and Cabin Heating. This Gas is:— Non-Poisonous - Clean - Economical - Fast. Sold by STANLEY, SHAW & PEARDEN LTD. Distributors of McClary Propane Gas Range Stoves 176 Gt. Geo. St. - Phone 263

ATTENTION WOOL GROWERS Buying Unwashed Wool at HIGHEST CASH PRICES. Drop in and see us before selling. MAURICE BLOCK & CO. 158 Kent Street Warehouse Entrance West of Home Motors

SEED GRAIN WE HAVE IN STOCK: Registered Charlottetown 80 Barley No. 1 Abagweit Seed Oats. No. 1 Beaver Seed Oats. ATLANTIC WHOLESALE LTD. Charlottetown, P. E. I.

Scene Of Destructive Fire At Bunbury



Pictured above is a scene from this week's destructive fire at the farm of Harry Wood, Bunbury, when a total of eight farm buildings were destroyed. In the photo above flames may be seen eating their way through the left end of the building as smoke pours from the roof.

NEWSY NOTES

By J. A. Clark, D.Sc.

Charlottetown No. 80 Barley

Charlottetown No. 80 barley was selected by the writer, from barley secured in Rustico, known locally as Old Island Two-rowed, which had been brought from England to Prince Edward Island by the early settlers. Its progenitors were in all probability English Chevalier and there are evidences that natural crosses had occurred, as several distinct types were selected from the original seed. These were tested for several years with other characters of the Charlottetown No. 80 led to the discarding of the other strains, these were: that the majority of its awns are frequently shed at harvest time, leaving the spikes practically bald and it out-yielded all other varieties under test by a significant percentage. In a ten year period ending with the season of 1921 it out-yielded its highest competitor among two-row sorts, Gold by 7.2 percent and the highest yielding six-row sort, "O. A. C. No. 21" by 8.5 percent. During the first five years of that period, field tests were also conducted in different districts of the province. The average yield from these fields was 51.9 bushels per acre. This compared with the average yield for the province, during the same period, (as recorded in the "Census and Statistics Monthly"), of 29.9 bushels per acre indicated an increase of 73 percent over the average barley crop.

Recent Rod-Row Tests

The average yield per acre, from rod-row tests of barley, at Charlottetown for the eleven years ending with the 1950 crop, gave the following standing of the three leading varieties: Byng 48.5 bushels, Charlottetown No. 80, 44.7 bushels and O. A. C. No. 21, 39.7 bushels. Byng does not have the desirable characters of Charlottetown No. 80 and it has a disqualifying weakness of straw, so that it is not recommended for this province.

Official Description

MR. P. R. COWAN, Cereal Specialist, Barley Investigations, Central Experimental Farm, Ottawa, describes it as follows: "Charlottetown 80:— This is a two-rowed Chevalier type of barley that is, the heads are lax and narrow, the awns are rough. The plant is medium to tall with medium narrow leaves of medium color. The heads completely protrude about four inches from the sheath and are nodding. The awns are covered with medium barbs. The aleurone is yellow, the rachilla hairs are short, the veins are medium barbed and the sterile spikelets are large." To this we might add for this province that: it ripens slowly, and it takes about 97 days to mature compared with 92 days for O. A. C. 21. It is a most satisfactory barley to sow with oats or peas and vetches as it ripens more nearly at the time of the other grain. In the ten year test mentioned above, its average weight per measured bushel was 53.9 pounds, compared with 47.9 pounds for O. A. C. No. 21, producing not only an average of 5 bushels and three pounds more per acre, but 6 pounds more grain per measured bushel.

A Barley That Drops Its Awns

One of the outstanding features of Charlottetown No. 80 barley that commends it to farmers, is the dropping of its awns in the

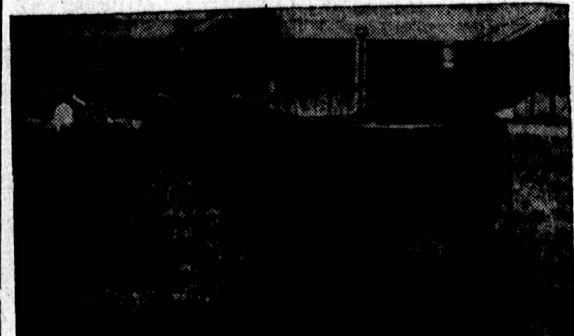
field. The heads are nodding, with the awns spread like a fan before harvest time, the grain is firmly attached to a fairly compact head, which prevents it from shelling easily, but the awns at maturity are only weakly attached, and under certain conditions all drop off in the field, leaving the heads naked. This character of the awns being loosely attached, is very beneficial, even when weather conditions do not remove the awns before harvest, they all come off readily in thrashing. The Grain Growers' Guide, commenting on this feature said: "Undoubtedly much more barley would be grown in Canada were it not for the discomfort of handling the crop on account of the awns and beards attached to the kernels in the ripened grain. Apart from this aspect of the matter, these barbed awns injure the straw for feeding purposes. Horses fed barley straw in the rations are apt to get an accumulation of awns between the jaw and the cheek, causing sores. A barley beard entering the eye of either man or animal may have serious consequences. In Prince Edward Island a variety of barley has been produced, that drops nearly all of its awns before harvest time, and thus overcomes these disadvantages. This variety which is known as Charlottetown No. 80, originated at the Charlottetown Experimental Station.

A Popular Variety

The Late James E. Murphy, of Augustine Cove, P. E. I., one of the outstanding pure seed growers of this province, referred to Charlottetown No. 80 barley as: "the farmer's barley." After testing it, he dropped the growing of other varieties. It has become the leading barley throughout the Maritime Provinces and has given a very good account for a field and quality when tested elsewhere. At Maritime grain shows and Exhibitions, it has carried off the premium honours in all two-row barley classes for years. Many hullless, beardless and smooth awn varieties have been tested with Charlottetown No. 80, and discarded because of loss by shelling, low yielding qualities and other undesirable characters. When the Prince Edward Island "Seed Drill Survey" was made in 1950, with reference to barley the report states: "All samples were of the Charlottetown No. 80 variety."

Increase In P. E. Island Barley Production

In checking over the annual barley production as given in the reports of the Provincial Department of Agriculture, we find that during the last forty years, by averaging each ten year period, there has been a steady and significant increase in the total amount of barley produced up to 1940, since then production has doubled in the period ending in 1950 over the previous period and it was more than three times the production for the period ending in 1920. We believe this is due to the general distribution of information concerning the value of barley, as the chief grain ingredient, in approved fattening rations for hogs, poultry, etc., and also to the introduction of Charlottetown No. 80 barley during the first period mentioned. It was registered April 6th, 1916, and given the Canadian Seed Grower's Certificate No. E. 8596.



Design's Royal Jester, Jersey bull recently imported from Jersey Island by Valleyanna Farm, Markham, Ontario,—sire of many prize-winning sons and daughters on Jersey, and sire of the dam of one of the young bulls specially selected for the Prince Edward Island Jersey Club, by the Manager of Valleyanna, Bert McGrath.

W.C.T.U. NOTES

THE CHRISTIAN CONCEPTION OF TEMPERANCE (PART II) (Condensed from a booklet of the same title by Rev. Dr. Elbert Paul)

In the section previously printed the author defined the word "temperance" and set forth the ideal expression of temperance in life. Two pertinent questions were asked with regard to the temperate use of anything: (1) What will be the effect of its use upon me? (2) Upon my neighbors? The consumption of alcoholic beverages has reached such serious proportions and its influence invaded so many spheres of life that the modern Christian must have a definitely Christian attitude toward it—an attitude that can be defended in the full light of the teaching, spirit and life of Jesus-Christ.

The Facts

Let us look at the FACTS regarding Alcohol itself and its effects on the human system. "Alcohol is actually a depressant or narcotic. It acts on the brain and higher centres of the nervous system to deaden them. The first effect is a loosening of normal controls. This taking off the brakes gives the appearance of increased activity and thus causes many people to have the false impression that alcohol stimulates. As more alcohol is absorbed the person becomes less and less able to control his movements. His tongue becomes thick and his gait unsteady; and, if he drinks enough, he finally falls into a complete stupor. Many experiments show that even small amounts of alcohol tend to weaken control over muscles. One of the first effects of alcohol is to lengthen 'reaction time'—that is, the time that passes between your seeing a signal and reacting to it. You will see just what this means if you imagine that the signal is a child who has suddenly stepped in front of a moving automobile and the reaction is putting your foot on the brake to stop the car. Any lengthening of this particular reaction time may mean the difference between life and death."

The Verdict

Upon the basis of this evidence plus human experience the effects on the individual and society can be seen to be definitely harmful. The relation of the consumption of alcohol to increase in accidents (driving and industrial), to crime, to poverty, to juvenile delinquency (because of broken homes) is exceptionally clear.

WHAT THEN SHOULD BE THE ATTITUDE OF THE CHRISTIAN TOWARD ALCOHOLIC BEVERAGES?

A. His Personal Use of Them. TOTAL ABSTINENCE is demanded of the true Christian because of (1) Personal Effects of Alcohol—any one who is serious in following Christ must give it up completely. (2) Social Effect—it drags others down—so drinking it is a bad example. If we want to be builders in the Kingdom of God we will leave it alone.

B. Our Attitude Toward Its Social Control

Various methods have been used or advocated as means of handling the liquor problem in its organized form. We cannot be indifferent to this phase of the problem because the industry is great and powerful and wields tremendous social, economic, and political influence.

THE PRESENT SYSTEM OF

Liquor Control is condemned because it leaves the industry free to build up vast power and makes the government the retail agent of the brewer. Under this system facilities are multiplied, social drinking becomes respectable, bootleggers continue to flourish, politics is in constant danger of corruption. The social bill of alcoholism is borne by the state, social and economic problems are complicated, many die or are killed directly or indirectly because of the traffic. There is waste of wealth and of life itself. The proposal of nationalization is now being made—that by public ownership of the manufacture and retail sale of alcoholic beverages we could solve the problem. By this method we are merely substituting public greed for private greed and the government would be just as eager for profits as is the private owner today.

Dry-Cleaned to Avoid Waste BRAS DOR STOKER COAL Oil-Treated to Banish Dust ASK FOR IT!

FOUR GOOD TRACTOR BUYS

- 1 FORD TRACTOR \$645
1 FARMALL "H" \$875
1 FARMALL "A" \$700
1 MASSEY-HARRIS 102 Se. \$600

A. Pickard Farm Tractors Ltd. MALPEQUE HIGHWAY

POTATOES

We are not advising but will say that if you do not sow you will not reap.

The acreage being planted is much less than last year.

Seed is cheap. Fall prices may be excellent.

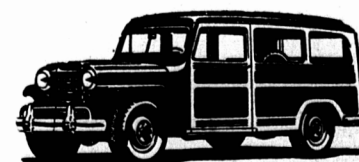
The Island Fertilizer Co. Ltd.

SLIPPERY MUD? OFF-ROAD TRIPS? STEEP GRADES? DEEP SNOW? HEAVY SAND?



A WILLYS 4-WHEEL DRIVE TRUCK IS YOUR ANSWER!

A Willys 4-Wheel-Drive truck can get through under road conditions that would stop an ordinary truck. On the highway it operates in conventional rear-wheel drive—shifts instantly to 4-Wheel-Drive for deep mud, bad roads and back-country travel. Here's a "go-anywhere", "do-anything" vehicle that volunteers for service anywhere.



The Universal 'Jeep', powered by the famed 60 B.H.P. 'Jeep' engine, is tractor, truck, mobile power unit all in one. Canada's most versatile farm vehicle.

Willys 4-Wheel-Drive Station Wagon: 2-Wheel-Drive for highway speeds—4-Wheel-Drive for country work. Carries 6 passengers or a 1,200 lb. cargo.

WILLYS-OVERLAND OF CANADA LIMITED

TORONTO . ONTARIO

MacKAY'S GARAGE

57, St. Peters Road, Charlottetown Phone 2648-L

CAPONIZING

Make your appointment early when you buy your chicks to avoid disappointment. Best age for Cross Breds 5 to 6 weeks; for Barred Rocks 6 to 7 weeks. For appointment phone 1591-2 or write

KEITH MUTH Southport