

# Beauty program draws nation-wide attention

"An already beautiful land is becoming more beautiful thanks to the work of the Rural Beautification Society". Premier Walter S. Shaw told these attending the 16th annual dinner of the organization here late last year.

The premier's observation echoes the sentiments of tens of thousands of visitors who have come in admiration, and sometimes with a pardonable feeling of envy as the society's beneficial program of beautification and improvement developed through the years.

## Quality foods are available

Satisfying seafood fresh from the ocean, garden fresh vegetables, berries and fruit picked at the peak of perfection, and island potatoes are part of the daily menu served in pleasant surroundings at popular dining rooms and restaurants in the Garden Province.

World famous Malpeque oysters vie with Atlantic lobsters, and a variety of other fish dishes, for top honors at eating places overlooking the sea. Larger resorts located close to the water can arrange for shore dinners and guests can dig their own clams for an old time clam bake.

Conceived originally by Lt. Col. E. W. Johnstone of Burlington the idea grew and expanded with the passing years.

This year, for example, a new competition has been added to include motels, hotels, motor courts and cottages. Many tributes have been paid over the years to Col. Johnstone the man who started the idea. He not only invited his fellow islanders to beautify their home surroundings, he also set a merciful pace for them to follow.

His large, scale stone and concrete models of some of Britain's most famous buildings, castles and cathedrals have long made his Woodleigh home at Burlington one of the province's top show places. Most interesting part of the development is that Mr. Johnstone and his son, Archie Johnstone, have done the work themselves.

Mr. Johnstone became the first president and carried on until 1960 when the task fell on the capable shoulders of Robert Szazelle of the Bunbury surgery.

**ATTRACTS ATTENTION**  
The program in this province attracted attention from just about every part of the country, it has been learned from Mrs. James Baldwin, secretary of the association.

Enquiries came for example from the Saskatchewan Rural Development Association back in 1959. It came through Miss Mary Robin who was supervisor of Women's Institutes here for some years.

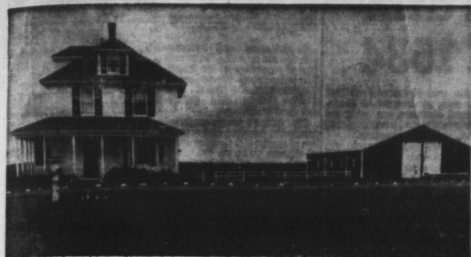
There were enquiries from Ottawa in 1960 when the Resource Centre for Tomorrow's coastline was being arranged. Requests for information came from the Business and Professional Women's Club in Sydney, Nova Scotia, in connection with a beautification project in Cape Breton.

The nationally known photographer, Malak, enquired about flower garden development after a Weekend Magazine story which featured the Rural Beautification program in June of 1959.

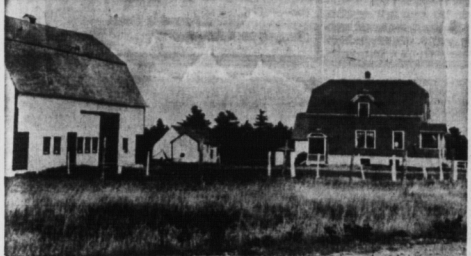
There have been enquiries recently from Canada's largest farm magazine.

**TWO DESIRES**  
The province wide interest which is shown in the program is appreciated by President Robert Szazelle, Bunbury, who has two particular desires to express.

He would like to see a some garage and service stations get rid of the collection of unsightly old car bodies they have around their premises.



MAN-MADE BEAUTY BLENDS WITH MOTHER NATURE'S HANDIWORK



P.E.I. BEAUTY PLAN ADDS TO ISLAND'S LURE FOR TOURISTS

# Thousands of visitors drawn to view four major attractions

History and romance, added to the natural beauty of the province, provide an atmosphere both inviting and invigorating to the island's many visitors. If there is any doubt of this, one has only to glance at the number of tourists registering at such places as the Confederation chamber, Green Gables, Woodleigh and the Montague museum.

At the Confederation chamber some 16,000 signed the visitors book last year. This is estimated, by general commissioner Forest Craig, as only a third of the number actually passing through.

A trip to Charlottetown is hardly complete unless one visits the room and views the surroundings, where early settlers sowed the first seeds of confederation. Here are to be found the original table and chairs used, in 1864, by the delegates. Here, too, are documents and photographs depicting a pre-confederation era. It is an inspiring and impressive arrangement, aptly explained by the commissioner in charge.

The island come not as strangers but as old friends. This is so because of the creator of "Anne of Green Gables" and of the delightful series of "Anne" stories which have popularized Prince Edward Island scenes and characters throughout the world.

Lucy Maud Montgomery, in private life, Mrs. Ewan MacDonald, was the author of "Anne of Green Gables", one of the world's best-selling and best-loved novels. Born at Clifton, P.E.I. Island, Nov. 30, 1874, she passed away on April 24, 1942.

The home of her grandparents in the National Park, at Cavendish, the original Green Gables in which she spent most of her childhood, is a landmark for tourists and devotees of the simple style and fresh imagination of the girl who lived and wrote there. Over 30,000 people are reported to have visited the "home" last year.

It is interesting to note that the National park had over 900,000 visitors with the number of campers placed in the vicinity of 38,800.

likened to the English countryside and many people from abroad are quick to mention this fact. This natural theme is given an impetus when a visitor to the province calls at Woodleigh, the estate of Lieut.-Col. E.W. Johnstone at Burlington.

Recreations of famous castles and churches, cottages and inns have been faithfully done to scale by Col. Johnstone whose one time hobby has become practically a life's work.

It is reported that 40,000 people, including children, visited Woodleigh last season. Over 25,000 adult tickets were sold. There is no charge for children.

This Spring, the Mill and the Floss will be added to the replicas, and a start has already

been made on a new castle, "Dunvegan". This replica will be 40 feet long and will require 100 tons of granite, and will be large enough to enter. "Dunvegan" is situated on the Isle of Skye, and is the oldest inhabited castle in Scotland, the home of Dame Flora MacLeod.

Much that is rich and vivid in the history of the island is brought to life for visitors through the Gardens of the Gulf resort located close to the water's outstanding attractions.

Established some five years ago as an expression of the way in which the island preserves its links with the past, the museum is enjoying a steady increase in public interest, both at home and abroad.

## "Wheel of Fortune Lodge"

at Fortune Bridge  
In Eastern Kings County  
will re-open June 1st!

This island summer hotel is picturesquely situated overlooking the beautiful Fortune River... and near salt water beaches and ocean swimming. Rooms with private basins and cool beds, continuous hot water. Our meals—second to none! Lounge has piano and TV. Rates, overnight, daily or weekly!

We cater to weddings, banquets and private parties. Reasonable rates. Phone Lorne Francis, Souris, 75-2.  
Mrs. Harry Francis, Proprietor

**MacKenzie's**  
HOUSE OF FASHIONS  
SUMMERSIDE, P.E.I.

Featuring  
... Ladies' and Men's English Jaeger Sweaters ...  
Scottish Tartans ... Hand Woven Woolens ... Prince Edward Island Tartans in all lines.

VISIT our  
Tartan GIFT BAR at The Tartan Restaurant,  
Summerside East.

## PRINCE COUNTY EXHIBITION

ALBERTON  
Now bigger than ever...  
AUG. 22 - 23

Two Big Days at the Prince County Exhibition at Alberton will sure add to your visit on P. E. I. See top bred Livestock getting judged while the lady of the house can examine Expert Handicraft Work.

- LIVESTOCK JUDGING
- HOME HANDICRAFTS
- RIDES FOR KIDS

Full Course Meals at Dinner and Supper.

Established in 1865  
Completely remodelled with two floors to serve you better in 1962.



# WELCOME to Prince Edward Island and for Vacation PICNIC FOODS

## Shop at GAUDET'S Save-Easy

Enjoy food savings on all your picnic food when visiting Prince Edward Island. Islanders find that you get more for less money and you will agree with them after your first visit.



AMPLE PARKING

FOR THE FINEST HOLIDAY OF YOUR LIFE

# It's The KINGSWAY MOTEL

ALL MODERN CONVENIENCES

Including Telephone Television — Radio Full Baths (with shower) and

Wall to Wall Carpeting IN EVERY ROOM!

## REASONABLE RATES

Children's Cribs and Play Area Available  
On Paved Highway — 2 Miles from Montague  
Reservations available by phone and mail.

Mr. & Mrs. E. J. Poole **KINGSWAY MOTEL**  
Proprietors

Send all replies c/o Cardigan P.O. P.E.I.



Homelike rooms — each with private bath. Large tastefully furnished dining room. Succulent food that's known everywhere for its excellence. Caterers to banquets and private parties.



- FRESH MEATS OF ALL TYPES
- TOP QUALITY FRUITS
- FRESH ISLAND VEGETABLES
- LARGE SELECTION OF FROZEN FOODS
- DAILY FRESH BREAD AND PASTRIES



# GAUDET'S SAVE-EASY

GRANVILLE ST. SUMMERSIDE