

PRICES  
EFFECTIVE  
APRIL  
16-17-18



**CLOVER FARM**

IT'S TIME FOR  
**Spring**  
HOUSE CLEANING

Brighten up your home and clean away the gloom of winter with your favorite Household & Sundry Supplies, Soaps, Powders and Detergents. Yours at traditional CLOVER FARM savings.

KING COLE  
TEA - 1/2's  
STANDARD  
53¢

CHRISTIE'S  
GRAHAM  
WAFERS  
31¢ PKG.

SURF  
"10c OFF"  
77¢ LB. PKG.

LESTOIL  
16 oz. 32 oz.  
45¢ 81¢

CINCY  
WALLPAPER  
CLEANER  
39¢ TIN

BULLDOG  
STEEL  
WOOL  
2 PKGS. 23¢

AJAX  
CLEANSER  
2 TINS 39¢

SPIC  
and  
SPAN  
LARGE SIZE  
43¢ PKG.

(DAISY)  
MONTMAGNY  
BROOMS  
99¢ EA.

JAVEX  
16 OZ.  
2 FOR 37¢

SILVO  
LARGE SIZE  
35¢ TIN

BRASSO  
LARGE SIZE  
35¢ TIN

CLOTHES  
PINS  
36 TO PKG.  
23¢

COTTON  
MOPS  
8 OZ.  
59¢

CROSBY'S  
MOLASSES  
GOLD ★

QTS. GALS.  
2 FOR 63¢ \$1.23

NABISCO  
SHREDDED  
WHEAT  
3 PKGS. 59¢

CHAMPION - 15 OZ.  
DOG FOOD 2 TINS 25¢

MONARCH  
CAKE MIX  
(FAMILY PACK)

White and Choc. 2 FOR 65¢

BLOOD DONORS ARE GOOD CITIZENS

CRISPYFLAKE  
SHORTENING  
2 PKGS. 49¢

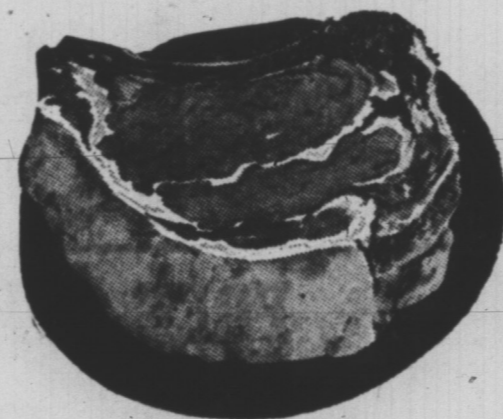
TOP QUALITY MEATS

DEVON  
SAUSAGE (BULK) ... 2 lbs. 69¢

TASTY  
PORK CHOPS ..... LB. 59¢

SIDE RIBS  
PORK FRESH!! ..... LB. 45¢

**BEEF** SHOULDER  
OR  
BLADE ROASTS **59¢**



BULK  
TEA ..... 1 LB. PKG. 69¢

HEINZ-16 OZ.  
GREEN TOMATO PICKLES . 29¢

MARVEN'S  
GINGER COOKIES . . . . PKG. 45¢

PETER PAN-20 OZ.  
PEACHES . . . . . 2 TINS 45¢

AYLMER-20 OZ.  
SLICED BEETS . . . 2 TINS 37¢

FROZEN FOODS

ZER-O-PACK-SLICED  
STRAWBERRIES 39¢

EAST PACK  
COD FILLETS 35¢

1/2 GALS.-ALL FLAVORS  
ICE CREAM 89¢

FRUITS AND VEGETABLES WITH THAT GARDEN-FRESH FLAVOR

SUNKIST  
ORANGES 5 lb. Bag 69¢

WASHED  
CARROTS 2 1/2 lb. Bag 29¢

FIRM-GREEN  
CUCUMBERS 2 For 29¢

RED  
RIPE  
TOMATOES  
23¢ PKG.

CLOVER FARM-16 OZ.  
SWEET MIX  
PICKLES 2 FOR 69¢

CLOVER FARM-20 OZ.  
APPLE  
SAUCE 2 TINS 43¢

PROCTER AND GAMBLE'S  
**NATIONAL CONSUMER RESEARCH POLL**  
GET DETAILS AT OUR STORE  
YOUR PRODUCT OPINIONS ARE WORTH \$5.00

**JOHNSON'S  
KLEAR  
QTS. \$1.19**

KING'S COUNTY  
JOHN FRANCIS  
Bay Fortune  
MRS. E. D. FRASER  
North Lake  
MATTHEW & McLEAN LTD.  
Bridgetown  
J. PETER MacPHEE & CO.  
Souris  
R. L. SANDERSON  
St. Peter's  
STEWART & BECK  
Montague

QUEEN'S COUNTY  
ATKINSON'S GROCERIA  
Charlottetown  
BROWN & MEEK  
French River  
PARKER CANFIELD  
Crapaud  
COURT & SON  
Bedford  
E. M. CUDMORE  
Oyster Bed Bridge  
ALBERT DENNIS  
Charlottetown

R. L. DICKIESON LTD.  
New Glasgow  
W. M. MacEWEN & SON  
New London  
MacGUGAN & BOYLE  
Hunter River  
A. P. GALLANT  
South Rustico  
S. S. INGS  
Cherry Valley  
H. S. MacLEOD & SONS  
Anson River  
LORD'S GROCERY  
Charlottetown

GROVE MacMILLAN  
Covehead  
DAVID S. ROSS  
Eldon  
SHAMA'S GROCER  
Charlottetown  
TAWEEL'S GROCERIA  
Charlottetown  
TURPIN'S GROCERY  
Charlottetown  
WEATHERBY'S GROCERY  
Charlottetown

PRINCE COUNTY  
ARSENAULT & GAUDET LTD.  
Wellington  
W. H. BURNS  
Malpeque  
RALPH CALLECK & CO.  
Central Bedouque  
S. D. DIXON  
North Tryon  
W. G. ELLIS  
Springfield West  
KEIR FRASER  
Alberton South

GALLANT GROCERY COMPANY  
Howland  
EST. J. P. GAUDET  
Richmond  
J. RAYMOND HARVEY  
Carleton  
P. J. & C. KENNEDY LTD.  
Kensington  
R. C. MacNEILL  
Tyne Valley  
RENNIE & WALLACE CO. LTD.  
Elmsdale  
DAN SAUNDERS  
O'Leary

**JOHNSON'S  
KLEAR  
PTS. 69¢**