

Woodleigh, Mic Mac Village, Museum rated high as attractions

Three of the Island's main tourist attractions are Woodleigh, Mic Mac Indian Village at Rocky Point in Queens County and the Montague Museum in Kings County.

"The place is the greatest show for fifty cents you will find anywhere in America," said Mr. Will B. Bird, author of *These Are the Maritimes*, published by Ryerson Press, Toronto.

WOODLEIGH REPLICAS
Everyone has at some time experienced a desire to travel in those romantic and historic lands which lie beyond the sea. Unfortunately such an opportunity does not always present itself. At Woodleigh, however, the large scale stone and concrete models of famous historical and literary landmarks, endeavor to provide a satisfactory substitute.

The grounds at Woodleigh have undergone a continuous creative process which has stretched over a period of some 30 years, but have been open to the public for only three. Already they have become one of Canada's outstanding attractions and are now visited by tens of thousands of people annually.

Featured among the scale replicas is a 12-foot model of Glamis Castle, famed for its association with Shakespeare's Macbeth. Mary Queen of Scots and as the Scottish child in a home of the Queen Mother and birthplace of Princess Margaret.

The Ye Olde Dragon Inn, a reminder of an institution which is typically and wondrously still in existence in large enough to enter York Minster, the most elaborate model erected to date, is 28 feet long and is complete with chimneys and sacred music. The thousands of pieces of colored glass in its windows give it an aura of absolute reality, especially when viewed in the evening when it is illuminated.

OTHER MODELS
Other models and attractions include: Ann Hathaway's Cottage with its thatched roof and lavender garden; the Penn Manor House with its Anglo-American associations; Shakespeare's Birthplace and Stoke Poges Church of Gray's Elegy fame. The visitor will also find a remarkable set of Double stocks and a Pillory, a Lily Pool with its multi-colored blooms and pond goldfish, a Washing Well and a Sundial.

The two gift shops, one of which is for children, provide a wide selection of gift items and souvenirs, suitable for child and adult alike.

The mill on the floss, with its overhead water wheel and rushing mill race, is scheduled for completion this year. There is no charge for children 15 and under. Open daily Except Sunday 8 a.m. until 10 p.m. Special rates on application for Bus Tours and Organizations. Grounds and models illuminated after dusk. (Many people prefer an evening visit.) You are invited to bring your cameras and to use them freely.

Syria, Iraq are in muddle

By ALEX EFTY
DAMASCUS, Syria (AP)—The governments of Syria and Iraq find themselves caught in a paradox. They crack down on Nasserites at home but press for union with President Nasser's United Arab Republic.

Behind it lies a grim power struggle between the ruling Ba'athist Socialists of Iraq and Syria and Nasser supporters for domination of the projected union of the three countries by next September. The rapidly developing deadlock threatens the federation, but no one country seems yet prepared to back out first.

The most damaging accusation that can be made against an Arab politician today is that of being a separatist or opponent of union.

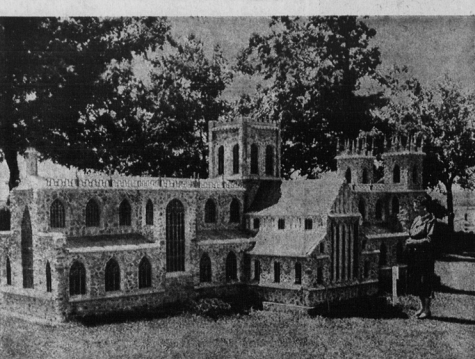
So the negotiations toward union continue, with Syria and Iraq pressing for a large measure of home rule in the federation and Nasser insisting that the Ba'ath party should submerge itself into a national front coalition including Nasserites in all three countries.

Baghdad radio said the Iraqi government had crushed a pro-Nasser plot and shot 10 military men and one civilian Saturday. It announced the arrest Monday of a pro-Nasser leader, Salam Ahmad, on plot charges. Syrian Ba'athists have been eliminating Nasserites for the last month and indulging in a war of words with Radio Cairo. Syrian Ba'athists put down pro-Nasser popular demonstrations earlier this month and later dismissed Nasserite Syrian army officers.

REMAIN COMMITTED

Ba'ath Socialists came to power in both Syria and Iraq early this year after military revolutions. They claim their revolutionary leadership has been threatened by Nasser supporters, but they remain committed to a loose federation with Nasser's U.A.R.

Informed sources believe the Syrian and Iraqi unity pledges depend on whether Nasser insists on sticking to his condition of a unified political front in Syria and Iraq. Cairo's press and radio have assailed Syria's Ba'athists but have cautiously avoided linking them with Iraq's. The Ba'ath leadership in Syria, however, has taken comfort in the fact that Nasser himself has kept quiet.



THOUSANDS VIEW MINIATURES AT WOODLEIGH ANNUALLY

HARNES RACING

in Prince Edward Island

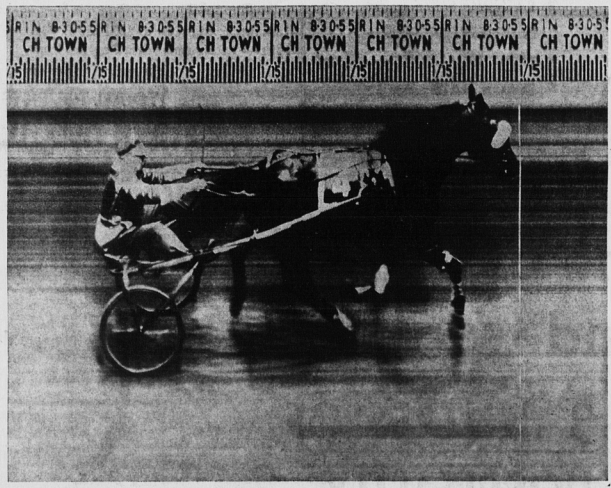
Rightly Named

"The Kentucky of Canada"

Night Racing Begins June 1 and Continues to October

Old Home Week and Provincial Exhibition

Aug. 12 To 17-11 Scheduled RACES



ANOTHER FEATURE . . .

Added This Year For First Time

The Charlottetown Driving Park grandstand is getting a roof shortly which will mean if during racing a shower comes on you will not have to leave your seats . . . plus at a later date heat is to be installed which means there is no need to be cold at any race event . . . while on P. E. I. we invite all tourists to visit our plant and enjoy P. E. I.'s greatest sport Harness Racing "The Sport of Kings".

THE CHARLOTTETOWN DRIVING PARK and PROVINCIAL EXHIBITION ASSOC.
Charlottetown, P.E.I.

for our early settlers, in whose memory the Garden of the Gull Museum has been dedicated. On the brow of the old post-office hill, overlooking the river, in Montague, Prince Edward Island, thousands of tourists during the past years have found it exciting, educational and entertaining to visit this structure, which is of a design long since vanished from the Canadian scene.

LITERARY CURIOSITIES
If you are anxious to see how your great grand parents carried water for a bath or if you wonder what they did for lights before the coal oil lamp, you may find out. There are literary curiosities which you may enjoy, a 1688 Bible to glance through, books published in the seventeen hundreds, letters written by Lucy Maud Montgomery, old journals, text books manuscripts, documents, indentures and wills. Almost anything from the old days may be found in an assortment of interesting collections. There are old clocks, some hand made with all wooden works. Replicas and pictures of boats depicting the crude transportation system of an earlier era take the attention of many. Primitive implements for the farm are in evidence.

There is something to delight and amuse each member of the family, so those whose foresight gave the town, Kings County and the Province this Museum are happy to invite you to enjoy the richly deserved memorial to our ancestors, with its items of historic value, most interesting, some rare and all souvenirs of the past, with its hardships and its glory.

The Micmac Indians were a proud and noble race. Historians describe them as lovers of peace but never hesitant to avenge when provoked into battle, but the courage displayed by their

warriors was enough to strike terror in the hearts of other New Brunswickers, to the tribes of the western plains.

The original Micmacs were of the Wabanaki tribes and spoke the Algonquian tongue. In early summer of each year they came to Prince Edward Island to fish and hunt. Their winters were spent on the mainland where game was more plentiful.

They called the Island "Abegweit Misigoi" — meaning Island Cradled in the Waves.

The children will be thrilled to meet Chief Red Cliff and fascinated by the many relics

Micmac Indian Village unfolds the interesting story of a famous Indian tribe prior to the coming of the white man to the shores of Prince Edward Island. In recreating this village—the only one of its kind in eastern Canada — no effort was spared in trying to attain authenticity. From the myths and legends of history came the birch bark wigwams, hunting and fishing implements, council place and a 200-year-old birch bark canoe which take you back to the dawn of history.

The children will be thrilled to meet Chief Red Cliff and fascinated by the many relics

and enjoy a picnic in a wooded area of the encampment. Picnic tables are available. The village is located in a scenic setting at Rocky Point one of the lovely Island communities on the southern shores of the province across the harbor from Charlottetown. It is reached by paved Highway Route 19 and is only a short drive from most resort areas.

Open daily June 15 to September 15.
GIFT SHOP
The Indian Crafts Gifts Shop contains an excellent selection of Indian Arts and crafts collected from Indian reservations in all parts of Canada. Whether you come merely to look or to buy, you will find a wide choice of souvenirs and genuine hand-craft Indian work.

COVESIDE COTTAGES

8 housekeeping cottages, comfortably heated. All modern conveniences!

located 100 yards from the beach. In good fishing locality.

Reasonable Rates

LOWER MONTAGUE
Phone 61-41

Slowacres Lodge

At Tea Hill on scenic shore route, 3 miles east of Charlottetown overlooking Hillsborough Bay.

- Spacious Grounds
- Safe Sandy Beaches
- Ideal Family Vacation

Telephone Ch'town 894-7912 after June 22

Charlottetown R. E. 1