

CHURCHES

(Continued from page 10)

WINSLOE UNITED Pastoral Charge. Combined Church Service and Sunday School at Highfield 11 a.m. Princeton Road 7.30 p.m. Winsloe North 7.30 p.m. Rev. T.R. Goudge, minister.

HAZELBROOK — Alexandra Baptist Pastorate. Services Sunday, April 4 Hazelbrook 11 a.m. The juvenile choir will sing at the service. Alexandra 7.30 p.m. Lic. Jerry Cole, minister.

THE PRESBYTERIAN Church. St. John's, Belfast. Service of Worship 11 a.m. Rev. Donald Nicholson, minister.

THE PRESBYTERIAN Church. Wood Islands. Service of Worship 7.30 p.m. Rev. Donald Nicholson, minister.

THE PRESBYTERIAN Church. Central Parish. Services of Worship: Clyde River 11 a.m. Nine Mile Creek 3 p.m. Rev. Sterling Stackhouse will conduct the services. Rev. Donald Nicholson, interim-moderator.

CORNWALL United Church Pastorate. Cornwall 11 a.m. Kingston 3 p.m. New Dominion 7.30 p.m. Sunday School, Cornwall 10 a.m. Hi-C Group 8.30 p.m. Rev. I.L. Walls, minister.

BRADALBANE PASTORAL Charge. the United Church. Worship: Bradalbane 11 a.m. Pleasant Valley 1.30 p.m. North Granville 3 p.m. Rev. Thomas Evans, minister.

HAMPTON Pastoral Charge. the United Church. Bonshaw 11 a.m. DeSable 2 p.m. Victoria 7.30 p.m. Rev. Bryer R. Jones, minister.

COVEHEAD Pastoral Charge. the United Church. Services Sunday, April 4. Stanhope 11:00 a.m. West Covehead 7.30 p.m. Rev. R.H. Baxter, minister.

NEW LONDON Pastoral Charge. Mid-week prayer meeting Wednesday at 8 p.m. Services Sunday, April 4. Geddie Memorial 11 a.m. Long River 2.30 p.m. St. John's, New London 8 p.m. Rev. Leslie Files, preaching.

VERNON — POWNAL Pastoral Charge. the United Church. Minister, Rev. W. E. Grant. Sunday services as follows: Vernon-River 11 a.m. Cherry Valley 2.30 p.m. Pownal 7.30 p.m. The Men's Choir will lead the service of praise at the evening service with Mr. Lloyd Martin as guest soloist. Come yourself — and bring a friend.

FREE CHURCH of Scotland. Worship: DeSable 7.30 p.m. Mr. David Compton will conduct the service. Rev. Ewen E. MacDougall, interim-moderator.

CAVENDISH PASTORAL Charge. the United Church. Worship: Stanley Bridge 11 a.m. North Rustico 2.30 p.m. Sermon will be preached under the Lenten Easter theme, "The Cross of Christ Condemns Us All To Be Saints." Rev. Frank B. Stiles, BA, BEd., BD., minister.

MT. HERBERT United Church. service at 2.30 p.m. Rev. Gerald G. Wyrwas, minister.

FREDERICTON — Bradalbane Churches of Christ. Bible School 10 a.m. Combined Service at Fredericton 11 a.m. Cavendish Baptist Church, Worship 3 p.m. New Glasgow Christian Church. Bible School 10.00 a.m. Evening Worship 7.30 p.m. Mr. Merle Zimmerman, minister.

MT. STEWART — St. Peter's Bay Charge, the United Church. Mt. Stewart: Public Worship 11.15 a.m. Senior Sunday School 10 a.m. Junior Sunday School 11.30 a.m. Morel: Public Worship 9.45 a.m. Senior Sunday School 10.45 a.m. Junior Sunday School 10.45 a.m. St. Peter's Bay: Public Worship 7.30 p.m.

FREE CHURCH of Scotland. Service at Stanchel 2 p.m. Rev. W.R. Underhay, minister.

PRINCE

TRYON — BONSHAW United Baptist Pastorate. Services Sunday, April 4: Tryon: Sunday School 10 a.m. Worship 11 a.m. Westmoreland: Worship 3 p.m. Missionary Rally at Summerside at 7.30 p.m. All are encouraged to attend. Rev. Edward G. Britten, pastor.

KENSINGTON Presbyterian Church Pastoral Charge. Kensington Church 11 a.m. Free-town Church 3 p.m. Keir Memorial, Malpeque, 7.30 p.m. Rev. George R. Tannahill, minister.

FUNDAMENTAL BAPTIST Church. Bedeque. Morning Worship 11 a.m. Sunday School 12 noon. Evening Worship 7.30 p.m. Prayer and Bible Study Thursday 8 p.m. Pastor, Rev. Bernard Toner.

NORTH TRYON Presbyterian Church. Service Sunday, April 4 at 11 a.m. Conducted by Miss Mary A. MacKenzie, Presbyterian. Rev. Donald Nicholson, interim-moderator.

PRINCETOWN — LOT 16 Pastoral Charge, the United Church. Morning Service Princeton 11 a.m. Evening Service, Lot 16, 7.30 p.m. Minister, Rev. Frederick Lloyd.

TRYON CHARGE, the United Church. Sunday, April 4. Sunday Schools: Tryon 10 a.m. Crapaud 10 a.m. Service of Worship: Tryon 11 a.m. Crapaud 3 p.m. Cape Traverse 7.30 p.m. Rev. A. O'Brien, minister.

MONTROSE Pastoral Charge. the United Church Brown Jar-

12 The Guardian, Charlottetown, Thurs., Apr. 1, 1965.

dine, minister. Miminegash 11 day School 11 a.m. Worship 7.30 a.m. Montrose 3 p.m. Elmsdale 7 p.m.

ALBERTON AND West Point Presbyterians. Services, April 4: Rev. L.R. Files, interim-moderator. Mr. J. Donald Ross, supply. Alberton: Sunday School 10.30 a.m. Morning Worship 11 a.m. West Point: Worship 2.00 p.m. Sunday School 3 p.m.

ALBERTON Pastoral Charge, the United Church. Rev. David MacDonald, minister. Cascompec: Worship 11 a.m. Tignish: Worship 2 p.m. Alberton: Sun-

BEDEQUE Pastoral Charge,

the United Church. Rev. R.M. Camera, minister. Albany: Church school 9 a.m. Worship 7.30 p.m. Bedeque: Church School 10 a.m. Worship 11 a.m. and 11 a.m. Worship 3 p.m.

THE ANGLICAN Church, Parish of New London. 8 a.m. Holy Communion St. Mark's, Kensington. 9.30 a.m. Holy Communion, St. Thomas, French River. 11 a.m. Holy Communion, St. Stephen's, Burlington. 7.30 p.m. Evening Prayer, St. Mark's, Kensington. Rev. E.J. Fiander, rector.

ANGLICAN SERVICES. Par-

Merger Would Create Largest U.S. Rail System

WASHINGTON (AP)—Merger of the U.S. east's two railway titans into a Pennsylvania-New York Central system—largest in the United States—was recommended here by interstate commerce commission examiners.

The proposed merger has been opposed by the U.S. justice department on the ground it would reduce competition. Penn. with assets of \$3,000,000 realized a net income last year of \$52,000,000 on revenues of \$907,000,000. Central's net income was \$35,000,000 on revenues of \$733,000,000. Its assets were listed as \$3,380,000,000.

The New York Central runs to Montreal but the Pennsylvania operates wholly in the U.S.

MERGER OPPOSED—The proposed merger has been opposed by the U.S. justice department on the ground it would reduce competition. Penn. with assets of \$3,000,000 realized a net income last year of \$52,000,000 on revenues of \$907,000,000. Central's net income was \$35,000,000 on revenues of \$733,000,000. Its assets were listed as \$3,380,000,000.

The Penn. Central system would serve 14 states, the District of Columbia and Canada and most major U.S. cities between the East Coast and the Mississippi.

The proposed merger clearly outweighs any injury they concluded. Their recommendation goes now to the full 11-member commission for consideration that may take another year. If the full ICC approves, the "The over-all benefits to be

TRIMMED MEAT MEANS MORE MEAT TO EAT!

JOHNSON'S KLEAR LIQUID WAX 32 OZ. TIN **1.09**

SILVER BRIGHT SALMON LB. **69c**

MARGARINE IN STOCK
FINEST QUALITIES
LOWEST PRICES

FROZEN FOODS
McCain Poly Peas 2 LBS. 45c
Highliner Haddock Fillets LB. 43c
Highliner Fish Cakes . . 12 OZ. PKG. 29c
Frozen Orange Juice 3 6 OZ. TINS 99c

CRINO INSTANT MILK POWDER 3 LB. PKG. **1.10**

E. D. SMITH'S CHERRY PIE FILLING 20 OZ. TIN **37c**

NEW CRISCO COOKING OIL 24 OZ. **69c**
LIPTON'S CHICKEN NOODLE SOUP MIX PKGS. **25c**
CLARK'S YELLOW EYE BEANS . . . 2 20 OZ. TINS **59c**
SALADA PRIOR PARK TEA BAGS . . . 90's PKG. **83c**

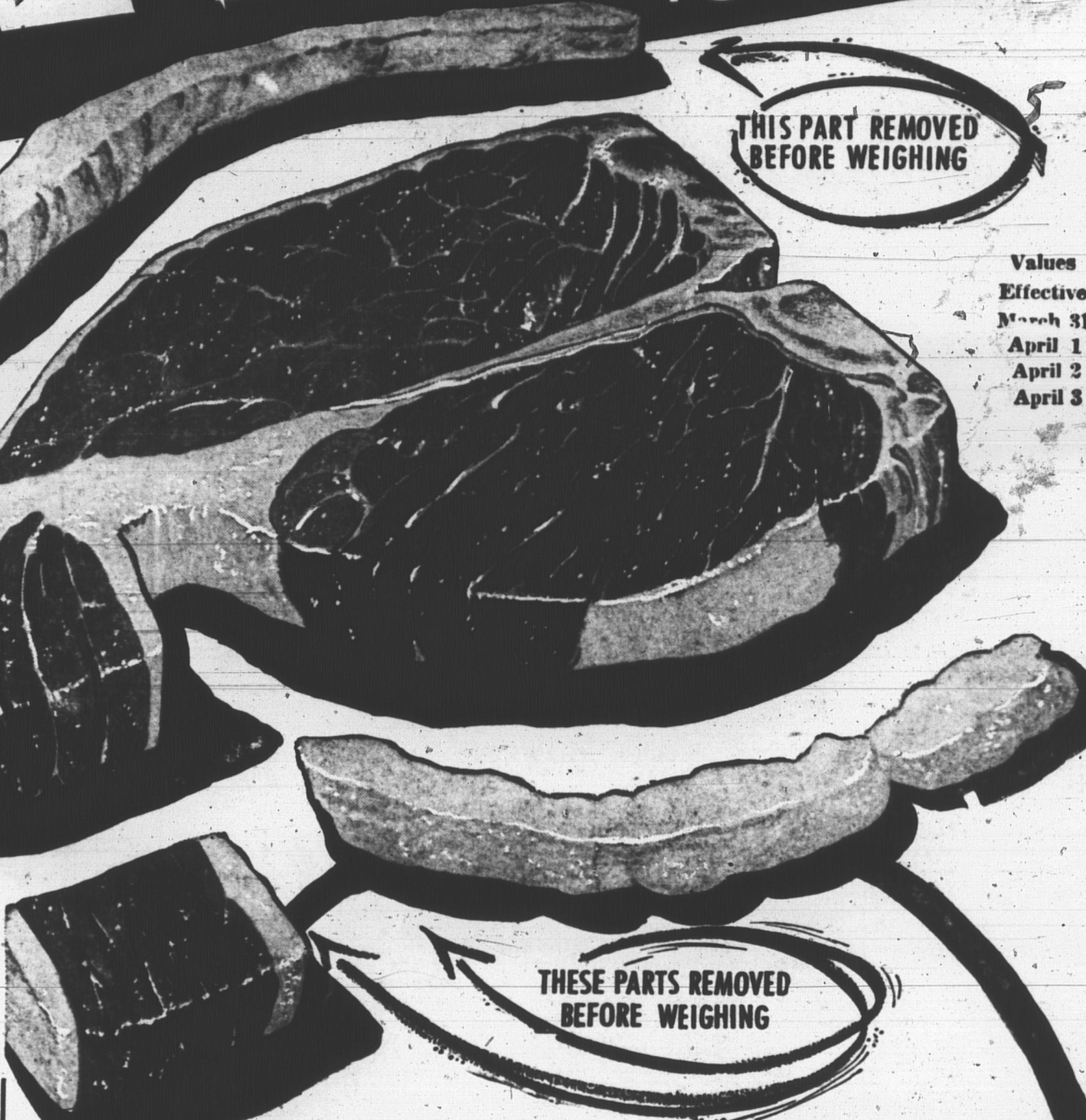
BRIGHT'S FANCY Tomato Juice 48 OZ. TIN **39c**
GIANT SPIC & SPAN . . . **99c**
BON AMI JET SPRAY . . . 15 OZ. TIN **69c**
GIANT SIZE OXYDOL PKG. **99c**

HUNT'S Catsup 2 11 OZ. BTLs. **39c** | **PINK SAL PINK Salmon** 1/2 LB. TIN **33c** | **YORK CREAM Corn** 5 20 OZ. TINS **\$1.**

Twinkle Cake Mix | Luncheon Meat Kam | FINE GRANULATED WHITE SUGAR
2 PKGS. FOR 45c | **2 12 OZ. TINS 79c** | **10 Lbs. For 87c**

AND ARE THEY FRESH. VEGETABLES
SPARKLE TOMATOES . 2 PKGS. FOR **45c**
ROSEBUD FANCY SPINACH PER PKG. **29c**
B. C. WINEBAP APPLES PER DOZ. **49c**
U. S. CANTELOPES EACH **29c**

AYLMER DICED BEETS 4 15 OZ. TINS **55c**
BRIMFUL CHOICE TOMATOES . . 2 28 OZ. TINS **59c**
DARE ASSORTED COOKIES . . . 3 PKGS. FOR **\$1.**
CORDON BLEU CHICKEN . . . 3 7 OZ. TINS **99c**
QUAKER KING SIZE MUFFETS . . . 2 PKGS. FOR **69c**
SCHWARTZ PEANUT BUTTER 16 OZ. JAR **45c**
SCHARTZ PREP. MUSTARD . . 2 6 OZ. JARS **35c**



GOVERNMENT INSPECTED CLUB or ROUND STEAK 63c
SIRLOIN OR T-BONE STEAK 69c

Open Thurs. Fri. and Sat. Nights

QUANTITY RIGHTS RESERVED

KRAFT Products Sale
CHEESE WHIZ 2 LB. JAR **\$1.19**
CHEESE SLICES 2 LBS. FOR **99c**
MIRACLE WHIP SALAD DRESSING . 16 OZ. JAR **39c**
STRAWBERRY OR RASPBERRY PURE JAM 24 OZ. BTL. **79c**
PILLSBURY BISCUITS 2 PKG. FOR **25c**
MARMALADE 2 9 OZ. JARS **49c**

Avon Apple Juice | York Wax Beans
3 48 OZ. TINS \$1.00 | **6 15 OZ. TINS 95c**

ELLIS BROS. SAVE-EASY

Rump Roast . . . PER LB. **59c**
SIRLOIN Tip Roast . . . PER LB. **73c**
PICTURE PAK Devon Bacon . . PER LB. **69c**
S. P. MAPLE LEAF CRYOVAC Cottage Rolls . . PER LB. **59c**