

Application Forms, Appointments for Interviews and Additional Information are available for the following at the Canada Manpower Centre on Campus, Room 102, Main Building.

ATTENTION GRADUATING STUDENTS - RECRUITERS ON CAMPUS

Oct. 23 - Peat, Marwick & Mitchell, Chartered Accountants - Interested in Graduates who plan to follow the C.A. Program.

Oct. 27 - Can. Imperial Bank of Commerce - Interested in BBA & BA Graduates for Management positions.

Oct. 27 - Royal Bank of Canada - Interested in BBA Graduates for Management positions.

Oct. 28 - Auditors Dept. Province of P.E.I. - Interested in BBA, BA Economics & BSc Math Graduates who plan to follow the Chartered Accountants Program.

Oct. 28 - Xerox of Canada Interested in Graduates of any discipline for Marketing positions.

Oct. 29 - Zellers Ltd. Interested in BBA Graduates for Management positions.

Oct. 30 - H.R. Doane & Co. Interested in BBA & B.Sc. or B.A. Economics Graduates who plan to follow the C.A. Program.

Oct. 31 - Can. General Electric - Interested in BBA or B.Sc. Math Graduates for careers in Financial Management.

REMINDER

Public Administration Exams - Oct. 21, 7.00 P.M. NA3.

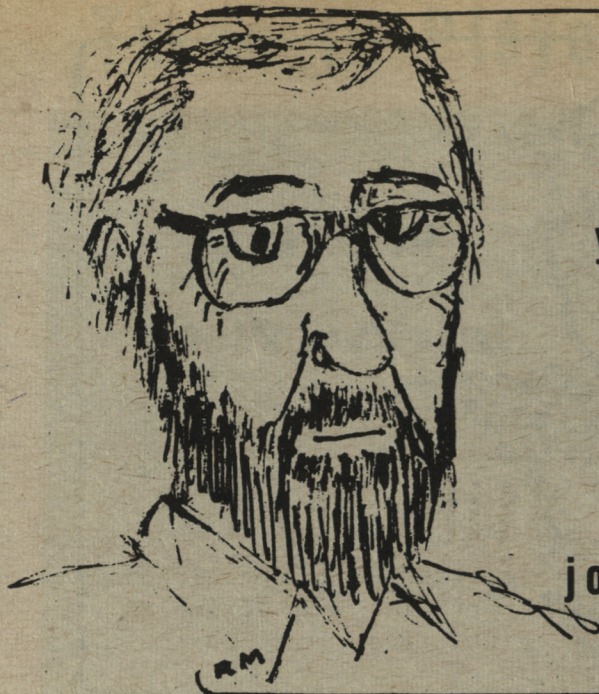
Foreign Service Exams Oct. 22, 7.00 P.M. NA3.

SUMMER EMPLOYMENT '76

Park Interpreter Employment with Parks Canada. Open to any student, especially those interested in outdoor environment. Application Forms must be completed and returned to CMC(OC) no later than Nov. 3.

1976 Olympic Games Positions available for bilingual (French and English) hostesses and guides. Application Deadline Nov. 30, 1975.

National Research Council Summer positions in various laboratories in various Canadian locations for Science and Engineering students. Application Deadline Nov. 21, 1975.



improve your games

john jenkins

Holdup Play At Three No Trump

NORTH			
S	AQ76	H	54
D	AQ75	C	AK3
SOUTH			
W	S 854	S	K2
E	H KQ1098	H	J62
S	D 4	D	J1092
T	C 7652	C	J10987
SOUTH			
S J1093			
H A73			
D K863			
C Q4			

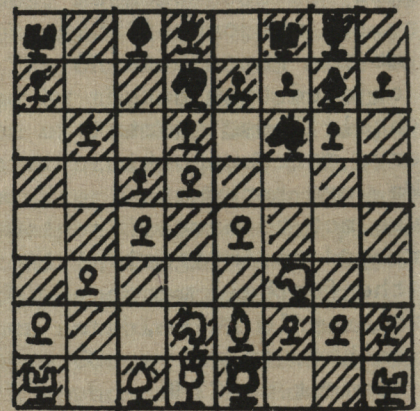
North-South Vul. BIDDING

West	North	East	South
Pass	1C	Pass	ID
Pass	2S	Pass	2NT
Pass	3NT	Pass	Pass
Pass		Pass	Pass

West's opening lead is the K of Spades. South looks at the hand and knows immediately that the only problem

is going to be in Spades. South can take eight tricks off the top with a possibility of ten or eleven. The only thing that can harm him is a five - three (or worse) spade split. If they split four - four then at most the opponents can take is three spades and the king of diamonds. If however, the spades do split 5-3 then South is down one if the king of diamonds is offside.

Therefore, to maximize the chances of making the contract, South must hold up his ace of spades until the third round. Thus when East wins with the King of Diamonds, he cannot lead back a spade. He'd like to, mind but he is now out. Whatever East returns, South wins and easily makes his contract with overtricks.



King	1	1
Queen	1	1
Bishop	1	1
Knight	1	1
Rook	1	1
Pawn	1	1

King's Indian Defense - Tricky Maneuver

This is a position which can occur quite frequently in the King's Indian defense to the Queen's Gambit. There are three ways white can go from here. He can castle

Queen side, or he can castle king side, or he can refuse to castle at all. If he castles king side, the game will generally be a tight defensive game with plenty



You wouldn't dare

Photo: Gordon Pierce

of subtle maneuvering. If white castles queen side or refuses to castle at all, the game is usually characterized by sharp pawn attacks. White attacks black's king side and black attacks white's queen side., promising sharp, intense action.

The chess club meeting may be held in Marion Hall this Monday, stay tuned to CIMN for the latest announcement from the office of the Cadre.

MAGIC CARPET SERVICE

The Linkletter



XMAS HOLIDAYS ARE COMING SOONER THAN YOU THINK - BOOK YOUR FLIGHT EARLY. S'SIDE CHTOWN MONTAGUE 4 36-2744 892-4148 838-3134

STUDENTS:

Support The Retarded Children's Association

Volunteers will be going through the residences selling pencils in aid of these children.

Show You Care