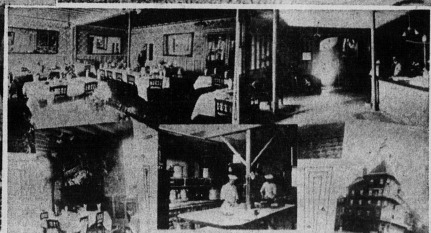
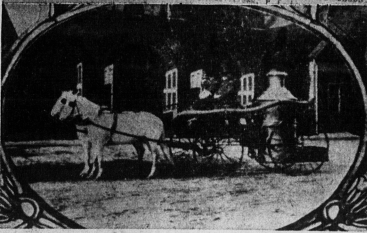
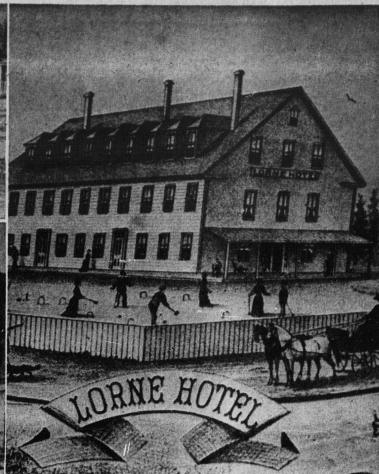
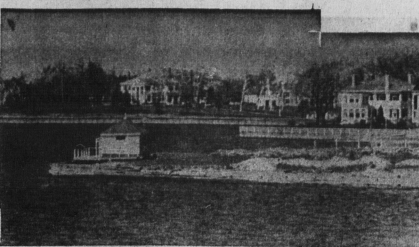




**THE TREMENDOUS** changes the past 100 years have brought to Prince Edward Island, and particularly to Charlottetown, its capital, are graphically portrayed in the pictures of eras long ago. While so much in the past is recorded in history for future generations to read and study, the century just gone brought vast changes in day to day living which may only be known by comparison.

Top left is "Smardon's Corner," where Grafton and Great George Streets intersect and where the Capitol Theatre now stands. Below it is one of the famous old mills which once were important parts of Island life. The Tryon Woolen Mill had a history top is part of the city waterfront not too long ago and in the middle is a mercantile establishment which played a part in the business life of the middle and late 1800's. Bottom centre illustrates the giant strides made in fire protection as it shows the city fire department's old "Silsby" fire engine of the turn of the century.

How tourist accommodations have moved ahead is demonstrated by pictures on the right showing famous hotels of bygone days. The top photo is of the Lorne Hotel at Tracadie Beach, while the bottom shows the Victoria Hotel, a widely known Charlottetown stopping place during the first quarter of this century.



# FATHERS of CONFEDERATION MEMORIAL BUILDINGS

**INCORPORATED IN 1911**

**BUILDING SUPPLY SPECIALISTS**  
Serving Charlottetown and Districts



MacDonald & Rowe was incorporated in 1911 and was in business many years before that date. It has given us great satisfaction to have been able to serve you the public over the past years and trust we can serve you in the future years.

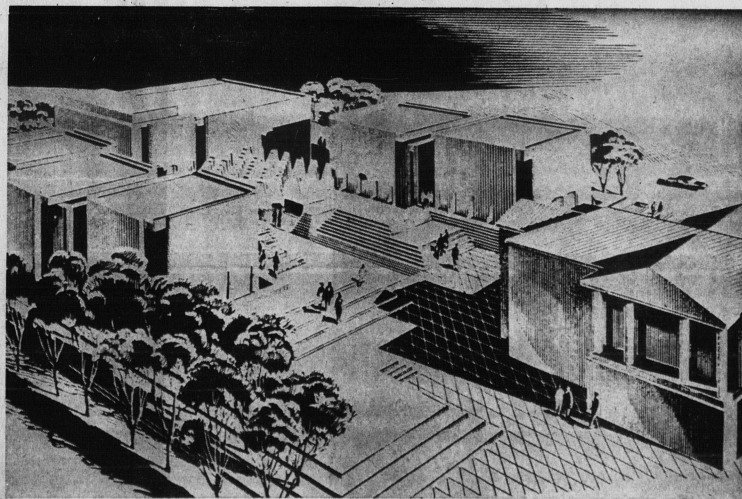
"SPECIALISTS IN HOME IMPROVEMENT"

**MacDonald & Rowe  
Woodworking**

CO. LTD.

WATER STREET

DIAL 4-8575-8576



The new Fathers of Confederation Centre in Charlottetown, a multi-purpose \$5,600,000 complex built with funds raised in equal amounts from the ten provinces and the federal government is situated within convenient walking distance of hotels, motels and shopping area. Parking for four hundred cars is available on Grafton Street, west of Queen. Along with its beautiful art gallery, museum, and library space, Confederation Centre has extensive accommodation for convention groups, conferences, service club meetings and associations. Confederation Centre Theatre seats 1,070, the Lecture Gallery 250. In addition, by the use of sliding doors, the Centre can convert the theatre foyer into four functional and attractive meeting rooms. Catering and restaurant facilities—ranging from coffee and luncheon service through to full banquets—are available within the complex. For information regarding reservations, prices, etc., please write or phone Confederation Centre, Charlottetown, 892-2464.

IN THE HEART OF CHARLOTTETOWN, P. E. I.