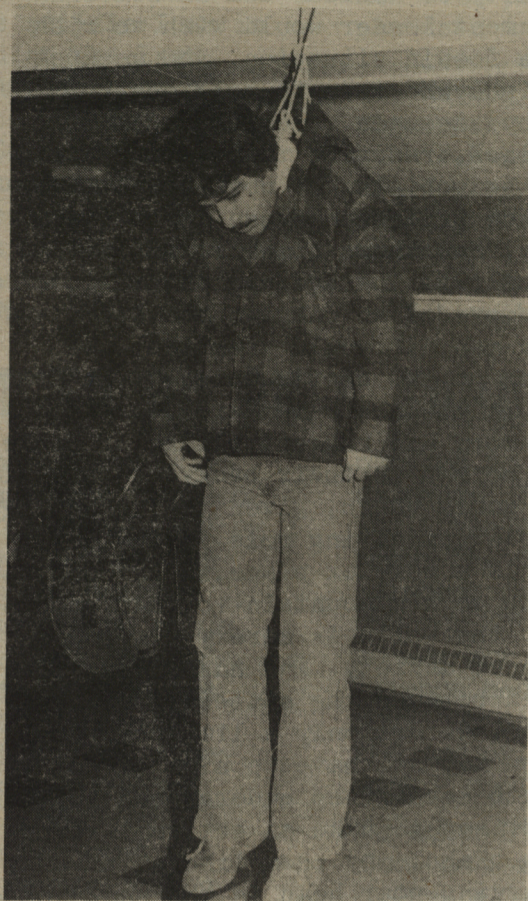


CARNIVAL WHEN



You are sure you are going to have a hang over in the morning.



You show up for class in the Barn.



Your middle name becomes Alpine.

WICKER EMPORIUM

75 Queen Street



CHARLOTTETOWN'S LITTLE CHINATOWN

WICKER FURNITURE, BASKETS, BLINDS AND DRAPES,
NOVA SCOTIA PINE FURNITURE, TINWARES, GLASS-
WARE GIFT ITEMS, AND THE ONLY HEAD SHOP FOR
THE ISLAND.

TEN PERCENT STUDENT DISCOUNT

OPEN DAILY EXCEPT SUNDAY 10:00 a.m. - 6:30 p.m.
FRIDAY 10:00 a.m. - 9:00 p.m.

Master of Business Administration

at Saint Mary's University

Saint Mary's University offers a Master of Business Administration program that can be completed on either a full-time or part-time basis. Applications are now being accepted for part-time studies beginning either in May or September 1980, and for full-time studies starting in September 1980.

Individuals interested in learning more about the program and its entrance requirements are advised to write to or telephone the following:

**Director of Admissions
Saint Mary's University
Halifax, Nova Scotia B1H 3C3
422-7361, ext. 242/243**

Since all applicants are required to take the Graduate Management Admission Test (GMAT) they should telephone the University as soon as possible.