

Ch'town takes on festive air as Christmas season nears

A tour around the business section of the city reveals that the Yuletide season is just around the corner, and shoppers are now being reminded that they have only so many days left to purchase their Christmas gifts.

In former years the lights were strung on trees on top of the meters. This year's method is an effort to discourage vandalism. The big Christmas tree alongside the former library building will not make its appearance this year.

pre-Christmas sales and setting up the merchandise and decorations for the season. A good many establishments have already completed or are in the process of displays.

No announcements have yet been prepared concerning the Christmas season store hours. Seasonal store hours are not expected to go into effect until after Dec. 1, however.

Trust Companies Merge Services

MONTREAL (CP) — The Morgan Trust Company of Montreal and the Metropolitan Trust Company of Toronto Monday announced a business alliance combining their trust services in Canada.

The presidents of the two companies, J. Bartlett Morgan and John R. Campbell, closed in a joint statement the signing of a mutual agency agreement for Canadian operations and their intention to expand existing trust services at home and abroad.

Morgan Trust was formed in 1916 in Montreal and Metropolitan was formed last June in Toronto. Morgan Vice-President John E. Smith recently joined the Metropolitan board of directors following a stock investment in Metropolitan by his firm.

The Morgan family interests are being consolidated preparatory to entering new areas of investment. A new mortgage brokerage division has been incorporated into the trust operation.

Canadians, but not five trade missions in a month covering the same field."

Christmas Flowers

● poinsettias
● azaleas
● mums

Order now for Christmas delivery

SIDMOUNT GARDENS

Dial 4-3219

Fancy Pastries

Perfect for Christmas

PUDDINGS
POUND CAKE
LIGHT FRUIT CAKE

FRESH RICH-MOIST

FRUIT CAKES
SPECIAL COOKIES

SQUARES
DOUGHNUTS

STEWART BAKERIES LTD.

161 Kent St. Dial 4-8551

Greek Ordered To Quit Russia

MOSCOW (AP) — Petros G. Molyviatis, second secretary of the Greek Embassy here, was charged with spying Monday and ordered to leave the Soviet Union. He is the second Greek diplomat ordered out on such charges in the last three weeks.

A Greek Embassy spokesman said the Russian protest against Molyviatis was "rejected by the Embassy and a counter-protest filed."

"We believe the obvious aim of their actions is to cut any relations and will initially serve the province of Quebec."

existing contact between the Greek Embassy and the Greek population in the Soviet Union," he said.

The Soviet charges, published in the Soviet government news paper Izvestia, said Molyviatis had attempted to get Soviet and Greek citizens living in Kazan and Uzbekistan to gather information for him. About 20,000 Greeks live in the Soviet Union, having settled here before the Second World War.

The Greek Embassy consul, George Ventilasios, was expelled Nov. 2.

BIG TERRITORIES
The Yukon and the Northwest Territories occupy 39 per cent of the surface of Canada.

Parkdale Pharmacy



GIFTS for ALL!

- Christmas Records
- DuBarry Gift Sets
- Smiles 'n' Chuckles Chocolates
- Cameras and Camera Supplies
- Coty Gift Sets
- Electric Shavers
- Table Lighters
- Playing Cards
- Character Guidance Toys
- Yardley "Flair" Perfume & Cologne
- Brush, Comb and Mirror Sets
- Pen and Pencil Sets
- Hair Brushes
- Little Lady
- Evening In Paris Cosmetics
- Old Spice for Men
- Fancy Soaps
- Manicure Gift Sets

OPEN
10 a.m.-10 p.m.
EVERY NIGHT

PARKDALE PHARMACY

161 Kent St. Dial 4-8551

YOUR Best FASHION Christmas

Woolen Dresses Cocktail DRESSES

In various shades, and also Ideal for party going, up double knit. They are very to the minute styles in stylish for winter fashion. sheath or full skirt. You Ladies drop in and see our can have them in crepe of large selection. Sizes 7-19. sheer, all to enhance the figure, let our staff show you our range. Sizes 7-19.

The FASHION Shoppe
141 Great George St. Phone 4-3355

twined around the poles, and this is expected to be done next week. The lights will probably be turned on around the first of the month, city officials say.

Production Drives Work With Slight Overlapping

By ALAN DONNELLY OTTAWA (CP) — When it comes to industrial expansion campaigns, everyone seems to be ready to go. The federal government's production-booster don't mind in the least.

The federal trade department has its own vit promotion campaign to get Canadian industry to "Buy Canadian" and export more.

Just about every provincial government has its own program, varying in emphasis and effort but all with the same goal of increasing production in their existing industries and attracting new factories.

All these efforts are fitting in without too much overlapping, says Bert C. Barrow, assistant deputy minister of trade.

"There's so much work to be done that it doesn't matter very much if there is some duplication," he said in an interview.

URGES CLOSER LOOK

Mr. Barrow's current campaign is an effort to get Canadian industries to buy more of their supplies, parts and equipment from Canadian sources.

This was the main theme of a national industrial expansion conference held here in September and a similar regional conference at Montreal early this month. Other regional conferences are planned at Hamilton Dec. 12 and in western Canada early next year.

Prime exhibit at these conferences has been the "Northern Electric" campaign which began in 1956 to seek Canadian sources of supply for more than 8,000 items formerly imported.

The company reduced its import list to fewer than 1,000 items. The result: Some \$11,000,000 in annual purchases switched to Canadian suppliers.

ADD NEW TWIST
At the Hamilton conference, another twist will be added—the story of a St. Thomas, Ont., firm that exploited the idea of licensed manufacturing deals with American producers.

Mr. Barrow said the company, Jaeger Machine Company, expanded its output by convincing American manufacturers that Jaeger, by making their products in Canada, could make more money for the American firms.

Some of them, notably Ontario John E. Smith recently joined the Metropolitan board of directors following a stock investment in Metropolitan by his firm.

At the Hamilton conference, another twist will be added—the story of a St. Thomas, Ont., firm that exploited the idea of licensed manufacturing deals with American producers.

ATTENTION CHRISTMAS SHOPPERS

We have a complete line of Satin Bound Blankets, including Reversible, Pastel Shades, Checks, also Auto Robes, including Island Tarian, made from 100% Pure Virgin Wool. A deposit will hold any blanket until Christmas. Boxes supplied if required. Orders mailed anywhere in Canada.

WM. CONDON & SONS
65 Queen Street, Charlottetown, P.E.I. Dial 4-8712

SACRED HEART HOME IS ONE OF CITY'S NEWEST BUILDINGS

Ch'town street department launches huge paving job

A large scale paving program designed to keep city streets in line with the rapid development and growth of Charlottetown, was undertaken this past summer.

When the program was completed all city streets except those in the new development areas in the north and north west sections of the city, had been paved. In all a little over one mile of asphalt was laid, and at a substantial saving over prices paid for work the previous year.

In addition to the paving, a number of streets, with a complete length of about 700 miles, were shalod and gravelled. These streets are for the more part, in the new development areas and will be paved

when the areas served by the streets are sufficiently developed to permit paving.

The city is hesitant to pave these streets too quickly because later building construction will necessitate cutting up the pavement. The streets are prepared, nonetheless, and will be paved when the conditions warrant it.

The streets paved this year included Upper Queen, from Kirkwood to Nassau, Newland Crescent, Prince Charles Drive from Goodwill Ave. to St. Clair, a portion of St. Clair Street and Viceroy Ave. from Goodwill to Prince Charles.

One street, Jordan Crescent, was prepared for paving this season, but with a main construction was delayed and the asphalt.

paving had to be postponed, probably until next summer.

City engineer Norman F. Stewart said the past summer was one of the worst experienced by roadbuilders in many years and contractors were constantly held up, and forced in some cases to do some jobs two or three times as rain turned graded streets to mud.

In addition to the paving, a comprehensive patching project was carried out putting some of the older paved streets on a par with new streets. A new patching method was tried in some areas with success. The method calls for a complete light resurfacing of damaged streets rather than the usual practice of filling holes with asphalt.

Tax Revision Advocated To Aid Canadian Control

HALIFAX (CP) — Tax changes designed to reverse the trend of non-Canadian control of Canadian economic life were advocated Monday night by Liberal MP Walter Gordon of Toronto.

Gordon also called for a "heavy money policy" as an essential first part of a more expansionist government approach, which would mean readily-available credit at interest rates kept as low as possible having regard to prevailing U.S. rates.

Mr. Gordon, member for Toronto Westport and chairman of the 1956 royal commission on Canada's economic prospects, addressing the Port of Halifax committee.

Text of his speech was provided to the press before delivery.

He said the trend of non-Canadian economic control would be reversed "gradually and over a period of years by appropriate changes in our tax laws." He added:

DISCOURAGE SELLING

"These changes should be designed to discourage Canadians from selling Canadian resources and Canadian companies to foreigners, and at the same time to encourage foreigners and foreign corporations to sell their assets back to Canadians in the years and decades ahead."

In a related field, Mr. Gordon said:

"Perhaps it would seem unreasonable to expect Canadian subsidiary companies of U.S. firms to be permitted to promote the export of Canadian products in areas where they

OVER TWO

(Continued from page 17) time, and expected to occupy much of the winter period, are plans for provision of new reservoir storage, either in the centre of the city or close by. The superintendent said there were several alternative sites under review, and before a choice was made many factors had to receive consideration.

The reservoir proposed will be of 1,750,000 gallon capacity to provide an emergency supply in the event of a temporary breakdown in the supply reaching the city. It is several pumping stations. Work on the reservoir remains a strong possibility for next year but a preliminary report will depend on the overall program and the importance of the various phases of the work.

The work is practically completed for this year as there are many things which obviously cannot be done during winter months. However, Mr. Manue said, there remains an additional 700 feet of six-inch pipe to be laid along Kent Street, and the same amount of this size on Churchill Avenue, from North River Road to Ambrose Street.

NORMA'S

LADIES WEAR...



For winter warmth and gifts check our selection of Hats, Wools, Fur Fabric and Shags.

Look over our stock of night wear. Baby Doll Pyjamas, Capri Pyjamas, Capri Night Gowns.

We have a good range in gloves, leather palm drivers gloves, all leather dress gloves, fabric gloves and woolen for young and old.

Need a new purse? This is the place to see a complete selection of everyday purses to evening purses.

MEN

We at the store wish to help you in every way possible to choose a Christmas gift for the woman in your life. We will be having a stag night during the shopping season, so watch the paper for date and time.

Let our clerks show you our FUR DEPT. In stock we have Sumatno with mink trim collars, Lambrary coats, Borg Seal in 3/4 length — and shorties.

it's Party time!

DRESSES

Cocktail Dresses in the newest shades and designs. The latest chiffon over lace in a metallic design.

WOMEN'S WEAR

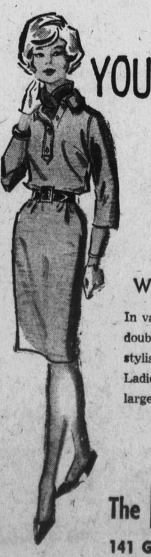
160A Kent Street Phone 4-3058

WOMEN'S WEAR
160A Kent Street Phone 4-3058

FURS

to layaway

Let our clerks show you our FUR DEPT. In stock we have Sumatno with mink trim collars, Lambrary coats, Borg Seal in 3/4 length — and shorties.



YOUR Best FASHION Christmas
Woolen Dresses Cocktail DRESSES
In various shades, and also Ideal for party going, up double knit. They are very to the minute styles in stylish for winter fashion. sheath or full skirt. You Ladies drop in and see our can have them in crepe of large selection. Sizes 7-19. sheer, all to enhance the figure, let our staff show you our range. Sizes 7-19.