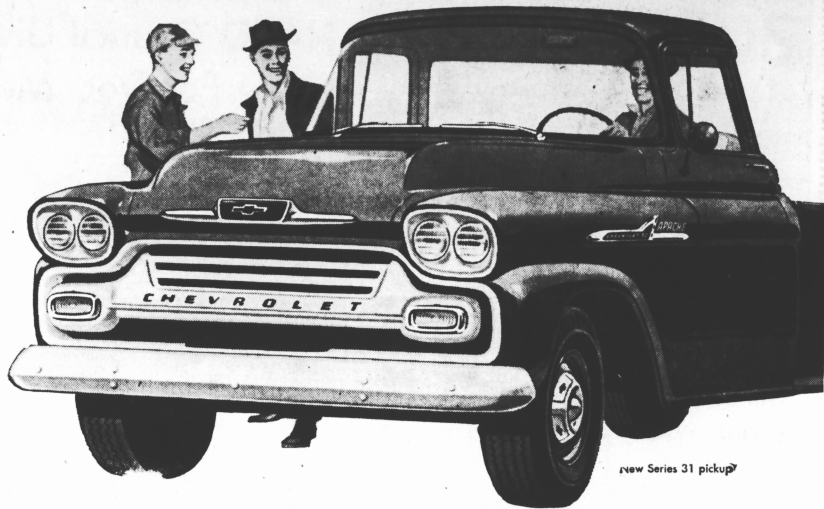


Here!

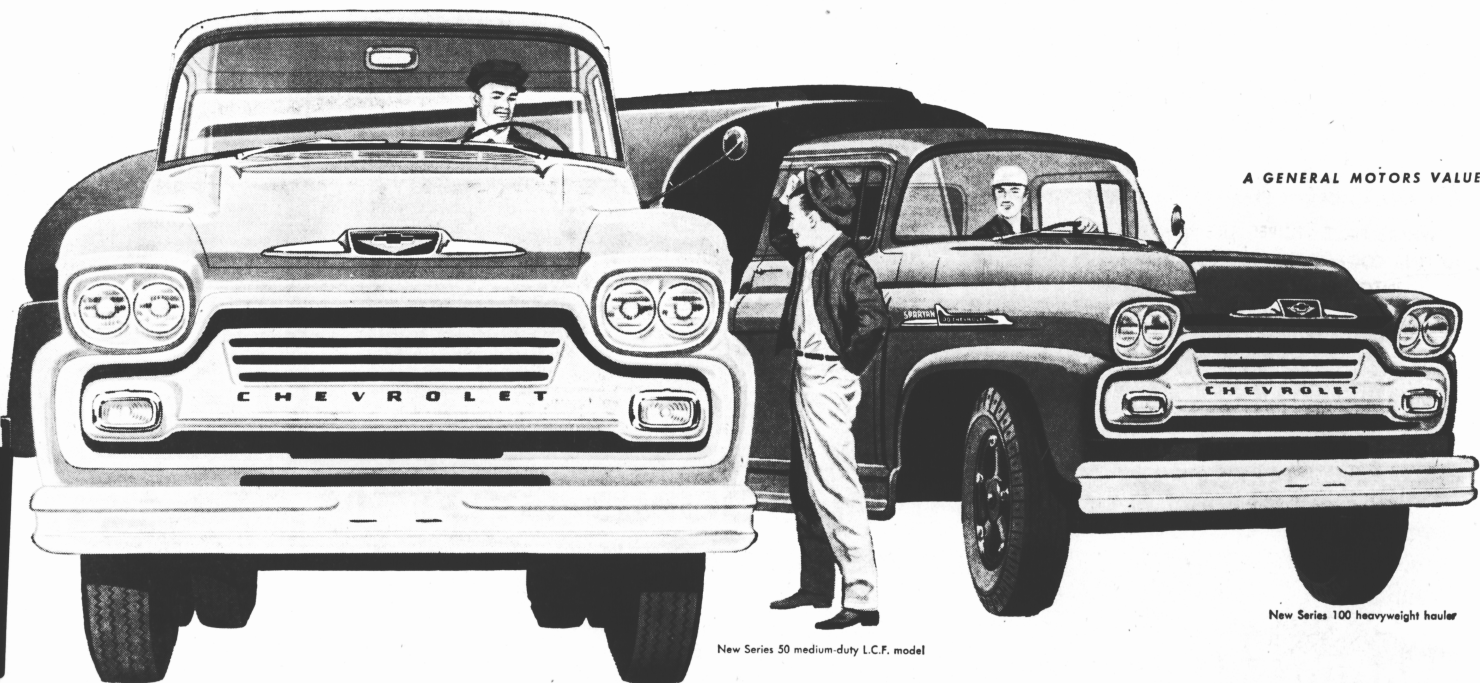
Latest editions of the
"Big Wheel" in trucks with

NEW HUSTLE!

NEW MUSCLE! NEW STYLE!



new Series 31 pickup*



A GENERAL MOTORS VALUE

New Series 50 medium-duty L.C.F. model

New Series 100 heavyweight hauler

Here with new broad-shouldered styling, a revolutionary new V8 engine, great new models! Here to speed schedules, whittle down operating costs! Here to handle the toughest hauling jobs with new fast-working efficiency! Chevrolet's Task-Force '58 rolls in with new hustle, new muscle, new style in all three weight-class series . . . with more sure ways to stay and save on any kind of schedule! You'll find new Step-Van Forward Control delivery models complete with Step-Van bodies. A wider choice of medium-duty haulers. New cab conveniences in all models. Higher efficiency horsepower right up the line, including a radical new V8 development for Task-Force heavyweights. It's the biggest, brawniest Chevrolet fleet ever assembled — at your Chevrolet dealer's right now awaiting your inspection!

New Light-Duty Apaches*

Offering high-capacity pickups and panels, sure-footed 4-Wheel Drive models and, Chevrolet's latest . . . a new "Step-Van" Forward Control model with 8', 10' and 12' body lengths! Famous fuel-saving 6's with increased horsepower are standard in the Apache Series. A more powerful Trademaster V8, with 160-h.p., is optional at extra cost in conventional light-duty models.

*3100 through 3800 series

New Medium-Duty Vikings*

Nine new models have been added, all featuring a new cab-to-rear axle dimension for better load distribution in specialized uses. Short-stroke V8's are standard in all middle-weight Low Cab Forward models. Conventional models are powered by the latest versions of Chevrolet's most famous 6's. Heavy-duty options increase GVW ratings up to 21,000 lbs!

*4000 through 6000 series.

New Heavy-Duty Spartans*

The big news here is Chevrolet's rugged new 348 cu. in. Workmaster V8-standard in Series 90 and 100 models. Its radical new Wedge-Head design assures peak efficiency even with regular grade gasoline! The 283 cu. in. Super Taskmaster V8 is standard in Series 70 and 80 models. Cast-spoke wheels are now standard in all Spartan models and full-air brakes are optional at extra cost.

*8000 through 10,000 series.

See them at your dealer's now!

NEW CHEVROLET '58 TRUCKS

DOWD MOTORS LIMITED