

**IN OUR FAMILY
AYLMER
Tomato Soup
is
FIRST
CHOICE**

**for True Tomato
Flavor!**

says Mrs. A. J. Anderson



"Give us Aylmer for true tomato flavor"
SAY BARRY AND SKIPPIE



"We're always hungry for more Aylmer, too"
RONNIE AND PAUL



**YOUR FAMILY DESERVES
AYLMER QUALITY**

**NORTH AMERICAN LIFE
L. S. STEVENSON
BRANCH MANAGER
140 RICHMOND ST.
A MUTUAL COMPANY**

Nash Announces Golden Anniversary Models

TORONTO, June 5 — Original design with a European flair, notes Nash Motors' new 1952 Ambassador and Canadian Statesman Gold Anniversary models announced today.

Styled by Pinin Farina, world-renowned custom body designer, the new cars will be displayed in dealer showrooms throughout the country tomorrow (June 6). The introduction marks Nash Motors' 50th anniversary, its Kenosha, Wis., plant having started production of Rambler automobiles in 1902.

"The new Pinin Farina-styled Nash cars demonstrate that extensive hand built European custom car design can be applied to Canadian mass production," according to T. S. Adams, General Manager, Nash Motors of Canada Limited. "Pinin Farina has the rare ability to visualize a new design as a finished car. He works directly in sheet metal on a wood skeleton dispensing with the usual full scale models in clay and plaster, as well as mahogany mock-ups."

Pinin Farina is famous in the foreign custom car field for having designed more individually styled custom bodies than any other designer in the world, Adams said.

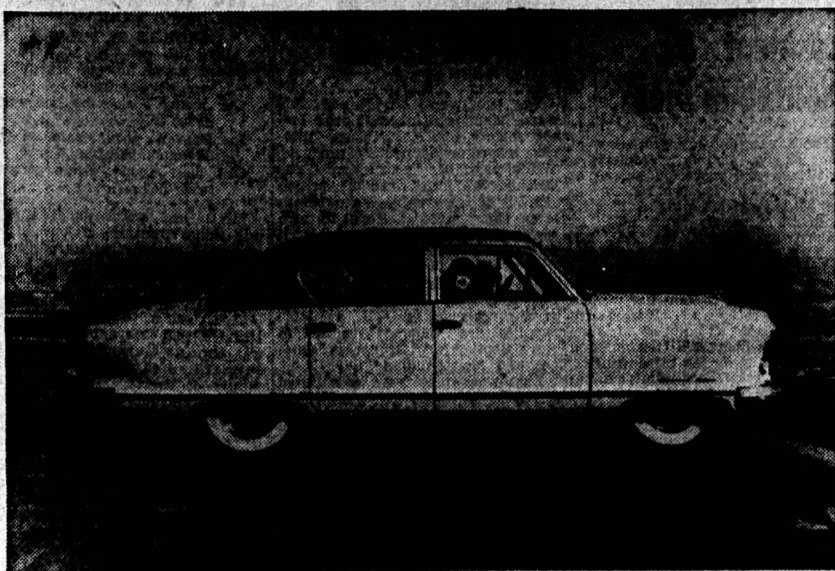
In addition to emphasis on styling, the 1952 Nash models feature: new type "Airflex" front-end suspension; increased roominess and improved comfort; "Road Guide" front fenders and lower hood for greater visibility and safety; increased engine horsepower; safety instrument panels; glass area increased up to 25 per cent, and other advancements aimed at performance, comfort, safety and economy.

Outstanding design innovations aimed at function, as well as beauty of line, are offered in the new 1952 Nash cars. Increased visibility is achieved by a hood line that is lower than the front fender lines. The wider and lower hood provides a balanced frame for the grille, creating a new type front-end beauty.

Adams said: "The fender-hood line is carried past the windshield into the interior, in effect becoming an integral part of the instrument panel. As in the case of Nash Motors' experimental NX1, 'Road Guide' front fenders, easily seen by the driver, rise above the hood line."

"The 1952 Nash models offer de-

NASH MOTORS GOLDEN ANNIVERSARY MODELS FOR 1952



Original design with a European flair combined with American engineering advances is featured in the new 1952 Nash Golden Anniversary Statesman and Ambassador models. The new Canadian Statesman model shown was styled by Pinin Farina, internationally famous European custom body designer.

Farina's influence on design has been a news spotlight of Paris and other European Auto Shows for years.

Delicately curvaceous surfaces and brisk lines are distinctive features of Farina styling in the New Nash Canadian Statesman. Increased "Eye-Level Vision", greater interior roominess and sleek custom body lines highlight the new car. Mechanical changes include dual-range Hydra-Matic, increased horsepower, and an advanced new type independent front-end "Airflex Suspension".

sign unity and simplicity not dependent for elegance and beauty upon excessive chrome ornamentation," Adams said. "In Pinin Farina's unique styling the hood line, fender line, body line blend

as a harmonized whole, like fine sculpture which must please the eye from every direction under all lighting conditions. We call it "Flying Sculpture". It always looks alive and "right", streaking down the road or at the curb, whether

viewed from front, side or back." Farina is under exclusive contract to Nash Motors. His crest, symbol of royal appointment, adorns custom bodies on almost every leading car chassis made in Europe.

May Be First Million Dollar Baseball Deal

By Joe Reichler
NEW YORK, June 4 —(AP)—Tuesday's nine-man swap between Detroit and Boston Red Sox may go down in the books as the first \$1,000,000 player deal in the history of baseball.

Probably never before has a trade been completed between two big league clubs involving more players of regular status. It may not contain the likes of such great stars as Babe Ruth, Jimmy Foxx, Lefty Grove, Roger Hornsby, Mickey Cochrane, Tris Speaker or Joe Cronin—just to mention a few memorable trades involving great names. But it makes up in the number of established athletes what it lacks in the magic of a single outstanding name.

There is no doubt that today's trade that sent George Kell, Hoot Evers, Johnny Ligon and Dixey Trout to the Red Sox in exchange for Johnny Pesky, Don Lenhardt, Walt Dropo, Bill Wright and Fred Hatfield is the biggest in many years—if not of all time.

The only previous transaction that rivals this one in the number of players involved was the Tigers St. Louis Browns exchange of 1939. In that one Detroit acquired Bobo Newsome, Roy Bell, Ralph Kress and Jim Walkup from the Browns for Mark Christman, Vernon Kennedy, George Gill, Bob Harris and Roxie Lawson. That, too, involved nine players but Newsome was the only real big name.

Fight Facts And Figures

PHILADELPHIA, June 4 — (AP) — Facts and figures for Thursday's heavyweight title bout between champion Jersey Joe Walcott and Ezzard Charles: Date—Thursday, June 5. Site—Municipal Stadium. Participants—Jersey Joe Walcott, Camden, N. J., champion, vs. Ezzard Charles, Cincinnati, challenger.

At stake—World heavyweight boxing championship. Distance—15 rounds. Officials — Referee and two judges to be named at ringside by the Pennsylvania Athletic Commission.

rated a \$250,000 player by general manager Charlie Gehringer of the Tigers. He is regarded as the greatest third baseman in the game today.

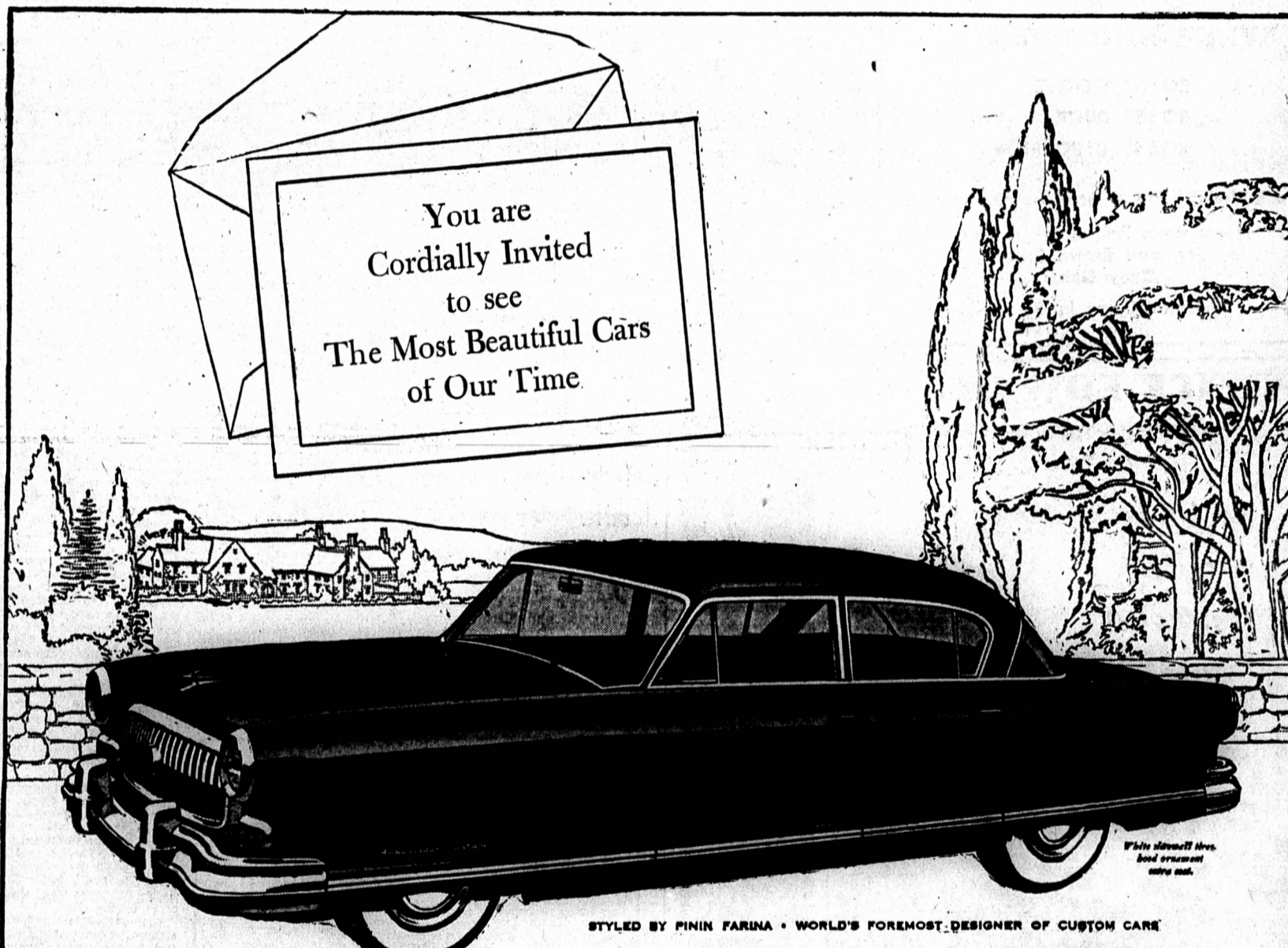
The other eight range anywhere from \$35,000 to better than \$100,000. Each, with the exception of Trout, Evers and Pesky, is 30 or under with several good years ahead. Trout is 37, Pesky 32 and Evers 31.



EXPORT
CANADA'S FINEST
CIGARETTE

WOOD ISLAND-CARIBOU FERRY SERVICE
SAILINGS MAY 1st TO JUNE 15th INCLUSIVE DAILY (including Sundays). STANDARD TIME.
From each terminal 8 and 11 a.m. — 1 and 5 p.m.
For full information contact Head Office at Charlottetown, where, by making application at least 48 hours in advance, reservations may be secured for first and second sailings, each day from each terminal.
For daily report listen to CFCY each morning following first News Broadcast 6:30 S.T., 7:30 D.S. Time.
CATCH AN EARLY CROSSING AND AVOID DELAY.
NORTHUMBERLAND FERRIES LIMITED.
CHARLOTTETOWN, P. E. I.

Refrigeration
SALES AND SERVICE
Repairs To All Makes
MOTORS
Rewinding and Repairs
ELECTRICAL
APPLIANCE
Repairs
Palmer Electric
PHONE 1444



You are
Cordially Invited
to see
The Most Beautiful Cars
of Our Time.

STYLED BY PININ FARINA • WORLD'S FOREMOST DESIGNER OF CUSTOM CARE

Presenting the 1952 Golden Airflytes

Today, we are presenting, for your personal pleasure, the most beautiful and exciting motor cars of our fifty years . . . The Nash Golden Airflytes for 1952.

Come see these beautiful cars styled by Pinin Farina! Come see the continental sweep of line, the rakish flair, the fabulous creation of the greatest custom car stylist in the world today!

Come see the widest seats, the deepest windshield, the greatest Eye-Level visibility ever combined in one automobile!

Come hear the exciting news about a new Super Jetfire Engine with Direct-Draft Horizontal Carburetion . . . even more powerful than last year's speed record holder.

Come try Airflex handling and steering ease that's magic itself . . . and a choice of three transmissions, Conventional, Overdrive and the new Dual-Range Hydra-Matic Drive.

Yes, come and see a thousand and one new ideas in cars that are completely and entirely new, from road to roof—the finest of our fifty years! Now on display, ready to see and drive at your Nash dealer's.

Genuine Nash parts on the 1952 Golden Airflytes—Ambassadors, Statesmans and Ramlers—are interchangeable with Nash products throughout the world.



PININ FARINA
TORIN, ITALY
Motor car designer for
royalty, winner of
more than one
hundred Grand Prix
awards at International
Auto shows.



GREENE'S GARAGE

ST. PETER'S ROAD CHARLOTTETOWN

MAKE DAD KING for A DAY

It's Not Too Early To Think About That Gift For DAD.

Men's SHIRTS	2.25 to 7.50
Men's PYJAMAS	3.50 to 5.95
Men's SPORT SHIRTS	2.50 to 7.50
Men's SHIRTS & SHORTS	49c to 1.25
Men's TIES	75c to 2.00
Men's Straw and Gabardine HATS	2.50 - 2.95
Men's SWIM TRUNKS	2.95 up

20% OFF ALL MEN'S SUITS & TOPCOATS
FROM NOW TILL FATHER'S DAY
Make DAD happy with one of these fine Suits or Topcoats.

Use Our Lay-Away Plan—A Small Deposit Will Hold Any Garment.

The GREENDAL CO. LTD.
MEN'S STORE 144 GREAT GEO.