

BURGESS BEDTIME STORIES

By Thornton W. Burgess

COUSIN GRAY GETS EVEN

Though satisfaction lies that way just getting even doesn't pay. —Old Mother Nature.

Gray Fox, own cousin to Reddy Fox, was in a bad temper. Yes, he was in a bad temper. He was up in a tall tree over in the Green Forest. He had climbed that tree to get away from Bowser the Hound. He hadn't wanted to climb, but doing this was the easiest way of getting rid of that dog. He was at a bad temper because his cousin in the red coat was the cause of Bowser chasing him. It was a smart trick played by Reddy Fox.

It was this way. Quite by accident he had fallen in with Reddy Fox, the latter was being hunted by Bowser the Hound. Gray Fox had crossed the Crooked Little Path as Reddy was running along it. When Reddy reached the place where Cousin Gray had crossed, he turned off and followed. Then Reddy had made a jump off to one side before Bowser came in sight, and Bowser hadn't noticed there was any difference in the trail. He had gone on following Cousin Gray until the latter finally had climbed a tree.

"It was a mean trick Cousin Reddy played me. Yes, sir, it was a mean trick. I was minding my

own business. I wasn't interfering with him. I suppose he thinks he's smart," said Gray Fox, talking to himself.

Bowser the Hound knows when he is beaten. He knew that it would be a waste of time to wait for that Fox to come down out of the tree. Also, he guessed that Reddy Fox had tricked him. So he had taken the back trail to try to find where Reddy had left it. It took him some little time, but he did find it. Then once more his deep voice rang through the Green Forest as he followed Reddy's new trail. High up in the tree Cousin Gray grinned. He guessed just what had happened. He listened happily to the steady baying of Cousin Reddy until he wears his toenails out," declared Gray Fox, as he started to climb down out of that tree.

Now the two cousins are not friendly; neither likes the other. Reddy is the smartest, and he knows it. Cousin Gray knows it, too. Perhaps that is one reason why he dislikes his cousin in the handsome red coat. Anyway, they avoid each other as much as possible. Reddy feels that Cousin Gray has no business in the neighborhood. Reddy has lived there all his life. His father and mother lived there before him, and his grandfather and grandmother. On the other hand,



It was a mean trick Cousin Reddy played me.

Gray Fox moved into the neighborhood from farther south where his family before him had always lived.

One day Gray Fox got into trouble on a neighboring farm. He tried to catch a chicken, and was surprised by a dog which immediately gave chase. Like Bowser, this dog was a Hound, known as a Fox Hound, because specially trained to hunt foxes. Away went Cousin Gray with the dog baying behind him. Perhaps he remembered, when raising partner, you not only counted your high cards (an ace at 4 points, a king at 3, a queen at 2, a jack at 1) but you added 1 point for every card over 3 cards in every suit.

For a nutrup takeout of partner's suit-bid, count only your high cards.

Contract Bridge

By Josephine Culbertson

Mrs. Culbertson continues the presentation of the new Culbertson, point-count method.

Takeouts of Partner's Opening Suit-Bid

When your partner opens with a suit-bid of one and you respond by bidding a different suit or no-trump, you are making a takeout. And, since there is no assurance of a fit between the combined hands, as there was in the case of your raising partner's suit, you must calculate your values on a slightly different basis. Remember, when raising partner, you not only counted your high cards (an ace at 4 points, a king at 3, a queen at 2, a jack at 1) but you added 1 point for every card over 3 cards in every suit.

Requirements for Notrup Takeouts

As a rule, a notrup takeout of partner's suit-bid of one, like an opening notrup, should be made only on hands of balanced distribution, i. e., there should usually be no singleton, and almost never a void suit.

A response of one notrup should be made with 6 to 10 points. With fewer than 6 points—pass. (Needless to say, the one-notrup response is not a strong or an encouraging call.)

The following represent minimum and maximum hands on which to respond with one notrup to partner's one-spade opening:

- ▲ K 6
- ◆ K 10 7
- ◆ 7 5 4 3
- ◆ 8 6 4 2
- ▲ K 3
- ◆ A 7 5
- ◆ K 5 4 3
- ◆ 7 5 4 3

With 13 to 15 points, and with no marked suit-takeout, respond with a jump to two no-trump. Inferentially, this bid announces stoppers in the three suits other than the one partner has bid, although there are occasions when the two notrup has to be risked with stoppers in only two suits.

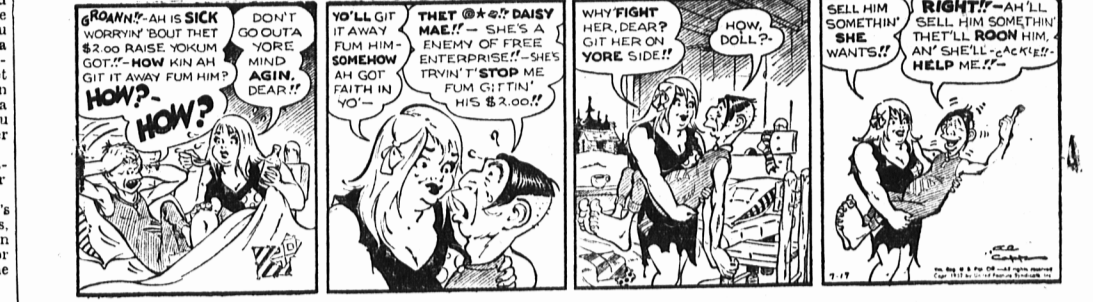
A jump takeout of partner's suit-bid to three notrup is not contrary to a widespread misconception—a "closing bid." The very idea is ridiculous! This three-notrup response shows from 16 to 18 points, and while it is not actually forcing, it would scarcely make sense for the responder to want his partner to pass if partner had about 17 points of his own!

KING OF THE ROYAL MOUNTED



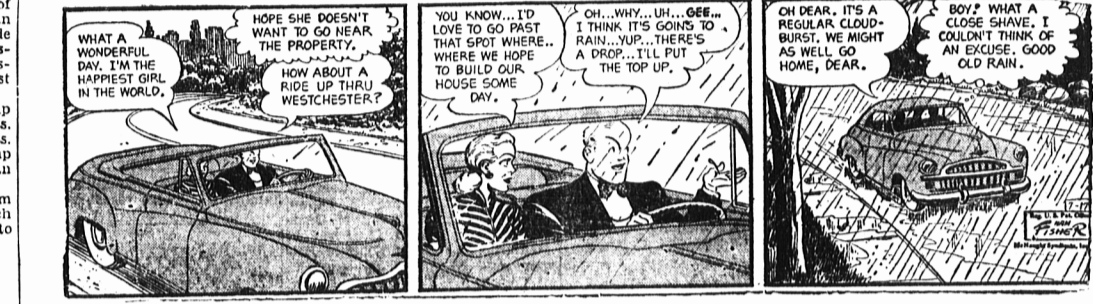
By Al Capp

LIL' ABNER



By Ham Fisher

JOE PALOOKA



By Bob Gustafson

TILLY THE TOILER



By Edwina

TIPPY AND "CAP" STUBS



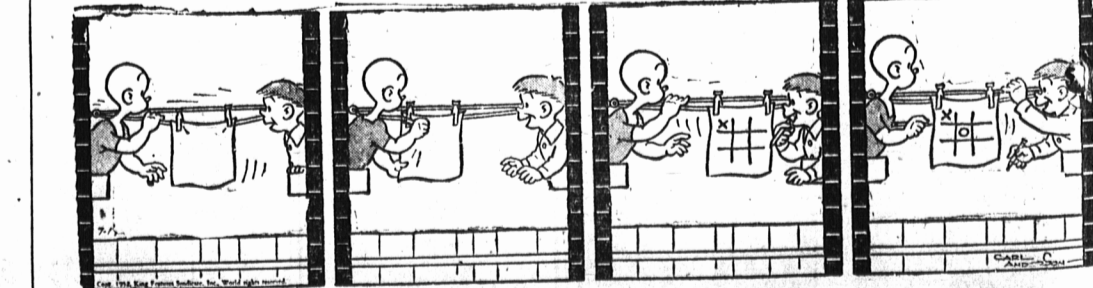
By George McManus

BRINGING UP FATHER



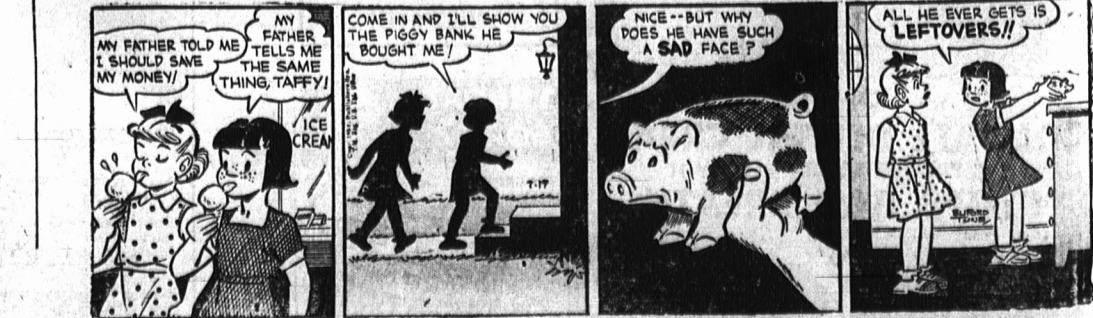
By Carl Anderson

HENRY



By Ruford

DOTTY DRIPPLE



POGO



By Walt Kelly

Napoleon and Uncle Elby



By Clifford McBride

RIP KIRBY



By Alex Raymond

PENNY



By Harry Hoehnigen

WOOD ISLAND-CARIBOU FERRY SERVICE

SAILINGS JUNE 14 TO SEPT. 28 INCLUSIVE DAILY (including Sundays). STANDARD TIME.

From each terminal ... 7 and 9 a.m. ... 11 a.m., 1, 3 and 5 p.m.

For full information contact Head Office at Charlottetown, where, by making application at least 48 hours in advance, reservations may be secured for first and second sailings, each day, from each terminal.

For daily report listen to CFYJ each morning following first News Broadcast 6:30 S.T., 7:30 D.S. Time.

CATCH AN EARLY CROSSING AND AVOID DELAY.

NORTHUMBERLAND FERRIES LIMITED, CHARLOTTETOWN, P. E. I.

BLUE PETER STEAMSHIPS LIMITED

M. V. BLUE PRINCE

Next sailing of M/V Blue Prince from Charlottetown will be on July 22nd direct to St. John's, Newfoundland. For space reservations and rates, apply—

NEWFOUNDLAND SHIPPING SERVICE, P. O. BOX 65 — PHONE 1605

Coca-Cola

COSTS ONLY 7¢