

GIRLS OPPOSE VIEWING DOOR

DUBLIN (AP)—Girls at a Dublin underwear factory went on strike after employers put a transparent door on their powder room.

A plastic door was put on the room after employers said the 150 girl workers were spending too much time in there.

Smoking is banned on the factory floor and the girls were taking time off in the toilet for a quiet puff, the employers claimed.

The battle of the door began five weeks ago. Officials of the company, Eve of Dublin Ltd., got the wooden door taken down and replaced by a curtain in an effort to hurry up the girls.

The girls protested. So the employers took the curtain down and replaced it with a plastic door.

"But now people can see in," the girls said, and protested again.

Talks came to nothing and a strike notice was served on the firm. This expired Monday and the 150 girls stopped work.

Japanese And Canadians Talk Joint Ventures

TOKYO (AP)—Canadian and Japanese businessmen have agreed on the desirability of exploring joint ventures in the paper and pulp industry, lumbering, auto manufacturing and industrial use of coal.

A joint communique was issued at the end of a week-long session of the third Canadian-Japanese businessmen's conference.

The 26-man Canadian group was led by Maj.-Gen. R. H. Keefer, president of the Canadian Chamber of Commerce. The 40-man Japanese panel was headed by Kogoro Uemura, vice-president of the federation of economic organizations.

The parties agreed to hold their next conference in Canada in 1967.

Points mentioned in the statement were:

Canadian businessmen intend to send observers to a 1966 meeting in Sydney of Japanese and Australian businessmen.

The ratio of Japanese export-import trade with Canada has steadily improved over the last decade.

The Canadian delegation urged more diversified Japanese exports of products which Canada imports in large quantities and a decrease in voluntary quotas now being exercised by Japan on certain goods at Canada's request.

Howard Green Still Hopeful

VANCOUVER (CP)—Howard Green, former Conservative external affairs minister, said here he is not asking a recount of Nov. 8 election results in Vancouver Quadra riding, but he is not conceding defeat either.

Mr. Green declined further comment on his position. But he said Sunday "there are other ways to attack an election." The count last week of the service vote gave Liberal Grant Deachman a 346-vote margin over Mr. Green, who had represented the residential Vancouver area in the House of Commons for 23 years before being upset by Mr. Deachman in 1963.

Outposts Lost To Viet Cong

SAIGON (AP)—The South Vietnamese town of Tuy An was hit, but five government outposts were believed Tuesday night to have been overrun by Viet Cong guerrillas in a battle that shifted attention from the central highlands to the central coast.

Aided by a U.S. navy bombardment from the sea and U.S. Air Force raids, Tuy An stayed off attacks from a guerrilla regiment, estimated up to 2,000 men.

The quick diversion from the savage encounter in the Ia Drang Valley, 100 miles to the west, demonstrated how the Viet Cong and their North Vietnamese allies could strike and then fade into the countryside over huge areas.

Contracts Let For 3 Projects

OTTAWA (CP)—The department of public works has announced that contracts have been awarded for three construction projects in Newfoundland.

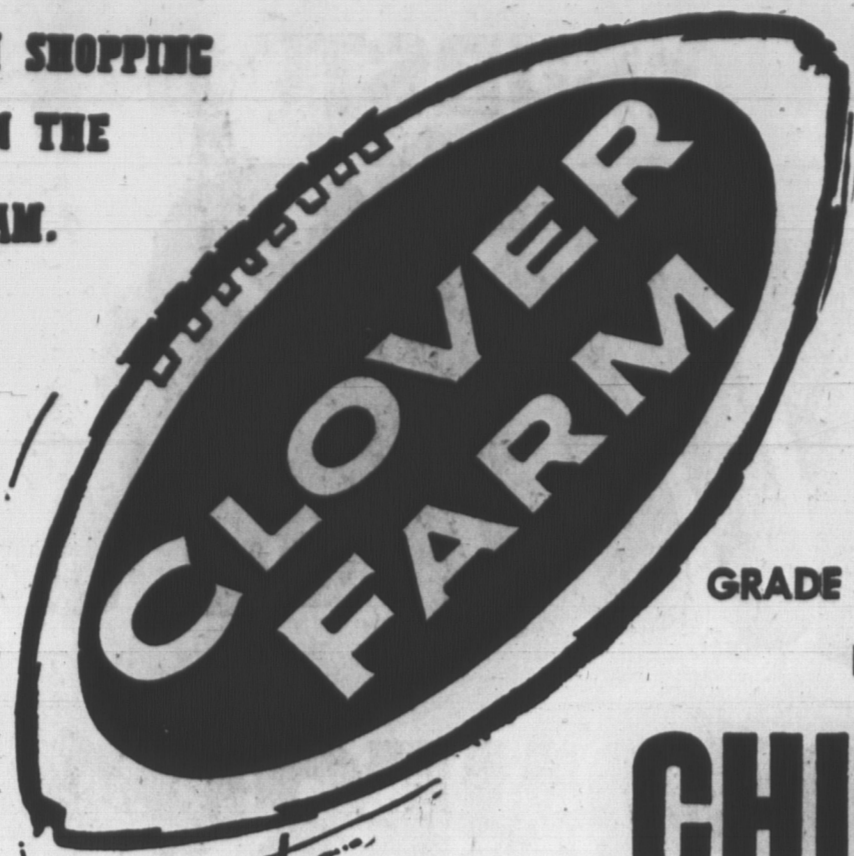
A \$75,552 contract has been awarded to Cameron Contracting Ltd. of Halifax for the reconstruction of a wharf at Rencontre East, N.F., on Belle Bay, which opens into Fortune Bay on the south coast of Newfoundland.

Glen Construction Company Ltd. of St. John's, Nfld., was awarded a \$77,654 contract for the reconstruction and extension of the breakwater at Parson's Harbour, Nfld.

Spracklin and Reid Limited of St. John's was awarded an \$86,658 contract for the reconstruction of the wharf at Port Elizabeth in the Placentia West district of Newfoundland.

CLOVER FARM SHOPPING PUTS YOU ON THE WINNING TEAM.

SPECIAL PRICES EFFECTIVE TIL CLOSING TIME SAT. NOV. 27th.



CLOVER FARM MARGARINE

4 1 LB. PKGS. **1.00**

P.E.I. MacINTOSH

APPLES

5 LB. BAG **35c**

NO. 1 CORELESS Carrots 2 Lb. Bag **19c**

CRISP Radishes Pkg. **15c**

RED, FIRM Grapes 2 Lbs. **39c**

PURITAN HAM & PICKLE, DEVILLED BEEF & HAM, HAM & TURKEY

Meat **4** **49c**

Spreads 3 OZ. TINS **49c**

BALLET Toilet Tissue **4** ROLLS **43c**

AYLMER SOUP

3 Tomato **2 Veg.** ALL FOR **55c**

HEINZ PICKLES

Bread 'N Butter 32 OZ. JAR **49c**

QUAKER ROLLED OATS **5** LB. BAG **69c**

KLEENEX MANS SIZE **2** PKGS. **63c**

MAGIC Baking Powder 1 LB. TIN **43c**

BROWN'S Assorted Cookies **3** CELLO PKGS. **89c**

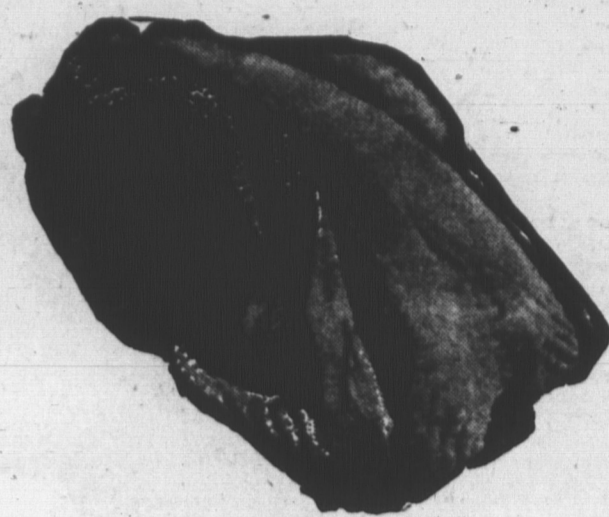
SCORE HIGH WITH SAVINGS

GRADE "A" OVEN READY BROILER

CHICKEN

39c LB.

(CUT UP AT NO EXTRA COST)



P. E. I. SKINLESS SHOULDER ROASTING PORK LB. **53c**

MAPLE LEAF POTTED MEAT 12 OZ. TUB **35c**

EXTRA LEAN GROUND BEEF 2 LBS. **99c**

THEY ARE NEW! LEAN BEEF SAUSAGE LB. **49c**

REAL LEAN PORK STEAK LB. **59c**

MAPLE LEAF BUTTER 1 LB. PKG. **59c**

RADIO CHOICE PEAS 5 20 OZ. TINS **1.00**

AYLMER TOMATO JUICE 3 48 OZ. TINS **1.00**

AYLMER WITH PORK—BOSTON BEANS 5 20 OZ. TINS **1.00**

AYLMER TOMATO CATSUP 5 11 OZ. BOTS. **1.00**

AYLMER CREAM CORN 5 20 OZ. TINS **1.00**

PETER PAN PEACHES 5 15 OZ. TINS **1.00**

SHIRRIFF'S FRUIT PUDDING 29c TIN

OLD LONDON TOWN MINCEMEAT 28 OZ. TIN **45c**

YORK PEANUT BUTTER 16 OZ. ICE BOX JAR **49c**

THRIFT LIQUID DETERGENT 24 OZ. BOT. **49c**

BAYERS ASPIRIN 100% **79c**

LAUNDRY SPECIAL FAB GIANT SIZE **75c**

SHREDDED WHEAT 2 18 OZ. PKGS. **75c**

CRUSH CANNED BEVERAGES 5 10 OZ. TINS **49c**

WAGSTAFFE BAKING FEATURES

CUT MIXED FRUIT	2 4 OZ. PKGS.	35c
CUT MIXED FRUIT	5 OZ. PKG.	31c
CUT MIXED PEEL	2 4 OZ. PKGS.	35c
CUT MIXED PEEL	5 OZ. PKG.	29c
CITRON	5 OZ. PKG.	33c
RED GLACED CHERRIES	4 OZ. PKG.	25c
RED GLACED CHERRIES	5 OZ. PKG.	43c
GREEN GLACED CHERRIES	4 OZ. PKG.	25c
DICED PINEAPPLE	4 OZ. PKG.	27c
PINEAPPLE TWINS	4 OZ. PKG.	27c
RED MARASCHINO CHERRIES	6 OZ. BOT.	29c

MOIRS HAPPINESS CHOCOLATES

1 LB. BOX **79c**

WAGSTAFFE CHERRY PIE FILLER 20 OZ. TIN **39c**

EASTPACK COD FILLETS 1 LB. PKG. **33c**

PERFECTION ICE CREAM 1/2 GAL. **99c**